



**Building our future, faster.**

# **Bolton Zone 7 Water Elevated Storage and Transmission Mains**

## **Schedule 'C' Class Environmental Assessment**

### **Public Information Centre (PIC) No. 1**

Humber River Centre – Gathering Space  
28 Ann Street, Bolton, ON L7E 1B9

Date: Tuesday, June 23, 2026

Time: 6 – 8 p.m.

# Why are we here?

## Public Information Centre (PIC) No. 1

Peel Region is undertaking the Bolton Zone 7 Water Elevated Storage and Transmission Mains Class EA to identify preferred locations for two new elevated water storage tanks and associated transmission mains needed to support future growth and maintain reliable water service in Bolton.

PIC No. 1 marks the beginning of the Municipal Class Environmental Assessment process. No preferred tank locations or transmission main routes have been selected at this stage. Feedback received through PIC No. 1 will help inform the development and evaluation of alternatives as the study progresses.

### PIC No. 1 Objectives

- Introduce the project and explain why the study is being undertaken.
- Outline the Municipal Class Environmental Assessment process and opportunities for participation.
- Present the study area, existing water system, and key study considerations.
- Describe next steps and opportunities for continued public participation.

### Key Dates

#### June 23, 2026

- PIC No. 1 Open House and launch of public comment period

#### June 23 – July 24, 2026

- Public review and comment period

#### Fall 2026

- Feedback summary posted online
- PIC No. 2

### How to Participate

- ✓ Review the information presented today
- ✓ Speak with members of the project team
- ✓ Ask questions and share your feedback
- ✓ Complete a comment sheet before leaving
- ✓ Submit comments online or by email until July 24, 2026

### Project Webpage

Scan the QR code or visit the project webpage:

<https://peelregion.ca/construction/environmental-assessments/bolton-zone-7-water-elevated-storage-transmission-mains>

PIC materials, project updates, and comment submission information will remain available online throughout the comment period.



*This is the first of three PICs planned for this study. Peel Region is committed to an open, transparent, and inclusive planning process.*

Peel Region is undertaking the **Bolton Zone 7 Water Elevated Storage and Transmission Mains Class Environmental Assessment** to plan new water infrastructure needed to support future growth and maintain reliable drinking water service in Bolton.

Building on previous planning studies and updated growth forecasts to 2051, this study will evaluate locations for two new elevated water storage tanks and associated transmission mains needed to support future communities.

## WHY NOW? Key Drivers

Several factors are driving the need for new water storage and transmission mains infrastructure in Bolton.

### 1. Growth and Future Communities

Bolton is expected to continue growing through 2051. New infrastructure is needed to support future homes, businesses, schools, and employment areas.



### 2. Water Pressure and Service Reliability

Some higher elevation areas in northern Bolton experience lower water pressure during peak demand periods. Future Pressure Zone 7 infrastructure would help improve pressure management and maintain reliable water service in these areas.



### 3. Future Storage Requirements

Future growth areas in Bolton will be serviced through new Pressure Zones 7B and 7E. New elevated water storage facilities are required to establish these pressure zones and support future development.



### 4. System Resiliency and Fire Protection

New elevated storage would improve system reliability, support fire protection, and provide greater flexibility during maintenance activities and emergency situations.



## Planning History and Previous Studies

**2013**  
June

**Bolton Residential Expansion Study (BRES)**

Recommended future water and wastewater servicing strategies to support growth in Bolton.

**2020**  
June

**Region of Peel Water and Wastewater Master Plan**

Updated long-term servicing strategies for Bolton and Peel Region.

**2020**  
November

**ROPA 30 Expansion Area Approved**

Expansion lands approved to accommodate future growth.

**Currently Underway**  
(Q2 2026)

**Bolton Water and Wastewater Improvements Class EA**

Confirmed the need for future servicing infrastructure to support growth to 2051.

**Currently Underway**  
(Q3 2026)

**Water & Wastewater Master Plan Update**

Updated long-term planning framework and growth forecasts to 2051.

**Ongoing**

**Bolton Zone 7 Water Elevated Storage and Transmission Mains Class EA**

Evaluating locations for two new elevated water storage tanks and associated transmission mains needed to support future growth.

# What is this study about?

## Study Purpose and Objectives

### Problem / Opportunity Statement

Previous planning studies completed by Peel Region identified the need for new water infrastructure within future Pressure Zones 7B and 7E to support long-term growth in the community of Bolton. While the overall servicing strategy has been established, the locations, configuration, and servicing approach for future elevated water storage facilities and associated transmission mains have not yet been determined.

This study provides the opportunity to evaluate alternative solutions and identify a preferred approach for water storage and transmission infrastructure that support future growth while balancing environmental, technical, financial, and community considerations.

## Study Objectives

### The study will:

- ✓ Identify preferred locations for two future elevated water storage facilities.
- ✓ Identify preferred transmission main routes connecting the facilities to the existing water system.
- ✓ Support future growth in the community of Bolton.
- ✓ Maintain reliable water pressure, storage capacity, and fire protection.
- ✓ Consider environmental, technical, cultural, social, and financial factors.
- ✓ Incorporate feedback from Indigenous Communities, stakeholders, agencies, and the public.



### How Will Decisions Be Made?

**No preferred elevated water storage facility locations or transmission main routes have been identified at this stage.**

Through the Municipal Class EA process, alternative locations and servicing approaches will be identified and evaluated using environmental, technical, social, cultural, financial, and operational considerations.

Feedback received from Indigenous Communities, agencies, stakeholders, and the public will help inform the evaluation process and the alternatives carried forward for further consideration.

### Who Benefits?

The proposed infrastructure is intended to support the future Pressure Zone 7 water system, including new residential and employment growth areas within Pressure Zones 7B and 7E.

The future system is also anticipated to serve portions of existing northern Bolton that are planned to transition from Pressure Zone 6 to Pressure Zone 7, helping to improve water pressure in higher elevation areas, enhance system resiliency, and optimize the operation of the broader Bolton water system.

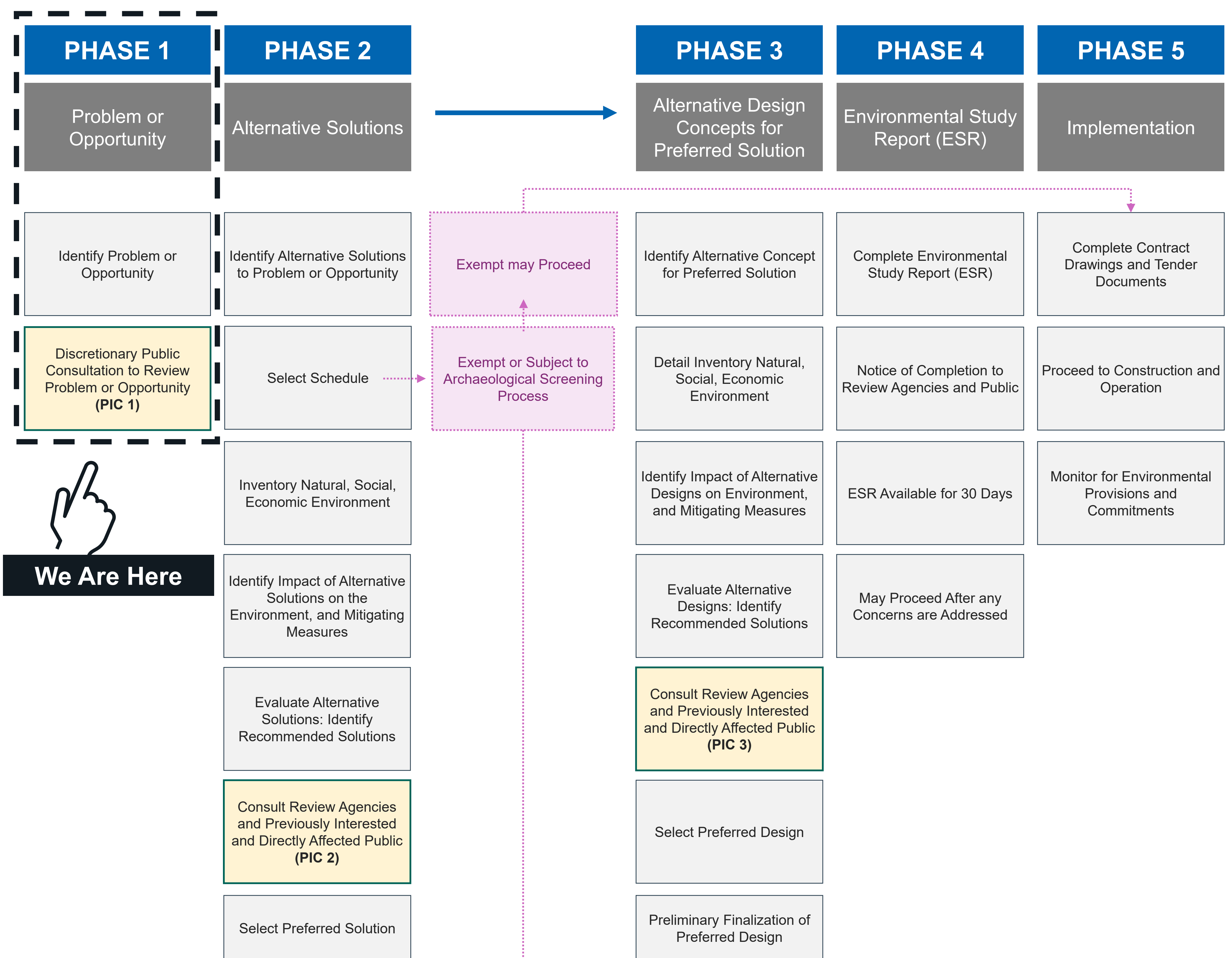
# How is the study being conducted?

## Municipal Class Environmental Assessment (MCEA) Process

This study is being completed as a **Schedule 'C' Municipal Class Environmental Assessment**, a provincially regulated planning process used to identify and evaluate infrastructure alternatives while considering environmental, technical, financial, and community factors.

Three Public Information Centres (PICs) will be held at key milestones throughout the study to share information and receive feedback from the public.

PIC No. 1 is focused on confirming the Problem or Opportunity Statement and introducing the study process.



### Archaeological Screening Process (ASP)

As part of the 2024 Municipal Class EA amendments, certain project components may be eligible for the Archaeological Screening Process (ASP). As shown in the process diagram above, eligible components may proceed through an alternative approval pathway rather than continuing through all phases of the Municipal Class EA process.

The study team will assess potential eligibility for the ASP during Phase 2 of the Class EA process.

# What's in the study area? Study Area and Existing System

## Study Area

The study area is located within the Town of Caledon and includes existing communities and future residential and employment growth areas in the community of Bolton.

The study area was established to capture the range of elevations, servicing needs, and future growth areas that may influence the evaluation of water servicing alternatives through the Class EA process.

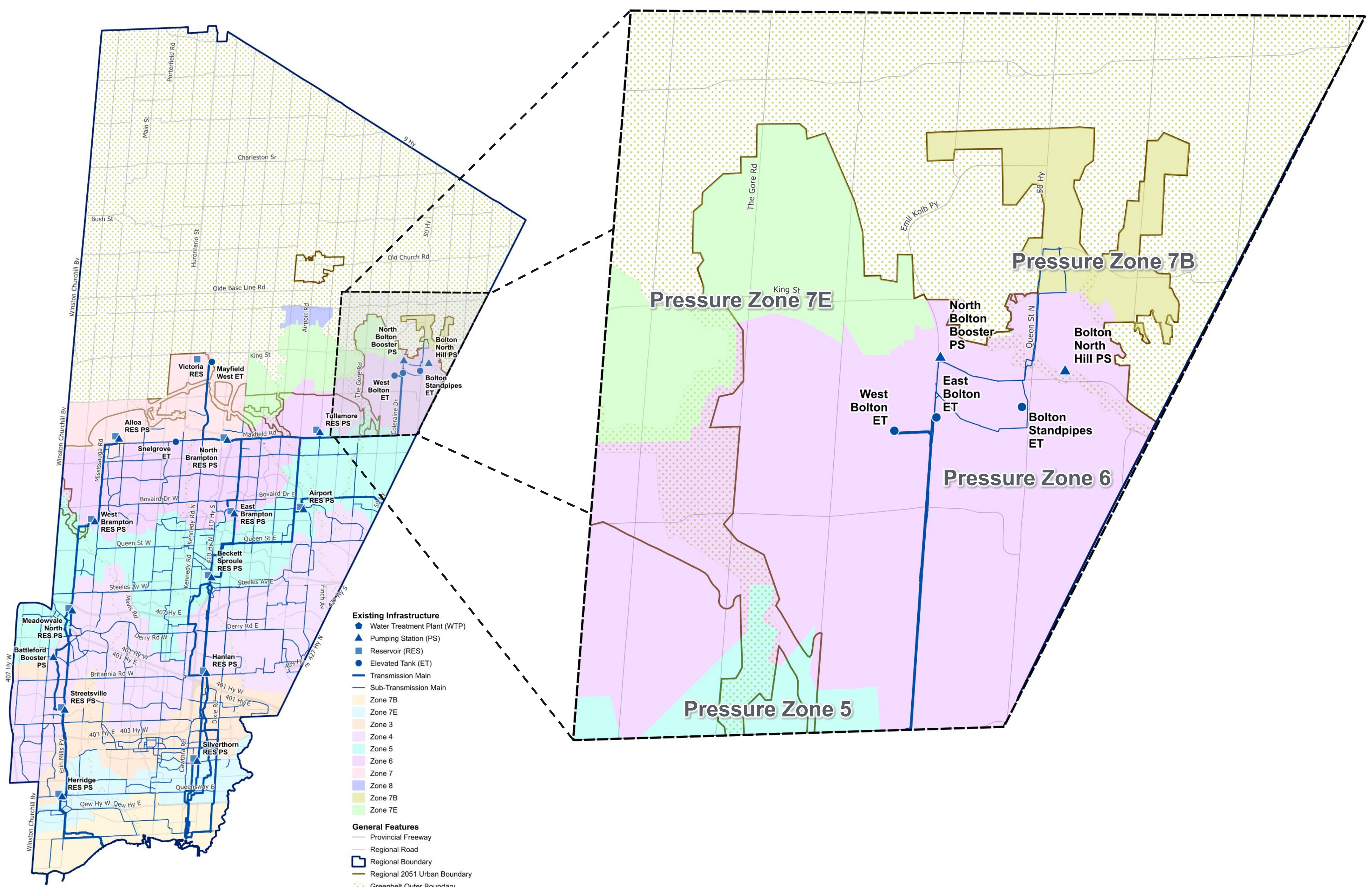
## Existing Water Servicing in Bolton

Drinking water in Bolton is supplied from Peel Region's lake-based water system through the Arthur P. Kennedy Water Treatment Plant and the Central and East Transmission Systems.

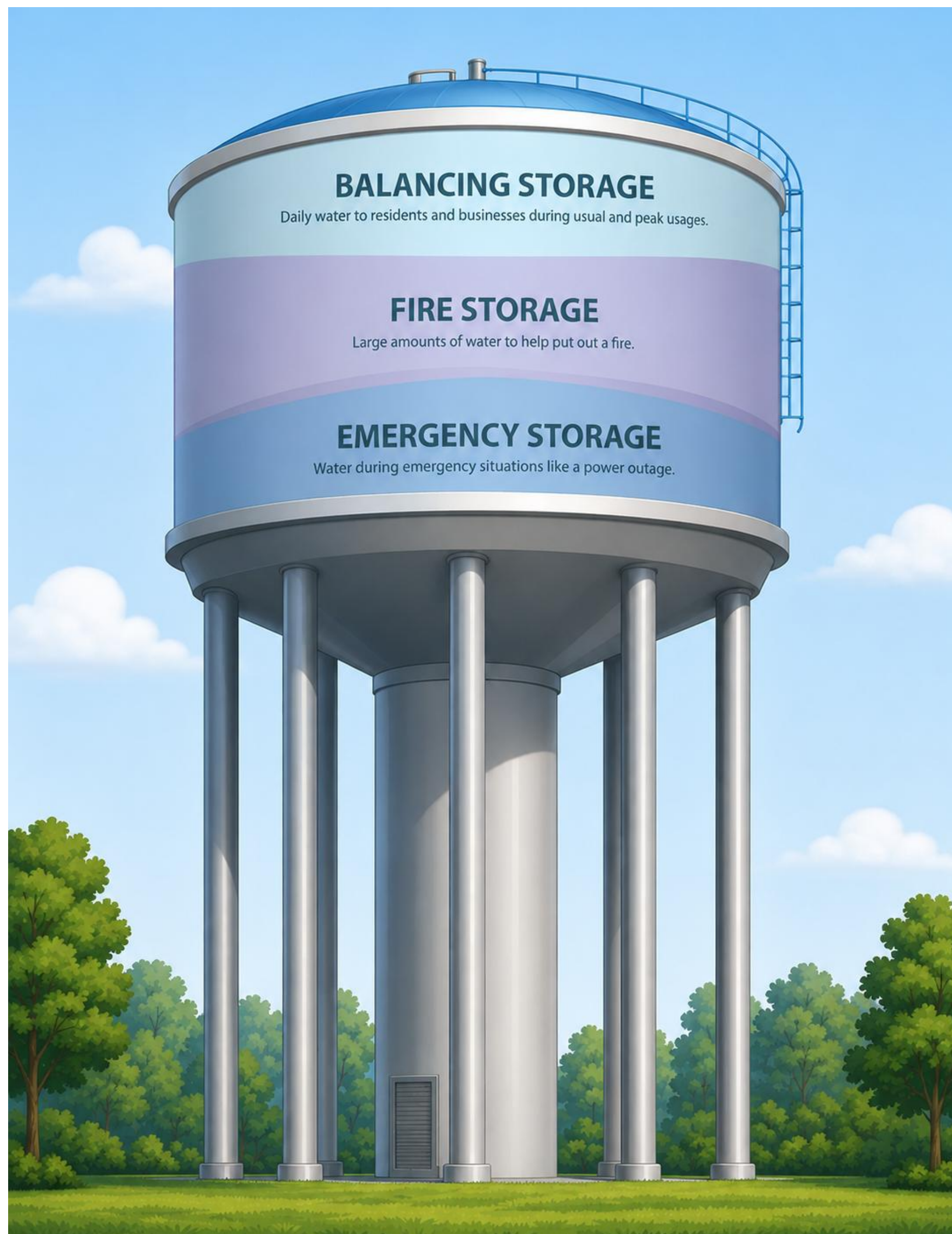
To provide reliable water pressure across areas of different elevations, the water distribution system is divided into pressure zones. Most of Bolton is currently serviced through Pressure Zone 6.

Future residential and employment growth areas north and west of the community of Bolton are located at higher elevations and will require a different pressure zone configuration than the existing system.

Future Pressure Zones 7B and 7E are planned to service these areas. New water infrastructure, including elevated water storage facilities and transmission mains, will be required to establish these future pressure zones.



# What are elevated tanks and transmission mains? Elevated Tanks and Watermains



## What is an Elevated Tank?

An elevated tank is a water storage facility built above ground on a tower. It stores treated drinking water and uses gravity to help maintain water pressure throughout the community.

### Elevated tanks provide:

- ✓ Reliable water pressure
- ✓ Water storage for daily and peak demands
- ✓ Firefighting supply
- ✓ Emergency backup storage

## Why Are Two Elevated Tanks Being Considered?

Future growth in Bolton is planned to be serviced through two new pressure zones, known as Pressure Zones 7B and 7E. Each pressure zone requires its own water storage and pressure management infrastructure.

The Class EA will evaluate the size, location, and servicing requirements for both facilities.

## Why Elevated Storage?

Elevated storage uses gravity to maintain water pressure throughout the system and can provide both water storage and pressure support from a single facility.

## What Elevated Tanks Do Not Do

- Elevated tanks do not change the source of drinking water.
- Elevated tanks do not treat water or affect water quality.
- Drinking water will continue to be supplied through Peel Region's existing water distribution system.

# How Water Moves Through the System



# What factors go into the evaluation? Key Study Considerations

As the study progresses, alternative locations and servicing approaches will be evaluated using a range of technical, environmental, social, cultural, and financial considerations.

The considerations below represent some of the key factors expected to inform this study and the development of the evaluation framework.

## Technical and Servicing

- Future growth needs
- Pressure zone requirements
- Water storage needs
- Existing infrastructure
- Ground elevation requirements
- Elevated storage height



## Environmental

- Protected policy areas (e.g., Greenbelt, Oak Ridges Moraine)
- Natural heritage features
- Water resources
- Source water protection
- Geology and hydrogeology
- Environmental constraints



## Community and Cultural

- Nearby residents and businesses
- Archaeological resources
- Cultural heritage resources



## Indigenous Community Interests

- Potential impacts to traditional land and water use
- Ongoing relationship-building and collaboration
- Identification and mitigation of potential project impacts
- Protection of archaeological and heritage resources of significance to Indigenous rightsholders



## Financial

- Capital costs
- Operations and maintenance
- Lifecycle considerations



## Land Use and Property

- Property availability
- Access requirements
- Compatibility with existing and future surrounding land uses
- Adjacent properties



*The formal evaluation framework will be developed and refined during the next phase of the study and presented at PIC No. 2.*

# What studies are being conducted? Background Studies to Support Evaluation Process



## Baseline Natural Features Assessment - Desktop

**Description of Study:** Inventory of Species at Risk, significant natural features, wildlife habitats and governing environmental policies.

**Study Purpose:** Determine the potential impacts to this project and any mitigation measures required.



## Cultural Heritage - Desktop

**Description of Study:** Identification of properties within the study area with cultural heritage classification.

**Study Purpose:** Determine the constraints and recommendations for further investigations or studies.



## Archaeological Assessment Stage 1 - Desktop

**Description of Study:** Identification of properties within the study area with archaeological potential.

**Study Purpose:** Determine the constraints and recommendations for further investigations or studies.



## Socio-Economic Screening - Desktop

**Description of Study:** Identification of the existing and future land uses within the study.

**Study Purpose:** Develop a solution that corresponds with future land uses.



## Geotechnical and Hydrogeological - Desktop

**Description of Study:** Establish the existing groundwater, soil, and rock conditions, hydrogeological conditions and Source Water Protection policy areas.

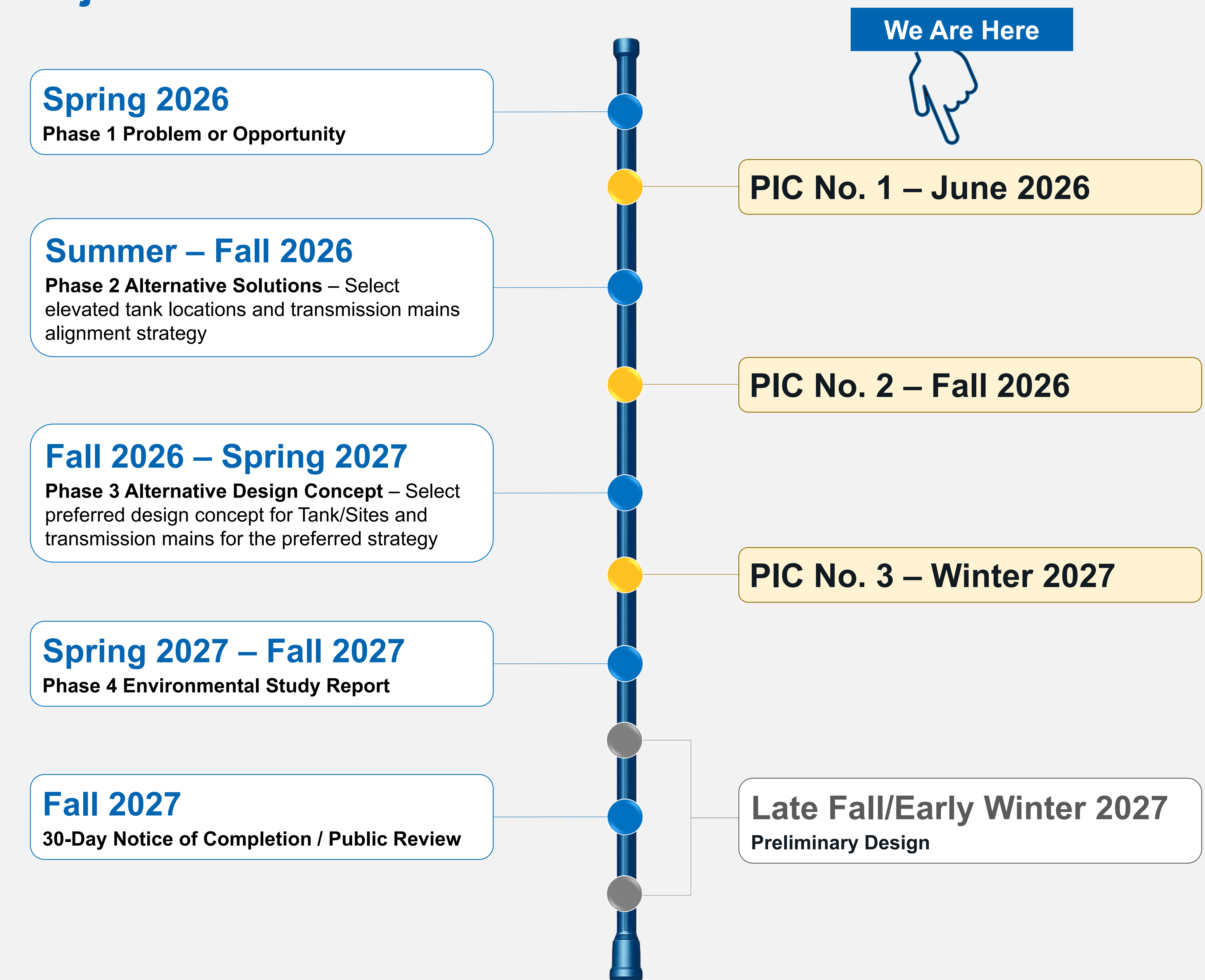
**Study Purpose:** Identify necessary mitigation measures on potential impacts to groundwater and surface water resources and recommendations for future investigations.

*\*Further studies will be completed as part of Phase 2 and Phase 3 of the EA process..*

## Upcoming Milestones

- Review and incorporate feedback from PIC No. 1.
- Investigate alternative water storage locations and transmission main alignments.
- Complete further background studies to support evaluation process.
- Engagement with Indigenous Rights and Interest Holders.
- Consultation with public, review agencies, and other interested stakeholders.
- Prepare for PIC No. 2.

## Project Timeline



*The schedule shown represents the current anticipated timeline and may be adjusted as new information is gathered through technical studies, consultation activities, and the Municipal Class Environmental Assessment process.*

# Thank you! How to Stay Involved

Do you have any questions,  
comments, or want to stay  
up to date?

**Please contact us anytime!**



## Jared Acosta

Project Manager, Environmental Assessments  
and Studies

Peel Region | Public Works

10 Peel Centre Drive, Brampton, ON L6T 4B9

+1 (437) 232-9671

[Jared.Acosta@peelregion.ca](mailto:Jared.Acosta@peelregion.ca)

Additional project information can be found on the project website,  
which can be accessed by scanning the QR code with your  
smartphone.

<https://peelregion.ca/construction/environmental-assessments/bolton-zone-7-water-elevated-storage-transmission-mains>



## Looking Ahead!

The preferred locations and servicing strategy identified through this Class Environmental Assessment will support Peel Region's long-term water servicing needs and planned growth to the 2051 planning horizon.



If you need any accommodations to provide comments and/or feedback for this study, please contact the Project Manager.

*Please note that information related to this study will be collected in accordance with the Municipal Freedom of Information and Protection of Privacy Act (MFIPPA). All comments received will become part of the public record and may be included in the study documentation prepared for public review.*