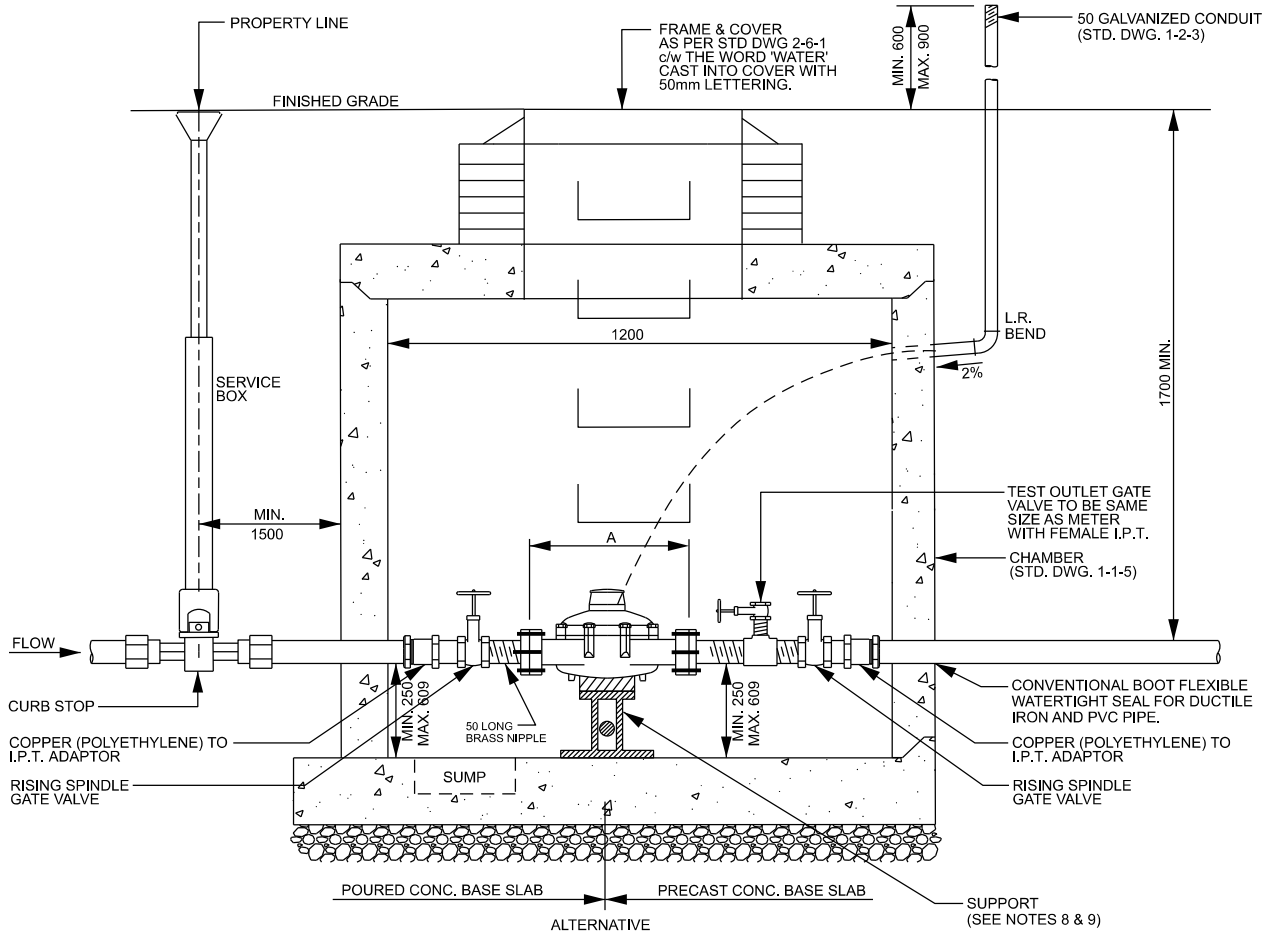


METER SIZE	A
38 mm	330 mm
50 mm	435 mm



NOTES

- 50mm GALVANIZED CONDUIT SHALL BE INSTALLED FROM INSIDE CHAMBER WALL TO SUITABLE LOCATION, LOCATED A MINIMUM OF 2000mm FROM PARKING LOTS, DRIVEWAYS, SIDEWALKS OR OTHER TRAVELLED SURFACES AS PER STD DWG 1-2-3.
- IF OPTIONAL BYPASS IS NOT INSTALLED, THEN SHUTDOWN OF SERVICE WILL OCCUR FOR MAINTENANCE AND REPAIR DURING NORMAL BUSINESS HOURS.
- EXTRUDED COPPER (SOLDERED) OR GALVANIZED FITTING SHALL NOT BE USED, ALL FITTINGS TO BE BRASS.
- TEST VALVE SHALL BE LOCATED BETWEEN OUTLET SIDE OF THE METER AND THE OUTLET SIDE ISOLATION VALVE.
- ALL BARE METAL SERVICES (FITTINGS, PIPING, APPURTENANCES, ETC) TO BE WRAPPED IN AN ANTICORROSION PETROLEUM TAPE INCLUDING PASTE MASTIC AND TAPE.
- BACKFLOW PREVENTER SHALL BE INSTALLED AFTER THE METER AS PER CSA B64-10-23 AS AMENDED.
- NO CONNECTION SHALL BE MADE BETWEEN THE BACKFLOW PREVENTER AND THE METER ASSEMBLY.
- ALL PIPING, FITTINGS AND METER SHALL BE SUPPORTED INDEPENDENTLY OF EACH OTHER.
- PIPING SHALL BE BRACED TO MAINTAIN ALIGNMENT OF PIPE AND FITTINGS, PREVENT SWAYING, AND CONTROL THRUST. ALL SUPPORT MATERIALS SHALL BE COMPATIBLE WITH PIPE MATERIAL AND, CORROSION RESISTANT WHEN INSTALLED IN WET ENVIRONMENT.
- ALL DIMENSIONS ARE IN MILLIMETERS UNLESS OTHERWISE SPECIFIED.



PUBLIC WORKS STANDARD DRAWING

REV. DATE: JUNE 2026

APPROVED BY

A.L.

STD. DWG. NUMBER

1-4-8

DRAWN BY

PEEL CAD TEAM

SCALE

N.T.S.

**38mm AND 50mm METER CHAMBER INSTALLATION
ON COPPER OR POLYETHYLENE WATERMAIN**