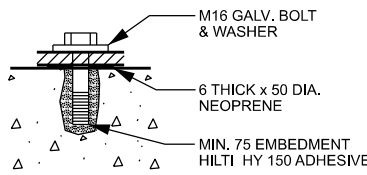


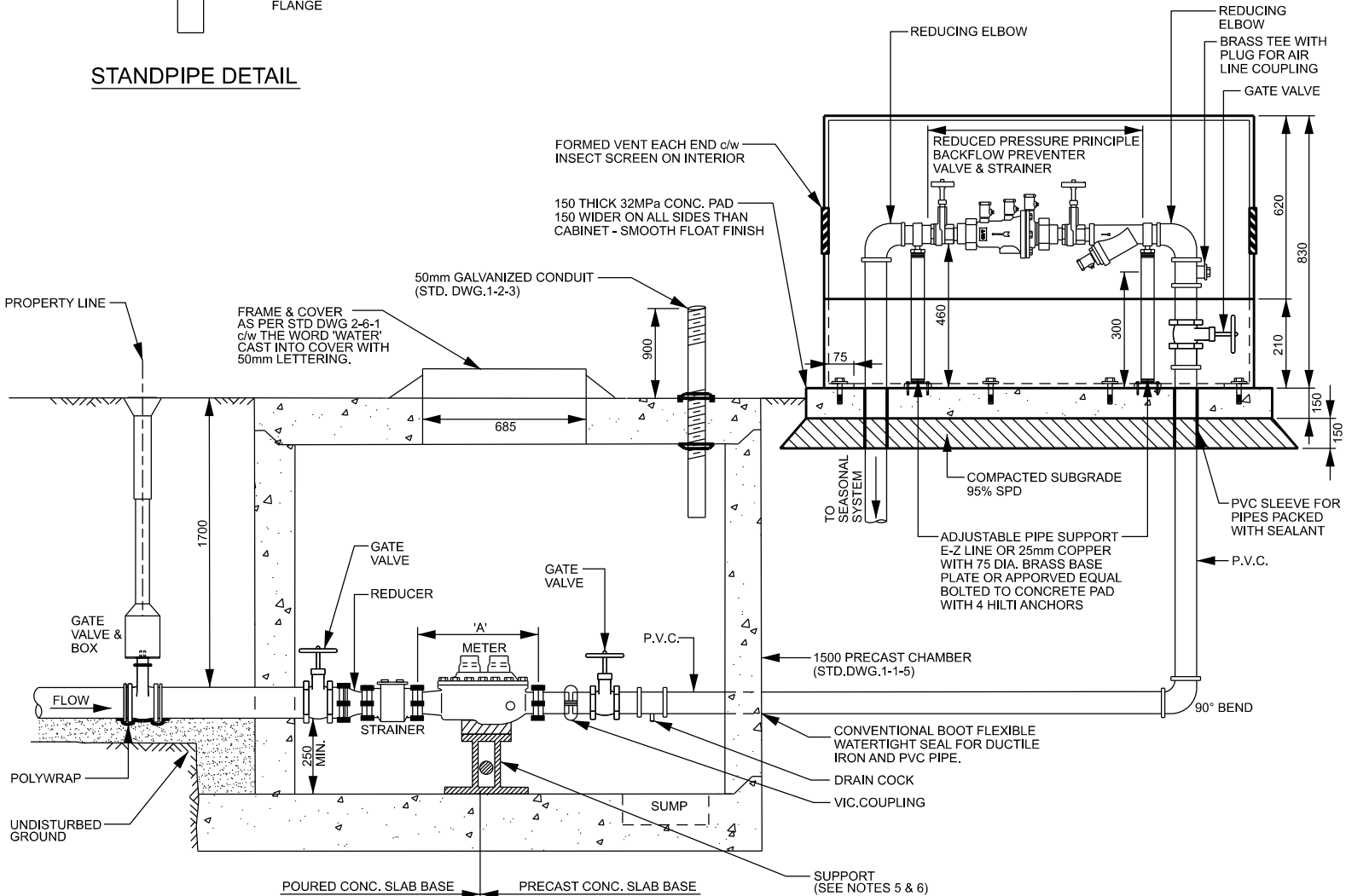
STANDPIPE DETAIL



ANCHOR DETAIL

TABLE

PIPE SIZE IN	METER SIZE	PIPE SIZE OUT	'A'
38mm	25mm	25mm	273mm
50mm	38mm	38mm	330mm
75mm	50mm	50mm	432mm
100mm	75mm	75mm	432mm
—	75mm STRAINER	—	152mm



NOTES

1. IF METER SIZE IS LESS THAN 75mm, THEN A TEST OUTLET GATE VALVE SHALL BE INSTALLED (STD.1-4-6) ON OUTLET SIDE OF METER.
2. ABOVE GRADE UTILITY BOX TO BE CERTIFIED AS PER ASSE #1060 STANDARD.
3. SEASONAL SYSTEM TO BE WINTERIZED TO ELIMINATE PROBABLE FREEZING AND BURSTING OF PIPES.
4. ALL BARE METAL SERVICES (FITTINGS, PIPING, APPURTENANCES, ETC) TO BE WRAPPED IN AN ANTICORROSION PETROLEUM TAPE INCLUDING PASTE MASTIC AND TAPE.
5. ALL PIPING, FITTINGS AND METER SHALL BE SUPPORTED INDEPENDENTLY OF EACH OTHER.
6. PIPING SHALL BE BRACED TO MAINTAIN ALIGNMENT OF PIPE AND FITTINGS, PREVENT SWAYING, AND CONTROL THRUST. ALL SUPPORT MATERIALS SHALL BE COMPATIBLE WITH PIPE MATERIAL AND, CORROSION RESISTANT WHEN INSTALLED IN WET ENVIRONMENT.
7. VENT ON REDUCED PRESSURE PRINCIPLE BACKFLOW PREVENTER ASSEMBLY SHALL BE MIN. 300mm ABOVE WEEP HOLE AND FINISHED GRADE.
8. ALL DIMENSIONS ARE IN MILLIMETERS UNLESS OTHERWISE SPECIFIED.



**PUBLIC WORKS
STANDARD DRAWING**

REV. DATE: MAY 2026

APPROVED BY

A.M.

STD. DWG. NUMBER

1-4-11

DRAWN BY

PEEL CAD TEAM

SCALE

N.T.S.

**METER CHAMBER FOR SEASONAL SYSTEM
IN ABOVE GRADE UTILITY BOX**