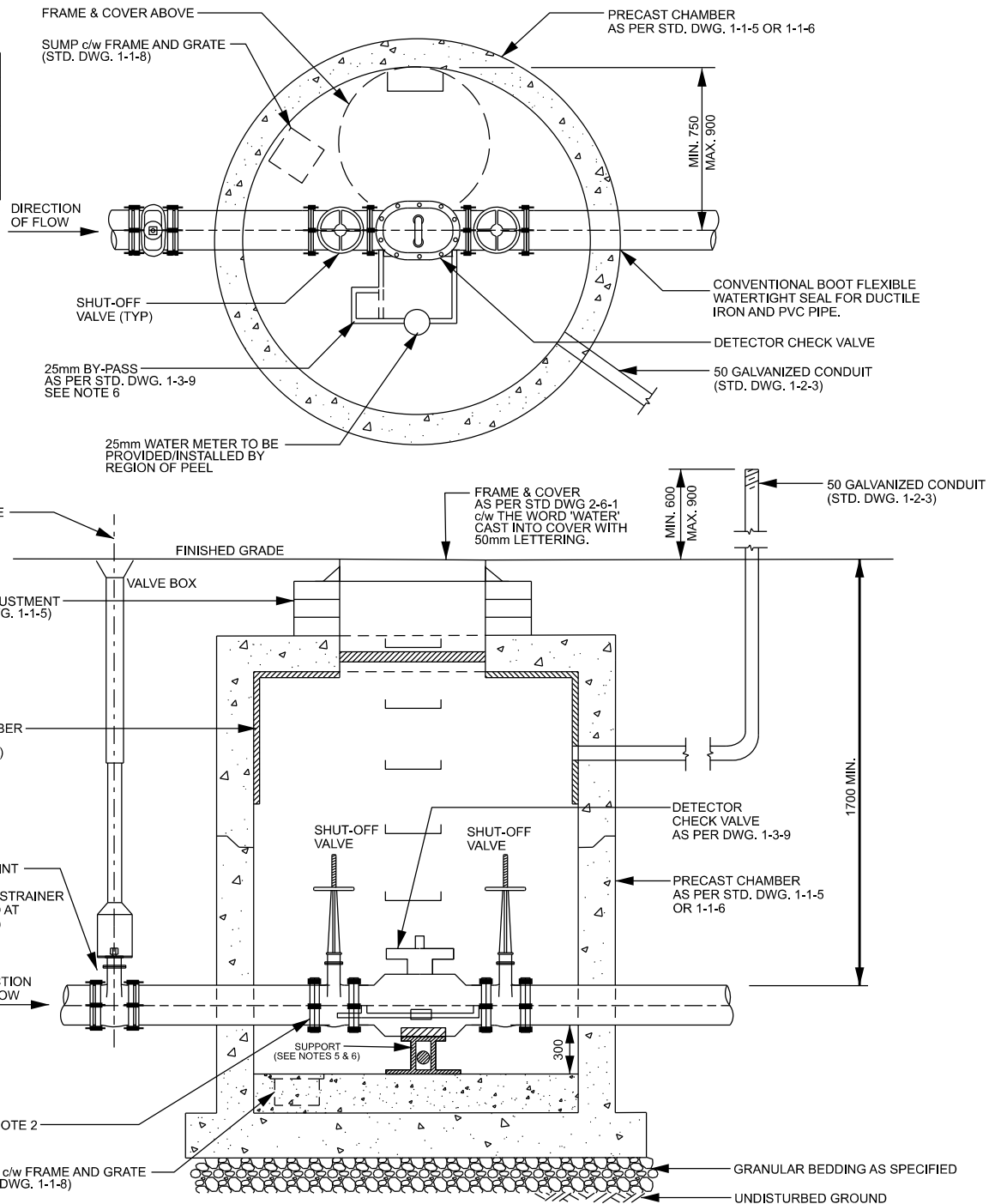


| DETECTOR CHECK VALVE AND BY-PASS | |
|----------------------------------|--------------------|
| CHECK VALVE SIZE | BY-PASS METER SIZE |
| 150 | 25mm |
| 200 | 25mm |
| 300 | 25mm |



NOTES

1. THE SIZE OF THE CHAMBER TO BE DETERMINED BY THE CIVIL ENGINEER BASED ON THE SPECIFIED DETECTOR CHECK VALVE ASSEMBLY.
2. VALVES ON WATER SERVICES MAY BE REQUIRED TO BE SUPERVISED AS PER AUTHORITY HAVING JURISDICTION.
3. ALL TEST PORTS ON THE DEVICE SHALL BE PLUGGED WITH MECHANICALLY RESTRAINED PLUGS RATED FOR THE MAXIMUM SYSTEM WORKING PRESSURE.
4. THE APPROPRIATE BACKFLOW PREVENTION DEVICE MUST BE SPECIFIED BY THE CIVIL ENGINEER AND ORDERED FROM MANUFACTURER WITH SHUT-OFF VALVES BEFORE AND AFTER THE DEVICE IN ACCORDANCE WITH THE CSA B64 10-23 REGULATIONS AS AMENDED.
5. ALL PIPING, FITTINGS AND BACK FLOW PREVENTER SHALL BE SUPPORTED INDEPENDENTLY OF EACH OTHER.
6. PIPING SHALL BE BRACED TO MAINTAIN ALIGNMENT OF PIPE AND FITTINGS, PREVENT SWAYING, AND CONTROL THRUST. ALL SUPPORT MATERIALS SHALL BE COMPATIBLE WITH PIPE MATERIAL, AND CORROSION RESISTANT WHEN INSTALLED IN WET ENVIRONMENT.
7. INSTALL 50mm GALVANIZED CONDUIT FROM INSIDE CHAMBER WALL TO SUITABLE LOCATION LOCATED A MINIMUM OF 2000mm FROM PARKING LOTS, DRIVEWAYS, SIDEWALKS OR OTHER TRAVELED SURFACES AS PER STD DWG 1-2-3.
8. GATE VALVE, FITTINGS AND PIPE SHALL BE RESTRAINED AS PER REGION OF PEEL REQUIREMENTS.
9. ALL BARE METAL SERVICES (FITTINGS, PIPING, APPURTENANCES, etc) TO BE WRAPPED IN AN ANTI CORROSION PETROLEUM TAPE INCLUDING PASTE MASTIC AND TAPE.
10. LOCATE CHAMBER ADJACENT TO PROPERTY LINE OR EASEMENT BOUNDARY ON PRIVATE SIDE. NO ELEMENT OF CHAMBER OR APPURTENANCES SHALL BE LOCATED INTO PROPERTY LINE.
11. TRACER WIRE AS PER STD DWG 1-7-10.
12. ALL DIMENSIONS ARE IN MILLIMETERS UNLESS OTHERWISE SPECIFIED.



**PUBLIC WORKS
STANDARD DRAWING**

REV. DATE: MAY 2026

APPROVED BY

A.M.

STD. DWG. NUMBER

1-3-1

DRAWN BY

PEEL CAD TEAM

SCALE

N.T.S.

**DETECTOR CHECK VALVE ASSEMBLY
IN CHAMBER FOR FIRE SERVICES**