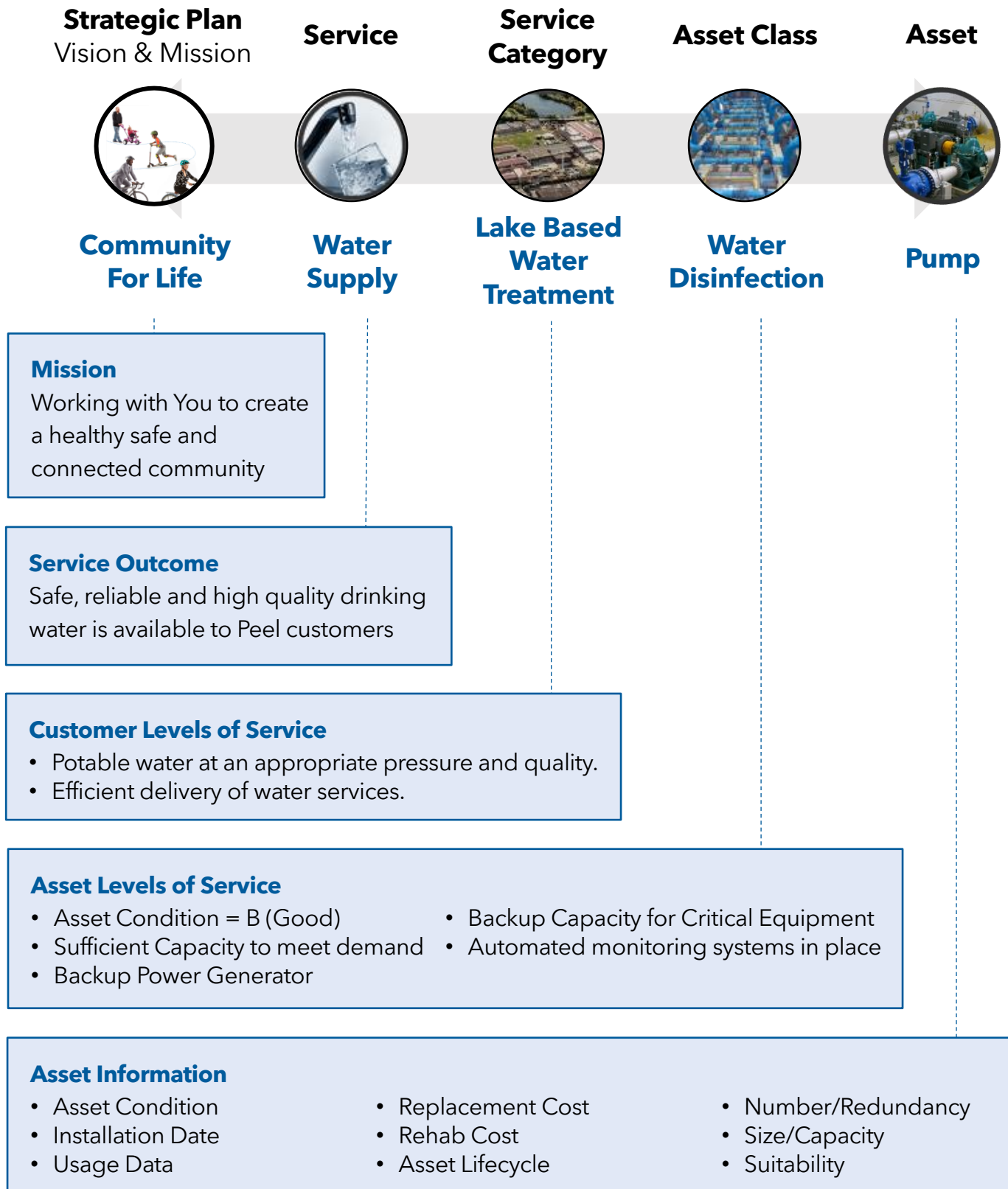


2025 Enterprise Asset Management Plan

Asset Management Line of Sight



This image shows Peel's Asset Management Line of Sight. Line of Sight refers to the connection between an organization's strategic goals and the daily activities involved in managing assets. Line of sight in asset management, achieves two important things:

1. People doing the physical work on the infrastructure can see how the work they do supports the strategic goals of the Peel Region.
2. People setting the strategic goals of the Peel Region can see how their decisions change how we manage our infrastructure. Enterprise Asset Management at Peel enables this line of sight, connecting the Service Outcomes down to the assets that support them.