



# Williams Parkway Watermain

Public Information Centre #1

June 19, 2025

[peelregion.ca/construction/project-14-1256](https://peelregion.ca/construction/project-14-1256)





# What is Flow | Central Brampton?

**Flow**  
Building our  
future, faster.

Peel is growing, and we want to ensure our community remains a great place to **live, work** and **play**. Peel's Flow | Central Brampton Program will provide essential water and wastewater infrastructure for our communities, now and in the future.



- Flow | Central Brampton is part of a broader series of capital investments to deliver the infrastructure needed to build 1.5 million new homes in Ontario over the next decade—including 113,000 in Brampton.



- In support of the Province's plan to meet local housing needs, the City of Brampton has advanced its Housing Brampton strategy and reinforced its commitment through the Municipal Housing Pledge.



- In response, Peel Council has projected over \$1 billion in capital investments to support these services, reinforcing our commitment to building the essential water and wastewater infrastructure needed for our future communities.

Flow | Central Brampton will meet these demands by combining more than 30 water and wastewater projects into one large-scale construction program across Brampton, driving efficiency and supporting sustainable community growth.





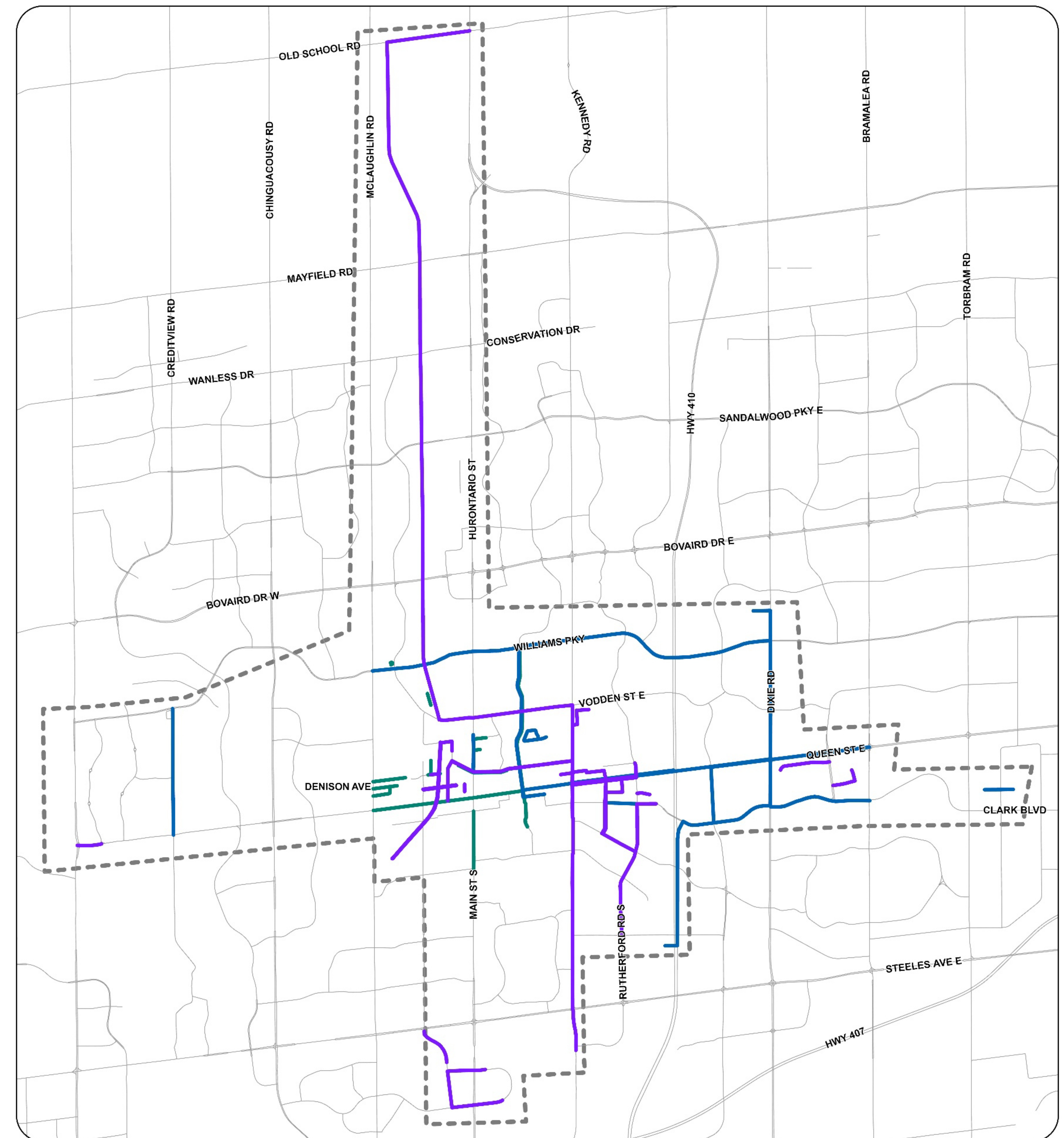
# Flow

Building our  
future, faster.

## Program Area

Over the coming years, Flow | Central Brampton will deliver over 30 water and wastewater projects, covering an approximate geographical area from Ray Lawson Boulevard in the south, Old School Road in the north, Mississauga Road in the west and Torbram Road in the east, as shown in this map.

Williams Parkway Watermain is a key Flow | Central Brampton project.



### General Legend

- Program Boundary
- Roads

**Data Sources:**  
Government of Ontario, Region  
of Peel  
PN: 60736820  
May, 20, 2025

FLOW | Central Brampton

### Proposed Infrastructure

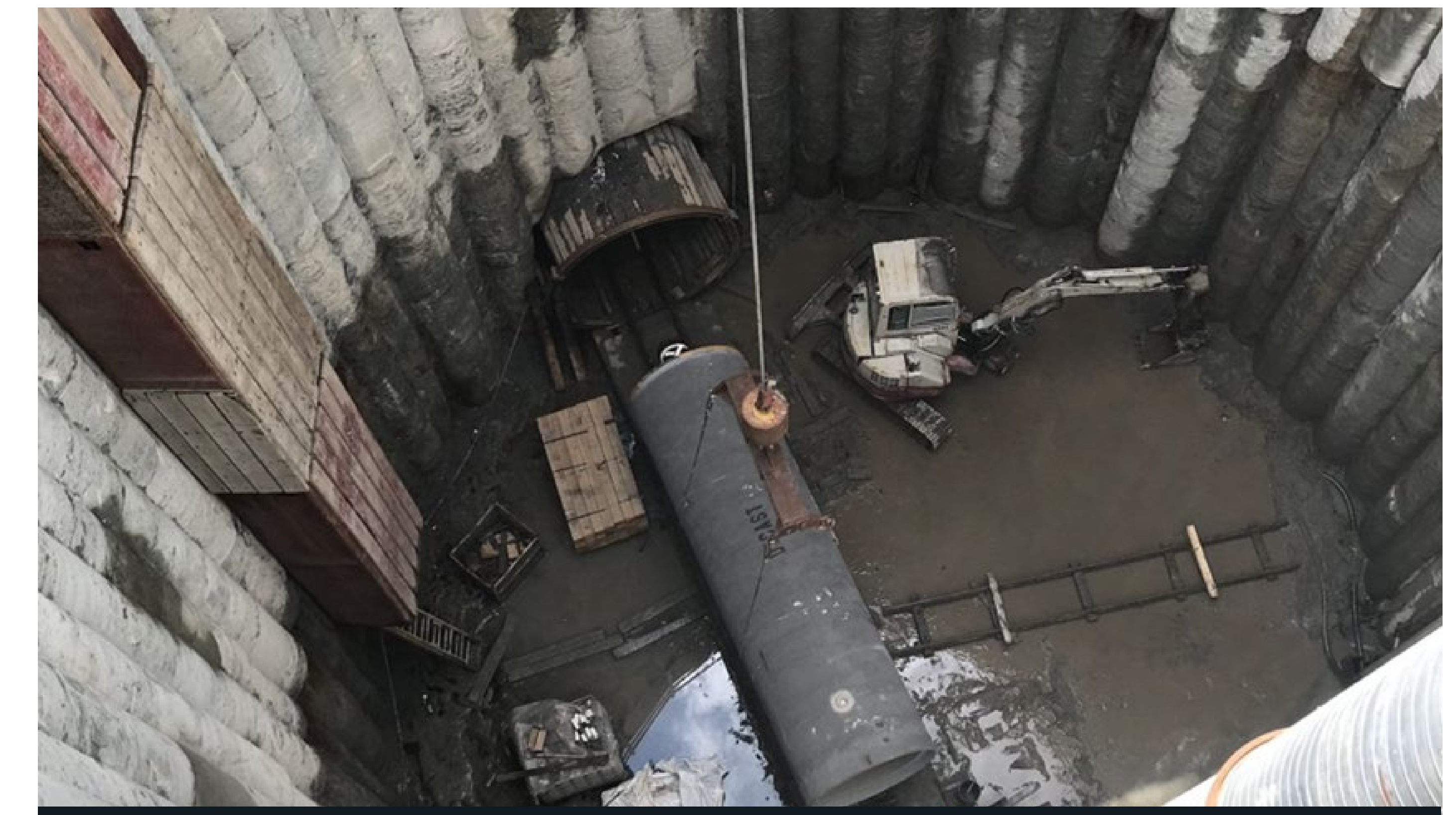
- Water and Wastewater
- Water
- Wastewater



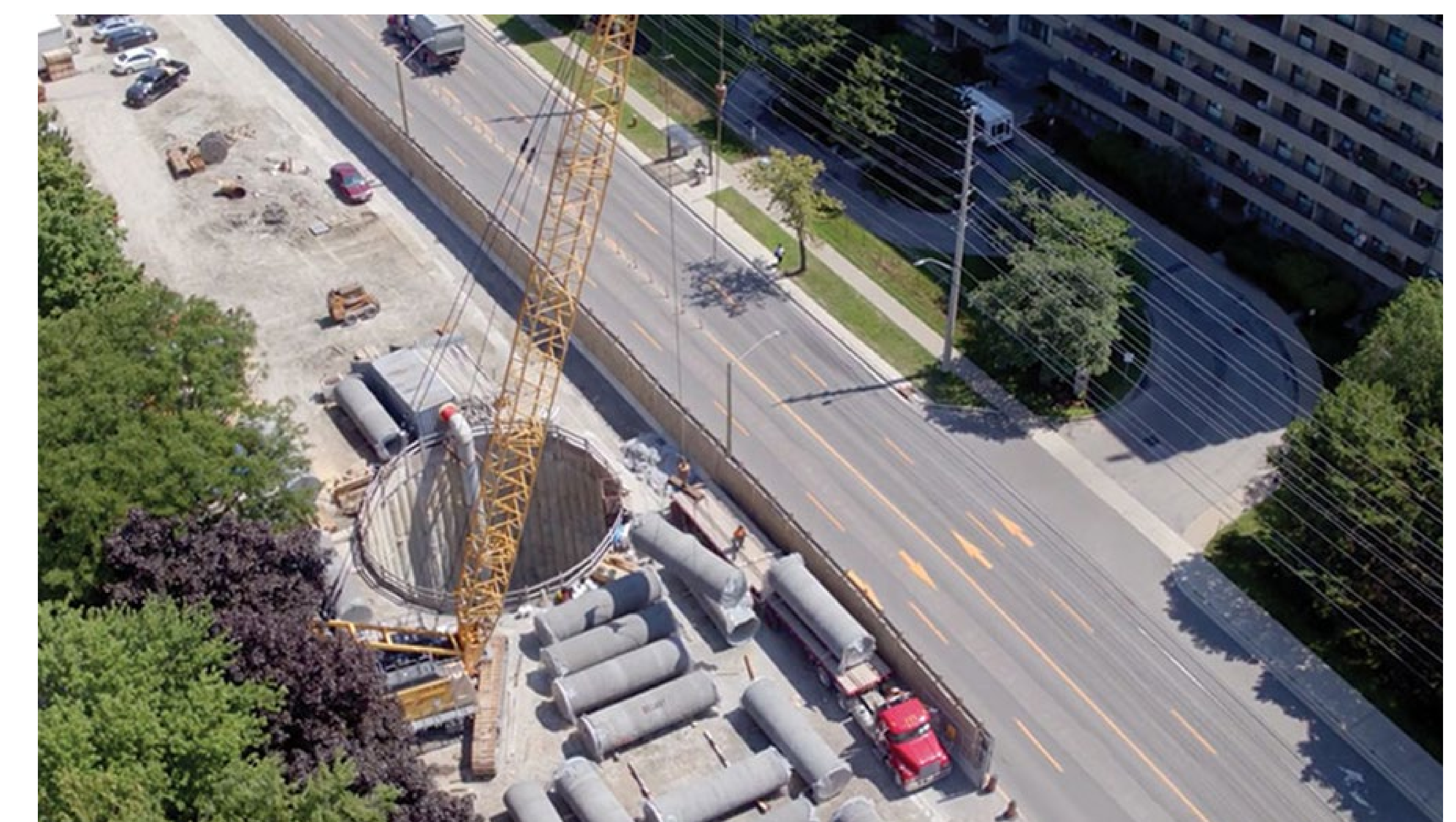
# Williams Parkway Watermain

## What's Happening?

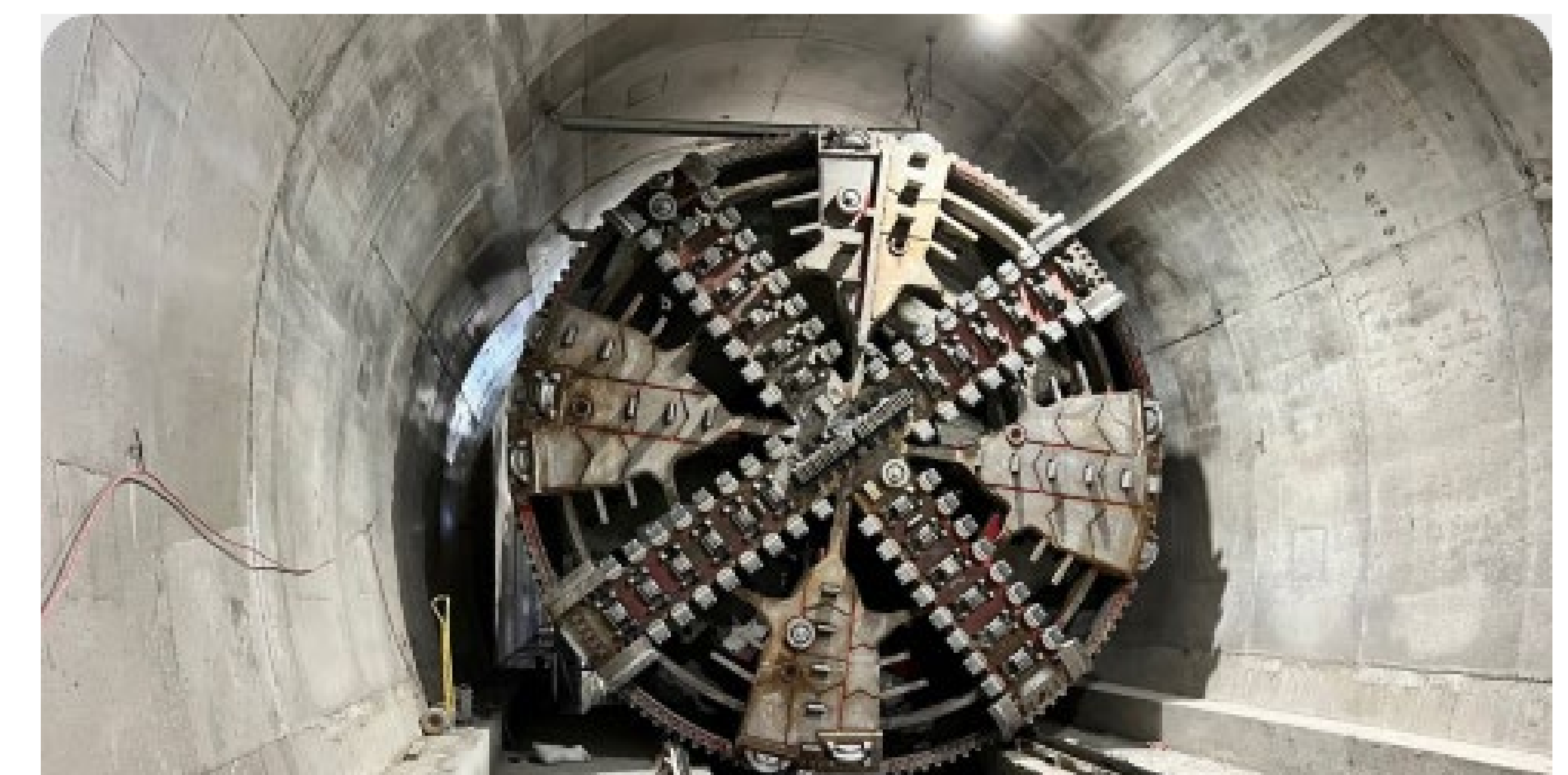
- Installing about 10.5 km of new large-diameter watermain (1200 mm) under Williams Parkway from Dixie Road to West Brampton Pumping Station on Mississauga Road.
- The Project is divided into two phases:
  - **Phase 1:** From McLaughlin Road in the west to Dixie Road in the east (the focus of PIC #1)
  - **Phase 2:** Between McLaughlin Road and Mississauga Road; construction expected in the fall of 2026
- Installation will be done by tunnelling—six shafts (deep holes) will be dug along the surface, and a tunnel boring machine will connect the shafts underground.
- Concrete walls will protect and surround each shaft to lower noise levels and contain most dust.
- Landscaping and hardscaping will be restored after the work is complete to existing or better conditions.



Placing pipe down a shaft



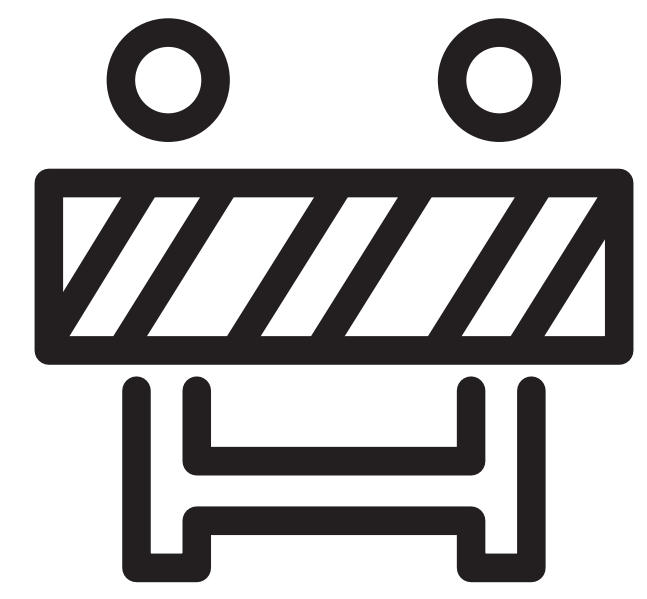
Bird's eye view of shaft



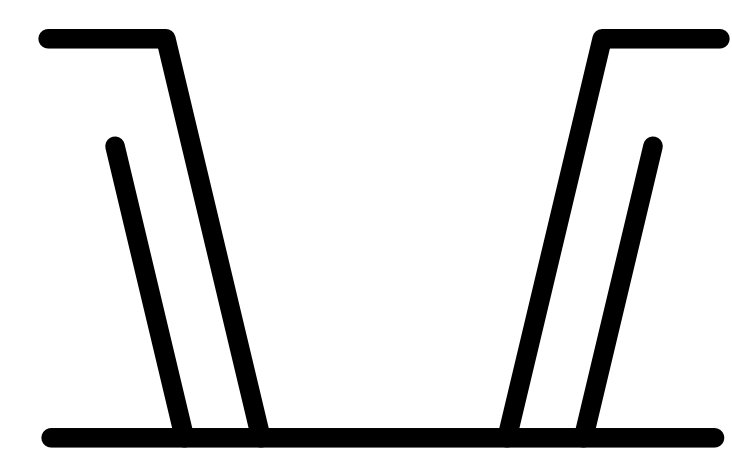
Tunnel boring machine



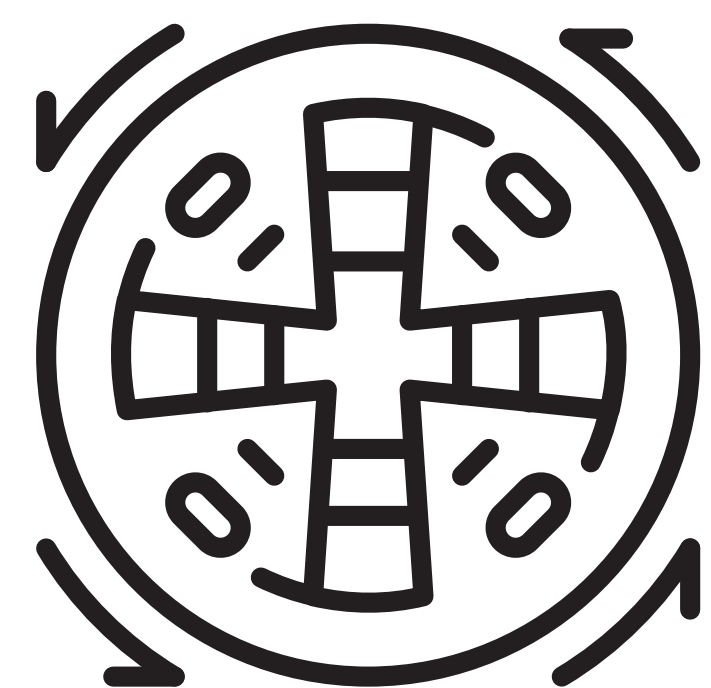
# What is a...



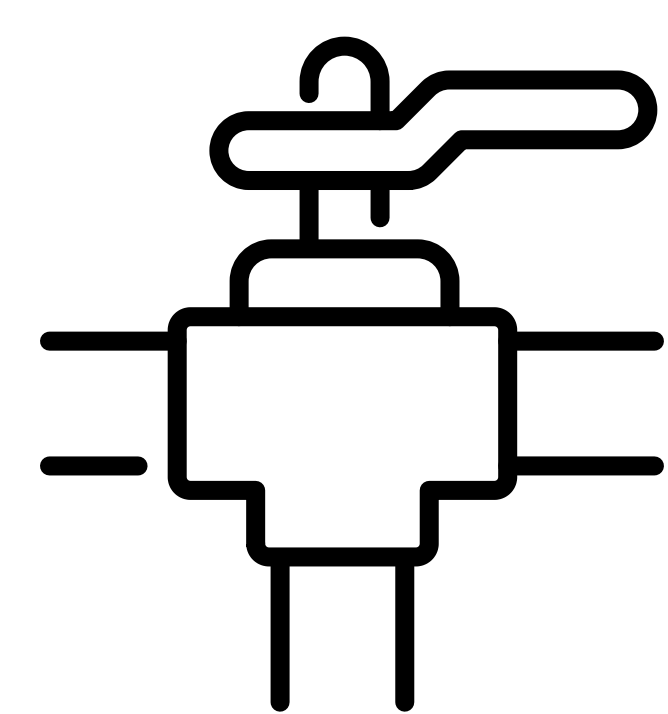
**Compound:** The fenced area where construction will take place. On this project, the compound will be surrounded by high concrete walls.



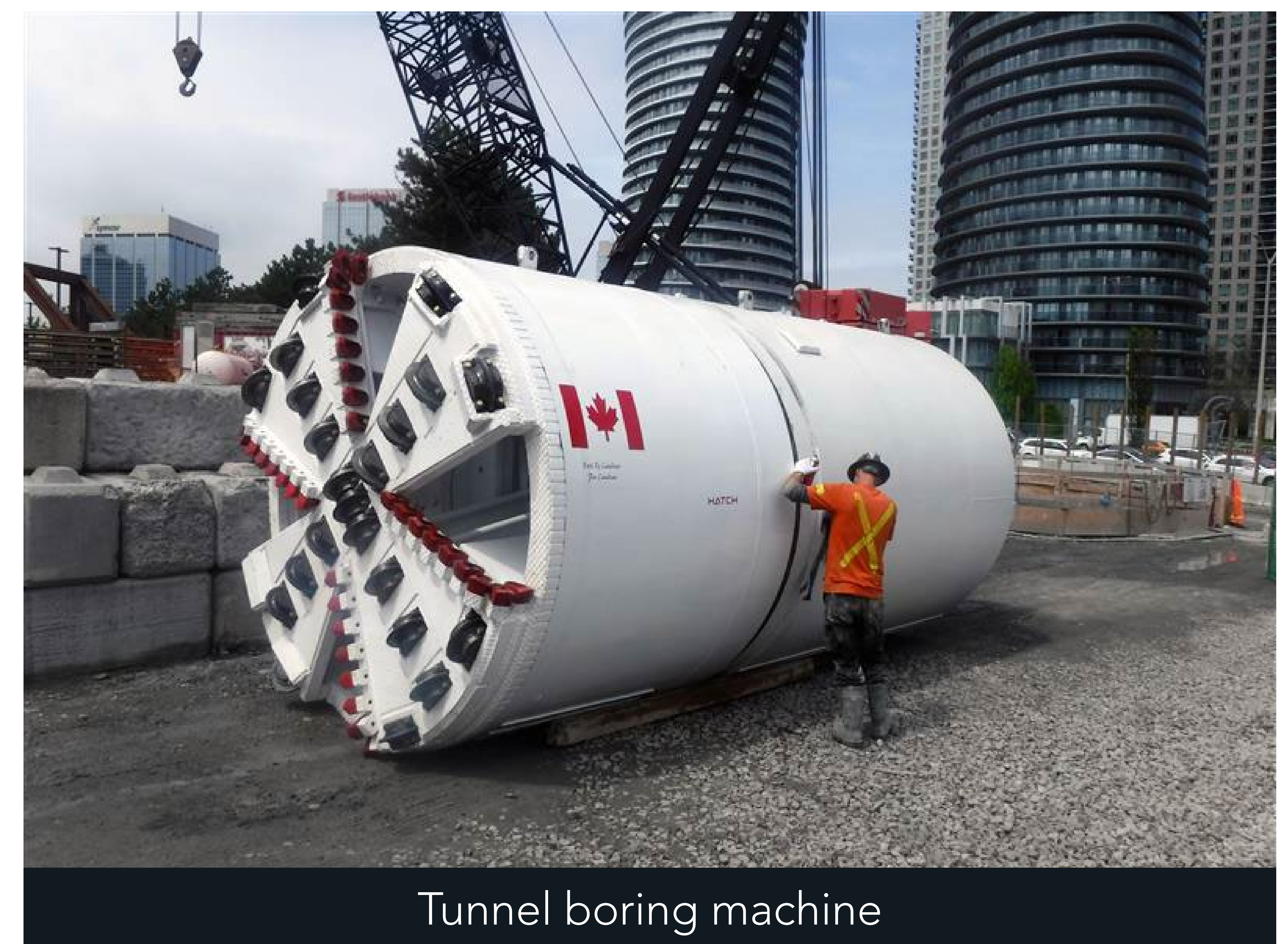
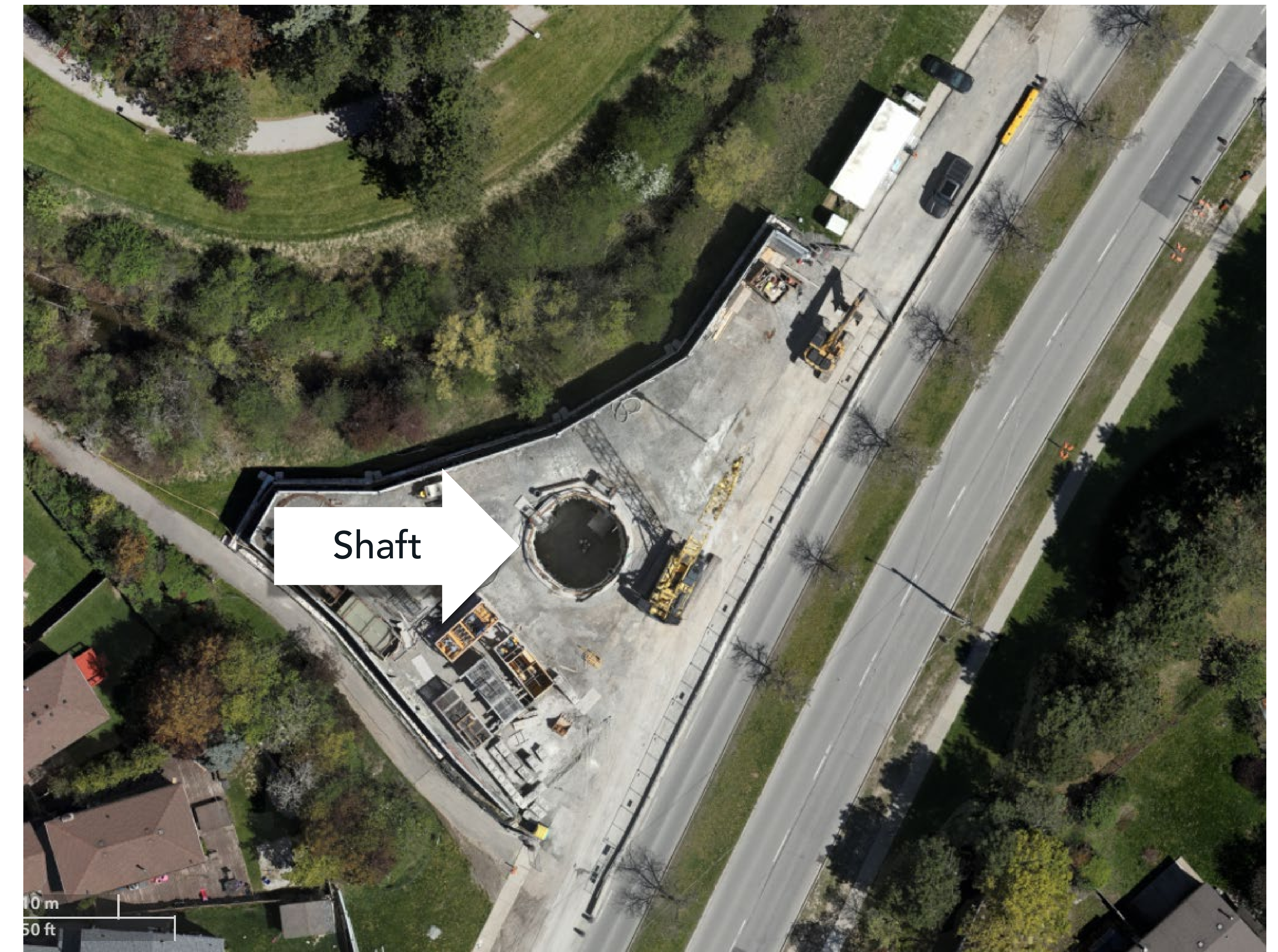
**Shaft:** A deep hole providing access to underground tunnels where work takes place. The shaft is always inside a compound.



**Tunnel Boring Machine:** A large machine used to dig tunnels. A tunnel boring machine has a rotating cutter head in front. The dirt and rock is taken behind it to rail cars and is then lifted to the surface for disposal.



**Watermain:** An underground pipe that brings water from a treatment plant or reservoir to your neighbourhood. The Williams Parkway Watermain is 1.2 metres in diameter.



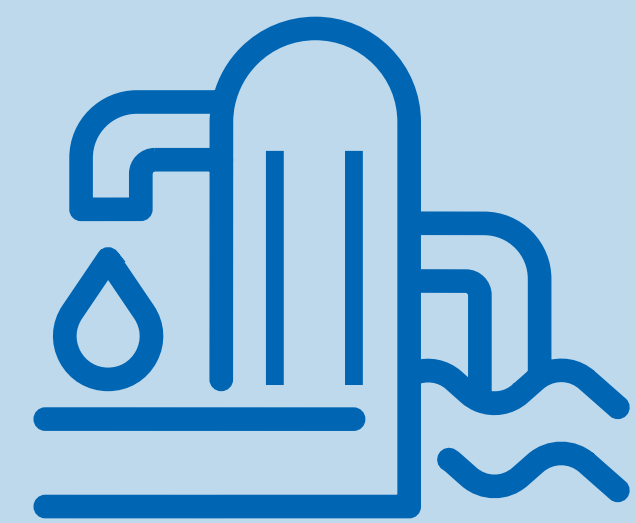
Tunnel boring machine



# Why?



Ontario's *More Homes Built Faster Act* means that Brampton will have more homes, meaning more underground water systems are needed to support this development.



The new watermain for Williams Parkway will provide more water by connecting the existing West Brampton Pumping Station & Reservoir on Mississauga Road to the new East Brampton watermain being built under Dixie Road.

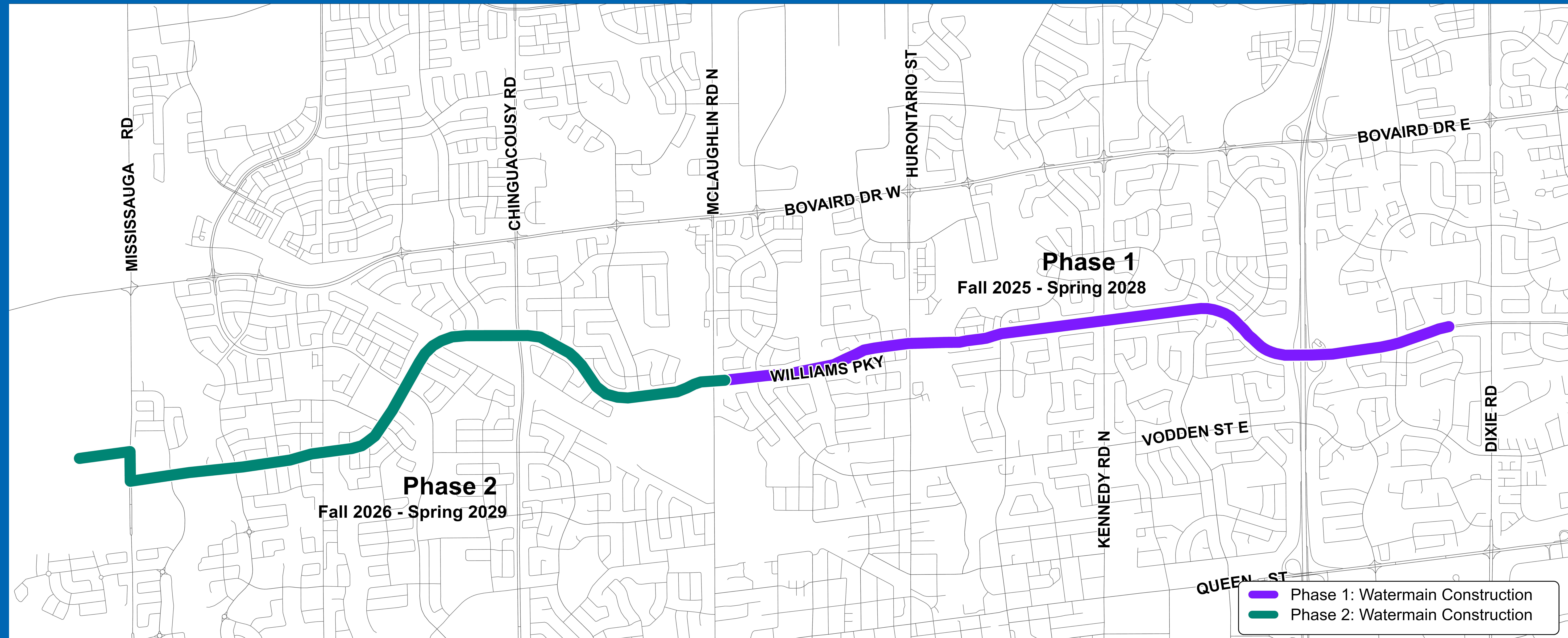


This expansion project allows Peel residents and businesses to access the clean, safe and reliable drinking water they need.





# Where?

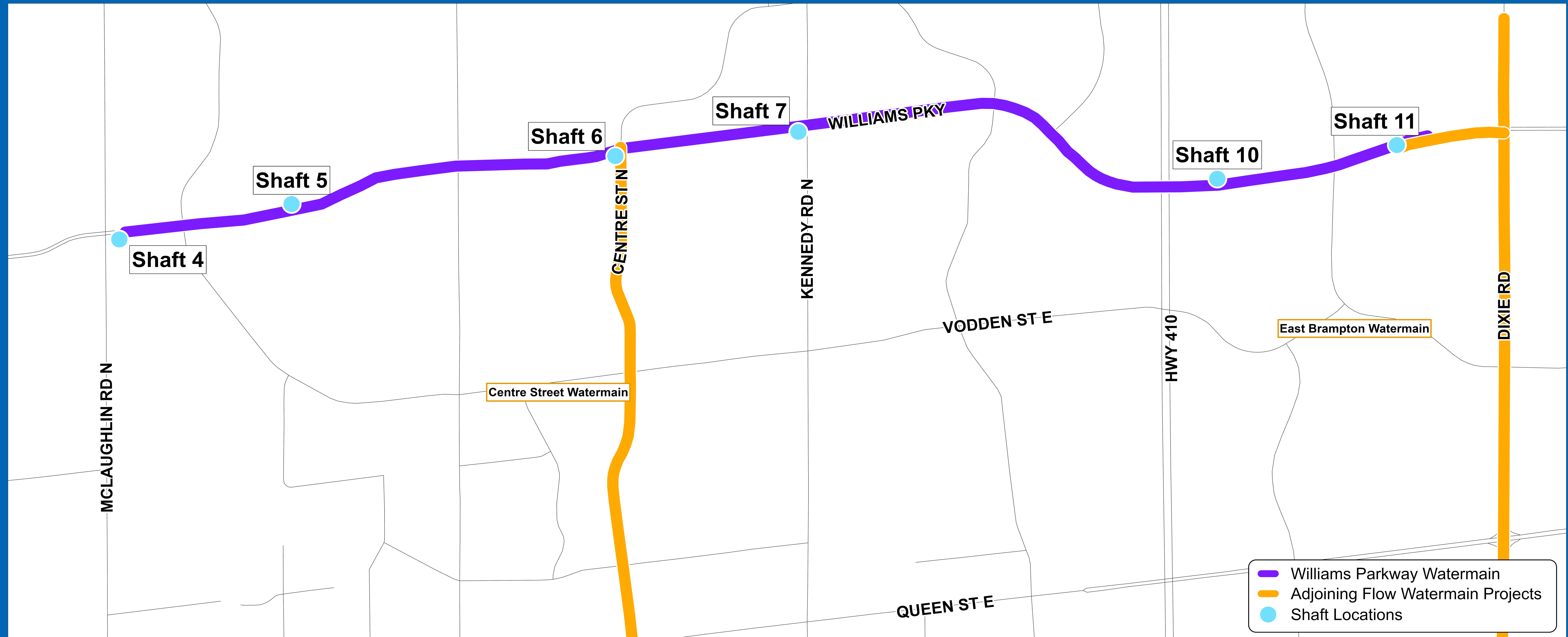


- We are working on **Phase 1** now: between Dixie Road and McLaughlin Road.
- **Phase 2** (McLaughlin Road to West Brampton Pumping Station & Reservoir on Mississauga Road) will take place from 2026 – 2029.



# Where? Phase 1 Shafts

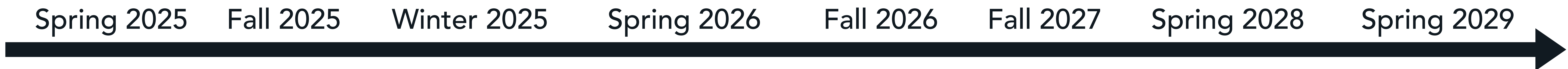
**Flow**  
Building our  
future, faster.



Most work will take place in securely-walled work areas, called shaft compounds. This board shows the shaft locations, along with adjoining projects (Centre Street Watermain and East Brampton Watermain).



# When?



## Phase 1: McLaughlin Road to Dixie Road

**PIC #1:**  
June 19, 2025

**WE ARE HERE**

**Shaft 4 Activities\*:** McLaughlin Road

**Shaft 5 Activities:** Armbro Park

**Shaft 10 Activities:** East of Highway 410

**Shaft 11 Activities:** West of Dixie Road (Newcastle Park)

**Shaft 7 Activities:** Kennedy Road

**Shaft 6 Activities:** Centre Street

\*Shaft activities include compound set-up and fencing, shaft excavation, tunneling, shaft backfill, compound removal, and area restoration.

## Phase 2: McLaughlin Road to Mississauga Road



# Shaft 4: East of McLaughlin Road



- **Where:** Between McLaughlin Road and Vodden Street
- **What you should know:**
  - Eastbound through lanes remain open.
  - Sidewalk on south side of Williams Parkway will close.



# Shaft 5: Armbro Park

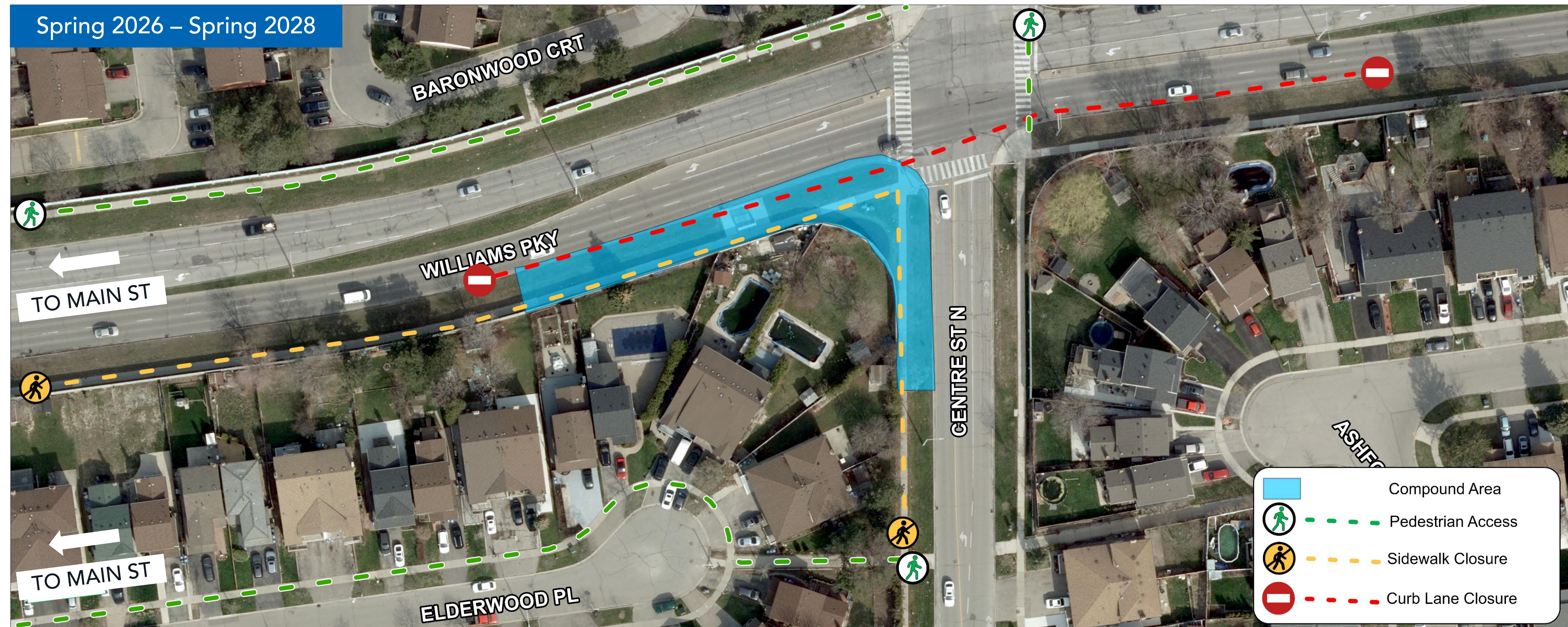


- **Where:** North of Williams Parkway, east of old Orangeville – Brampton Railway
- **What you should know:**
  - Soccer fields at Armbro Park will close during the work and reopen when complete.
  - Sidewalk on north side of Williams Parkway will remain open.
  - Trucks will access the compound from Williams Parkway.



# Shaft 6: Intersection with Centre Street North

**Flow**  
Building our  
future, faster.



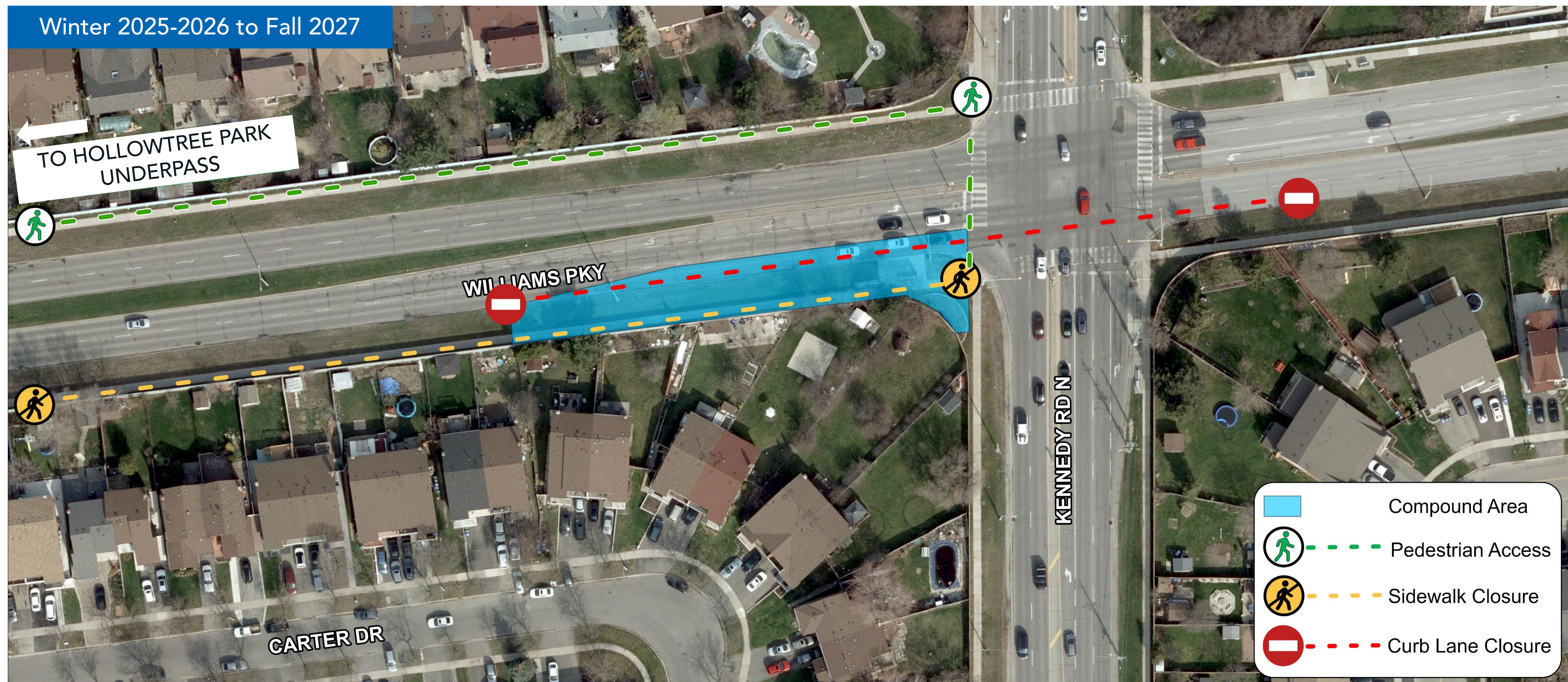
- **Where:** South-west corner of Williams Parkway and Centre Street North
- **What you should know:**
  - Eastbound curb lane on Williams Parkway will close. Expect delays and consider alternative routes.
  - Sidewalk on south side of Williams Parkway and west side of Centre Street North will close.
  - Pedestrians can use Elderwood Place as a detour. Pedestrians travelling east cross at Main Street to sidewalk on north side of Williams Parkway.

Centre Street 750 mm watermain (currently in design) will connect to the Williams Parkway Watermain in or near this shaft.



# Shaft 7: Intersection with Kennedy Road North

**Flow**  
Building our  
future, faster.



- **Where:** South-west corner of Williams Parkway and Kennedy Road North
- **What you should know:**
  - Eastbound curb lane on Williams Parkway will close. Expect delays and consider alternative routes.
  - Sidewalk on south side of Williams Parkway will close.
  - Pedestrians travelling east to cross at the Hollowtree Park underpass.



# Shaft 10: East of Highway 410



- **Where:** North side of Williams Parkway, east of Carpool Lot Road
- **What you should know:**
  - All traffic lanes will remain open.
  - Sidewalk on north side of Williams Parkway will remain open. Carpark will remain open to the public.
  - Pedestrian underpass (Esker Lake Trail) from LaFrance Park will remain open. Construction traffic personnel will be present to assist with pedestrian safety.
  - Access to the compound will be via the carpark to the east of the compound.



# Shaft 11: West of Dixie Road



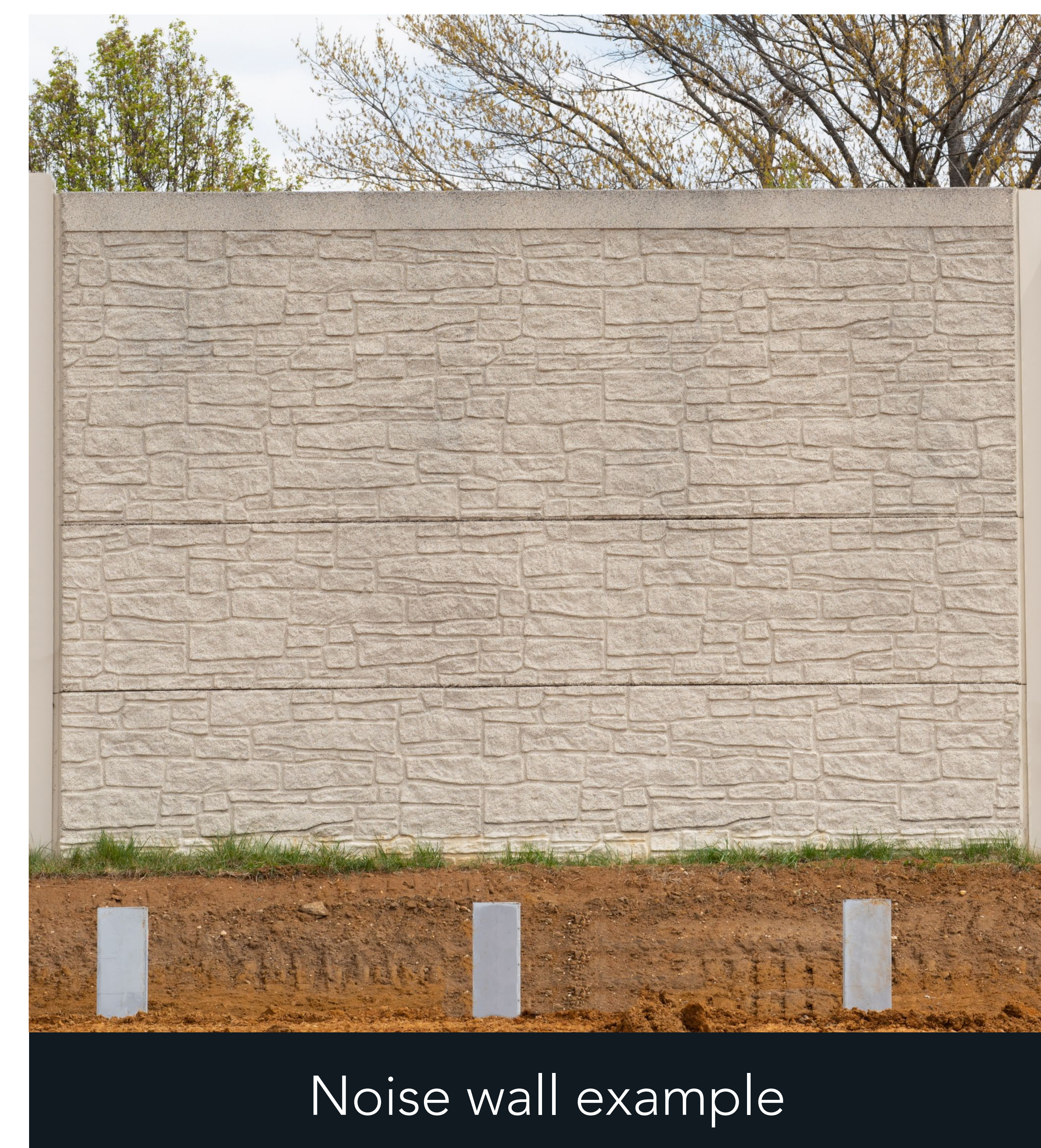
- **Where:** North side of Williams Parkway, west of Dixie Road in Newcastle Park
- **What you should know:**
  - A shaft is currently in use by East Brampton Watermain Project and will be expanded for use by the Williams Parkway Watermain Project.
  - Westbound curb lane and sidewalk on north side of Williams Parkway are currently closed due to East Brampton Watermain Project and will remain closed. Pedestrians to use south sidewalk. Expect delays and consider alternative routes.
  - Trail through Newcastle Park will be closed. Newbridge Crescent will be used as a pedestrian detour route.





# Protecting you from noise, dust and vibration

- Tunneling typically produces less noise and dust than open-cut construction (digging a trench and installing the watermain in the trench).
- Existing noise and vibration levels will be monitored for several weeks before work starts. Monitoring will also happen throughout construction and will be used to let us know if equipment / process adjustments are needed.
- Concrete noise walls, at least 4.5 metres high, will surround each shaft to lower noise levels and contain most dust.
- Any dust on the road will be controlled by water trucks and mechanical sweepers.
- Construction will take place from 7:00 a.m. to 7:00 p.m. to minimize disturbance to the surrounding neighbourhood.
- Homes close to compounds will be offered free preconstruction surveys to document existing property conditions to protect homeowners in the unlikely event of construction-related damage.



Noise wall example

## Questions or Comments?

Call us at 905-791-7800 extension 4409  
or submit your feedback electronically:







# Minimizing Transportation Impacts

**Flow**  
Building our  
future, faster.

- We must get materials to the work areas and remove the waste soil.
- We know that additional truck traffic is inconvenient, but trucks are only allowed to use Williams Parkway, Dixie Road, Bovaird Drive and Highway 410. Trucks will never enter a residential area.
- A maximum of three trucks may queue at any one time at each shaft location.







# Safety first!

- As part of the Flow Program, our safety commitment is a proactive and engaged safety culture resulting in zero accidents or incidents.
- The contractor's Safety Officer will ensure the safety of the community and workers.
- Way-finding signs will direct pedestrians and cyclists around closed sidewalks. Pedestrians will be directed to cross the road safely at the nearest signalized intersection.
- Traffic signs will give motorists advance notice about traffic restrictions.
- All work areas will be fenced off for the safety of both the public and our workers.



Please obey the traffic control personnel and merge safely, when necessary.





# Business and Institutional Care Program

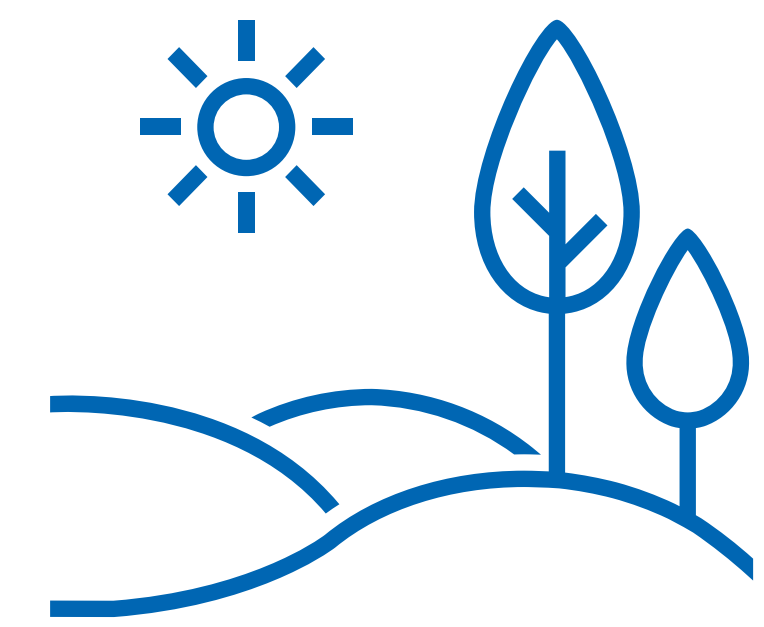
**Flow**  
Building our  
future, faster.

- We care about the businesses, schools, medical centres, and places of worship in our community.
- If you are in or near the construction area, we will visit you to discuss your concerns and needs around things like water use, access and on-street parking.

We will work with you throughout construction to minimize impacts to you.







# Protecting the Environment

**Flow**  
Building our  
future, faster.

*Our goal is to protect the environment and minimize impacts.*

## Trees:

- We will protect as many trees within the work area as we can by placing hoarding (wooden walls) outside of the drip line.
- Any necessary removal or pruning of trees will take place outside nesting season. If we must remove or prune a tree during nesting season, a qualified expert will survey the tree first.
- We will plant over 50 trees to replace those that were lost.





# For more information...

**Flow**  
Building our  
future, faster.



[peelregion.ca/construction/  
project-14-1256](https://peelregion.ca/construction/project-14-1256)



905-791-7800, extension 4409



[construction@peelregion.ca](mailto:construction@peelregion.ca)



Peel Public Works on X  
(formerly Twitter)  
@PeelPublicWorks

## Sign up for email notices

Get project updates to your inbox by signing up for e-notices.

Visit: [peelregion.ca/construction/signup](https://peelregion.ca/construction/signup)  
or

Scan this QR code  
with your cell  
phone camera.





# Thank you for coming!

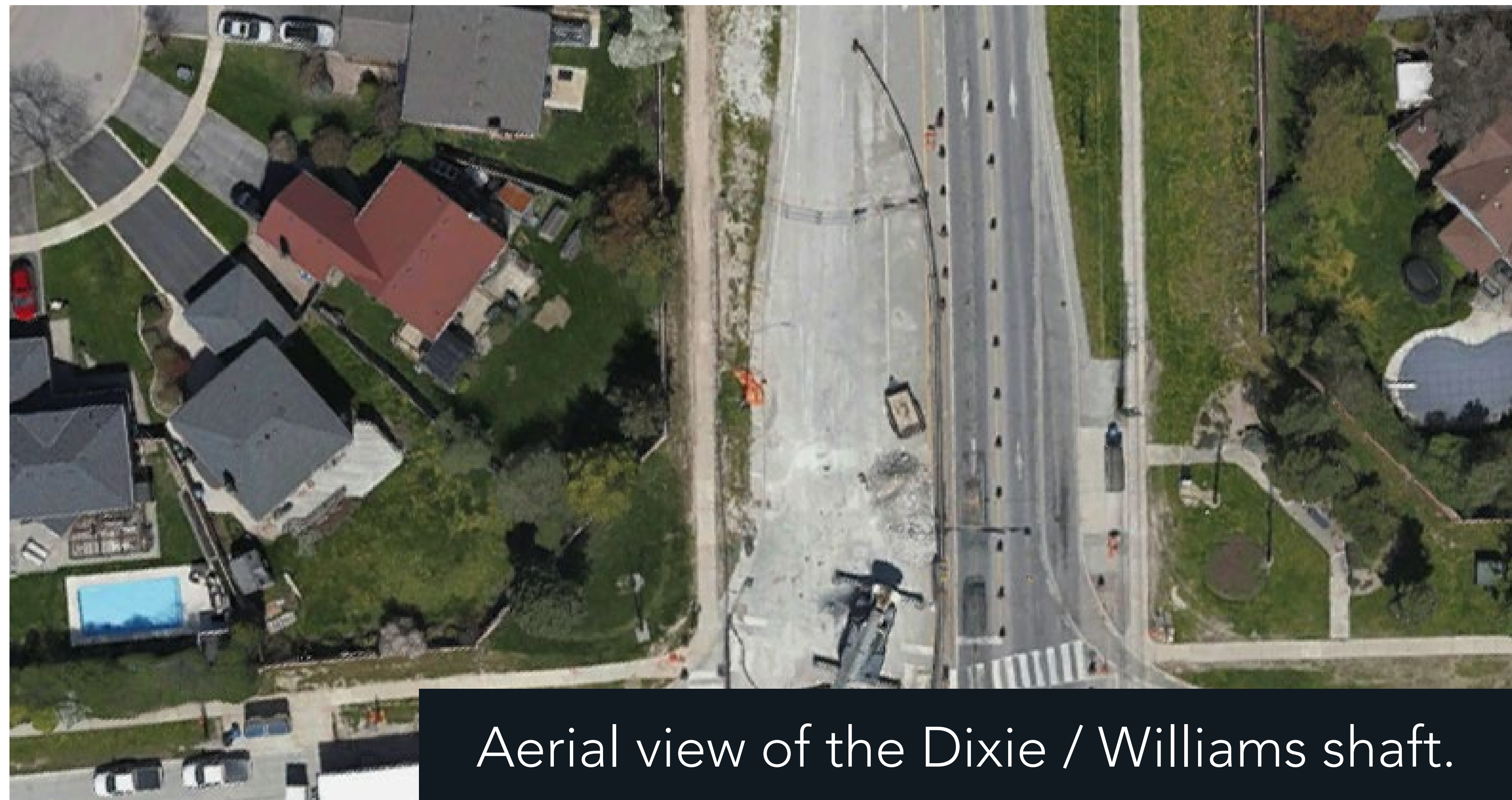


Please complete a  
Comment Sheet.

If you would like to talk to us about the Williams Parkway Watermain project or Flow | Central Brampton, please include your contact information and we'll be in touch with you.



# East Brampton Watermain at Williams Parkway



Aerial view of the Dixie / Williams shaft.

- **Where?** Dixie Road at Williams Parkway
- Williams Parkway Watermain will connect to the East Brampton Watermain, currently being installed under Dixie Road, with a short section going to Newcastle Park.



Aerial view of the Newcastle Park shaft.

- **Where?** Dixie Road at Newcastle Park
- Williams Parkway Watermain will take over the compound at Newcastle Park after the East Brampton Watermain has completed work there.



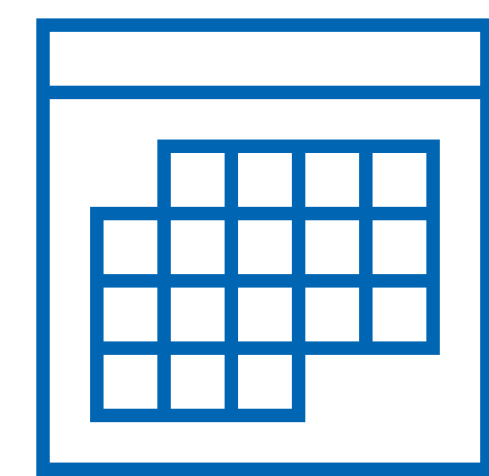
Scan the QR code for up-to-date information on East Brampton Watermain Project



# Continued Collaboration with the City of Brampton

Collaboration between the Flow | Central Brampton Program team and the City of Brampton will enhance the delivery of water and wastewater projects.

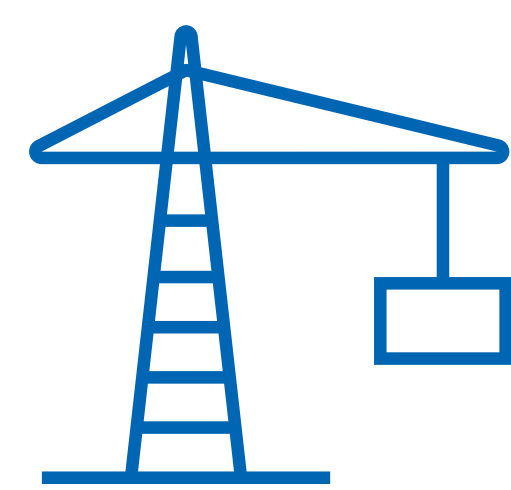
Collaboration is essential to planning for growth in a way that supports our communities.



Alignment of projects – coordination and scheduling



Collaboration across multiple City of Brampton departments



Early engagement with other ongoing City of Brampton projects – roadway and utilities

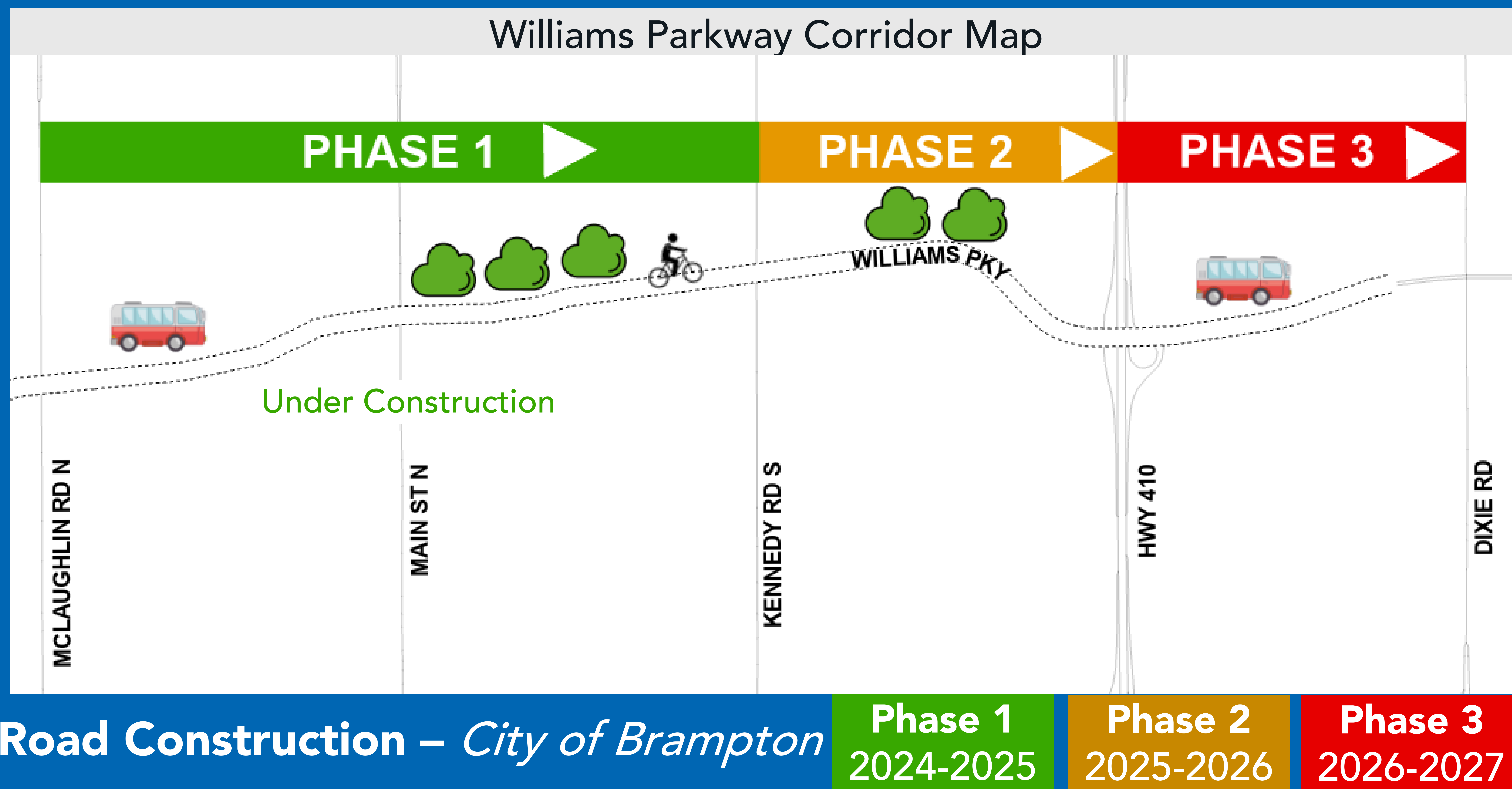


Accelerated / re-prioritized project delivery – in close coordination



# Williams Parkway Redevelopment— From McLaughlin Road To Dixie Road

Public Works and Engineering



Road Construction – *City of Brampton*



Scan the QR code for up-to-date information on Williams Parkway Redevelopment

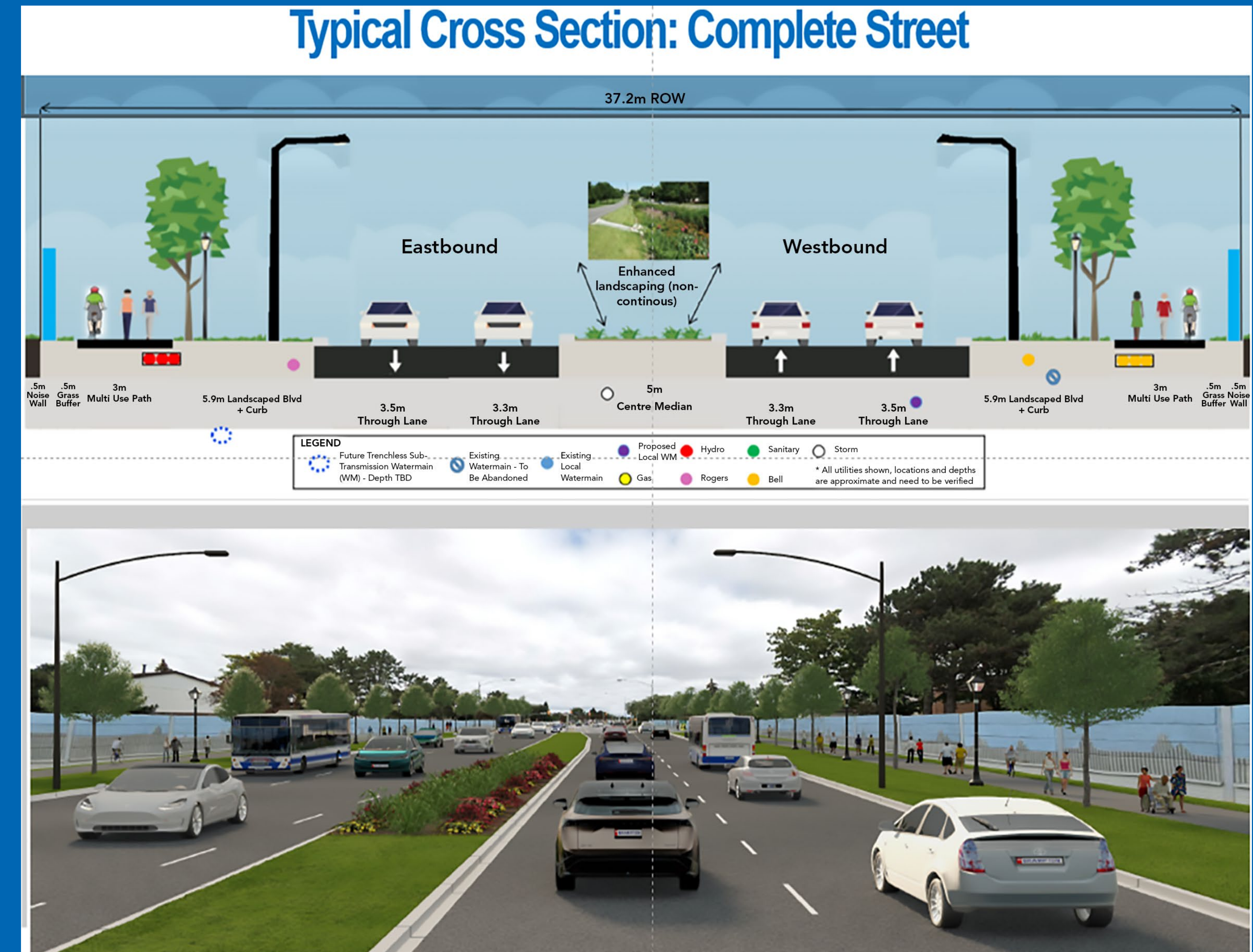


# Williams Parkway Redevelopment–From McLaughlin Road To Dixie Road

Redesign of Williams Parkway includes:

- Four general purpose lanes
- Reconstruction of the existing road
- Centre median planting
- Active Transportation Pedestrian Crosswalk
- Installation of a multi-use path on both sides of the road
- Enhanced streetscaping in the boulevards
- Enhanced stormwater quality and quantity low impact development implementation

Phase 1 design is complete, contract has been awarded and construction has begun.



Scan the QR code for up-to-date information on Williams Parkway Redevelopment