

AECOM

Appendix H

Public Consultation Record



AECOM

Notices



NOTICE OF STUDY COMMENCEMENT AND PUBLIC INFORMATION CENTRE Snow Storage Sites Analysis and Conceptual Design Project

Background:

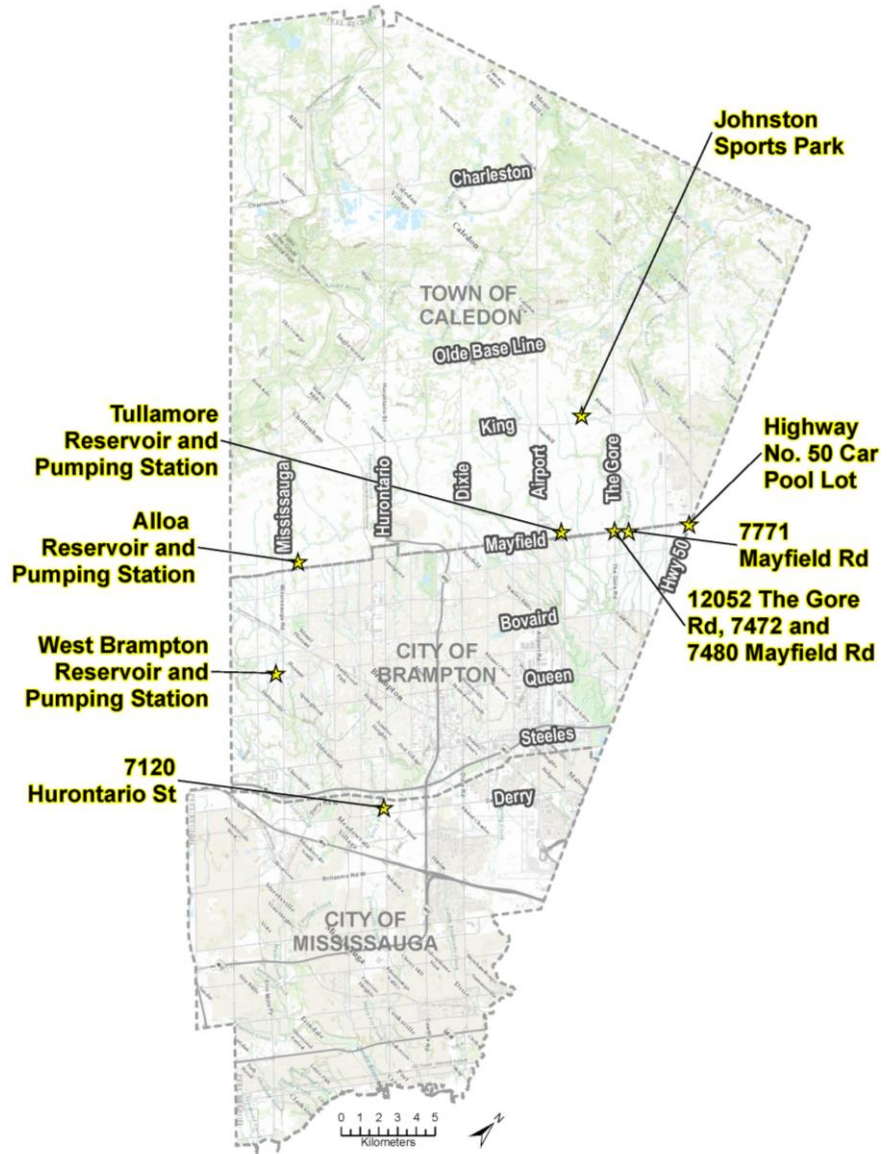
The Region of Peel has begun a Municipal Class Environmental Assessment (EA) to evaluate snow storage opportunities at selected Region of Peel (and one Town of Caledon) owned properties. The snow storage sites identified will provide near and long-term snow storage solutions that are environmentally sound and acceptable for the Region and its area municipalities.

Process:

In accordance with the Municipal Engineers Association (MEA) Class EA document (October 2000, as amended in 2007, 2011 and 2015) snow storage facilities are “Schedule A” or pre-approved projects. However, the Region is following a Schedule B Municipal Class EA planning framework for this study to allow for the evaluation of snow storage siting opportunities in consultation with key stakeholders, regulatory agencies, and the public.

Your Input is Important:

The study including conceptual designs is expected to be completed in Spring 2023. One virtual Public Information Centre (PIC) will be held to present the findings of the EA study and provide opportunities to give feedback to the project team. The PIC will be a narrated video to present the snow storage sites considered and planning process. Once the study is complete, results may be published in a Project File Report and made available for public review and comment. Facility design and construction of preferred snow storage facilities is to be determined by the Region on an individual basis.



Public Information Centre

Content available starting December 8th, 2022 at:

www.peelregion.ca/pw/transportation/construction/environmental-assessment/snow-storage-sites

Contact the Team:

Your input is important to the study. To provide comments, be added to the mailing list or to receive further information about the study, please contact:

Syeda Banuri, M.Eng., P.Eng.

Project Manager, Region of Peel

10 Peel Centre Drive, Suite B

Brampton, ON, L6T 4B9

416-407-7860

syeda.banuri@peelregion.ca

For more information on this study please visit the Region's website at:

<https://www.peelregion.ca/pw/transportation/construction/environmental-assessment/snow-storage-sites.asp>

The Region of Peel is committed to ensure that all Regional services, programs, and facilities are inclusive and accessible. Please contact the Project Manager if you need any accommodations to provide comments and/or feedback for this study.

This notice was first issued on December 1st, 2022

AECOM

Public Information Centre





Project Name: Snow Storage Sites Analysis and Conceptual Design Project

Date: December 8, 2022

Public Information Centre



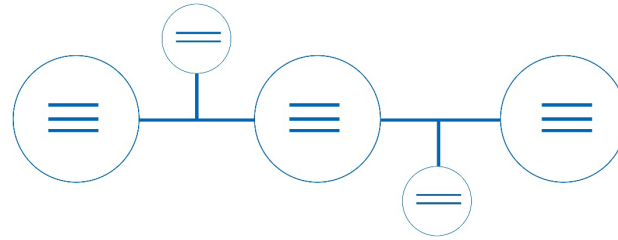
What is the Snow Storage Sites Analysis and Conceptual Design project?

- Identify strategically placed and well-designed snow disposal facilities to effectively store and manage the melt of the snow across Peel Region while mitigating against undesirable environmental and operational impacts
- Evaluate snow storage opportunities
- Implement through the Schedule B Municipal Class Environmental Assessment planning process

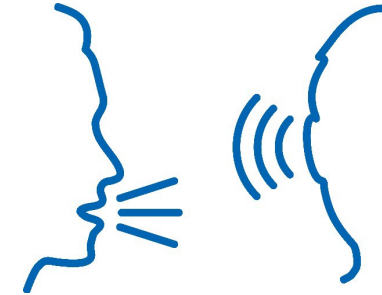
Purpose of the presentation



- Review study purpose and snow storage sites analysis and conceptual design considerations

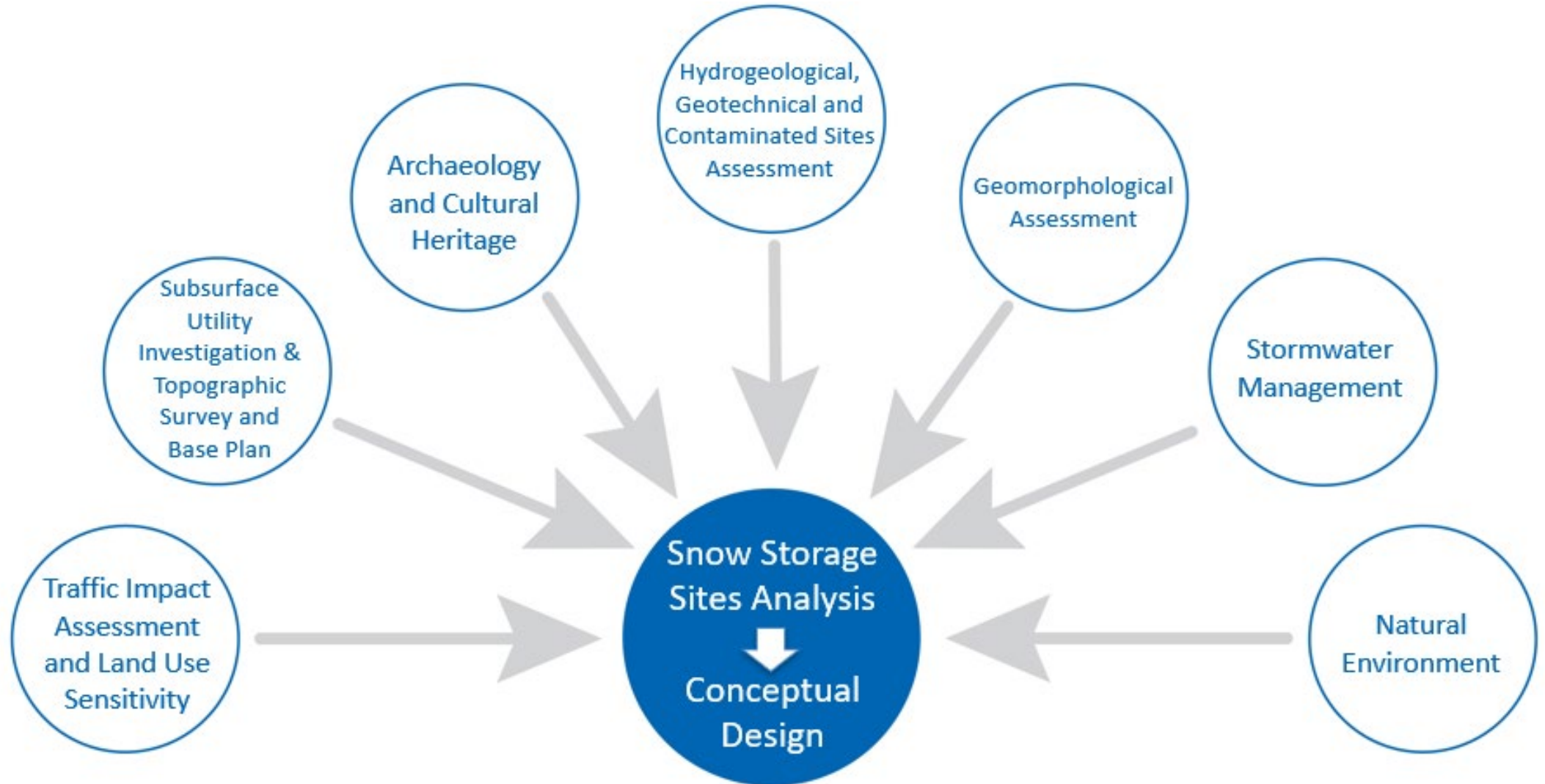


- Present the study timeline, next steps and how to stay engaged



- Receive your feedback on the snow storage sites recommended to proceed to conceptual design

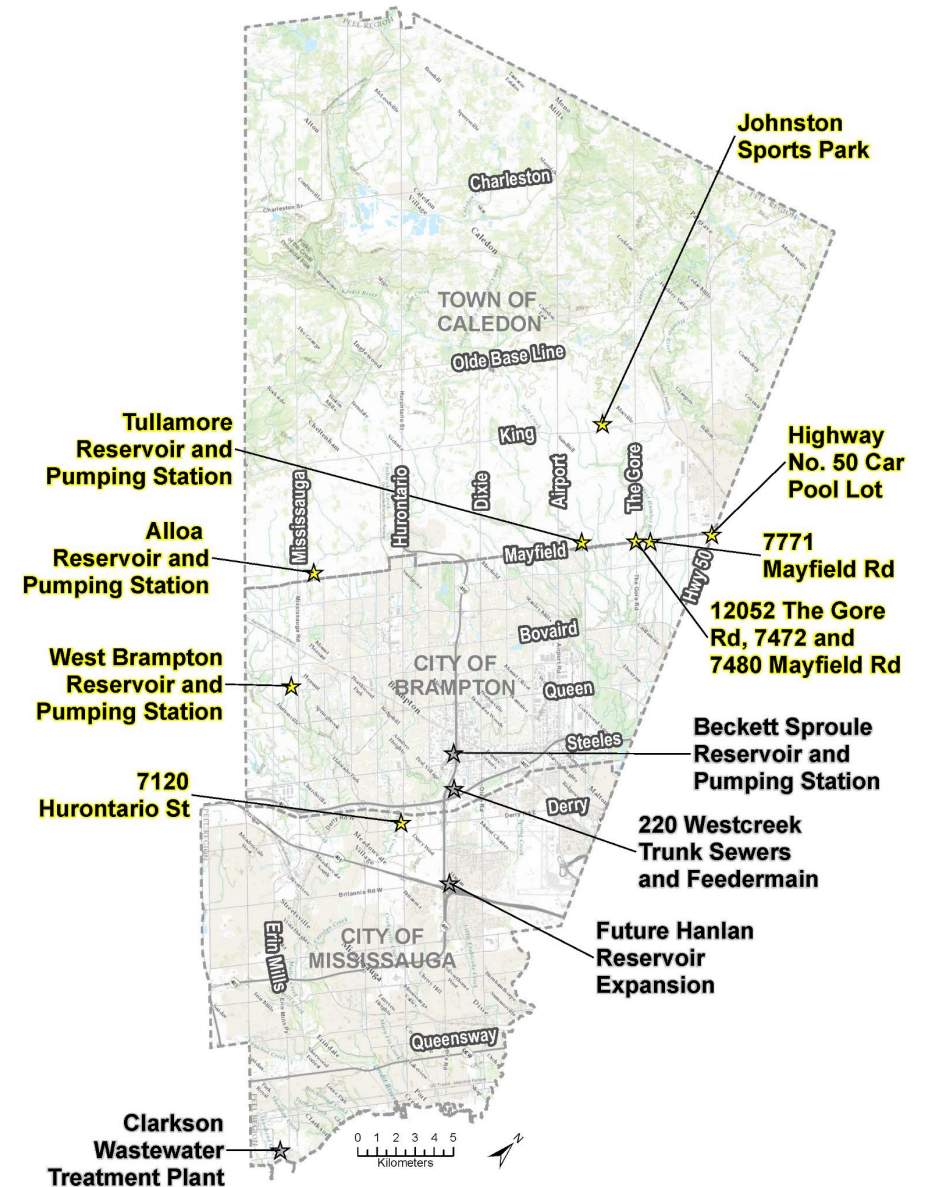
Project scope



Evaluation of 12 snow storage sites

- 4 snow storage sites have been screened out from further analysis
- 8 snow storage sites are validated go forward to design and construction
- For the detailed screening of sites, please visit the project webpage:

www.peelregion.ca/pw/transportation/construction/environmental-assessment/snow-storage-sites



Snow storage sites screened out



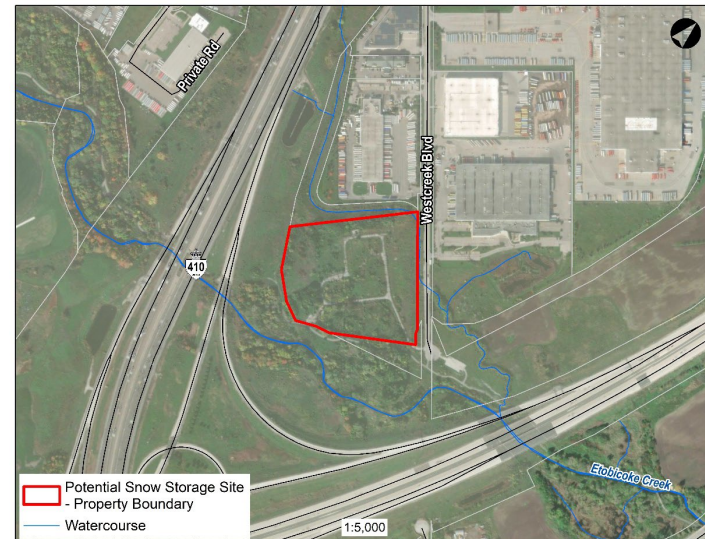
Beckett Sproule Reservoir and Pumping Station



Future Hanlan West Reservoir Expansion



Clarkson Wastewater Treatment Plant



220 Westcreek Boulevard Trunk Sewers and Feedermain

Snow storage sites proposed to be carried forward to design and construction

Highway 50 Carpool Lot



West Brampton Reservoir and Pumping Station



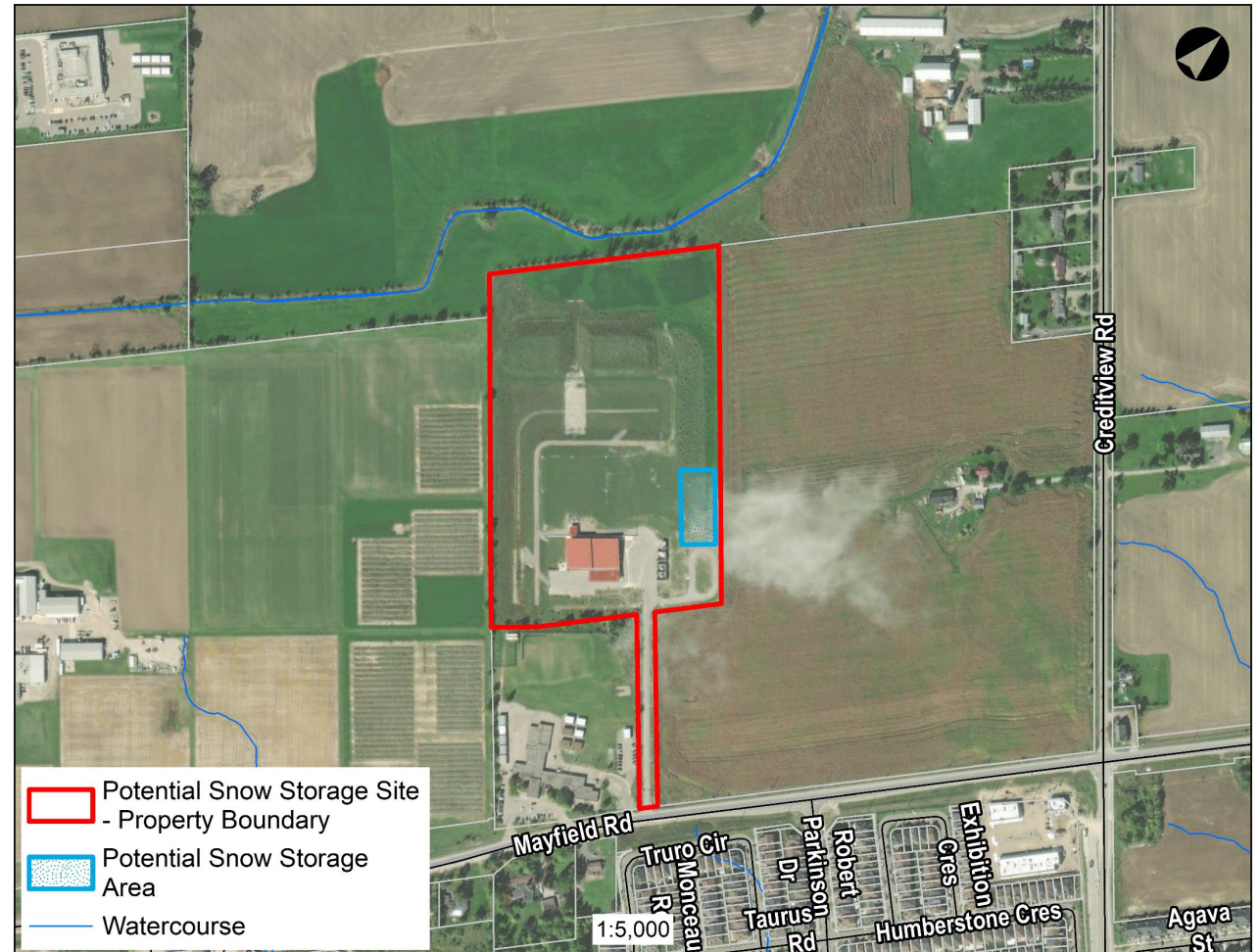
Johnston Sports Park



Tullamore Reservoir and Pumping Station



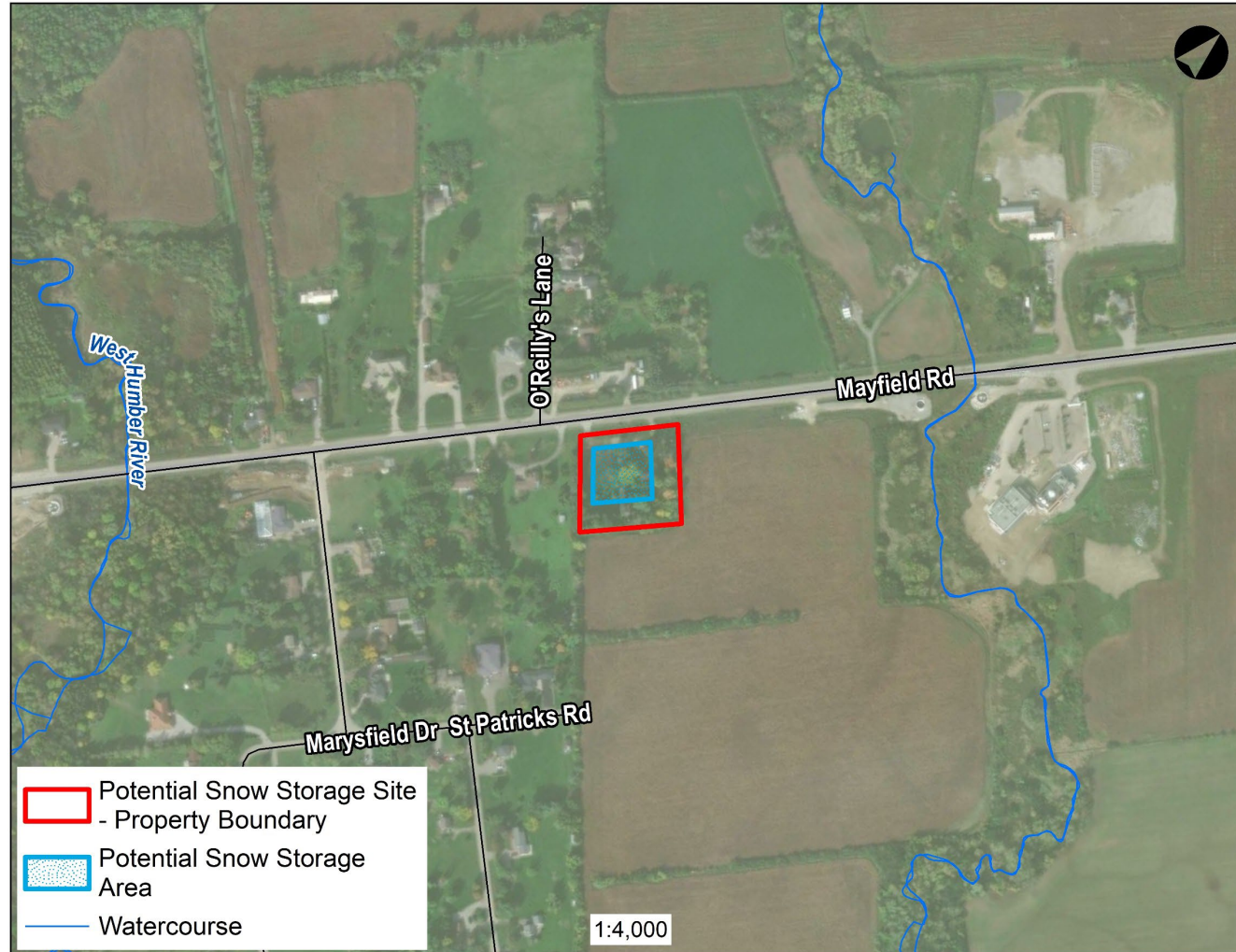
Alloa Reservoir and Pumping Station



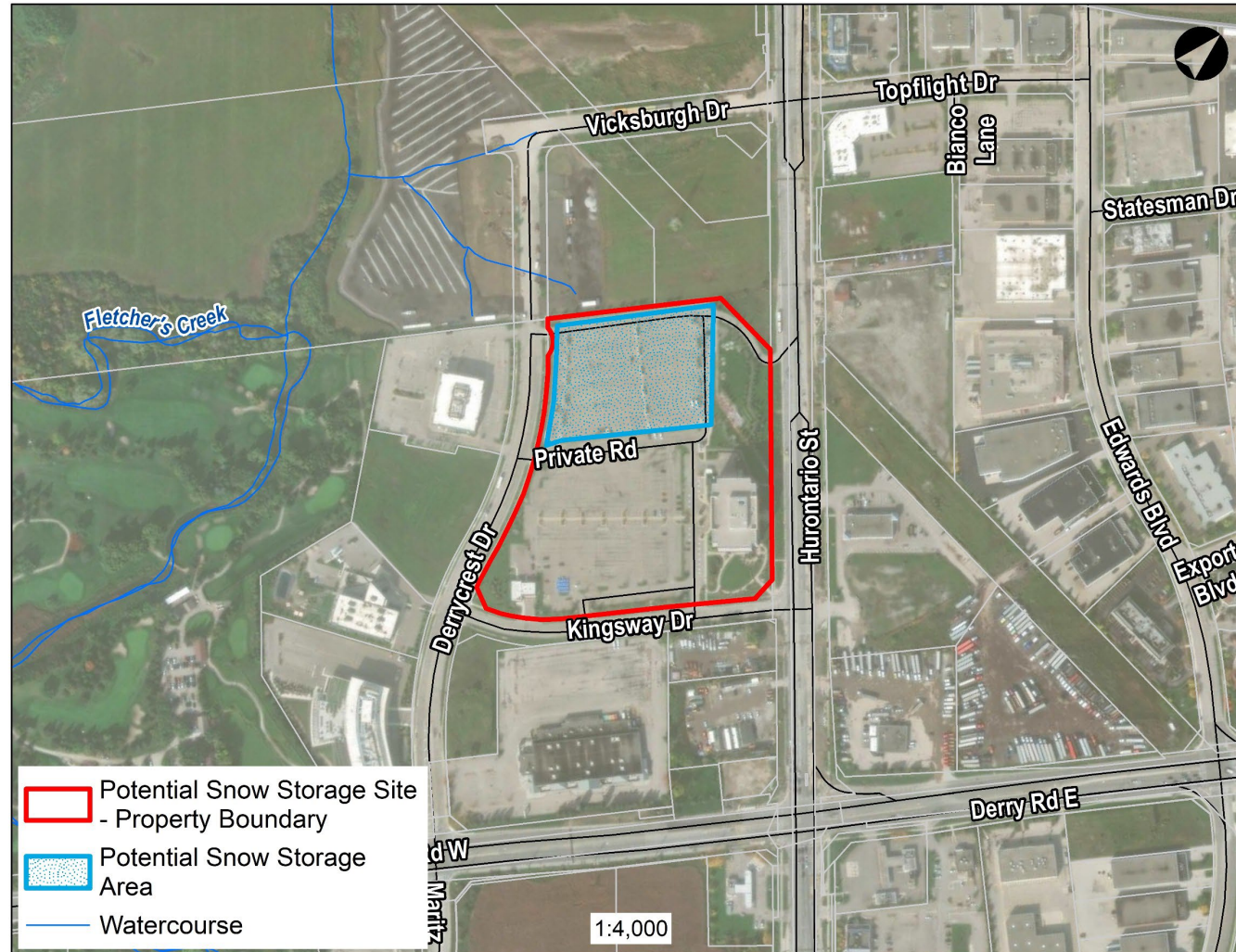
12052 The Gore Road, 7472 and 7480 Mayfield Road



7771 Mayfield Road



7120 Hurontario Street



Conceptual design considerations

- Compliance with applicable provincial and municipal guidelines for snow storage siting and operations (e.g., Ministry of Environment Guideline B-4)
- Develop stormwater management approaches to address potential impacts to water courses and groundwater
- Implement salt mitigation and management strategy



Project timeline and next steps



Next Steps



Review feedback from the public



Document study findings



Prepare conceptual designs for selected snow storage sites



Phased implementation

More questions? Please contact:

Syeda Banuri, M.Eng., P.Eng.
Project Manager
Cell: 416 407 7860
Email: syeda.banuri@@peelregion.ca

Project website:
[www.peelregion.ca/pw/transportation/construction/
environmental-assessment/snow-storage-sites](http://www.peelregion.ca/pw/transportation/construction/environmental-assessment/snow-storage-sites)