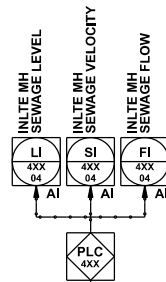


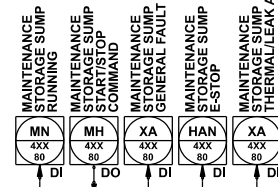
PLC/SCADA

FIELD

TYP. 1  
INLET FLOW AND OVERFLOW  
TO ENVIRONMENT



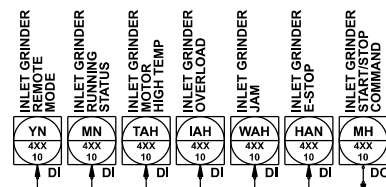
TYP. 3  
DRY WELL FLOOD, INLET MH FLOOD, EMERGENCY  
STORAGE, OVERFLOW TO ENVIRONMENT &  
WET WELL HIGH HIGH



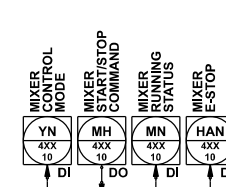
TYP. 3  
DRY WELL FLOOD, INLET MH FLOOD, EMERGENCY  
STORAGE, OVERFLOW TO ENVIRONMENT &  
WET WELL HIGH HIGH



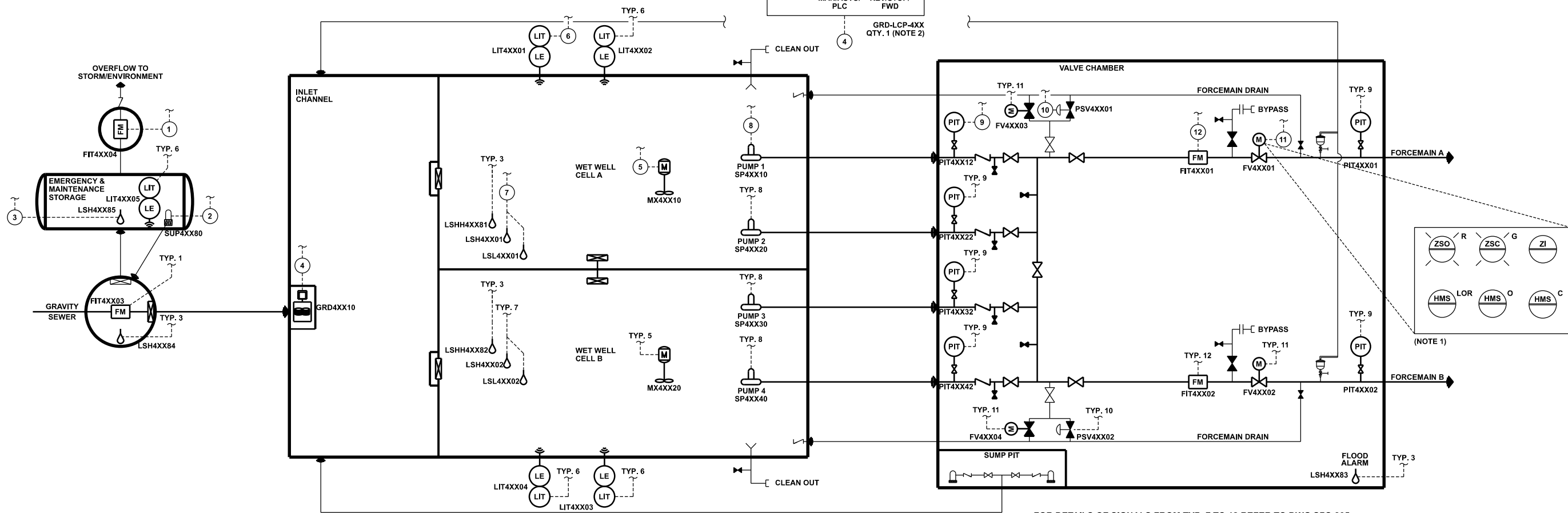
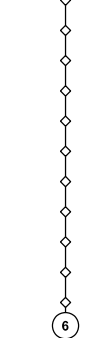
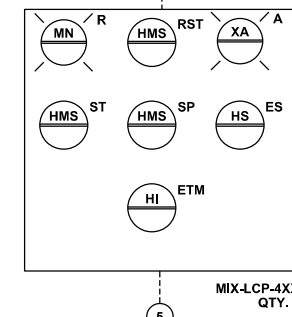
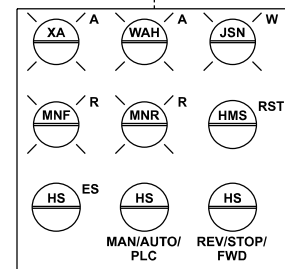
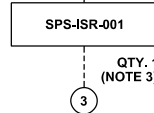
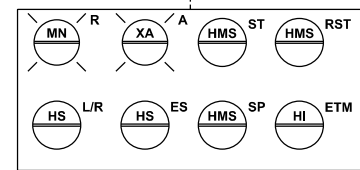
INLET GRINDER



TYP. 5  
MIXER 1 & 2



TYP. 6  
ULTRASONIC/RADAR  
LEVEL



FOR DETAILS OF SIGNALS FROM TYP. 7 TO 12 REFER TO DWG SPS-305.

NOTES:

1. VALVE ACTUATOR INTEGRATED CONTROL. BASED ON VALVE MAKE AND MODEL, IT MAY NOT REFLECT THE EXACT ARRANGEMENT OF INTEGRAL VALVE CONTROL, HOWEVER ALL VALVE ACTUATORS MUST PROVIDE SIMILAR FUNCTIONALITY SHOWN ON THIS DRAWING.
2. REFER TO STANDARD GRINDER PANEL WIRING FOR ADDITIONAL DETAILS.
3. ALL SIGNALS WITH IDENTIFIER ③ SIGNALS ARE TO BE CONNECTED TO ONE COMMON ISR PANEL.



PUBLIC WORKS  
STANDARD DRAWING

SEWAGE PUMPING STATION  
TYPE III P&ID 1 OF 2

REV. DATE: JULY 2024

REVISION 2

APPROVED BY  
MM

DRAWN BY  
ERAMOSA

STD. DWG. NUMBER  
SPS-304

SCALE  
Not to Scale