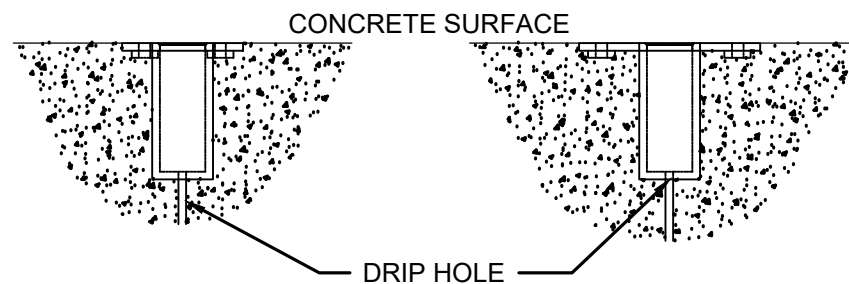
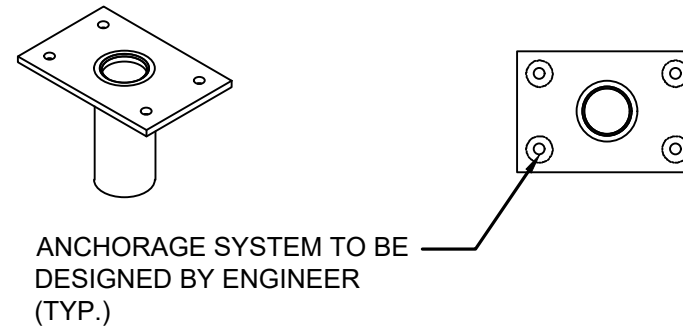
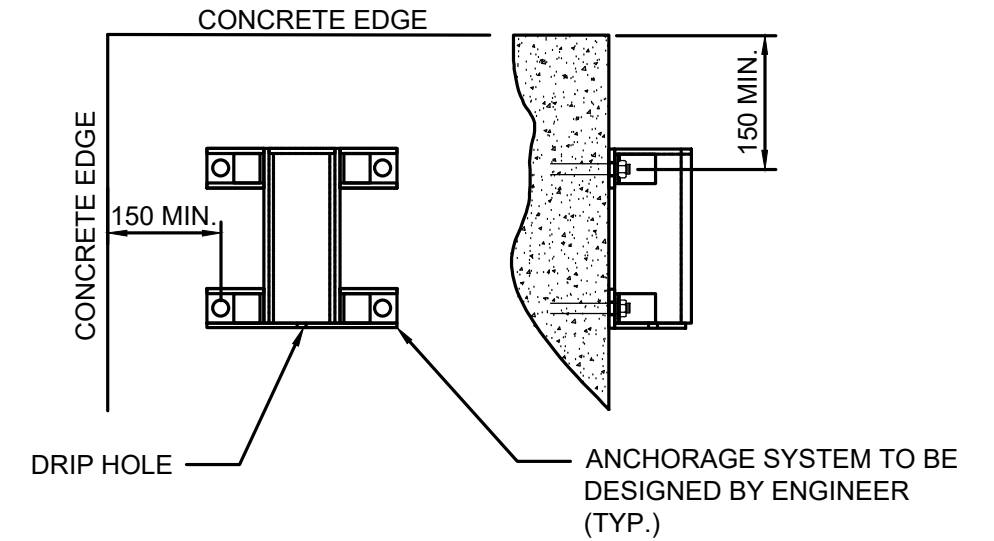


CENTER MOUNT DAVIT SLEEVE DETAIL



FLUSH MOUNT DAVIT SLEEVE DETAIL



WALL MOUNT DAVIT SLEEVE DETAIL

TRAVEL RESTRAINT ANCHOR POINT NOTES:

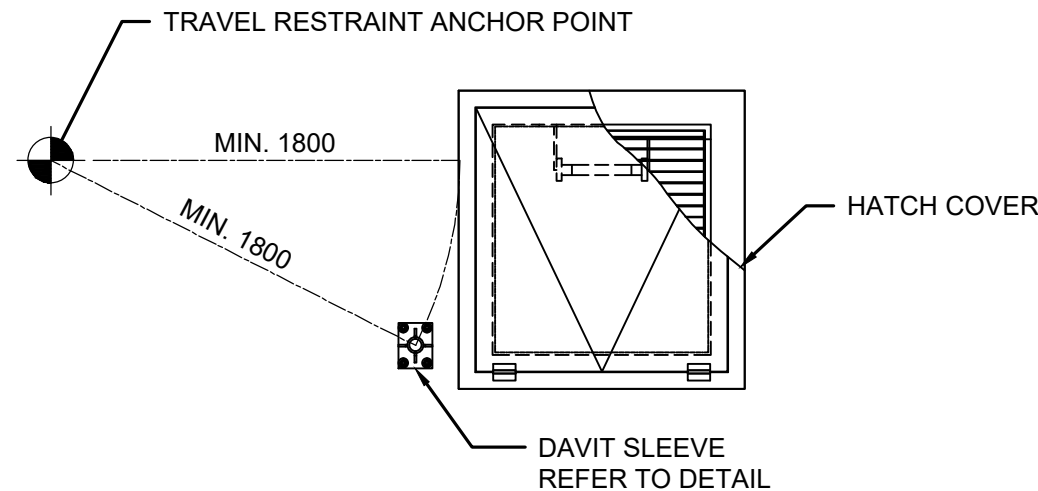
1. ALL MATERIALS AND HARDWARE TO BE CORROSION RESISTANT TYPE 316 SS.
2. ALL ANCHOR POINTS TO HAVE A MINIMUM CAPACITY OF 22.2kN.
3. TRAVEL RESTRAINT ANCHOR POINT MAY NOT BE USED FOR FALL ARREST ANCHOR POINT.
4. ENGINEER MUST COORDINATE THE LOCATION OF THE ANCHOR POINT WITH THE LENGTH OF LANYARD TO BE USED TO ENSURE THE USER CANNOT FALL INTO THE HATCH OPENING. ANCHOR POINTS MUST BE MOUNTED MINIMUM 1800mm AWAY FROM THE DAVIT SLEEVE AND EDGE OF HATCH.

GRAB BAR NOTES:

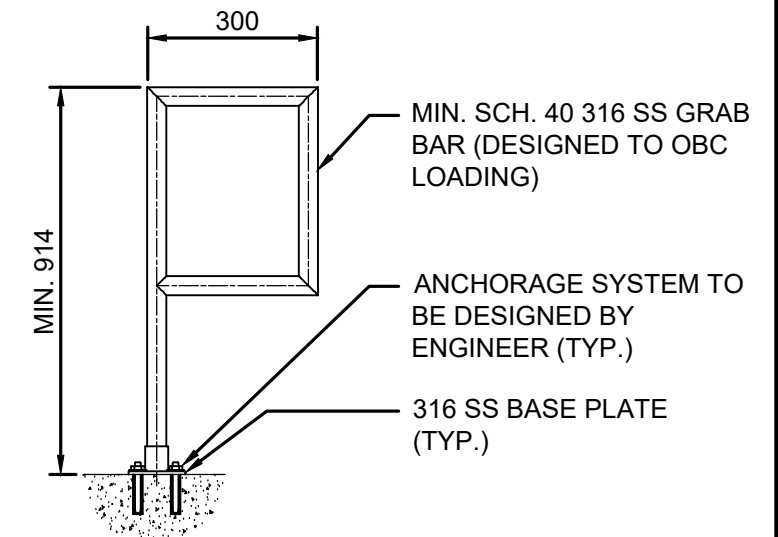
1. ALL MATERIALS AND HARDWARE TO BE CORROSION RESISTANT TYPE 316 SS.
2. ALL HARDWARE TO BE 316 SS.
3. WELDING PROCEDURE TO CONFORM TO CSA W47.1 AND W47.2. WELDERS MUST BE CERTIFIED TO CSA W59.1 AND W59-2.

DAVIT SLEEVE NOTES:

1. THIS STANDARD IS TO BE READ IN CONJUNCTION WITH THE REGION OF PEEL SEWAGE PUMPING STATION DESIGN STANDARDS.
2. ALL MATERIALS AND HARDWARE TO BE CORROSION RESISTANT TYPE 316 SS.
3. ALL DAVIT SLEEVES TO HAVE A SINGLE USER CAPACITY OF 205kg WITH A MINIMUM 4:1 SAFETY FACTOR. ALL DAVIT SLEEVES TO HAVE A VERTICAL LOAD CAPACITY OF 22.2kN.
4. PERSONNEL ACCESS DAVIT SLEEVES ARE TO BE USED FOR ENTRY OF PERSONNEL TO HATCH. DAVIT SLEEVES ARE NOT TO BE USED FOR LIFTING OF EQUIPMENT.
5. ALL DAVIT SLEEVES USED FOR LIFTING OF EQUIPMENT ARE TO BE DESIGNED WITH A CAPACITY CORRESPONDING TO THE EQUIPMENT BEING LIFTED.
6. DAVIT SLEEVES MUST BE MOUNTED TO CONCRETE SURFACE USING MECHANICAL ANCHORS OR EPOXY ANCHORS. ANCHOR SIZE, EMBEDMENT, SPACING AND EDGE DISTANCES TO BE DETERMINED BY ENGINEER.
7. ACTUAL ANCHOR BOLT EDGE DISTANCE TO BE DETERMINED BY ENGINEER. EDGE DISTANCE SHALL BE NO LESS THAN 150mm.
8. DEBRIS IN BOLT HOLES MUST BE CLEANED OUT PRIOR TO INSTALLATION OF ANCHOR BOLTS.
9. ALL DAVIT SLEEVES TO ACCEPT A 78mm DAVIT MAST.
10. EACH DAVIT SLEEVE IS TO BE SELF DRAINING AND EQUIPPED WITH A DAVIT SLEEVE CAP.



TRAVEL RESTRAINT ANCHOR POINT DETAIL



ACCESS HATCH GRAB BAR DETAIL



PUBLIC WORKS
STANDARD DRAWING

PERSONNEL DAVIT SLEEVE, TRAVEL RESTRAINT
ANCHOR POINT AND GRAB BAR DETAILS

REV. DATE: APRIL 2021

APPROVED BY
MNB

DRAWN BY
GMBLuePlan

STD. DWG. NUMBER
SPS-112

SCALE
Not to Scale