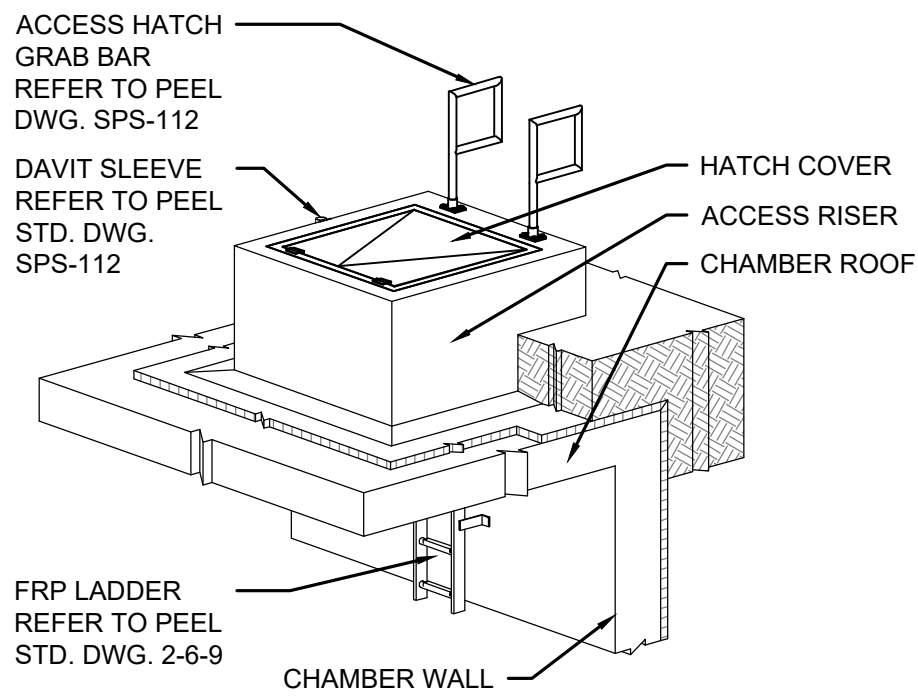
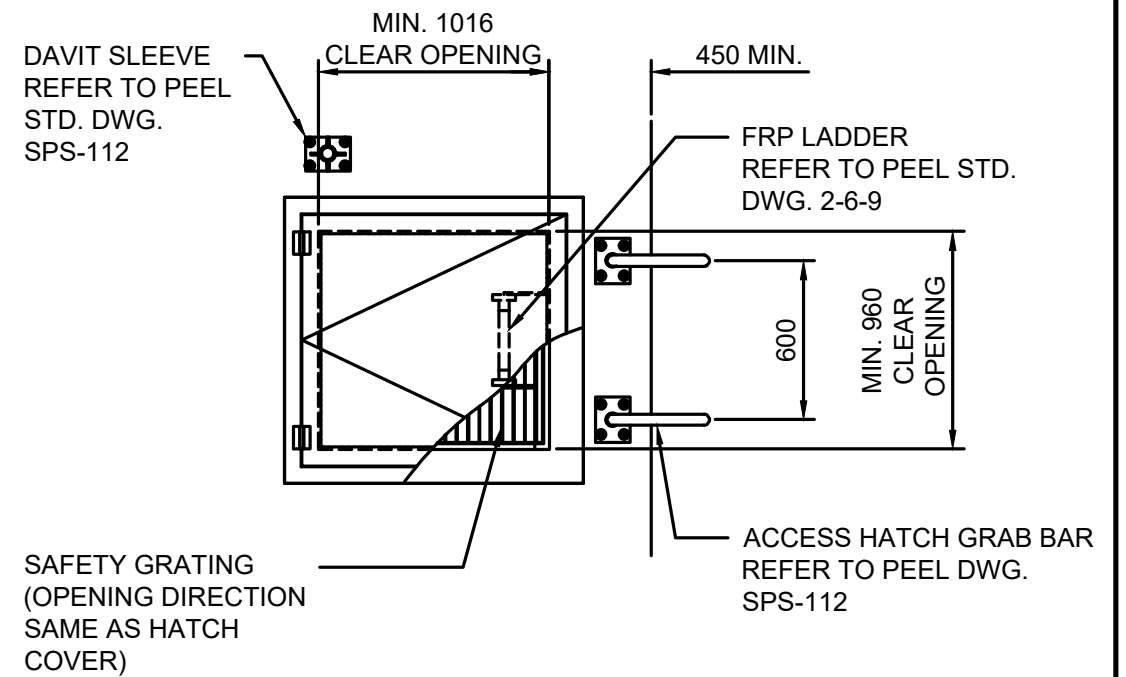


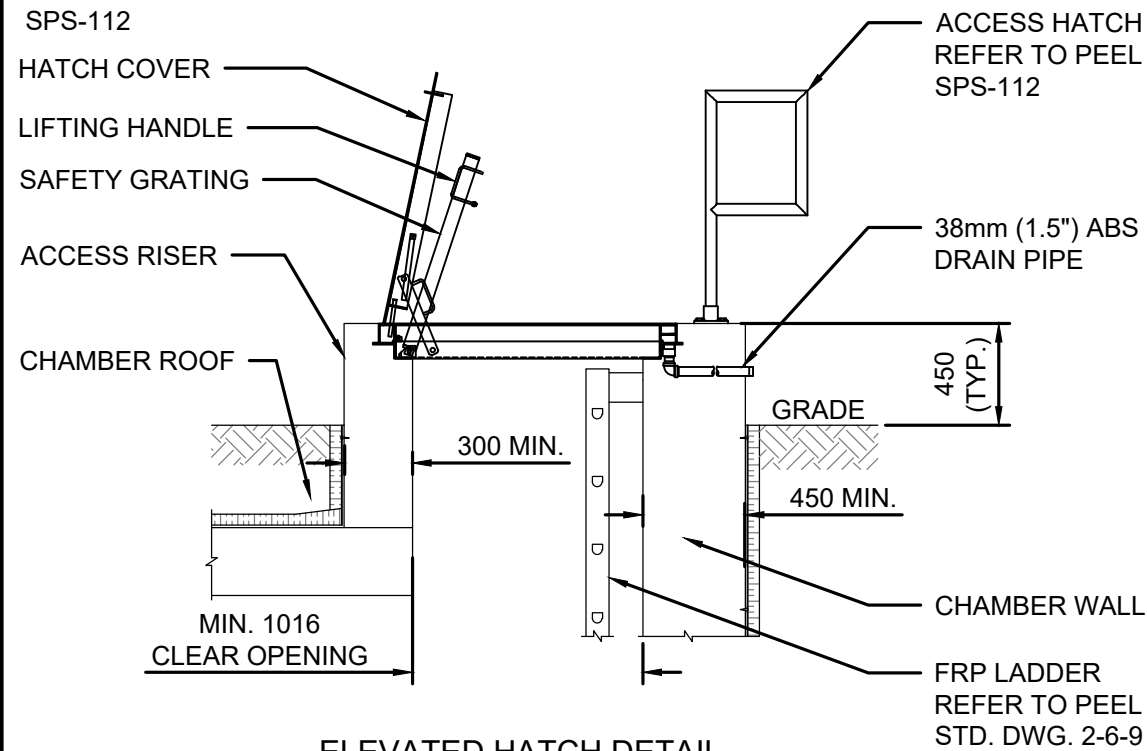
ELEVATED HATCH DETAIL



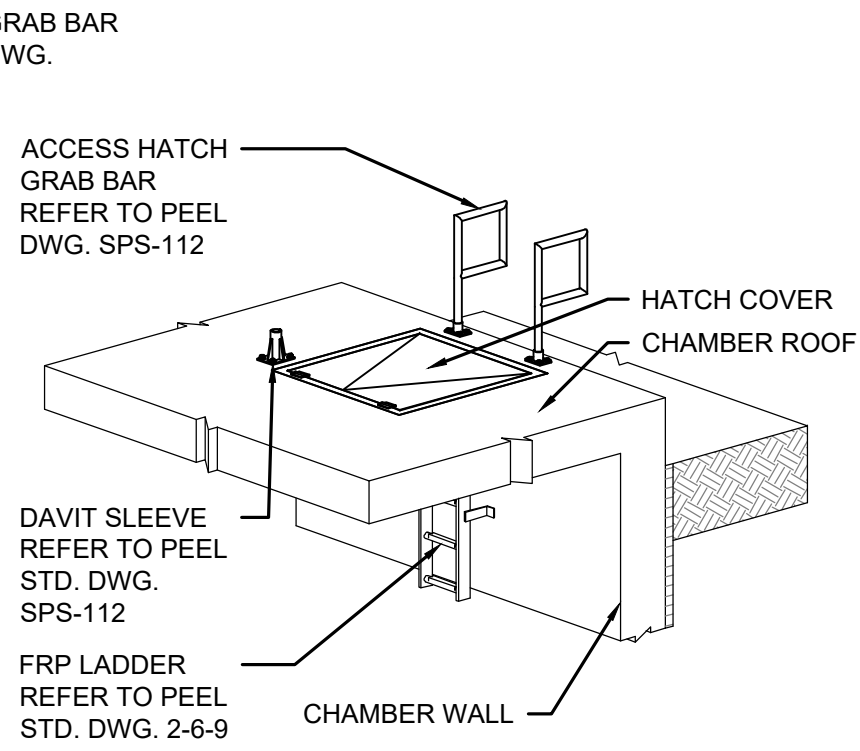
ELEVATED HATCH ISOMETRIC



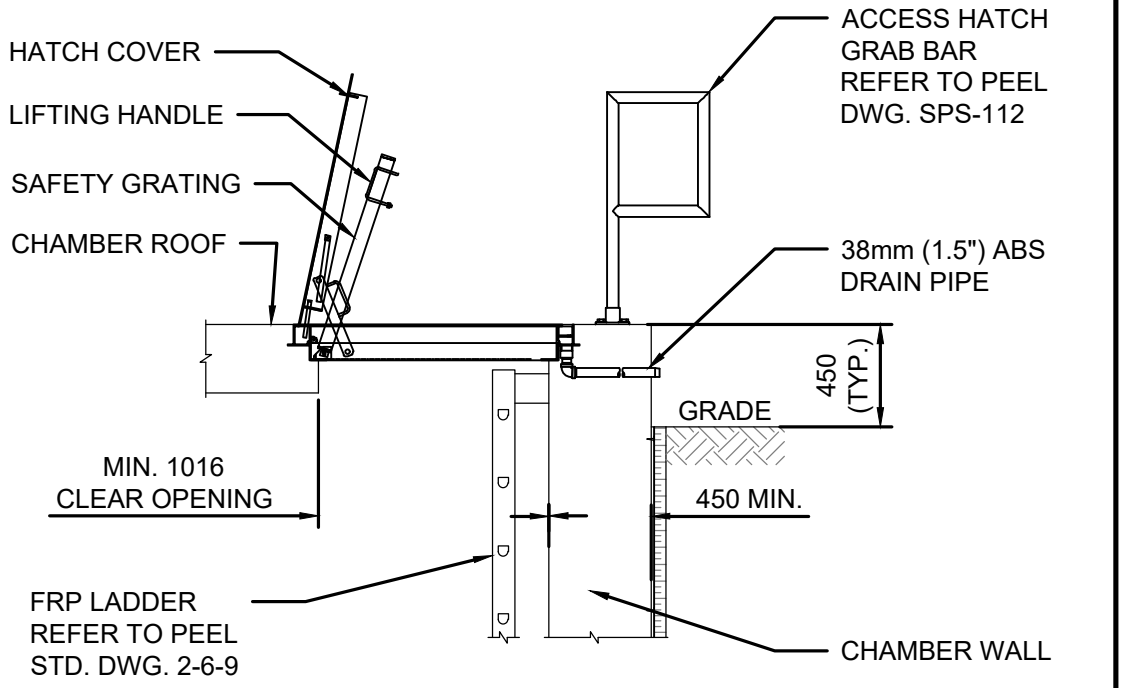
FLUSH HATCH DETAIL



FLUSH HATCH DETAIL



FLUSH HATCH ISOMETRIC



FLUSH HATCH ISOMETRIC

- HATCH NOTES:**
1. THIS STANDARD IS TO BE READ IN CONJUNCTION WITH THE REGION OF PEEL SEWAGE PUMPING STATION DESIGN STANDARDS.
 2. HATCH COVER SHALL DESIGNED TO SUPPORT A MINIMUM SPECIFIED LIVE LOAD OF 14.4kPa WITH A MAXIMUM DEFLECTION OF 1/180 OF THE SPAN.
 3. HATCH COVER SHALL BE ALUMINUM.
 4. ALL HARDWARE TO BE TYPE 316 SS.
 5. ALL ALUMINUM IN CONTACT WITH CONCRETE SHALL RECEIVE TWO (2) COATS OF BITUMINOUS PAINT.
 6. SAFETY GRATING TO BE USED AS SECONDARY FALL PROTECTION ONLY.
 7. REFER TO PEEL STD. DWG. 2-6-9 FOR FRP LADDER DETAILS.
 8. REFER TO PEEL STD. DWG. SPS-112 FOR DAVIT SLEEVE, TRAVEL RESTRAINT ANCHOR POINT AND GRAB BAR DETAILS.
 9. EQUIPMENT REMOVAL HATCHES (I.E. PUMPS, VALVES, AND GRINDERS) TO FOLLOW SIMILAR ARRANGEMENT AS SHOWN HEREIN, HOWEVER, THE GRAB BAR AND LADDER ARE NOT REQUIRED.

	PUBLIC WORKS STANDARD DRAWING		REV. DATE: APRIL 2021
	HATCH DETAILS		APPROVED BY MNB
			DRAWN BY GMB/uePlan
		STD. DWG. NUMBER SPS-111	SCALE Not to Scale