

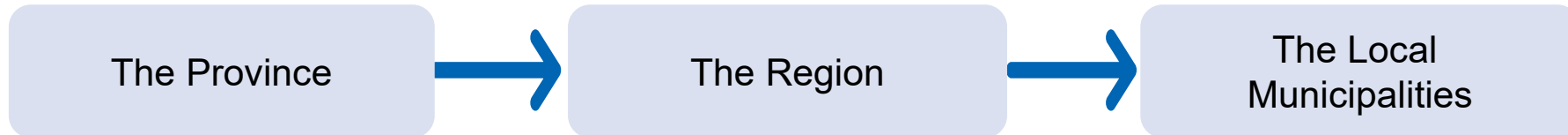
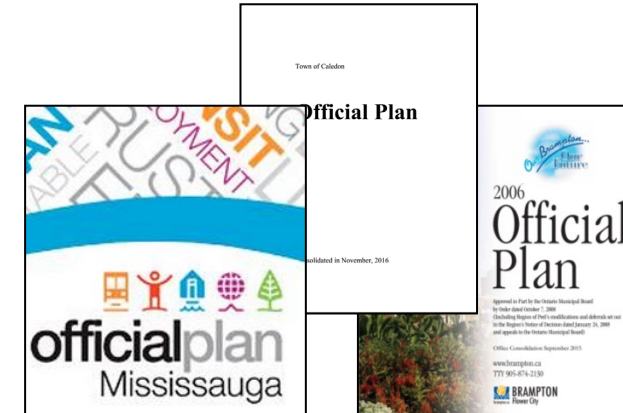
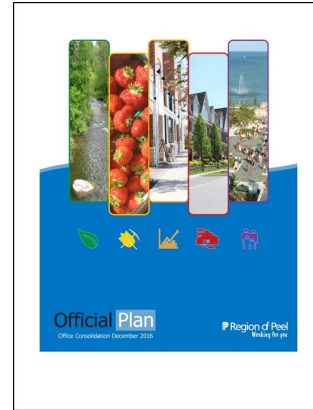
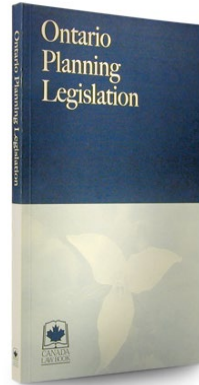
# Overview of Regional and Local Planning Roles and Processes

*Planning and Growth Management Committee  
March 18, 2021*

Adrian Smith, Chief Planner and Director  
Regional Planning and Growth Management

John Hardcastle, Interim Director  
Development Services

# Land Use Planning Policy Framework



- Planning Act
- Provincial Policy Statement
- Growth Plan
- Greenbelt Plan
- Oak Ridges Moraine Plan
- Niagara Escarpment Plan

- Regional Official Plan
  - Official Plan Review and Amendments
  - Regional Planning Studies
  - Settlement Boundary Expansion
  - Major Transit Station Area Planning
  - Environmental Studies
  - Resource Studies
  - Employment Areas

- Strategic Plans
- Area Municipal Official Plans
- Land Use Approvals
- Secondary Plans
- Block Plans
- Zoning By-laws
- Plans of Subdivision
- Site Plans
- Other Planning Act Tools

# Planning Act Approval Authority

- Upper tier MCR's - adopted by Regional Council - Provincial Approval Authority
- Regional OP Amendment – Regional Council Approval Required
- Lower Tier OP's and OP Amendments – adopted by Local Council – Regional Approval Authority
- Plans of Subdivision – Regional Approval Authority
- Consents – Regional Approval Authority
- Zoning By-laws – Local Council Approval Authority

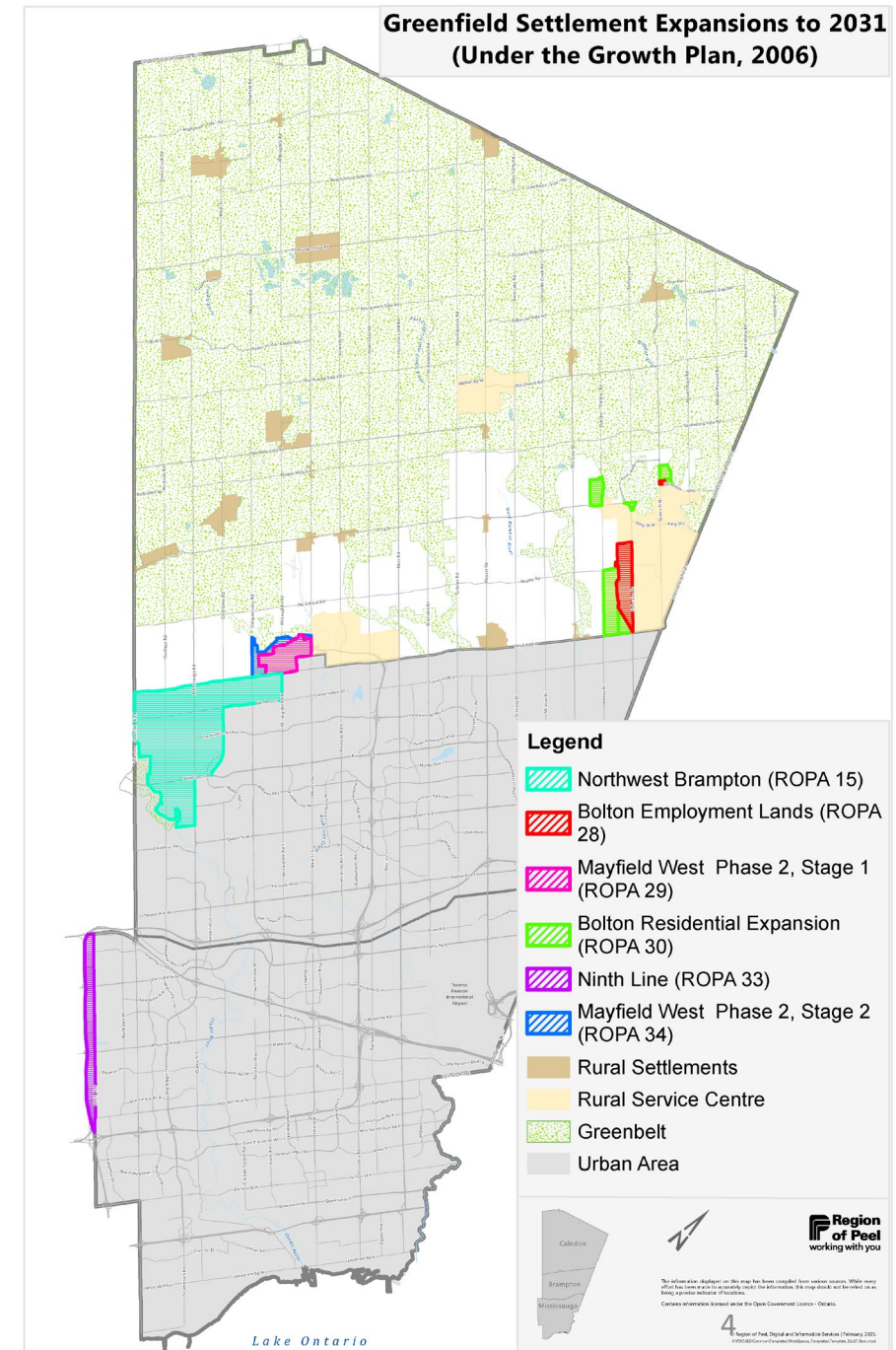
## Regional Delegation of Approval Authority

- Delegation By-laws – The Region permits local approval subject to compliance with Provincial and Regional Policy:
  - Local OP's and MCR's – Delegation not permitted
  - Local OP Amendments – Delegation By-law (1-2000)
  - Subdivisions – Delegation By-law (9-2001)
  - Consents - Delegation By-law (5-1989)

# Planning for Growth to 2031

## Peel Regional Official Plan Review - 2007-2021

- Implemented the Growth Plan 2006
- Regional Official Plan Amendment (ROPA) 24 allocated population and job growth across Peel
- Alongside intensification, multiple settlement expansion ROPAs were required to locate greenfield growth in Mississauga, Brampton, and Caledon

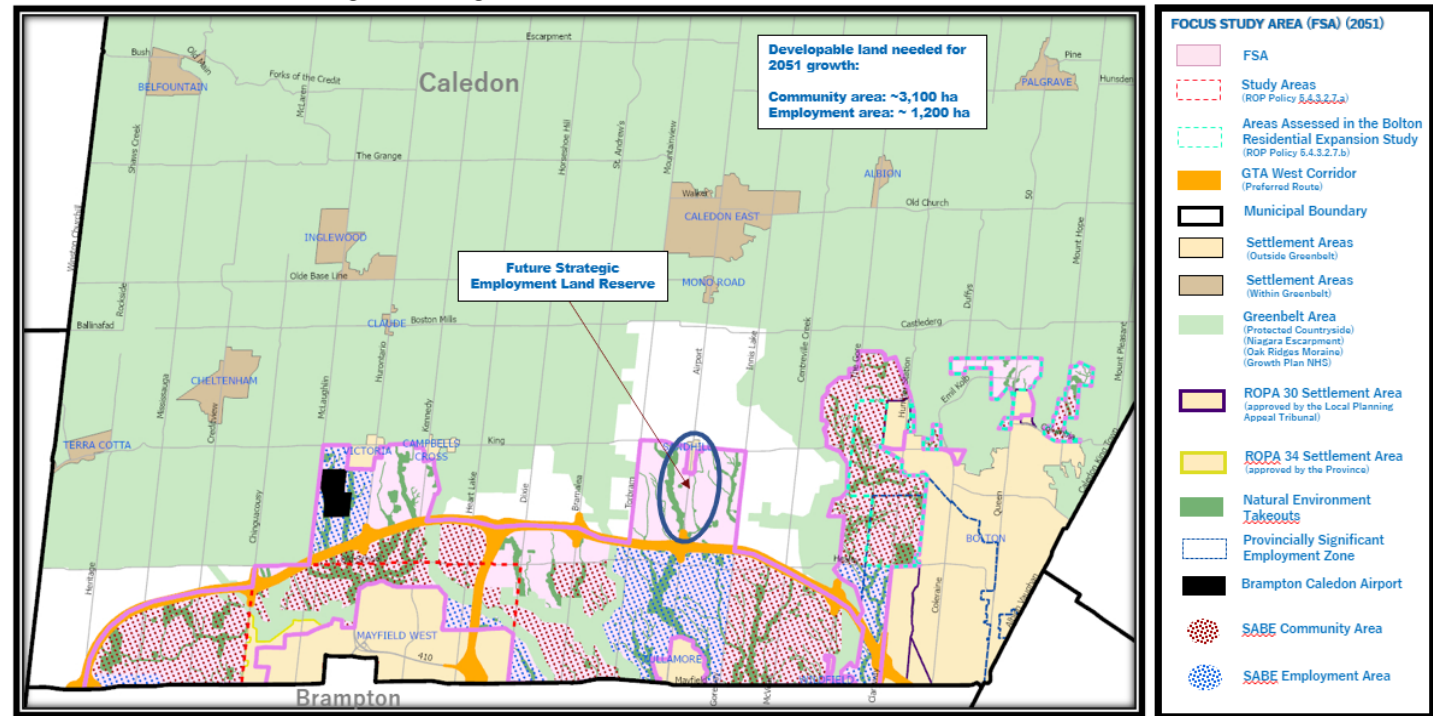


# Planning for Growth to 2051

## Peel 2041+ Regional Official Plan Review – Ongoing

- Implementing the Growth Plan 2019
- Alongside intensification, greenfield growth is required in Caledon as Brampton and Mississauga are built-out

**SABE: Concept Map** (December 2020, updated with ROPA 30 Settlement)



# Growth Allocation Steps

- Provincial Growth Plan allocation provided
- Demographic analysis on household headship rates, age profile, immigration / emigration, PPU, market analysis, employment trends
- Work with locals to assess existing plans, potential intensification opportunity, community visions
- Prepare detailed distribution of growth for analysis purposes
- Establish Official Plan policy with overall population for each local and required targets per Provincial policy:
  - Intensification target
  - Greenfield density target
  - Density targets for Strategic Growth Areas (UGC, MTSAAs)

**Note:** The following is generalized mapping for discussion purposes. Specific policies and designations may be draft or under review/appeal. For all approved and in effect mapping, see the Regional Official Plan.

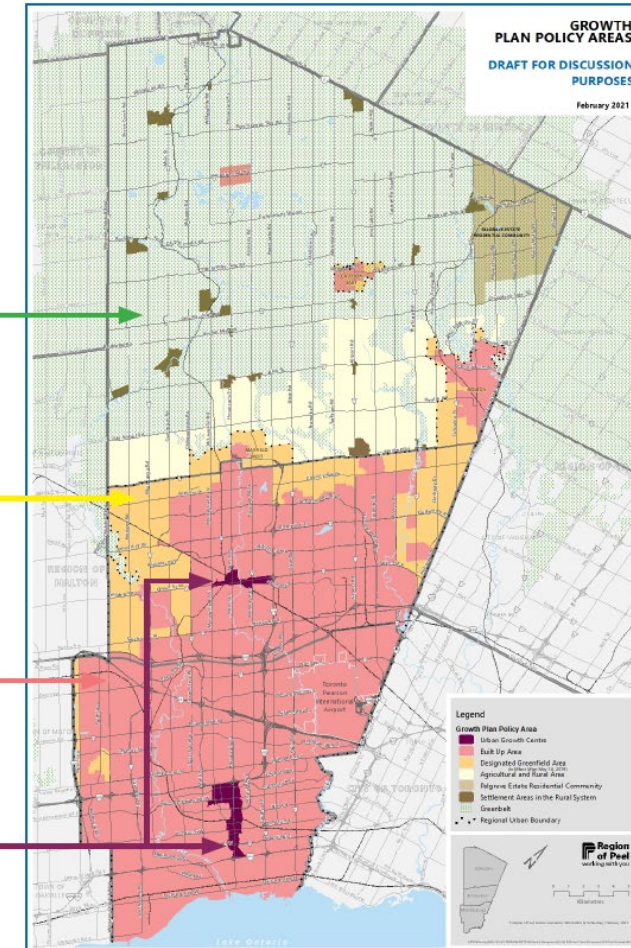
**Sources:** Growth Plan, 2019

**Greenbelt**  
Protected from major development

**Designated Greenfield Area**  
Lands to accommodate current and future growth at 65 ppj/ha\*

**Built-up Area**  
A minimum of 55% of Peel's growth is planned through intensification in the built-up area

**Urban Growth Centres**  
Planned to grow and achieve a density of 200 ppj/ha through high-density mixed-use development



\*Minimums being used in the Region's technical planning analysis and background work

# Process for Settlement Expansions

## 2006 Growth Plan

Municipal Comprehensive Review (MCR) undertaken by municipality (could be upper or lower tier) and required for Settlement Area Boundary Expansions (SABE)



If SABE study is conducted by lower tier – Regional Council approval required to amend boundary in ROP



Region sets population and job numbers, then locals identify land use locations

## 2019 Growth Plan

MCR undertaken by upper tier municipality in collaboration with local municipalities



SABE study is conducted and approved by the Region



Region sets population and job numbers and identifies the location of employment and community (residential/mixed use) land



# Settlement Expansion Implementation

## Regional Role

- Regional MCR
- Review local Official Plan Amendments (LOPA) for conformity to Regional Official Plan (ROP)
  - Approval authority of the local OPA is delegated by the Region to Local Council, provided the amendment conforms to the Regional Official Plan (see by-law 1-2000)

## Local Municipal Role

- Development application process to prepare, circulate, and adopt a LOPA / Secondary Plan / Community Plan
- Prepare zoning, subdivision, condo plans, site plans

### 2006 Growth Plan

Identifying the location of land uses to meet the growth allocation is a local role subject to Regional approval

### 2019 Growth Plan

Identifying the location of land uses to meet the growth allocation is a combination of roles:

- ROP locates high level employment and community lands
- LOP further identifies detailed land use designations through secondary plans, community plans, zoning



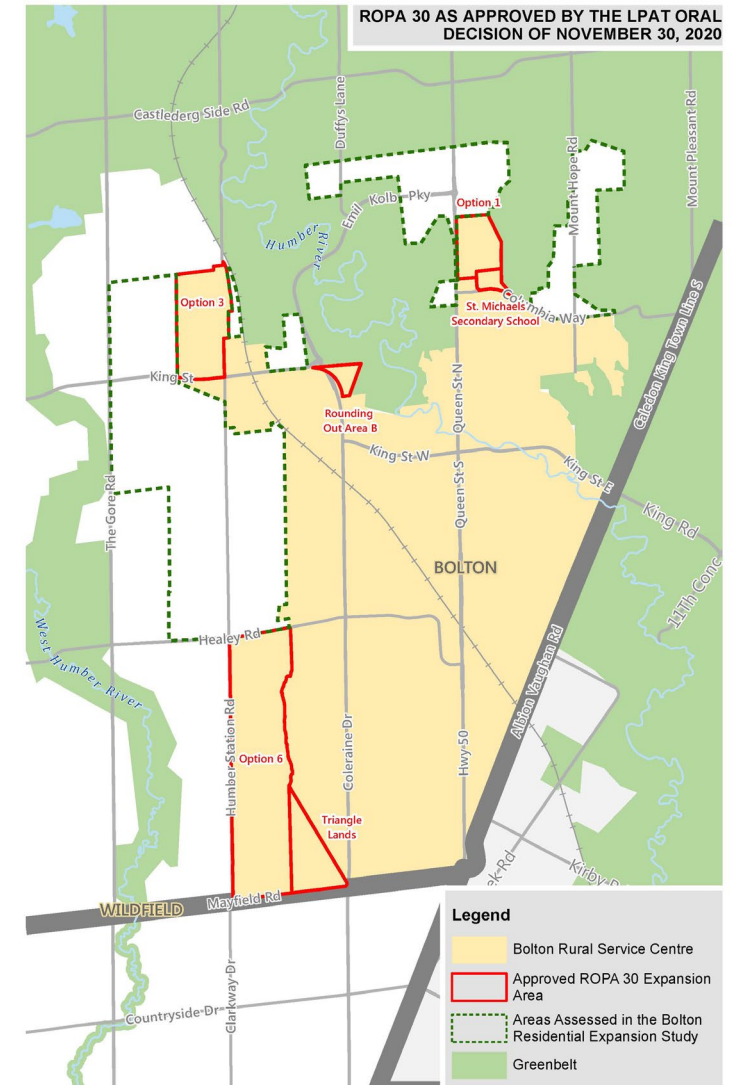
# Key ROPA 30 Implementation Policies

## ROP policy 5.4.3.2.9

- Must accommodate approximately 11,100 residents and 3,600 jobs
- Must plan for an appropriate mix of jobs, employment lands, local services, housing, including affordable housing, community infrastructure, and a full range of transportation options
- Ensure natural heritage features are identified and protected

## ROP policy 5.4.3.2.9.1:

- Prior to the Town adopting a LOPA and secondary plan, the Town must prepare a phasing plan which provides for the Region to approve phasing, staging, implementation, and financial plans and agreements prior to approval
- Specific requirements to address issues such as healthy development, affordable housing, natural heritage, agriculture and transportation



# Secondary Planning and LOPAs

## Secondary Plans

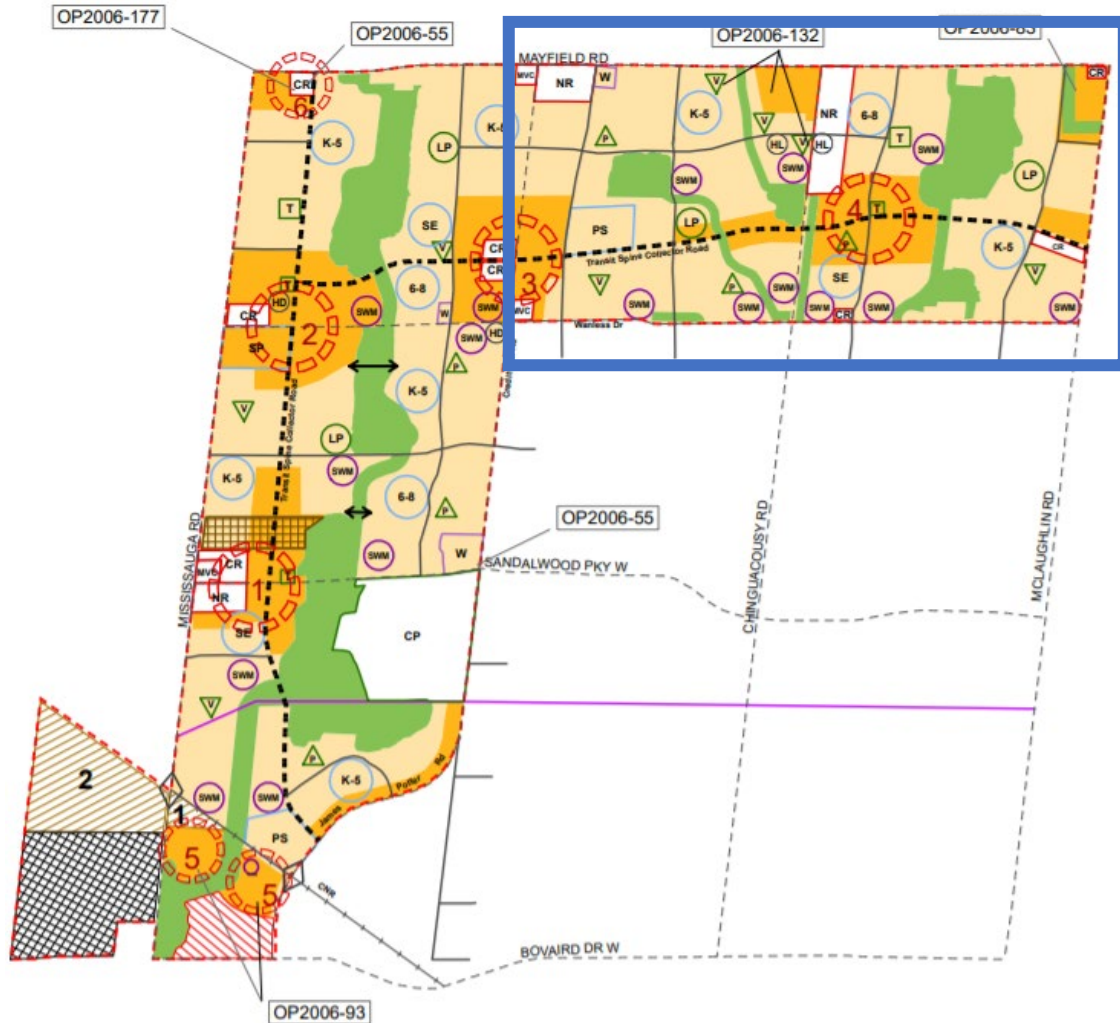
- Is a land use plan for a particular area
- It provides specific policies for areas where more detailed directions for land use designation, infrastructure, environment, transportation, and urban design are required beyond the general framework provided by the Official Plan.
- Forms a part of a local Official Plan and informs the next stages of development planning (subdivisions, site plans)

## When are they Required?

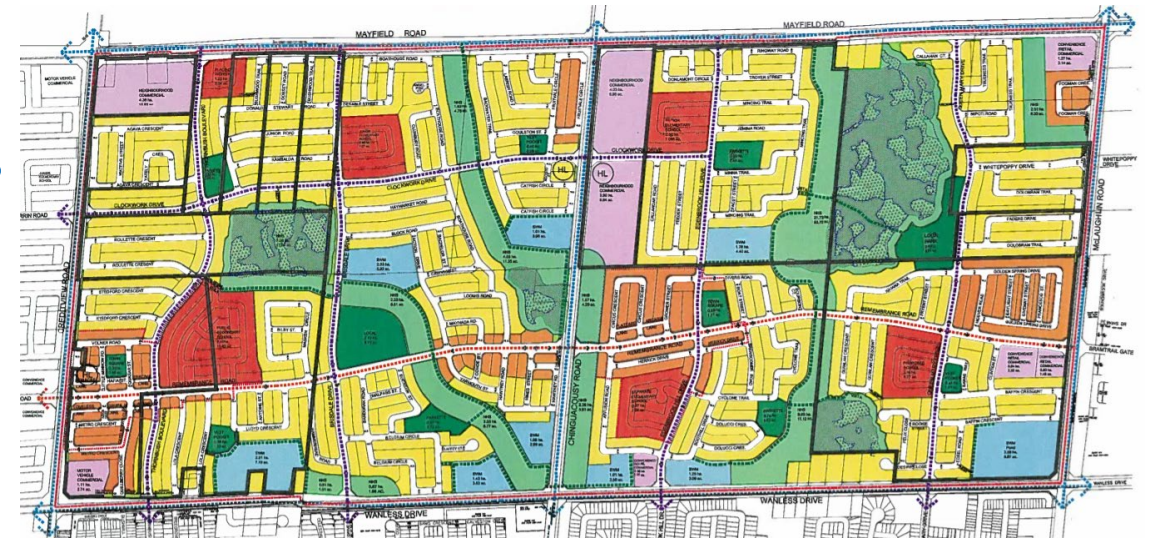
- It is standard practice and customary for secondary plans to be prepared for large areas of new developable land
- Additionally, the ROP directs the local municipalities to prepare secondary plans in specific areas
- Prepared when there is a new greenfield settlement expansion or change in land use vision

# Secondary Plan to Block Plan

Mount Pleasant Secondary Plan No. 51



Mount Pleasant Block Plan No. 51-2



+ Detail in land use, built form, environmental features, etc.

# Block Planning / Neighbourhood Planning

## What is a Block Plan?

Assist in coordination of:

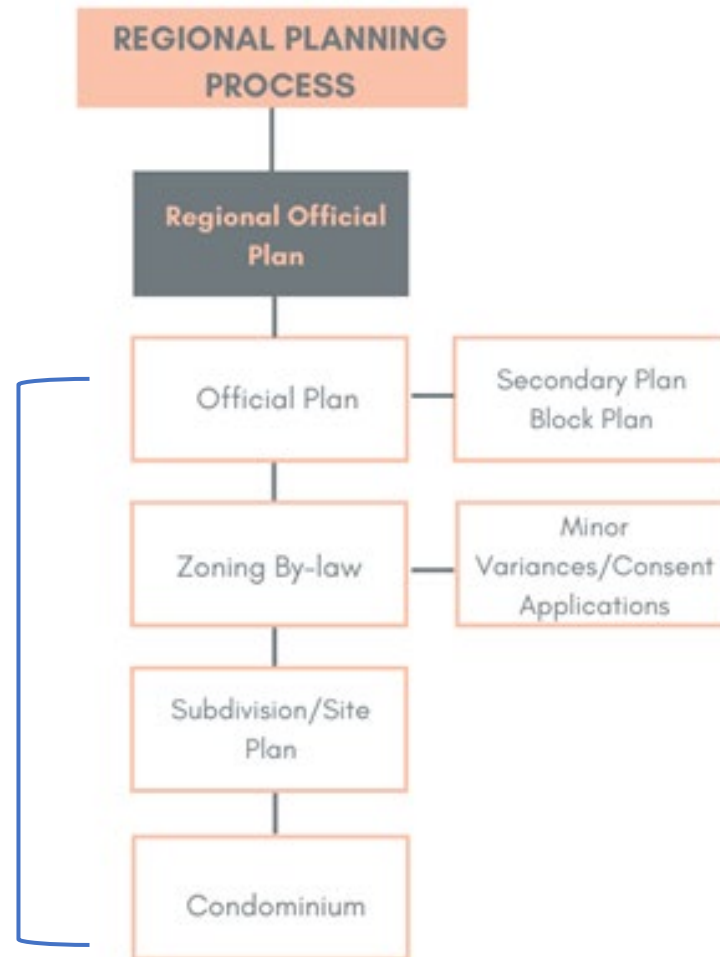
- Technical studies and approvals
- The delivery / funding of services and infrastructure;
- Allocation of development priority
- Layout of roads and the location and configuration
- Phasing and staging of infrastructure and development
- Water resource planning implementation
- Character, size and urban form of parks, institutional, commercial and industrial sites
- Layout/function of open space corridors, valleylands, woodlots and other natural features

# Planning & Development Application Process

Peel Leads;  
Province Approves



Peel takes a  
Commenting Role  
and Establishes  
Conditions; locals  
approve\*



\*The Region comments on *and approves* applications where approval authority is not delegated (e.g. New Official Plans)

# Peel2041+

## Regional Official Plan Review

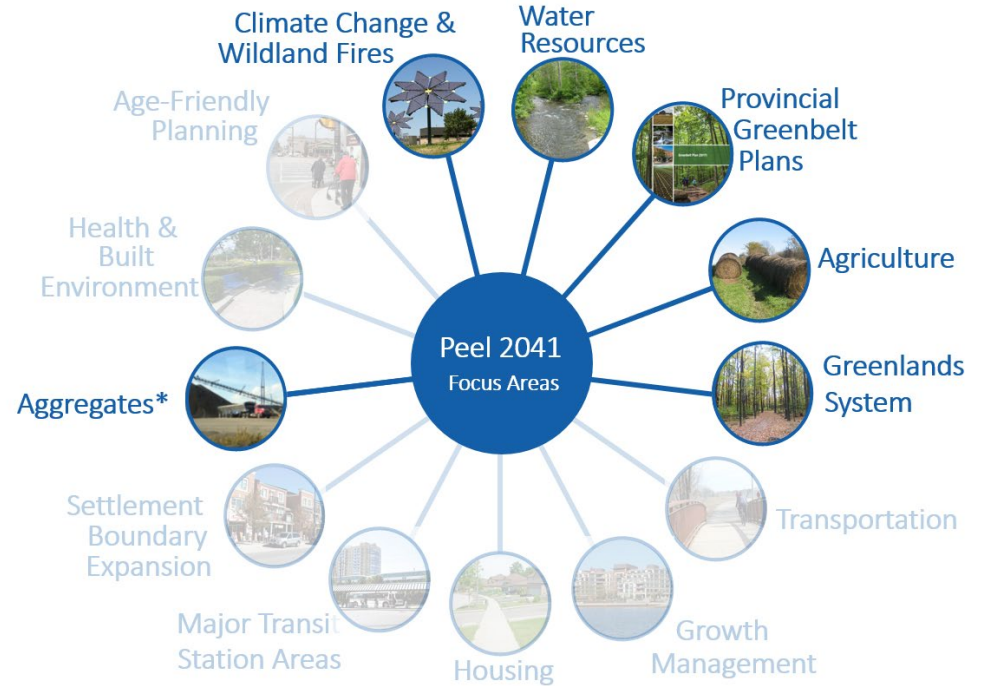
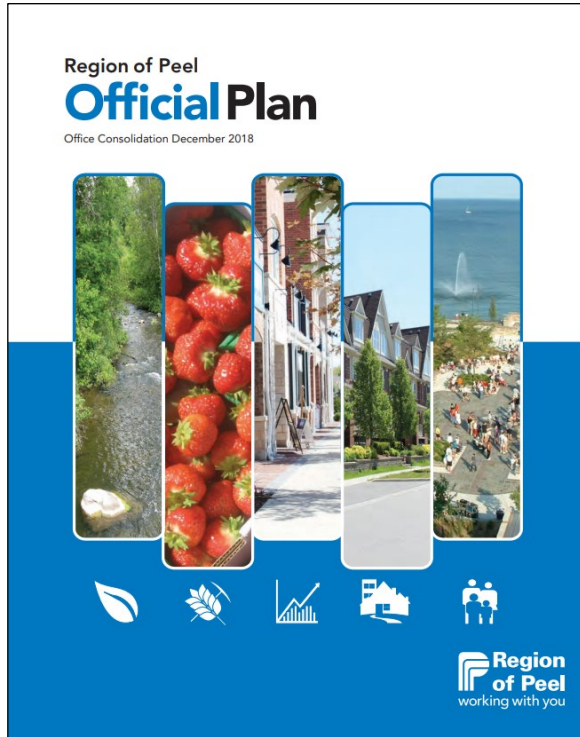
### Environment and Resources Focus Areas Overview

**Planning & Growth Management Committee**

**March 18, 2021**

Mark Head  
Regional Planning & Growth Management  
Region of Peel

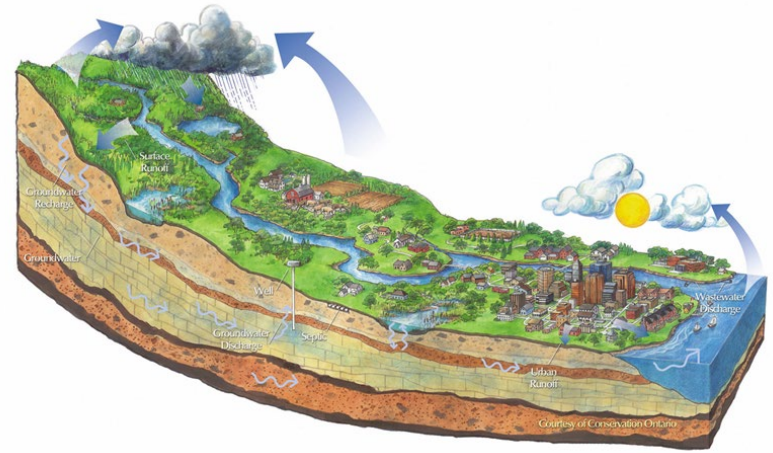
# Peel 2041+ Environment and Resources Focus Areas



\* Aggregates focus area proceeding separately as a staged policy review and ROPA.

# Key objectives and outcomes

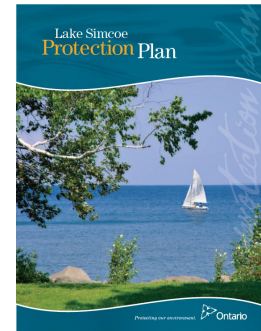
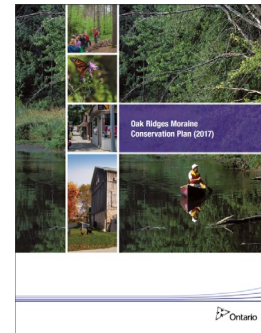
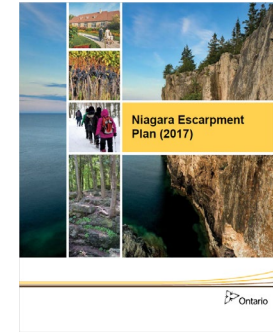
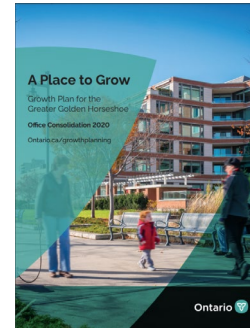
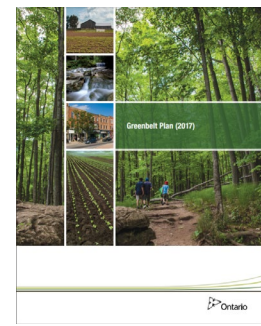
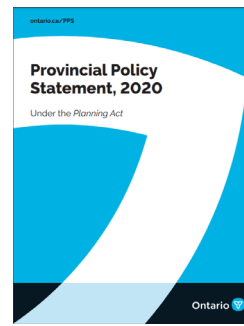
- Addresses climate change, reduces emissions and adapts the Region to a changing climate
- Provides direction for watershed, subwatershed and stormwater planning
- Protects drinking water sources, natural heritage systems and prime agricultural areas
- Adds policies supporting the agricultural sector, access to local food and urban agriculture
- Ensures a more resilient and sustainable Region





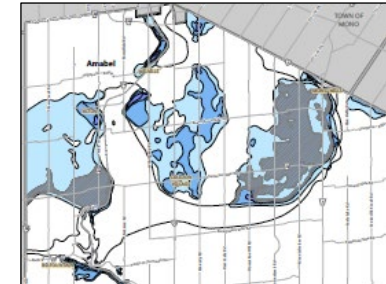
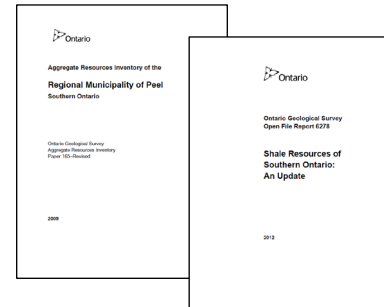
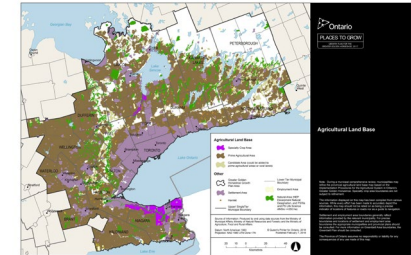
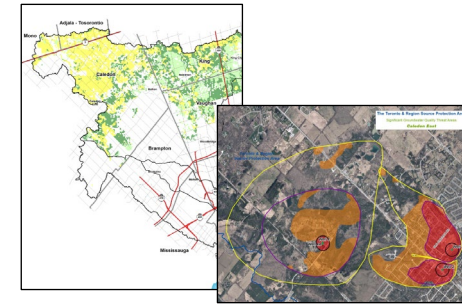
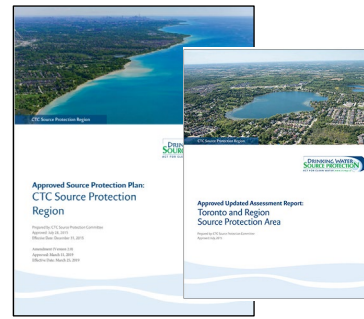
# Provincial policy is a key driver of policy revisions

- Addressing climate change is new requirement in all plans and policies
- New emphasis on integrated planning for growth, infrastructure, finance and environment
- New direction requires systems approach for policies and mapping:
  - Natural heritage
  - Water resources
  - Agriculture



# Provincial requirements are more directive with guidance and mapping

- New direction to identify a Water Resource System (WRS)
- Natural heritage systems to be identified and mapped in Regional Plan
- Agricultural mapping refinements based on procedures and Land Evaluation and Area Review (LEAR) studies
- New Greenbelt Plans mapping of natural heritage designations
- Mineral aggregate mapping refinements to reflect updated inventories



# Regional studies and discussion papers provide basis for consultation on recommended policies and mapping

- Greenlands System
  - CA Natural Heritage System Mapping Study
- Water Resource System
  - Roles and Responsibilities
  - Policy Options
  - Source Water Protection
- Agricultural and Rural System
  - Agricultural System Mapping Refinement
- Climate Change
  - Greenhouse Gas Emissions Inventory
- Greenbelt Plans



# Collaboration

- MMAH
- OMAFRA
- MECP
- MNRF
- ENDM/OGS

- BILD
- BILT
- DIWG
- PAAWG
- PFA
- GHFFA



- Water and Wastewater
- Public Health
- Transportation
- Climate Change

- Local Municipal Staff
- Planning TAC
- Various Focus Area Working Groups
- IMWG

- Indigenous Communities
- CVC
- TRCA
- HCA
- Source Protection Committees

- Planning & Growth Management Committee
- New Planning Advisory Committee

# Consultations

## Environment Related Focus Area Policies

March 2-5, 2020



Agriculture  
& Rural Areas



Climate Change



Wildland  
Fire Hazards



Provincial  
Greenbelt Plans



Water Resources

Including environment  
related SABE technical  
studies:

- Screening and Scoped Subwatershed Study
- Agricultural Impact Assessment
- Climate Change

## Growth Related Focus Area Policies & SABE Technical Studies

September 21 – October 1, 2020



Growth  
Management\*



Major Transit  
Station Areas



Housing



Transportation



Other:  
Waste Management,  
Cultural Heritage &  
Indigenous Engagement\*

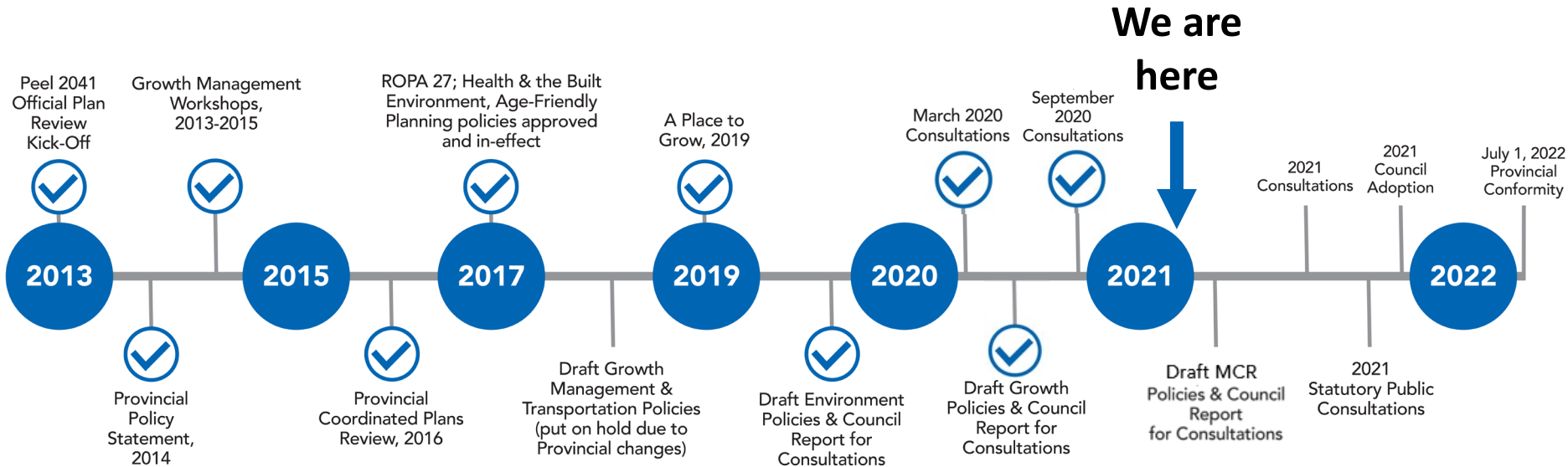


Greenlands System



Settlement Area  
Boundary  
Expansion\*

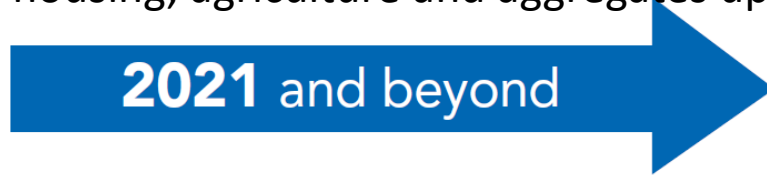
# Process & Timeline



Note: Timeline subject to change

# Next Steps

- **Outcome for today:** obtain feedback on background information and draft policy framework
- **Future meetings:** Continue to engage Regional Planning Growth Management Committee on Peel 2041+ (April – growth management, housing, agriculture and aggregates updates)



## Statutory Consultation

- Spring 2021** Complete remaining technical work and draft policies
- Summer 2021** Request Statutory Consultation on Draft MCR ROPA (policies and mapping)
- Summer 2021** Ongoing public engagement
- Fall 2021** Statutory consultation on all focus areas (Open Houses and Public Meeting)
- Winter 2021** Council adoption of Final MCR ROPA
- July 1, 2022** Provincial conformity required by this date



# Questions?

Contact info:  
Mark Head  
Regional Planning and Growth Management Division  
[mark.head@peelregion.ca](mailto:mark.head@peelregion.ca)





# Peel2041+

## Climate Change Policy Review

**Planning and Growth Management Committee, March 18, 2021**

Derek Lau

Regional Planning & Growth Management

Region of Peel



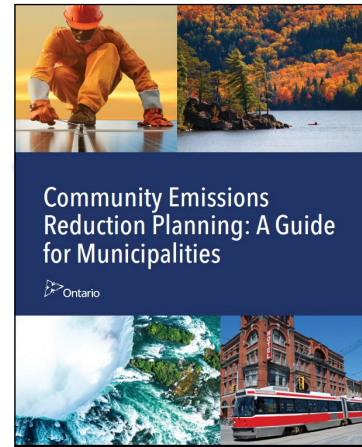
# Policy Context

## Provincial land use planning actions and policies



### Planning Act, 1990 (amended)

- Incorporation of climate change policies in official plans through Bill's 68 and 139



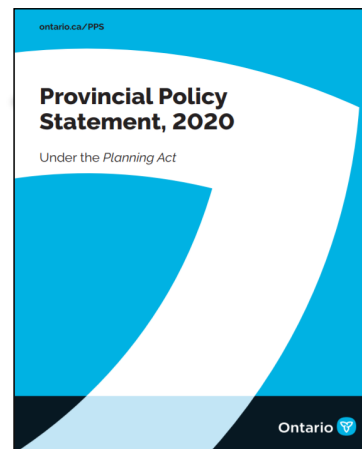
### Community Emissions Reduction Planning Guidance, 2018

- Support land-use planning direction related to the completion of energy and GHG emissions plans



### A Place to Grow, 2019

- Section 4.2.9 and section 4.2.10 regarding climate change



### Provincial Policy Statement, 2020

- Updated climate change language (originally from PPS, 2014) in specific theme areas



# Policy Context

## Climate Change in the Region of Peel

**Peel Climate Change Strategy**  
2006 Community Greenhouse Gas and Criteria Air Containment Inventory For The Geographic Region Of Peel  
February 2014  
Prepared by: SE 121 Grant Richmond

**Climate Trends and Future Projections in the Region of Peel**  
Technical Report  
February, 2016  
Prepared for:  
Prepared By: RSI

**CLIMATE CHANGE MASTER PLAN**  
LEAD INFLUENCE TRANSFORM  
2020-2030  
Region of Peel working with you

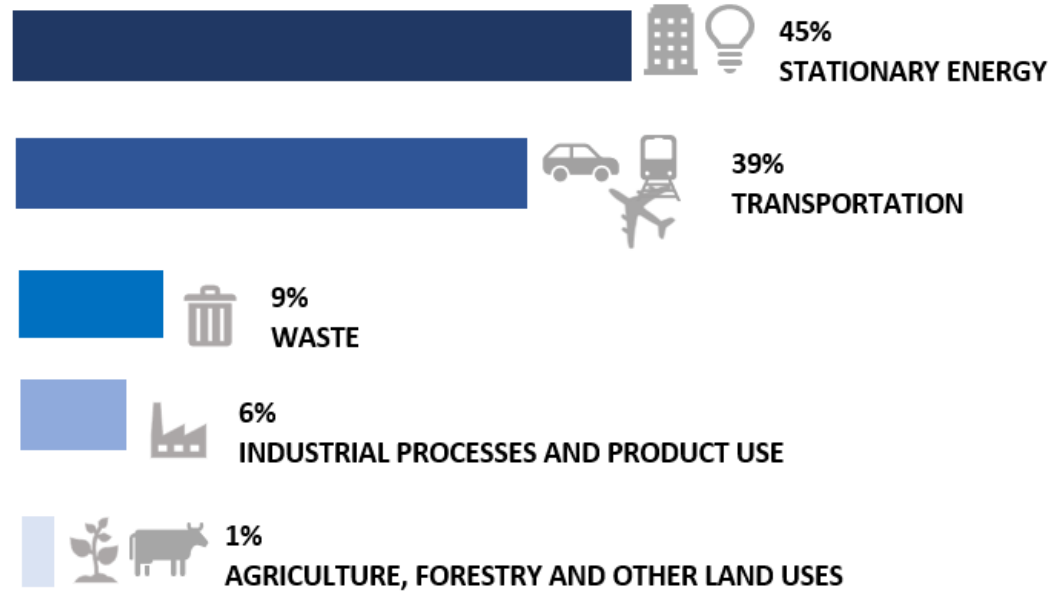




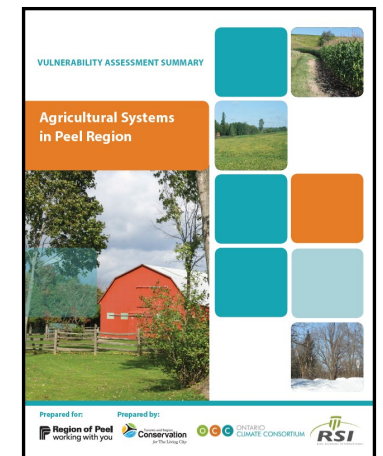
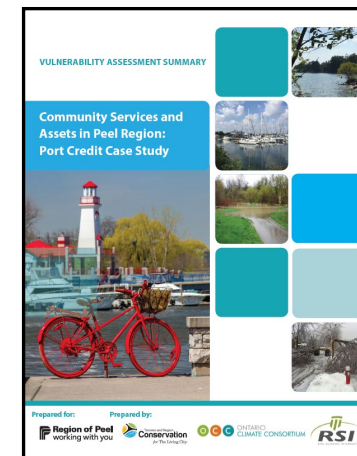
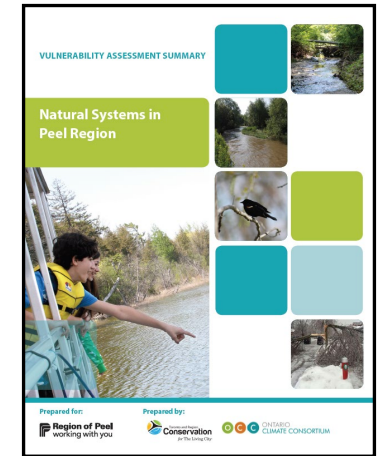
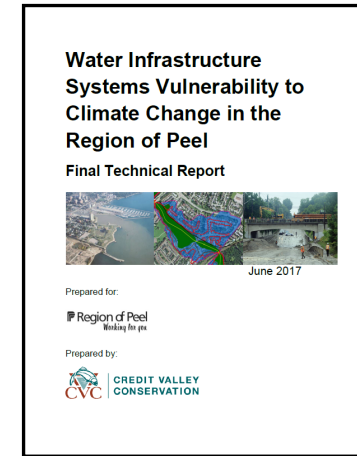
# Policy Context

## Climate Change in the Region of Peel

### 2016 Peel GHG Emissions by Sector



**TOTAL GREENHOUSE GAS EMISSIONS: 10.1 MILLION TONNES CO<sub>2</sub> EQUIVALENT**





# Climate Change

## Regional Official Plan Framework

Climate Change policies are being integrated throughout the Regional Official Plan in key theme areas:



**Climate Change**



**Growth Management**



**Transportation**



**Housing**



**Settlement Area  
Boundary Expansion**



**Greenlands System**



**Water Resources**



**Agriculture &  
Rural Systems**



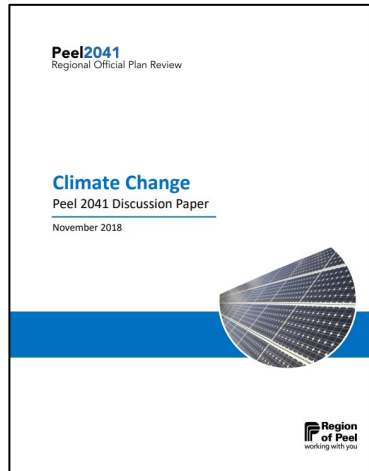
**Provincial  
Greenbelt Plans**



# Climate Change

## Regional Official Plan Framework

**New section added to Natural Environment Section to implement climate change planning**



### 2.2.3 Climate System

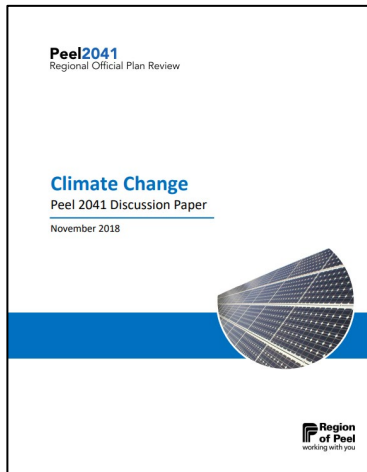
- Preamble introduction to climate change and how Regional and local land use planning can help address impacts
- Broad goals and objectives for climate change reflecting provincial policies
- Policy direction for GHG emissions reduction and adaptation planning, including direction requiring updated GHG inventories
- Policy direction to undertake infrastructure risk and vulnerability assessments
- Policy direction to support climate change planning through collaborative partnerships



# Climate Change

## Regional Official Plan Framework

**Updated policy direction for energy, including alternative and renewable energy systems**



### 3.6 Energy Resources

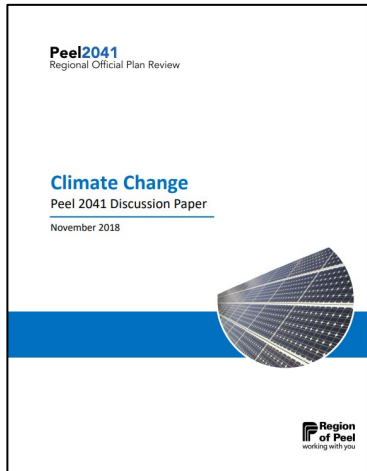
- Support community and regional energy planning
- Promote energy efficiency and conservation in communities
- Explore feasibility and implementation of district energy systems
- Support opportunities for renewable or alternative energy systems
- Promote hybrid and/or electrical vehicles and infrastructure



# Climate Change

## Regional Official Plan Framework

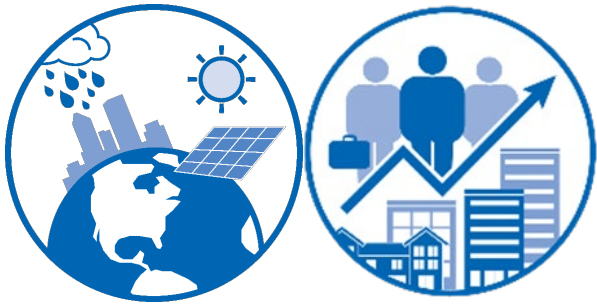
### Updated policy direction for green development standards



### 7.5 Sustainability

- Work collaboratively with local municipalities and stakeholders to develop and support the implementation of sustainable community design and building practices
- Work collaboratively with local municipalities to include policies in local official plans and to implement sustainable development requirement through the local land use planning process
- Encourage the local municipalities to include policies in their official plans that reduce the urban heat island effect, consider innovative practices and tools to mitigate greenhouse gas emissions and reduce vulnerability





# Climate Change + Growth Management

## Climate change criteria to evaluate Regional growth allocation, intensification and greenfield density targets in Peel

### **Climate Change Mitigation: Reduce Greenhouse Gas Emissions**

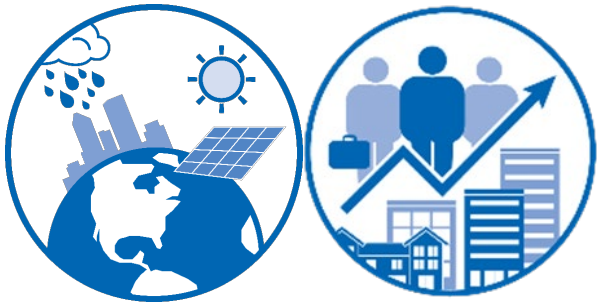
---

- Compact Built Form
- Sustainable Transportation System
- Renewable and Alternative Energy Systems
- Protection of Agricultural Land / Soils

### **Climate Change Adaptation: Build Resilient Communities**

---

- Compact Built Form / Protection of Natural Environment / Watershed Health
- Human Health and the Built Environment



# Climate Change + Growth Management

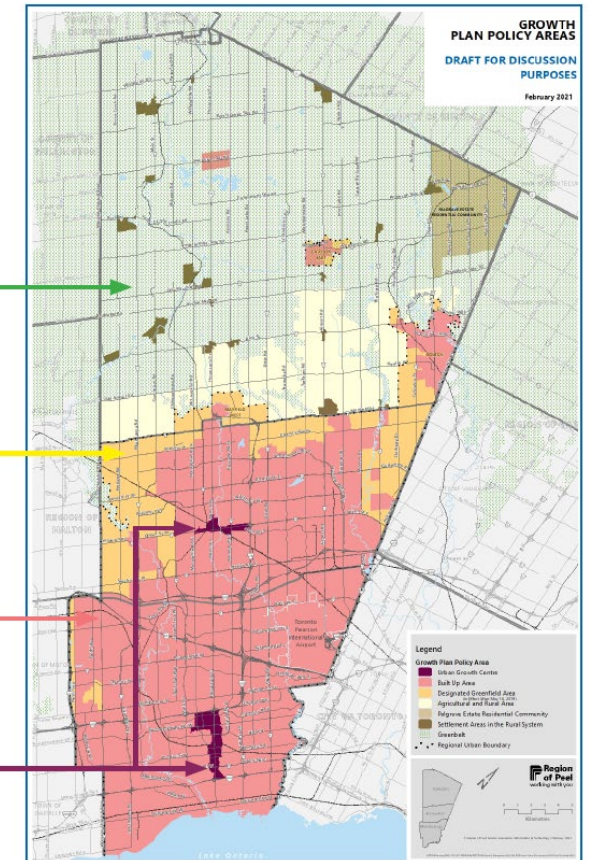
## Shift in densities, intensification, and unit mix supports climate change framework

- Identifying minimum intensification and density targets through detailed forecast work:
  - Built-up Area: **55% of growth**
  - Greenfield Area: **65 people and jobs/ha**
- Housing mix shift to more apartment units required (50% of future units)
- Directing growth to Strategic Growth Areas supports compact form, mixed uses, the provision of transit, cycling and walking which reduces GHG emissions

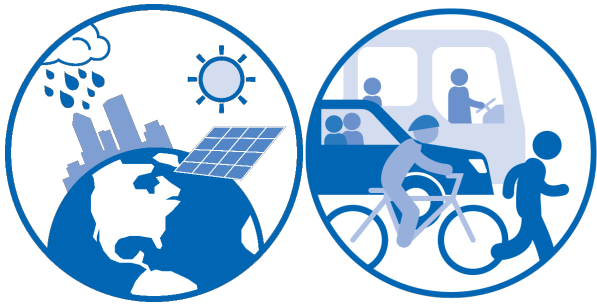
**Note:** The following is generalized mapping for discussion purposes. Specific policies and designations may be draft or under review/appeal. For all approved and in effect mapping, see the Regional Official Plan.

**Sources:** Growth Plan, 2019

- Greenbelt**  
Protected from major development
- Designated Greenfield Area**  
Lands to accommodate current and future growth at 65 ppj/ha\*
- Built-up Area**  
A minimum of 55% of Peel's growth is planned through intensification in the built-up area
- Urban Growth Centres**  
Planned to grow and achieve a density of 200 ppj/ha through high-density mixed-use development



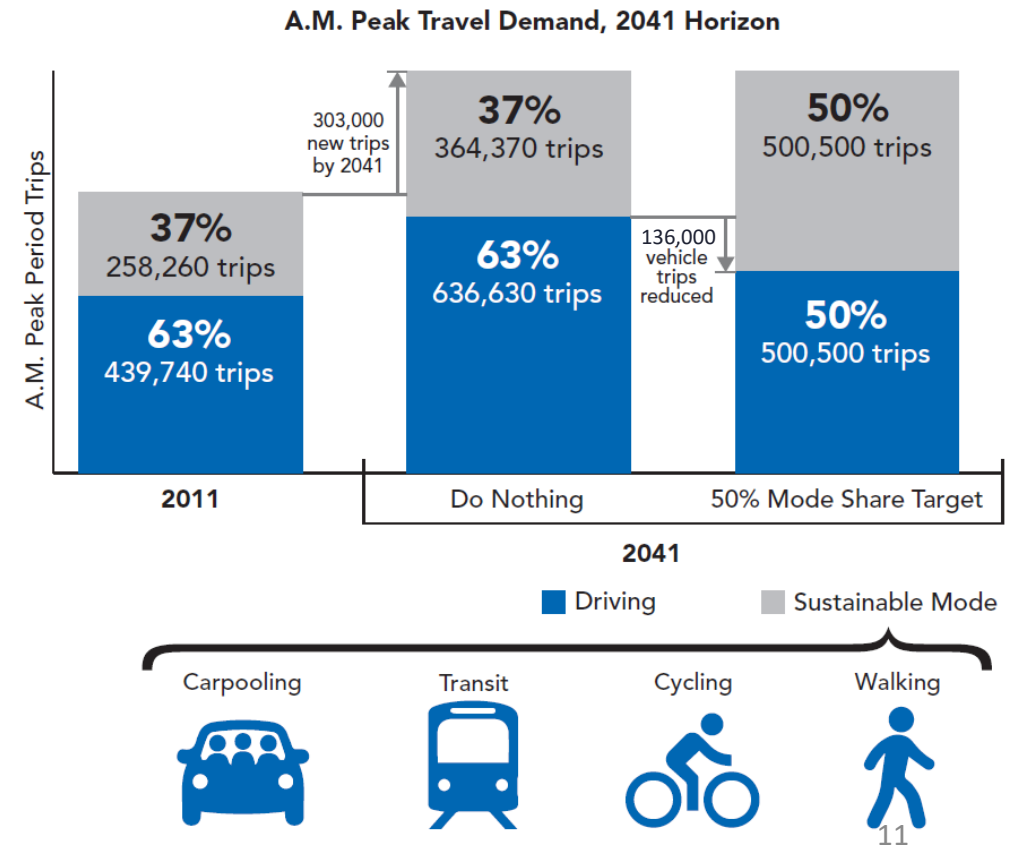
\*Minimums being used in the Region's technical planning analysis and background work

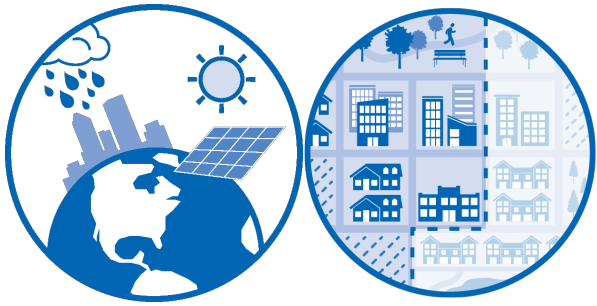


# Climate Change + Transportation

## Updated policy direction supports the 50% sustainable mode share target in the Region's Long Range Transportation Plan (2019)

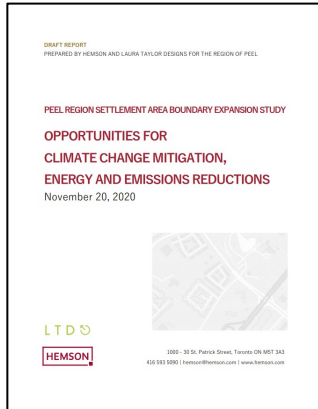
- Growth forecasts anticipate 45% increase in vehicle trips across Peel (303,000 new trips)
- Policies support an increase use of carpooling, transit, cycling and walking, with connections to designated nodes such as Major Transit Station Areas (MTSA)
- Single vehicle occupant trips are reduced by approximately 136,000 trips, helping reduce transportation-related GHG emissions





# Climate Change + Settlement Area Boundary Expansion (SABE)

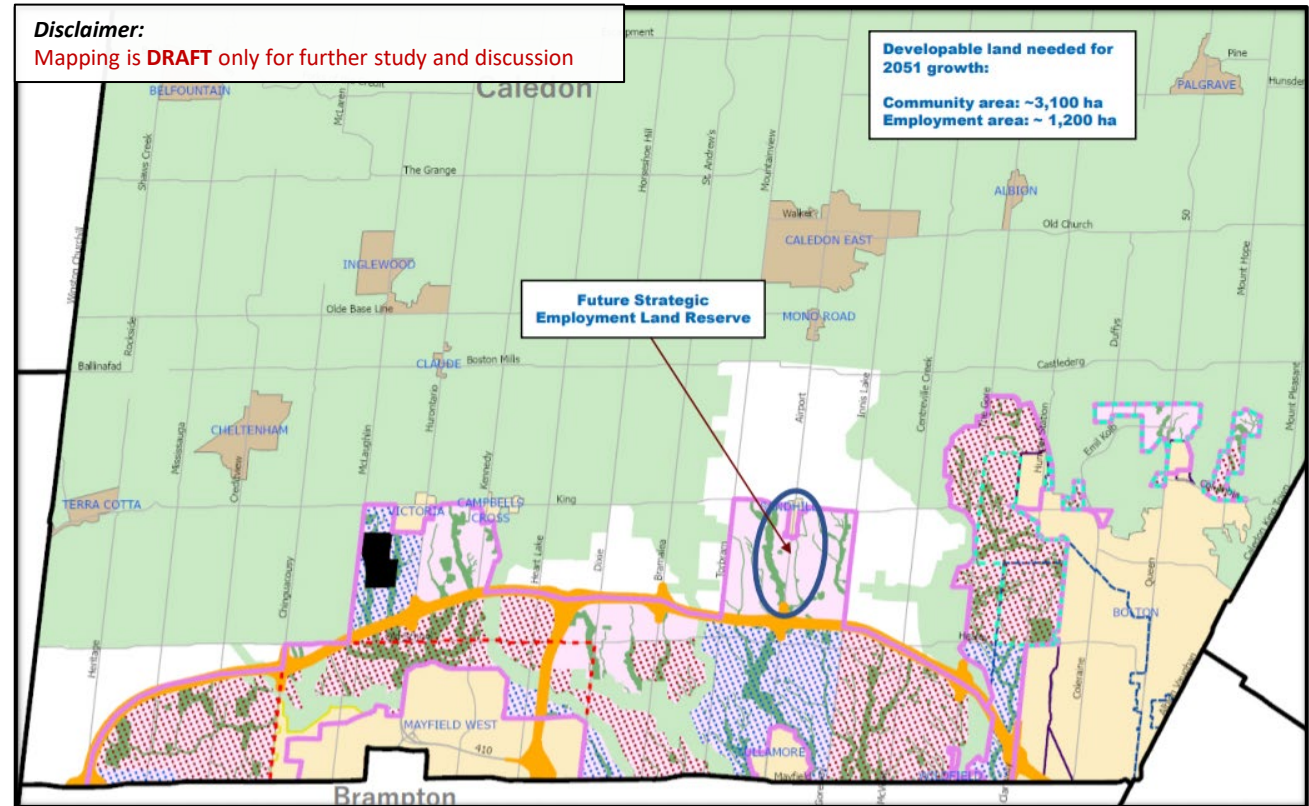
## Climate change component considerations as part of the SABE process



**Climate Change Mitigation, Energy and Emissions Reduction**



**Transportation, Health Assessment, Agricultural Impact Assessment, Environmental Screening and Scoped Subwatershed Study**





## Next Steps / Questions?

- Continue to work collaboratively with Regional staff, local municipal staff and other stakeholders to apply a climate lens and ensure consistency throughout the Regional Official Plan as other focus areas advance.
- Continued informal stakeholder engagement and consultation.
- Formal consultations, as required under the Planning Act, on the proposed policies.

Contact info:

Derek Lau

Regional Planning and Growth Management Division

[derek.lau@peelregion.ca](mailto:derek.lau@peelregion.ca)

# Peel2041+

Regional Official Plan Review  
and Municipal Comprehensive Review

## Water Resources Policy Review and Update

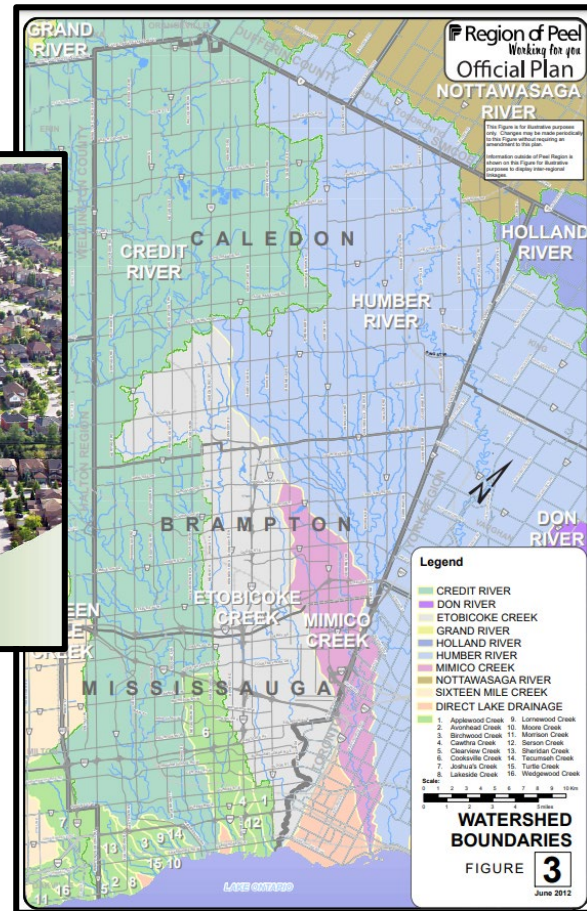
**Planning and Growth Management Committee, March 18, 2021**

Gail Anderson, MCIP RPP

Principal Planner

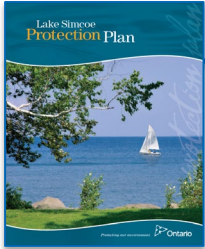


# Water Resources



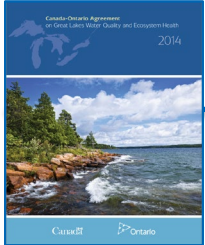


# Provincial Policy Drivers



## Lake Simcoe Protection Plan, 2012

- Improve water quality through infrastructure and land management best practices



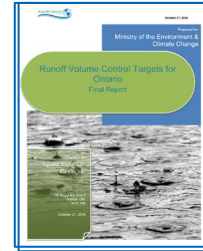
## Great Lakes Protection Act and Strategy, 2015

- Lake Ontario protection



## Source Water Protection Plans, 2015

- Protect sources of municipal drinking water



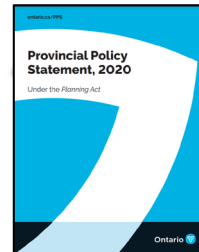
## Stormwater Management, 2016

- Low impact development guidance and stormwater control



## Growth Plan, 2019

- Identify a water resource system
- Undertake watershed scale planning



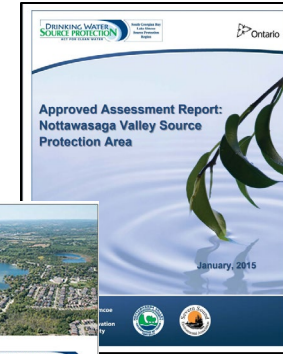
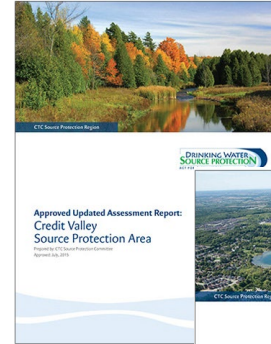
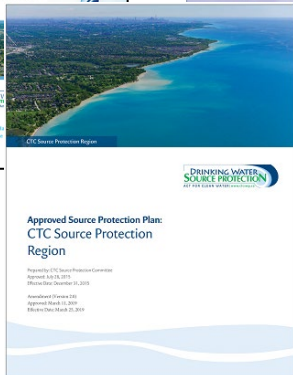
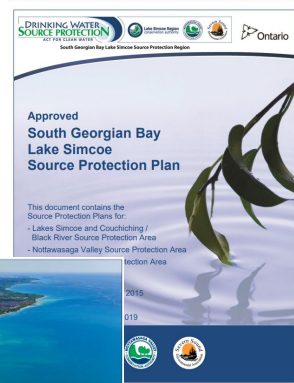
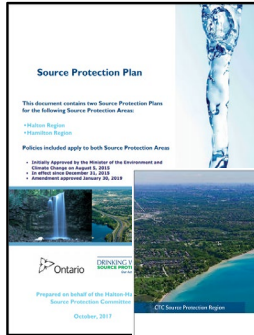
## Provincial Policy Statement, 2020

- Identify a water resource system
- Watershed Planning
- Promote green infrastructure
- Manage stormwater effectively





# Provincial Policy Drivers: Source Water Protection



Source Protection Plans establish policy direction, including land use policies. Municipalities are required to address these policies in Official Plans.




Assessment Reports provide the technical background and direction for developing the policies and mapping.



# Public and Stakeholder Engagement




**Peel2041**  
Regional Official Plan Review

**Protecting Water Resources:  
Roles and Responsibilities**  
Peel 2041 Discussion Paper  
November 2018





**Peel2041**  
Regional Official Plan Review

**Protecting Water Resources:  
Policy Options**  
Peel 2041 Discussion Paper  
November 2018



**Peel2041**  
Regional Official Plan Review

**Protecting Water Resources:  
Source Protection Plan  
Implementation**  
Peel 2041 Discussion Paper  
November 2019

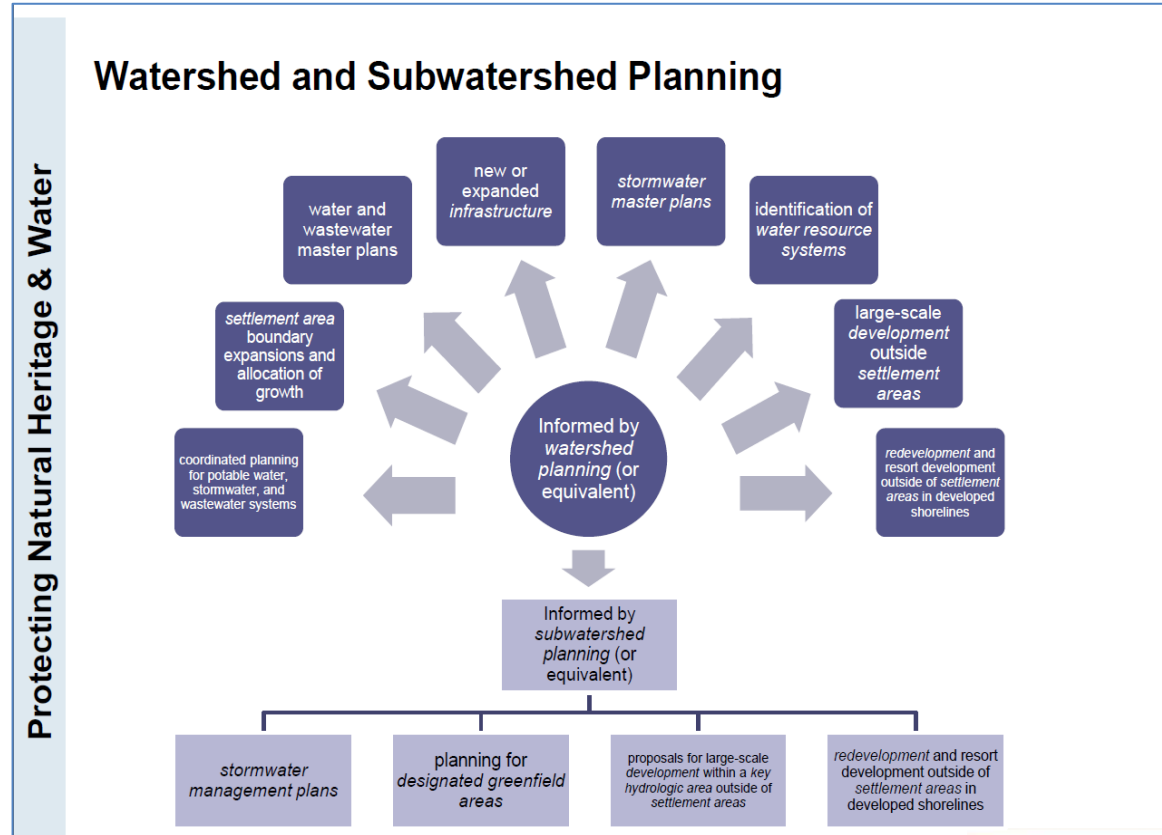




# Watershed Planning and Management

## Revised Official Plan s.2.2.5 Water Resources System and s.2.2.6 Watersheds

- Identify and protect a water resources system
- Support the preparation and implementation of watershed & subwatershed plans
- Protect water resources based on studies

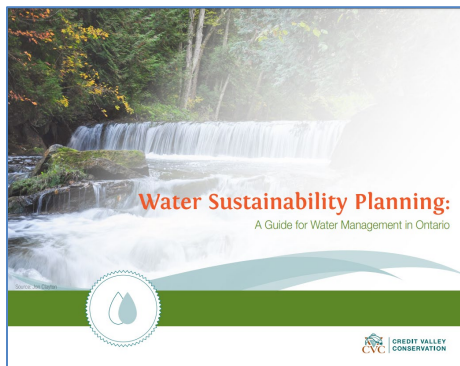
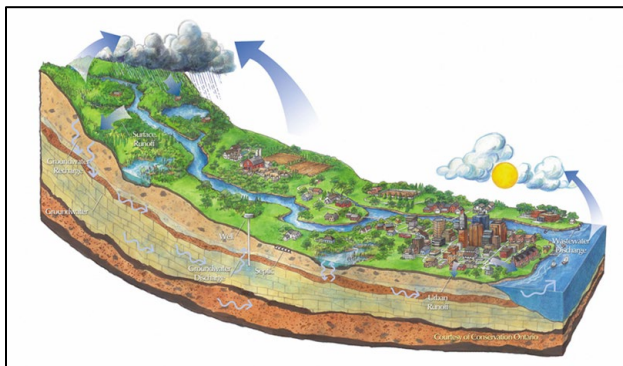




# Stormwater Management and Green Infrastructure

## New Official Plan s.2.2.7 Stormwater Management

- Watershed approach to manage stormwater
- Require stormwater master plans and management plans
- Provide guidance on the content of stormwater master plans
- Encourage the use of stormwater management best practices to maintain the natural hydrologic cycle, prevent increased flooding risk, replenish ground water resources and protect, improve or restore water quality



5.4-7





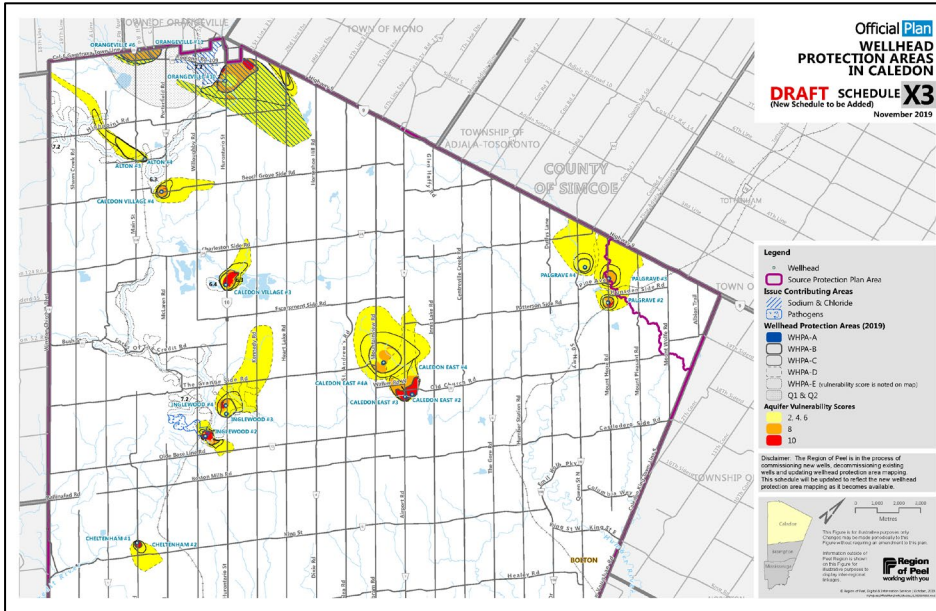
# Source Water Protection

## New Regional Official Plan s.2.2.8

- Identify vulnerable areas including
  - Wellhead protection areas
  - Highly vulnerable areas
  - Intake protection zones
  - Significant ground water recharge areas
  - Issue contributing areas
- Restrict incompatible land uses and significant drinking water threats.

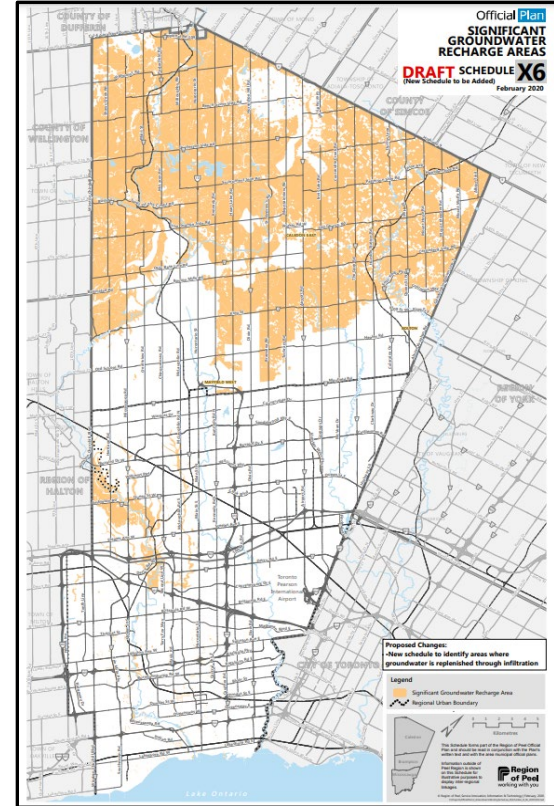
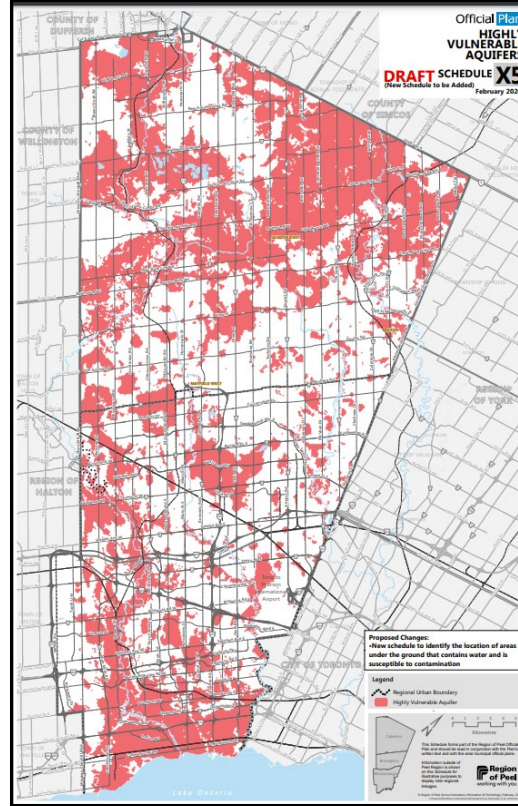
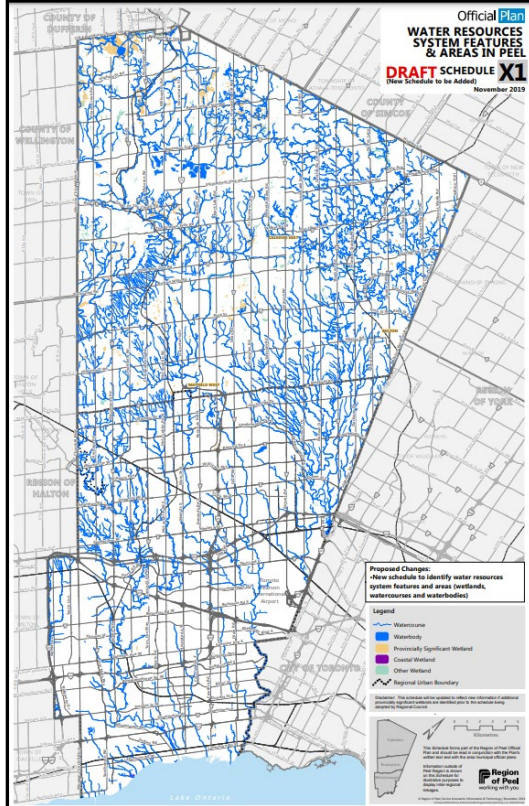


# Proposed Mapping – Wellhead Protection Areas and Intake Protection Zones





# Proposed Mapping – Water Resources System, Highly Vulnerable Aquifers and Significant Groundwater Recharge Areas





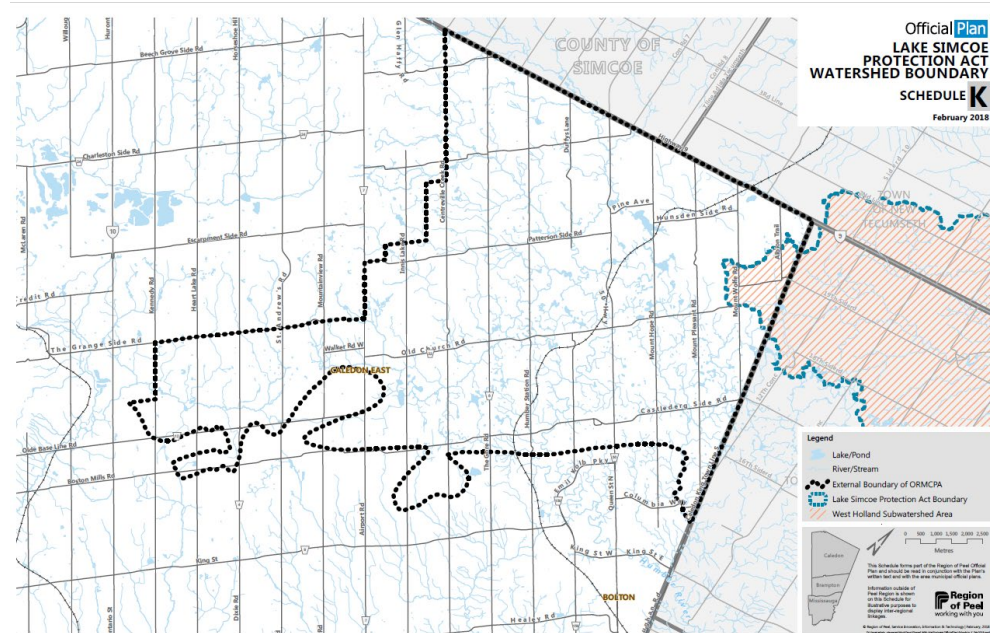
# Other Amendments

## Updated Lake Ontario Policies s.2.2.9

- Update the references to the strategies which protect the health of Lake Ontario

## New Lake Simcoe Policies s.2.2.10

- Reference the relevant policies from the Lake Simcoe Protection Plan.





# Next Steps/Questions?

---



- Minor revisions to the overall policies, with the objective of finalizing the draft policies by spring/summer 2021.
- Continued informal stakeholder engagement and consultation.
- Formal consultations, as required under the Planning Act, on the proposed policies.

Contact info:

Gail Anderson

Regional Planning and Growth Management Division

[gail.anderson@peelregion.ca](mailto:gail.anderson@peelregion.ca)



# Greenlands System

## Draft Policies and Mapping

Planning and Growth Management Committee

March 18, 2021

Learie Miller

Advisor Environmental Planning

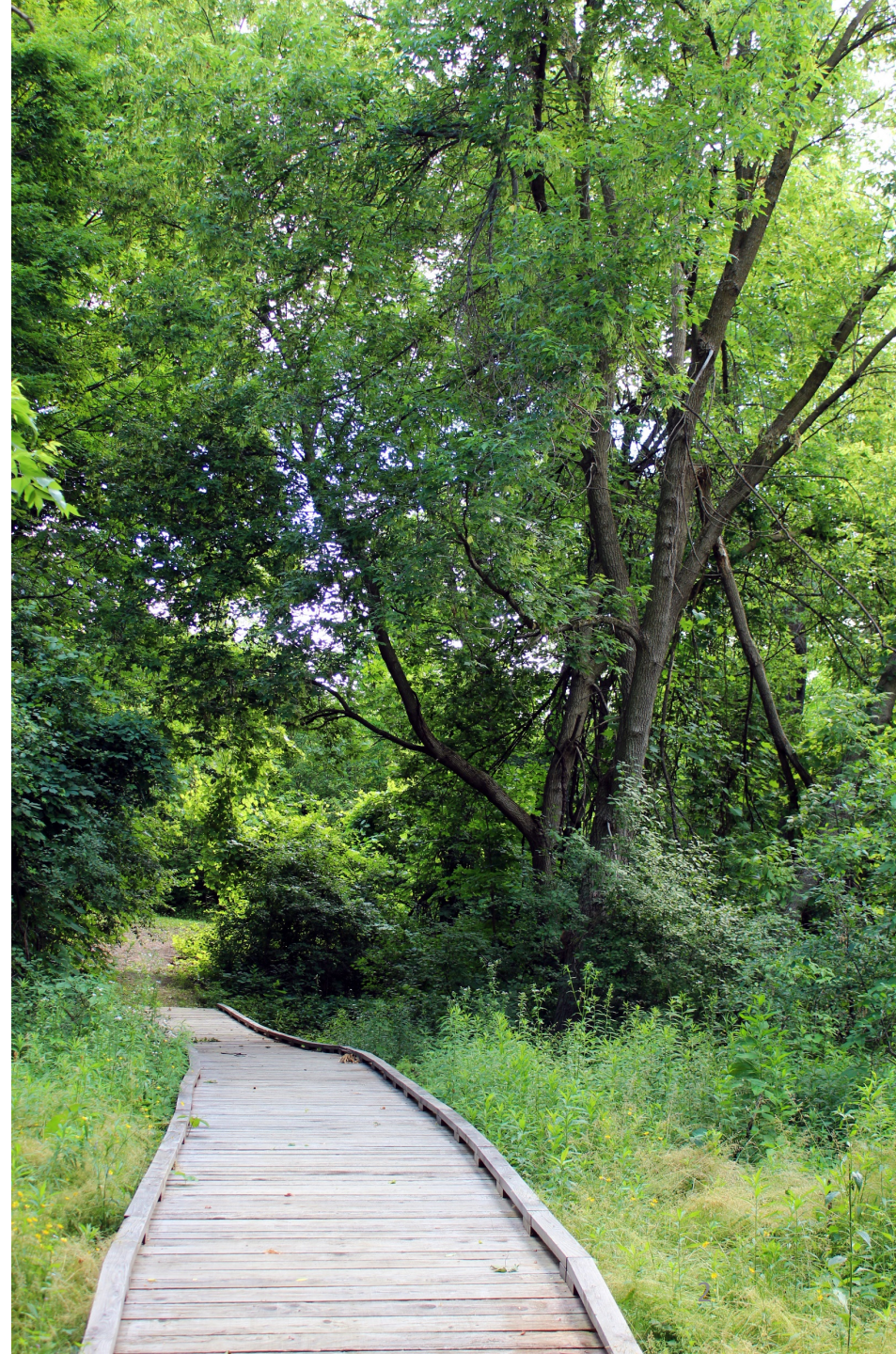
Regional Planning & Growth Management Division

Region of Peel



# Introduction

**Greenlands systems**, also referred to as natural heritage systems, are broadly defined as systems made up of natural heritage features and areas and linkages that provide connectivity between natural heritage features and areas for the movement of plants and animals.





# Policy Overview

- Ensure conformity with provincial policy
- Review Natural Heritage System (NHS) planning policies
- Transition from feature-based to system-based NHS
- Integrate recent local municipal and conservation authority NHS policies and studies
- Discussion paper, draft policies and mapping
- Mapping updates include:
  - Provincial Plan NHS System designations
  - Core Areas of the Greenlands System mapping layers

**Peel2041**

Regional Official Plan Review

## **Greenlands System**

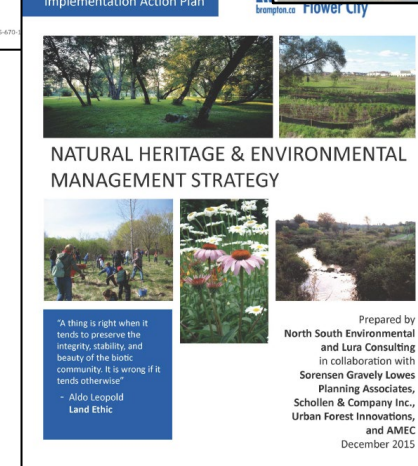
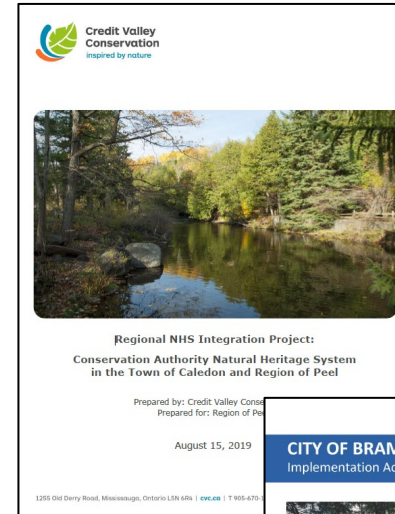
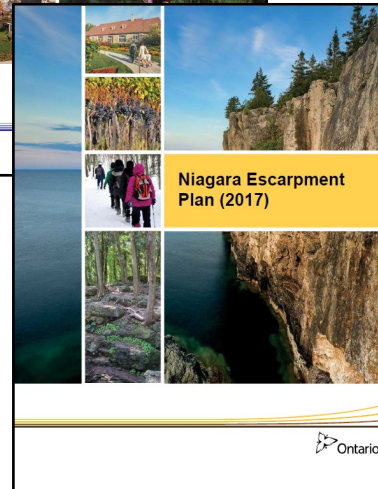
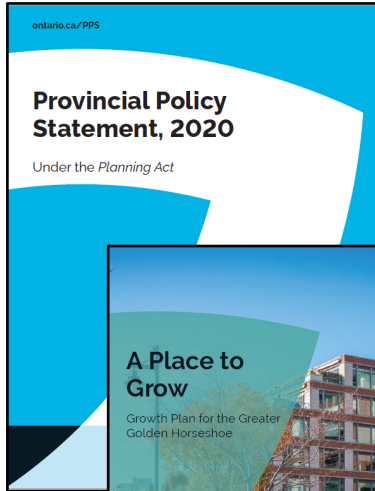
Peel 2041 Discussion Paper

May 2020





# Policy Context & Background Studies





# Consistency with Provincial Policies and Plans

## Provincial Policy Statement, Natural Heritage (2.1)

- Requires natural heritage systems to be identified, maintained, restored or, improved, recognizing linkages between and among natural heritage features and areas, surface water features and ground water features (2.1.2 and 2.1.3)

## Growth Plan Policies for Protecting What is Valuable (4.2)

- Requires identification and protection of the Natural Heritage System (NHS) for the Greater Golden Horseshoe outside settlement areas and Greenbelt areas as an overlay
- Municipalities are required to incorporate the Growth Plan NHS mapping and policies in their official plans and identify Urban River Valley designations



# Proposed Policies

## **Revised Official Plan s. 2.3.2.1 Regional Greenlands System Definition**

- Regional Official Plan policies build on the systems approach in provincial policies and plans
- Recognizes the significant landscapes and natural heritage system designations of the provincial plans as components
- Retains the Regional Greenlands System Core Areas, Natural Areas and Corridors (NAC) and Potential Natural Areas and Corridors (PNAC) policy framework

## **Revised Official Plan s. 2.3.2.3 Agricultural Uses**

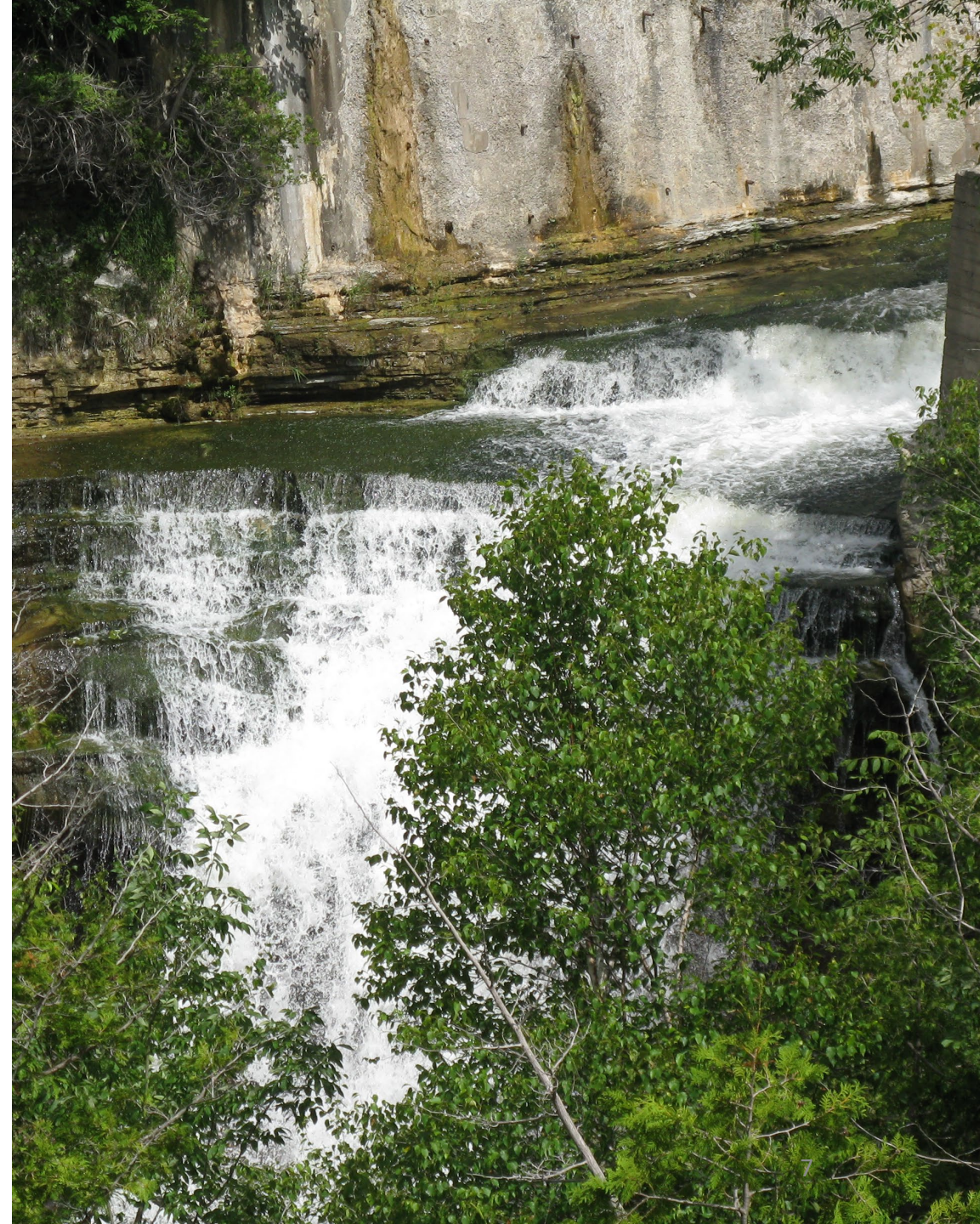
- The relationship and overlap between the Greenlands System and Agricultural System is updated to permit continuation of agricultural uses in accordance with normal farm practices



# Proposed Policies

## New s. 2.3.2.30 Greenlands System Protection, Restoration and Enhancement and 2.3.3 Urban Forest

- Requires identification of natural heritage systems in local official plans
- Requires identification and protection of enhancement areas and linkages among and between components of the Greenlands System
- Clarifies requirements for environmental impact studies on adjacent lands
- Policy section added to protect, maintain and enhance the urban forest.

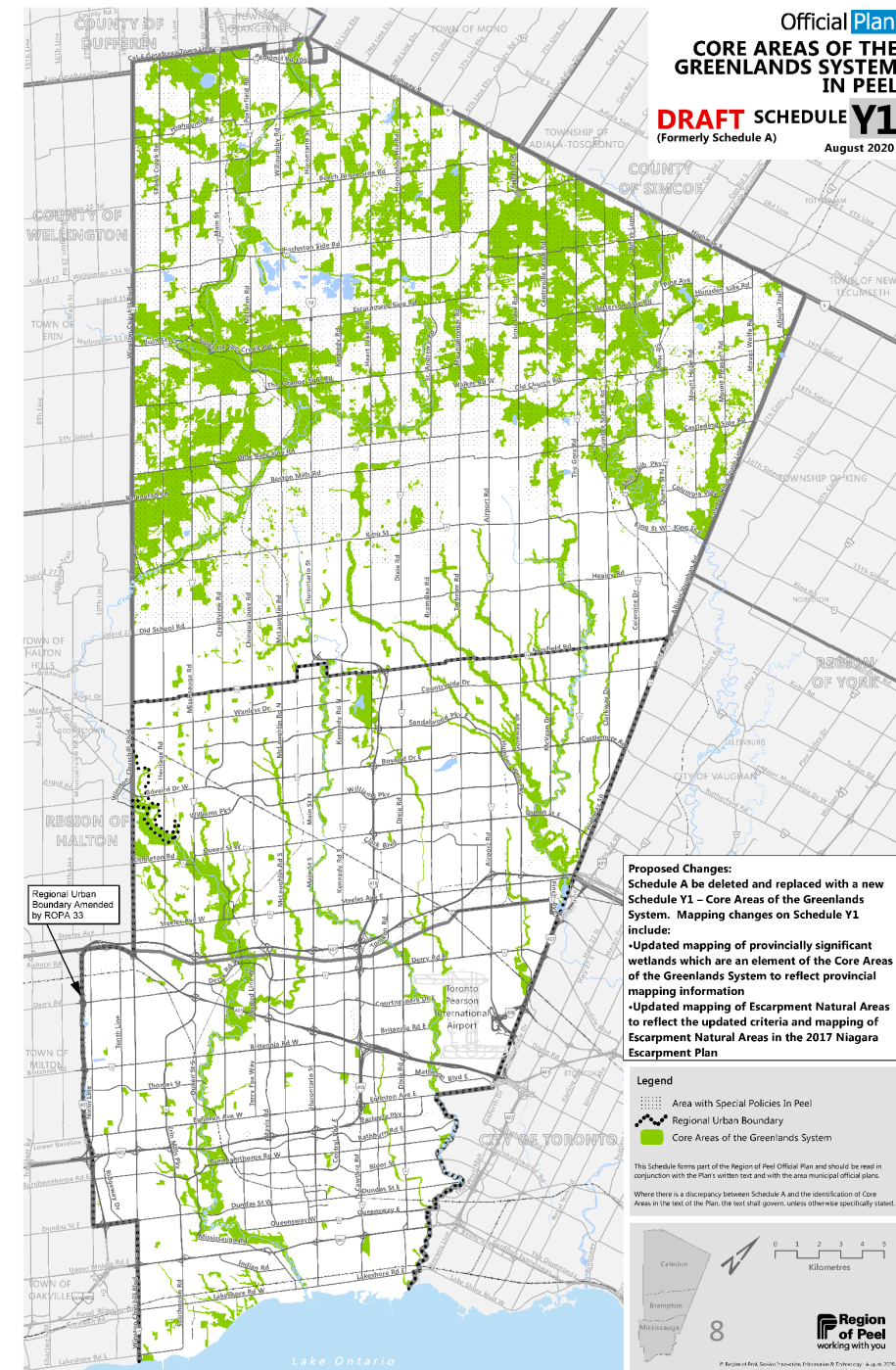






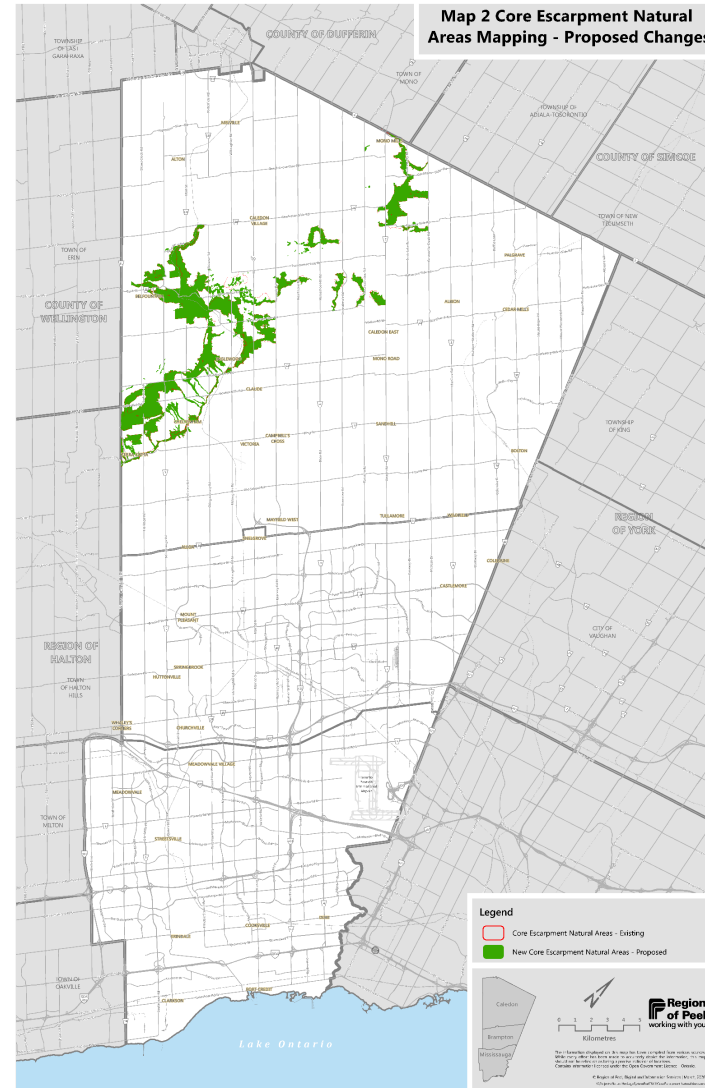
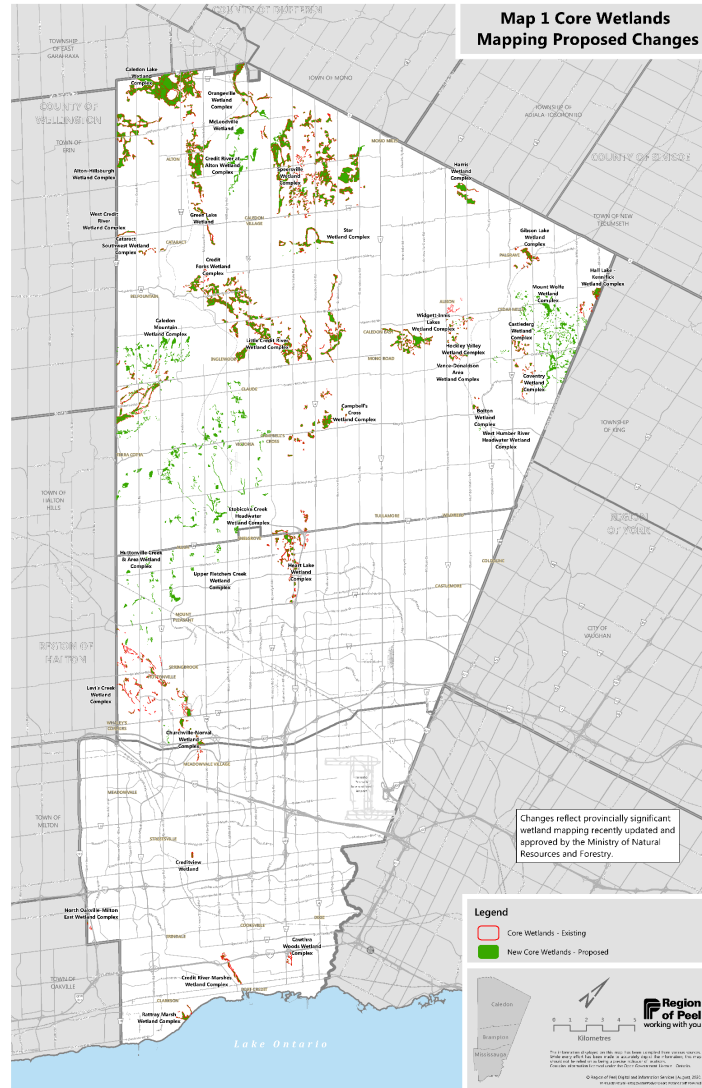
# Core Areas of the Greenlands System in Peel – Schedule Y1

- Represent provincially and regionally significant features and areas
- Criteria in Plan identify Core Areas:
  - Provincially significant wetlands
  - Woodlands
  - Valley and stream corridors (main branches, major tributaries and other tributaries)
  - ESAs and Provincial Life Areas of Natural and Scientific Interest
  - Escarpment Natural Areas





# Contributing Mapping Changes to Schedule Core Areas of the Greenlands System

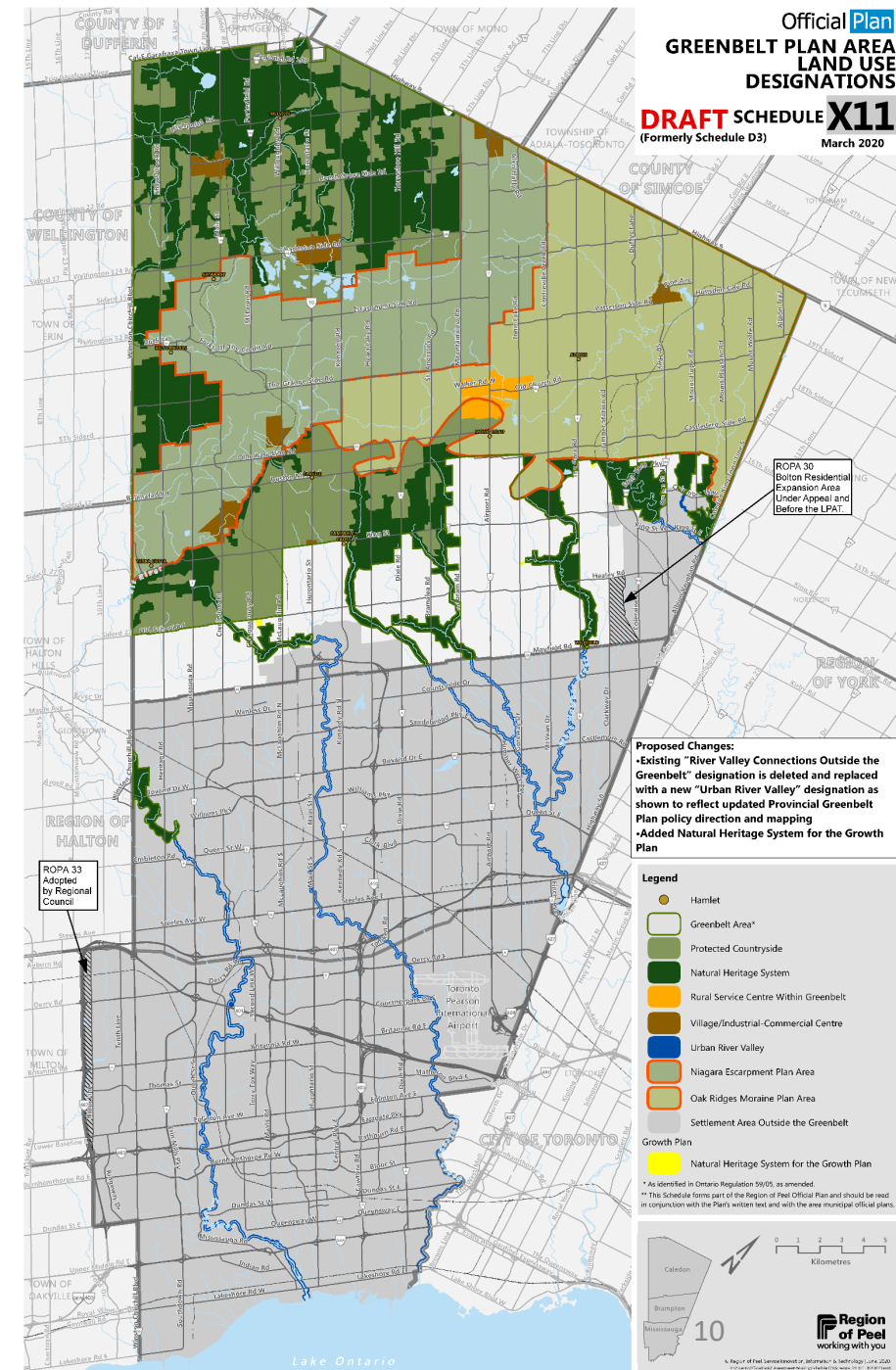




# Greenbelt Plan Area Land Use Designations – Schedule X11

## Schedule X11 amended by adding:

- Natural Heritage System (overlay) for the Growth Plan
- No negative impacts on key features
- Connectivity will be maintained or, where possible, enhanced
- Disturbed area requirements for aggregates resources uses and golf courses
- Natural heritage and hydrologic evaluations required on adjacent lands (within 120 m)
- Refinements to the Natural Heritage System only through a municipal comprehensive review



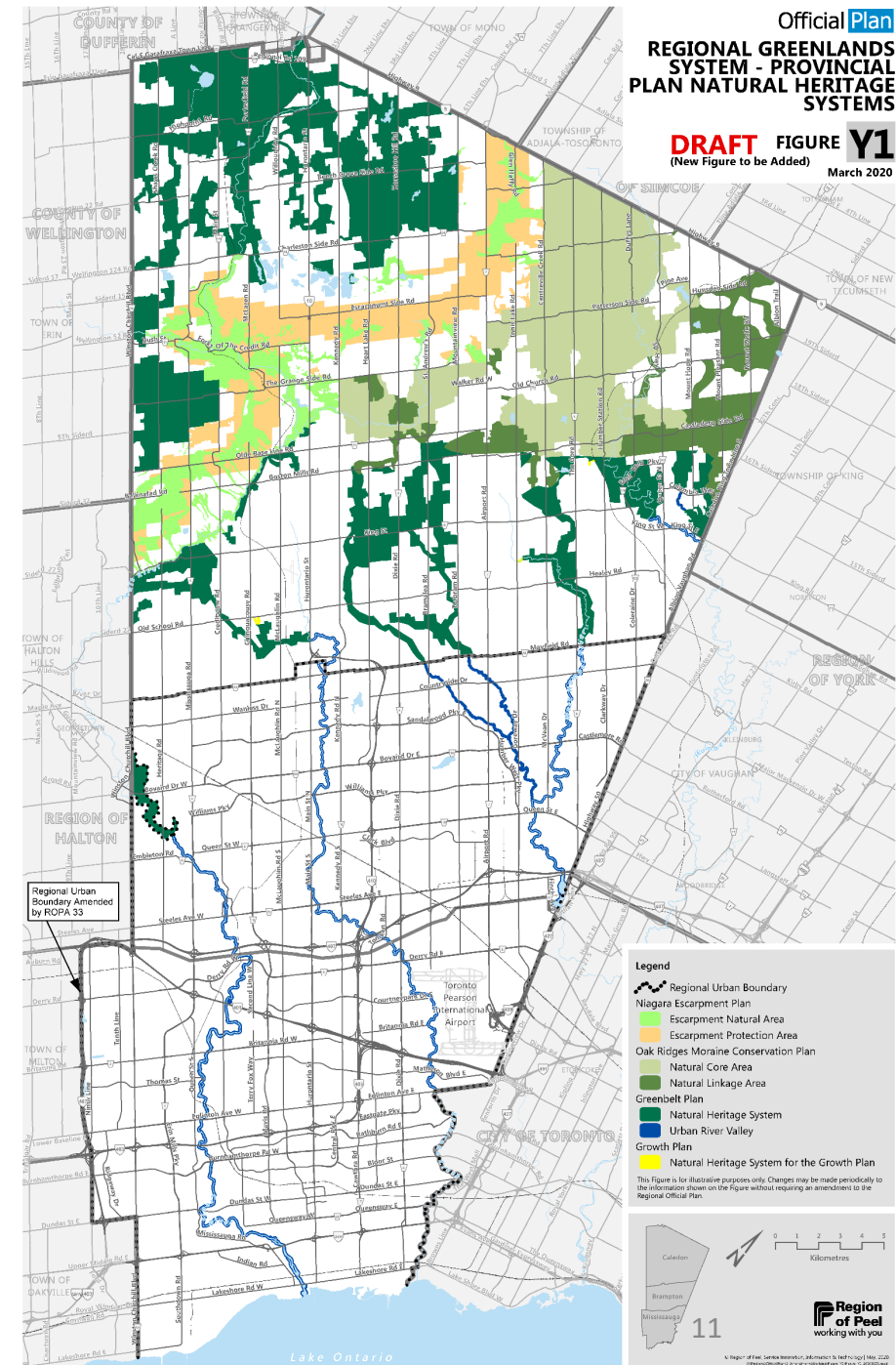


# Provincial Natural Heritage System – Figure Y1

Figure Y1 depicts the provincial plan natural heritage system overlays and designations applicable to Peel.

*“The significant landscapes and natural heritage system designations of the provincial plans are fundamental building blocks of the Greenlands System framework along with policies that provide for the protection of key natural heritage features, key hydrologic areas and key hydrologic features.”*

*Regional Official Plan, Section 2.3*





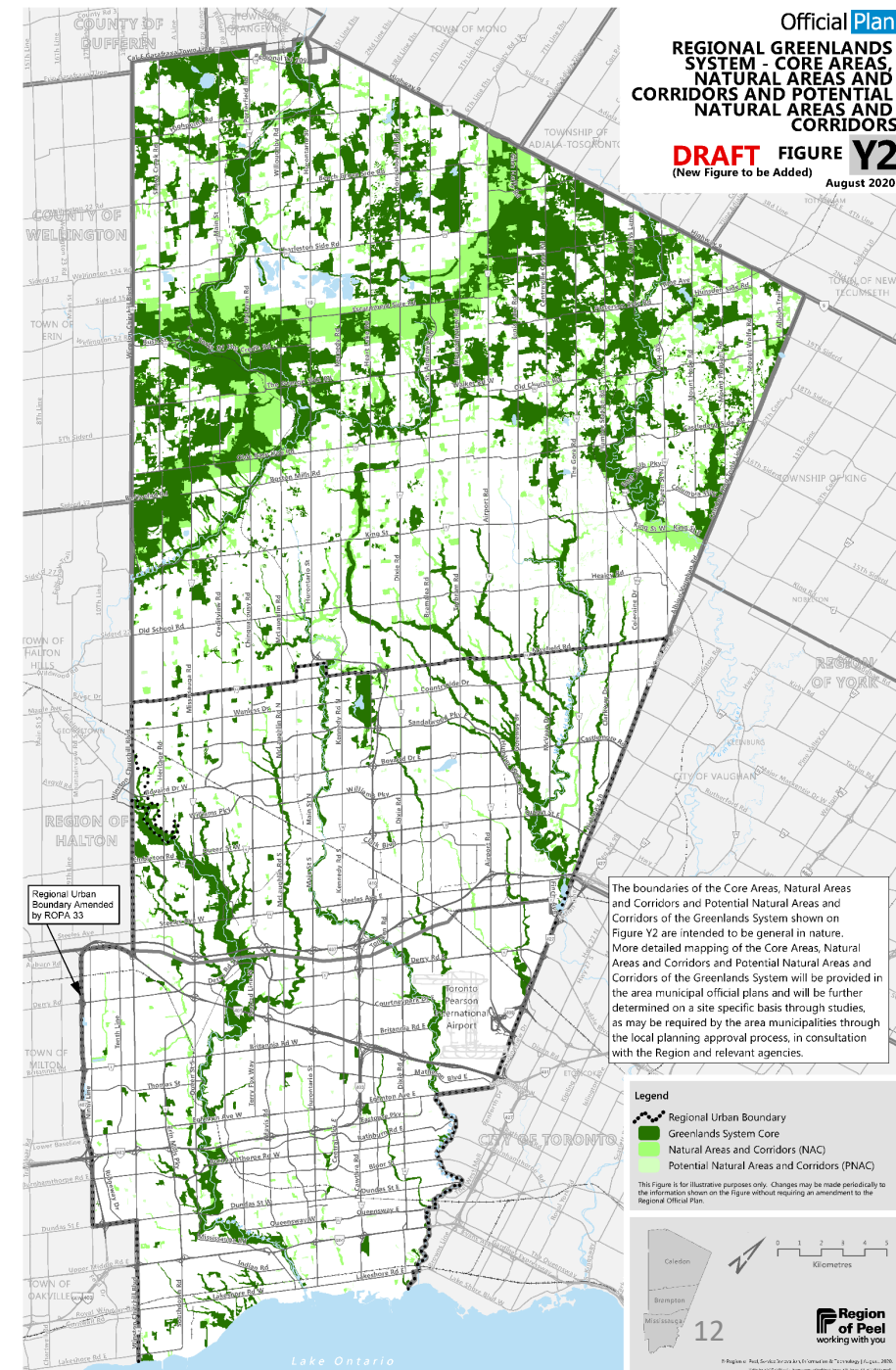
# Greenlands Core Areas, Natural Areas & Corridors, and Potential Natural Areas & Corridors – Figure Y2

- Greenlands System features and areas are further interpreted and identified in local municipal official plans
- Framework implements provincial policy direction for the protection, restoration and enhancement of **natural heritage features and areas** at a regional level

*“The policy framework provides for the Core, NAC and PNAC components of the Greenlands System to be combined, restored and enhanced to provide an integrated natural heritage system for the region.”*

Regional Official Plan, Section 2.3

5.5-12





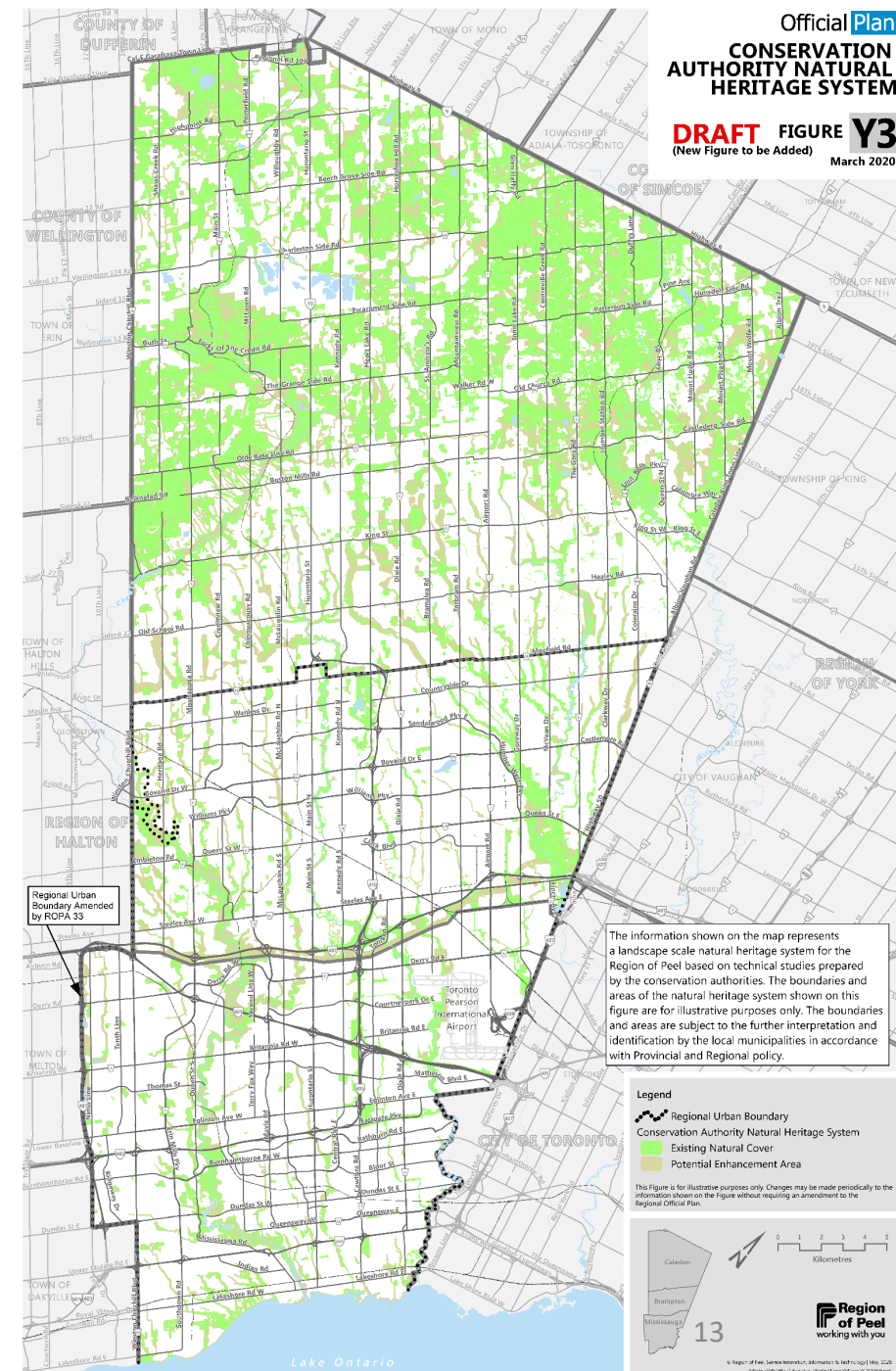
# Conservation Authority Natural Heritage System – Figure Y3

## The Conservation Authority NHS:

- At regional scale, identifies lands in existing natural cover and lands with potential to be restored or enhanced
- Identification requires further refinement and implementation at local level
- Provides a science-based foundation for the implementation of natural heritage system planning in Peel by the local municipalities

*“The Peel CA NHS is a landscape-level tool based on current science and is recommended for consideration and use by the Region and its partners for planning and programming purposes.”*

CVC, Regional NHS Integration Project, December 2019





# Questions?

Contact info:  
Learie Miller  
Regional Planning and Growth Management Division  
[Learie.Miller@peelregion.ca](mailto:Learie.Miller@peelregion.ca)