

Greenlands System



What are greenland systems?

Also referred to as natural heritage systems, greenland systems are defined as systems made up of natural heritage features and areas, and linkages that provide connectivity between natural heritage features and areas for the movement of plants and animals. Natural heritage features and areas include woodlands, wetlands, valley and stream corridors, wildlife habitat, habitat of endangered and threatened species, Areas of Natural and Scientific Interest, and Environmentally Significant or Sensitive Areas.

What is the Region doing?

- Reviewing the Greenlands System policies and updating Peel's natural heritage system policies in the Regional Official Plan to be consistent with Provincial policy direction
- Identifying a Regional Natural Heritage System and updating Greenlands System mapping
- Protecting, restoring and enhancing the Greenlands System through land use policies in collaboration with local municipalities and the conservation authorities

Why are greenland systems important?

- Protect, restore and enhance natural areas in Peel to support biodiversity and ecological integrity
- Provide ecosystem services that are life sustaining or improve quality of life, including a clean and reliable supply of ground water and surface water, moderation of air quality and recreation opportunities

Regional Official Plan policies will...

- Help the Region adapt to climate change
- Ensure that Peel's natural features and their functions will be preserved over time
- Update policy direction for Natural Heritage System planning
- Revise and update mapping of the Greenlands System
- Add or revise policies for Urban Forest planning, Greenlands System management and Invasive Species



How can I stay involved?

Follow [@regionofpeel](https://twitter.com/regionofpeel) twitter page or request notification at planpeel@peelregion.ca

Greenlands System

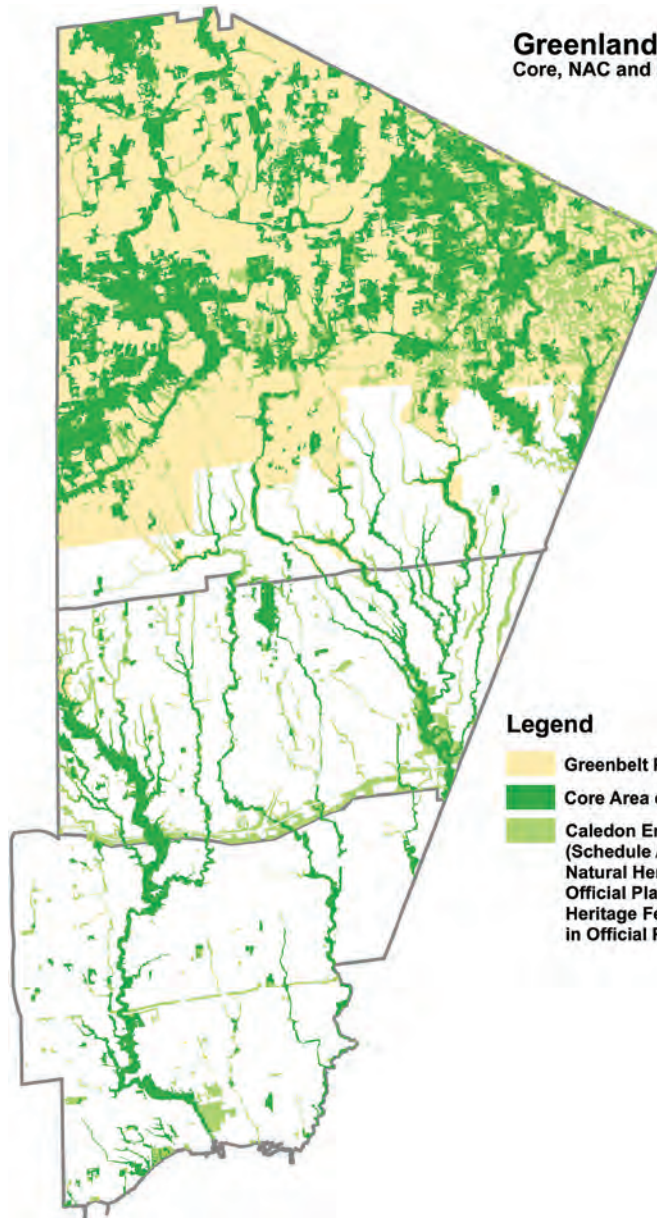


How are greenlands system policies formed?

The Region's Greenlands System policies and mapping implement policy direction outlined in the Provincial Policy Statement. The policies work in conjunction with the natural heritage system policies of the Greenbelt Plan, Oak Ridges Moraine Conservation Plan, Niagara Escarpment Plan and Growth Plan.

What are the components of the Greenlands System in the Region?

- Core Areas represent provincially and regionally significant features (e.g. woodlands, wetlands and valleylands) that are mapped in the Regional Official Plan.
- Natural Areas and Corridors (NACs) and Potential Natural Areas and Corridors (PNACs) are components of the Greenlands System that are further interpreted, identified and mapped in the local municipal official plans.
- The Conservation Authorities have updated mapping based on natural heritage science and landscape ecology which the Region is using to refine its Greenlands System mapping.
- Greenlands System components will be expanded to reflect the Natural Heritage System designations and mapping in the Provincial Greenbelt Plans and Growth Plan.



Greenlands System in Peel
Core, NAC and PNAC Features and Areas

Legend

- Greenbelt Plan Area
- Core Area of the Greenlands System
- Caledon Environmental Protection Areas (Schedule A in Official Plan), Mississauga Natural Heritage System (Schedule 3 in Official Plan) and Brampton Natural Heritage Features and Areas (Schedule D in Official Plan)



How can I stay involved?

Follow [@regionofpeel](#) twitter page or request notification at planpeel@peelregion.ca

peelregion.ca/officialplan/review/