

## Greenlands System



# Greenlands System

### Why are Greenlands Systems Important?

The Region of Peel recognizes the importance of protecting, restoring and enhancing natural areas in Peel to support biodiversity and ecological integrity. The Region's Greenlands System provides ecosystem services that are life sustaining and improve the quality of life for residents, including providing a clean and reliable supply of ground water and surface water, reducing stormwater run-off, moderating air quality and providing recreational opportunities.

### What are Greenlands Systems?

Greenlands systems, also referred to as natural heritage systems, are broadly defined as systems made up of natural heritage features and areas and linkages that provide connectivity between natural heritage features and areas for the movement of plants and animals.

### The Regional Greenlands System includes:

- **Core Areas** (e.g. Significant wetlands; regionally significant core woodlands and valley and stream corridors)
- **Natural Areas and Corridors** (e.g. Locally significant wetlands; locally significant woodlands, valleylands and stream corridors; fish habitat)
- **Potential Natural Areas and Corridors** (e.g. Unevaluated wetlands, linkage areas and potential enhancement areas)

The policies and mapping proposed in the next slides as part of the Greenlands Focus Area policy review will ensure that Peel's natural features and their functions will be preserved over time and will help the Region adapt to climate change.

*Image: Rural Land, Town of Caledon*

## Greenlands

### Overview

The Greenlands System Policy Review will be updating the natural heritage system planning policies in the Regional Official Plan so that the Greenlands System policy framework is consistent and conforms with provincial policy and plans.

The proposed policies provide a transition from a features-based approach to a more systems-based approach for natural heritage so that natural heritage features are linked and enhanced.

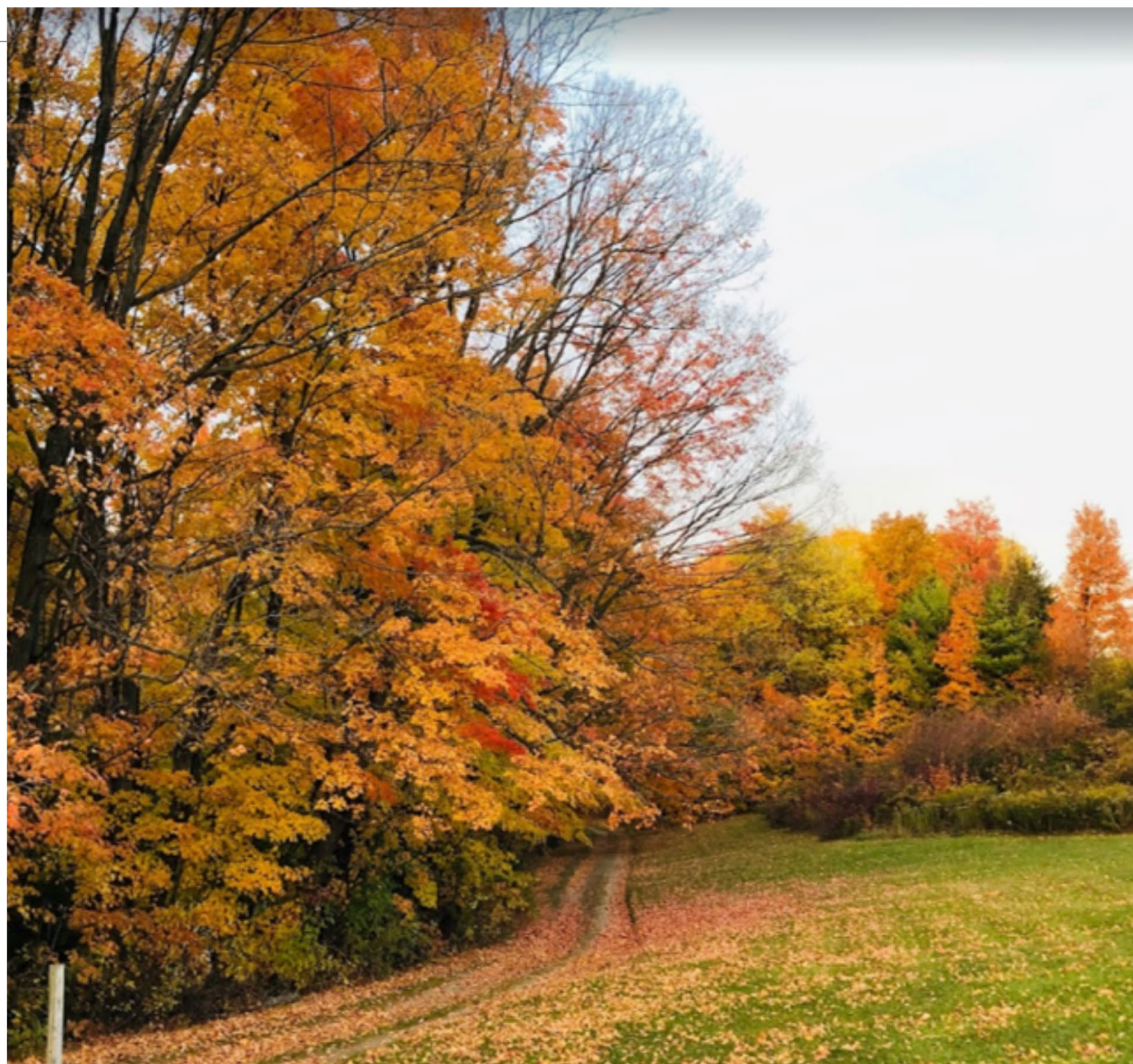
The policy review integrates and builds on the natural heritage system planning work of the local municipalities and conservation authorities.

The review includes updated mapping in the Regional Official Plan where this is needed to ensure Core Areas of the Greenlands System reflects best available data and to meet provincial policy conformity/consistency requirements .

The intent is to achieve a Greenlands System that reflects Natural Heritage System planning based on current practices in conservation ecology.

The review is to:

- Ensure Conformity with Provincial Policy
- Transition from feature-based to system-based
- Improve the system-based approach to natural heritage planning, including the identification of linkages and corridors



## Greenlands System

### Greenlands

#### Overview

The Greenlands System Policy Review will be updating the natural heritage system planning policies in the Regional Official Plan so that the Greenlands System policy framework is consistent and conforms with provincial policy and plans.

The proposed policies provide a transition from a features-based approach to a more systems-based approach for natural heritage so that natural heritage features are linked and enhanced.

The policy review integrates and builds on the natural heritage system planning work of the local municipalities and conservation authorities.

The review includes updated mapping in the Regional Official Plan where this is needed to ensure Core Areas of the Greenlands System reflects best available data and to meet provincial policy conformity/consistency requirements .

The intent is to achieve a Greenlands System that reflects Natural Heritage System planning based on current practices in conservation ecology.

The review is to:

- Ensure Conformity with Provincial Policy
- Transition from feature-based to system-based NHS
- Integrate recent area municipal and conservation authority NHS policies and studies
- Provide public consultation on draft policies and mapping
- Mapping updates include:
  - Provincial Plan NHS System designations
  - Changes to the Core Areas of the Greenlands System

[Link to Discussion Paper](#)

### Greenlands

## Peel2041

Regional Official Plan Review

# Greenlands System

## Peel 2041 Discussion Paper

May 2020



## Greenlands System

### Greenlands

#### Policy Drivers and Background Studies

There are a variety of background policy, documents and studies that are informing the policy review including:

- [The Provincial Policy Statement, 2020](#)
- [A Place to Grow, 2019](#)
- [Greenbelt Plan, 2017](#)
- [Oak Ridges Moraine Conservation Plan, 2017](#)
- [City of Mississauga's Natural Heritage and Urban Forest Strategy, 2014](#)
- [City of Brampton's Natural Heritage and Environment Management Strategy, 2015](#)
- [Credit Valley Conservation Regional Natural Heritage System in the Town of Caledon and Region of Peel, 2019.](#)

Supporting information and analysis includes:

Planning considerations for the environment, climate change, agriculture and resources

### Greenlands

#### Policy Drivers: Provincial Policy Statement and Growth Plan

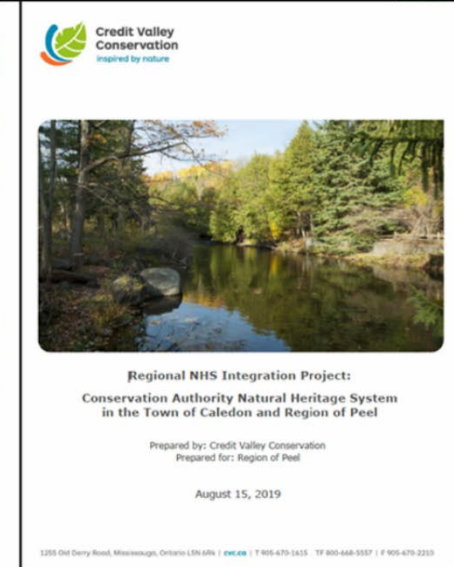
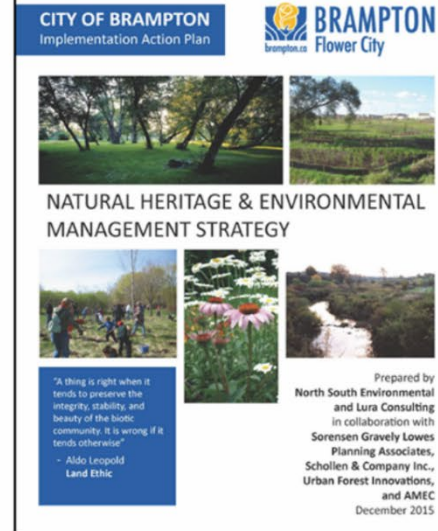
##### Provincial Policy Statement, 2020

A key change in the 2020 Provincial Policy Statement (PPS) is that municipalities are now required to identify natural heritage systems in their official plans.

The draft policies ensure that there is conformity with the requirements of the PPS including the following:

##### Provincial Policy Statement Natural Heritage (2.1)

- Natural features and areas shall be protected for the long term (2.1.1).8
- The diversity and connectivity of natural features in an area, and the long-term



## Greenlands System

## Policy Drivers: Provincial Policy Statement and Growth Plan

## Provincial Policy Statement, 2020

A key change in the 2020 Provincial Policy Statement (PPS) is that municipalities are now required to identify natural heritage systems in their official plans.

The draft policies ensure that there is conformity with the requirements of the PPS including the following:

## Provincial Policy Statement Natural Heritage (2.1)

- Natural features and areas shall be protected for the long term (2.1.1).8
- The diversity and connectivity of natural features in an area, and the long-term ecological function and biodiversity of natural heritage systems, should be maintained, restored or, improved, recognizing linkages between and among natural heritage features and areas, surface water features and ground water features (2.1.2).
- Natural heritage systems shall be identified (2.1.3) in Ecoregions 6E & 7E.
- The Region's Plan will also need to be updated to conform to the new 2019 Growth Plan policies.

## 2019 A Place to Grow Growth Plan

The Growth Plan's Natural Heritage System policies will need to be added to the Regional Plan. The Growth Plan's Natural Heritage System designation, similar to the Greenbelt's, is an overlay that only affects three small areas in Peel.

Within the Growth Plan Natural Heritage System (NHS), the full range of existing and new agricultural, agriculture related uses, on-farm diversified and normal farm practices are permitted.

The draft policies ensure that there is conformity with the requirements of the Growth Plan including the following:

## Growth Plan Policies for Protecting What is Valuable (4.2)

- Identify and protect the Natural Heritage System (NHS) for the Greater Golden Horseshoe outside settlement areas and Greenbelt areas.
- Municipalities are required to incorporate the Growth Plan NHS mapping and policies in their official plans.

## Greenlands

## Proposed Policy Framework

- The policy framework builds on the systems approach in provincial policies and plans.
- Provides policy direction for both the Greenlands System and Water Resource System.
- Recognizes the significant landscapes and natural heritage system designations of the provincial plans as components.
- Retains the Core Areas, Natural Areas and Corridors (NAC) and Potential Natural Areas and Corridors (PNAC) policy framework.
- The relationship between the Greenlands System and Agricultural System is also recognized as these systems overlap and are mutually supportive.

Image: Cheltenham Badlands, Town of Caledon

## Greenlands

## Proposed Policies

"The policy framework provides for the Core, NAC and PNAC components of the Greenlands System to be combined, restored and enhanced to provide an integrated natural heritage system for the region."

The Greenlands System Core, NAC and PNAC policy framework is expanded to integrate additional components including:

- Natural Heritage System for the Growth Plan
- Greenbelt Plan Natural Heritage System

ontario.ca/PPS

Provincial Policy  
Statement, 2020

Under the *Planning Act*

Ontario 

A Place to  
Grow

Growth Plan for the Greater  
Golden Horseshoe

Ontario 

## Greenlands System

### Greenlands

#### Proposed Policy Framework

- The policy framework builds on the systems approach in provincial policies and plans.
- Provides policy direction for both the Greenlands System and Water Resource System.
- Recognizes the significant landscapes and natural heritage system designations of the provincial plans as components.
- Retains the Core Areas, Natural Areas and Corridors (NAC) and Potential Natural Areas and Corridors (PNAC) policy framework.
- The relationship between the Greenlands System and Agricultural System is also recognized as these systems overlap and are mutually supportive.

Image: Cheltenham Badlands, Town of Caledon

### Greenlands

#### Proposed Policies

*"The policy framework provides for the Core, NAC and PNAC components of the Greenlands System to be combined, restored and enhanced to provide an integrated natural heritage system for the region."*

The Greenlands System Core, NAC and PNAC policy framework is expanded to integrate additional components including:

- Natural Heritage System for the Growth Plan
- Greenbelt Plan Natural Heritage System
- Urban River Valley designation
- Oak Ridges Moraine Conservation Plan Natural Core and Natural Linkage Areas
- Niagara Escarpment Plan Escarpment Natural and Escarpment Protection designations
- Greenlands System Protection, Restoration and Enhancement



## Greenlands System

### Greenlands

#### Proposed Policies

*"The policy framework provides for the Core, NAC and PNAC components of the Greenlands System to be combined, restored and enhanced to provide an integrated natural heritage system for the region."*

The Greenlands System Core, NAC and PNAC policy framework is expanded to integrate additional components including:

- Natural Heritage System for the Growth Plan
- Greenbelt Plan Natural Heritage System
- Urban River Valley designation
- Oak Ridges Moraine Conservation Plan Natural Core and Natural Linkage Areas
- Niagara Escarpment Plan Escarpment Natural and Escarpment Protection designations
- Greenlands System Protection, Restoration and Enhancement

Additional Policy Direction is provided to transition to a Natural Heritage Systems approach and includes:

- Updated policy direction for adjacent lands
- Enhancement Areas are identified, restored and protected
- Linkages among and between components of the Greenlands system are planned

#### Draft Policies in the Official Plan Office Consolidation – June 25, 2020

The December 2018 Region of Peel Office Consolidation has been updated to now show tracked changes illustrating draft policies as of June 25, 2020. Policy Changes related to the Greenlands System are found primarily in [Section 2.3 Greenlands System in Peel](#). [Draft policies – June 25, 2020](#).

[A Policy and Mapping Summary Table](#) has been developed to provide a quick high-level summary of the key policy and mapping changes proposed.

*This information has been prepared as reference for consultation purposes only, and does not represent adopted, approved or in-effect policies (see [in-effect Official Plan](#) and adopting by-law itself for current policies).*

*Image: Caledon Hills, Town of Caledon*

### Greenlands

#### Proposed Mapping

#### Schedule Y1 (formerly Schedule A) - Core Areas of the Greenlands System in Peel

Schedule Y1 (formerly Schedule A) is updated to reflect updated Core Areas of the Greenlands System in Peel. The Schedule represents provincially and regionally significant features and areas that are considered a sub-set of what would be significant under the PPS.

The natural heritage features and areas included in the Core Area mapping are:

- Provincially significant wetlands
- Woodlands
- Valley and stream corridors (main branches, major tributaries and other tributaries)
- Environmentally Sensitive or Significant Areas and Provincial Life Areas of Natural and Scientific Interest
- Escarpment Natural Areas

[Link to PDF](#)



## Greenlands System

### Greenlands

#### Proposed Mapping

#### Schedule Y1 (formerly Schedule A) - Core Areas of the Greenlands System in Peel

Schedule Y1 (formerly Schedule A) is updated to reflect updated Core Areas of the Greenlands System in Peel. The Schedule represents provincially and regionally significant features and areas that are considered a sub-set of what would be significant under the PPS.

The natural heritage features and areas included in the Core Area mapping are:

- Provincially significant wetlands
- Woodlands
- Valley and stream corridors (main branches, major tributaries and other tributaries)
- Environmentally Sensitive or Significant Areas and Provincial Life Areas of Natural and Scientific Interest
- Escarpment Natural Areas

[Link to PDF](#)

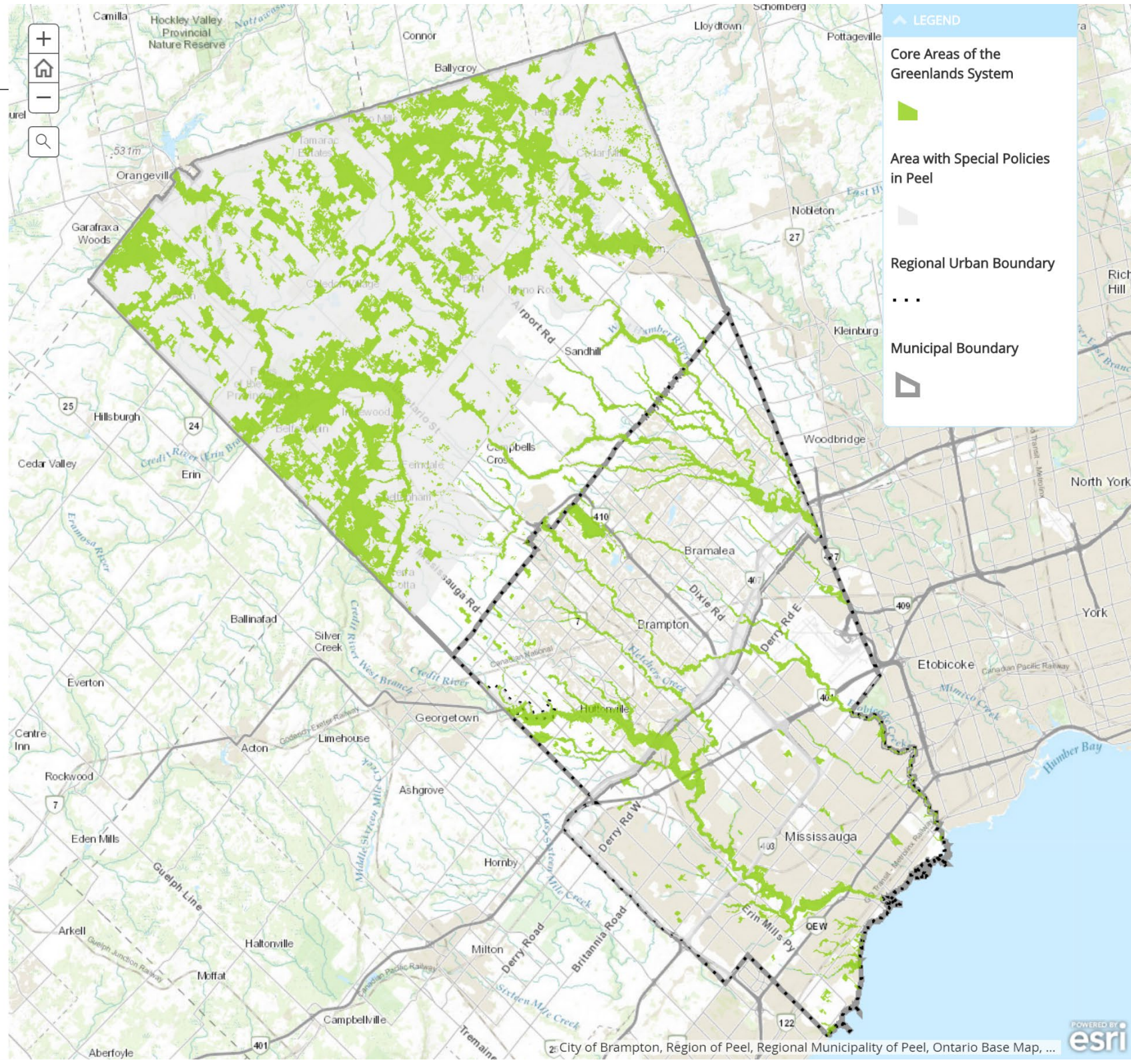
### Greenlands

#### Proposed Mapping

#### Contributing Mapping Changes to Schedule Y1 - Maps 1 & 2 Core Areas of the Greenlands System

Changes to provincial mapping of natural heritage features are shown in red on the adjacent maps:

- Map 1 shows additions to provincial mapping of significant wetlands



## Greenlands System

### Greenlands

#### Proposed Mapping

#### Contributing Mapping Changes to Schedule Y1 - Maps 1 & 2 Core Areas of the Greenlands System

Changes to provincial mapping of natural heritage features are shown in red on the adjacent maps:

- Map 1 shows additions to provincial mapping of significant wetlands
- Map 2 shows changes to Niagara Escarpment Core Natural Area mapping

These changes are incorporated in Schedule Y1.

Please note, Map 1 is shown on the right and there is a tab at the top of the screen in the blue banner that says "Map 2" that can be clicked to view this map.

### Greenlands

#### Proposed Mapping

#### Schedule X11 (formerly Schedule D3): Greenbelt Plan Area Land Use Designations

Schedule X11 formerly schedule D3 in the Regional Official Plan has been updated to reflect:

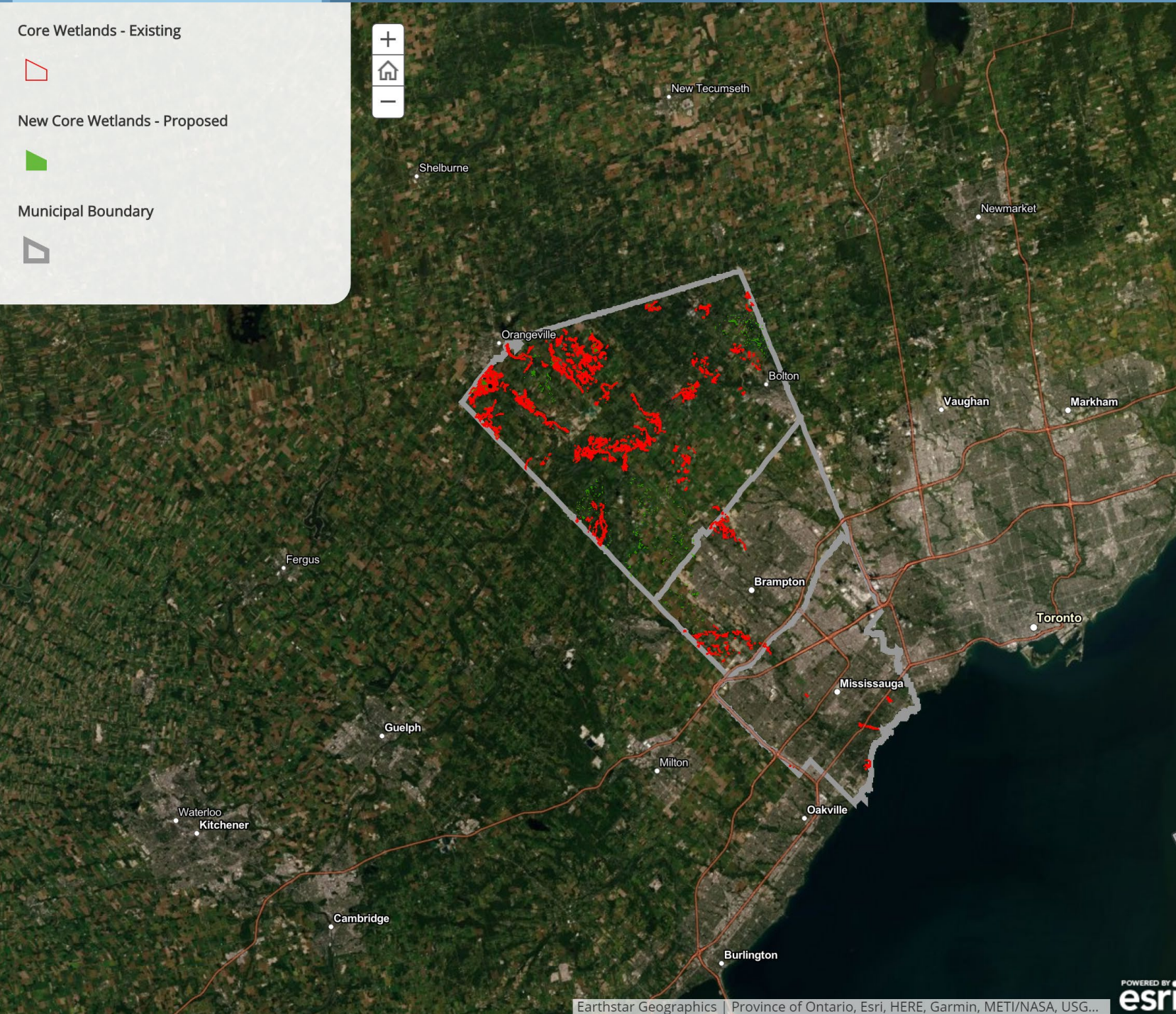
- the Greenbelt Plan's Urban River Valley designation (shown in blue); and
- the Growth Plan's Natural Heritage System overlay (shown in yellow) which applies to 3 very small areas in Caledon. Click on the + button on the map to zoom in to see them.

[Link to PDF](#)

## Map 1 Core Wetlands Changes & Map 2 Core Escarpment Natural Area

Map 1 - Core Wetlands Proposed Changes

Map 2 - Core Escarpment Natural Areas Proposed Changes





## Greenlands System

### Greenlands

#### Proposed Mapping

#### Contributing Mapping Changes to Schedule Y1 - Maps 1 & 2 Core Areas of the Greenlands System

Changes to provincial mapping of natural heritage features are shown in red on the adjacent maps:

- Map 1 shows additions to provincial mapping of significant wetlands
- Map 2 shows changes to Niagara Escarpment Core Natural Area mapping

These changes are incorporated in Schedule Y1.

Please note, Map 1 is shown on the right and there is a tab at the top of the screen in the blue banner that says "Map 2" that can be clicked to view this map.

### Greenlands

#### Proposed Mapping

#### Schedule X11 (formerly Schedule D3): Greenbelt Plan Area Land Use Designations

Schedule X11 formerly schedule D3 in the Regional Official Plan has been updated to reflect:

- the Greenbelt Plan's Urban River Valley designation (shown in blue); and
- the Growth Plan's Natural Heritage System overlay (shown in yellow) which applies to 3 very small areas in Caledon. Click on the + button on the map to zoom in to see them.

[Link to PDF](#)

Map 1 - Core Wetlands Proposed Changes

Map 2 - Core Escarpment Natural Areas Proposed Changes

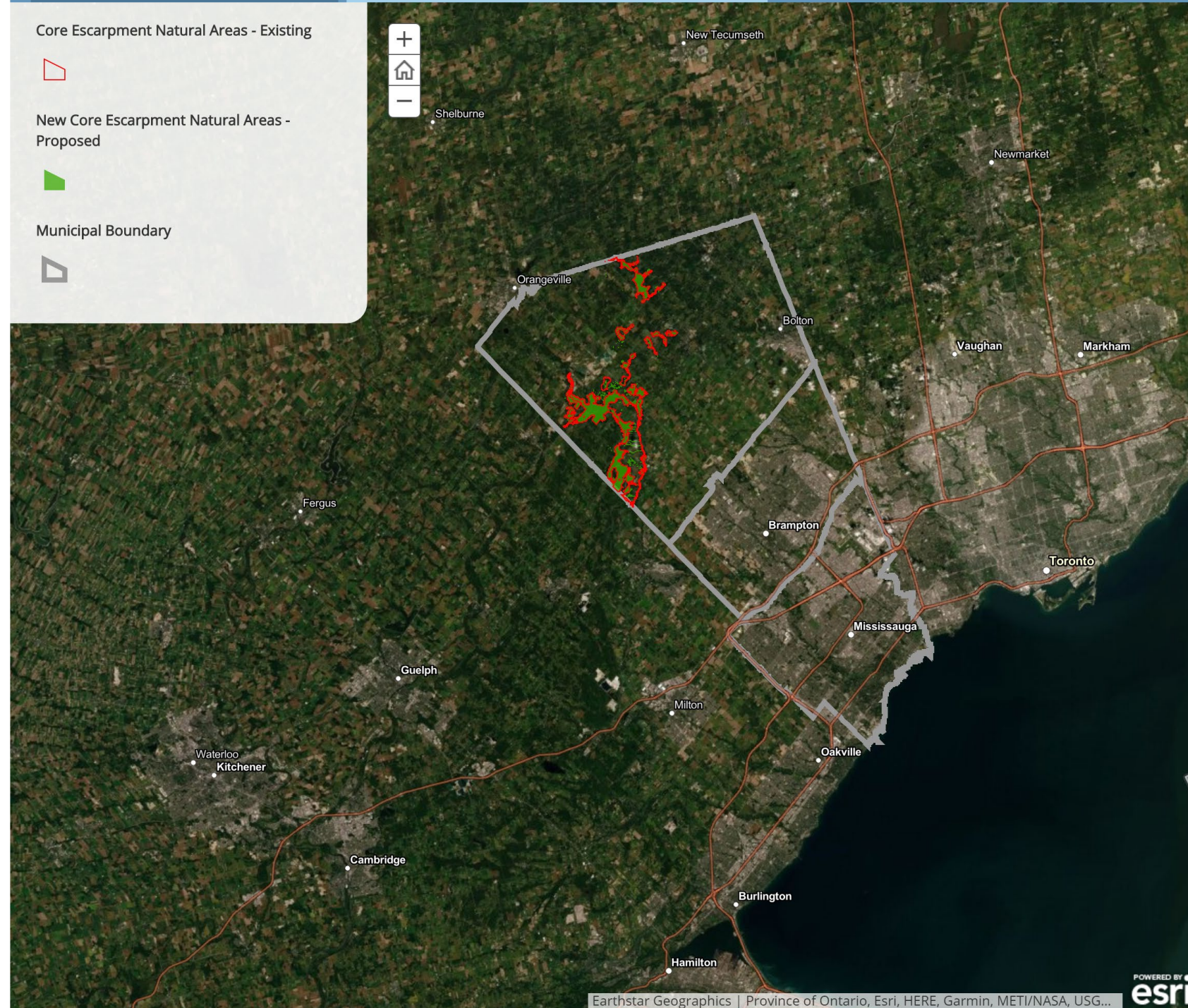
Core Escarpment Natural Areas - Existing



New Core Escarpment Natural Areas - Proposed



Municipal Boundary



## Greenlands System

### Greenlands

#### Proposed Mapping

#### Schedule X11 (formerly Schedule D3): Greenbelt Plan Area Land Use Designations

Schedule X11 formerly schedule D3 in the Regional Official Plan has been updated to reflect:

- the Greenbelt Plan's Urban River Valley designation (shown in blue); and
- the Growth Plan's Natural Heritage System overlay (shown in yellow) which applies to 3 very small areas in Caledon. Click on the + button on the map to zoom in to see them.

[Link to PDF](#)

### Greenlands

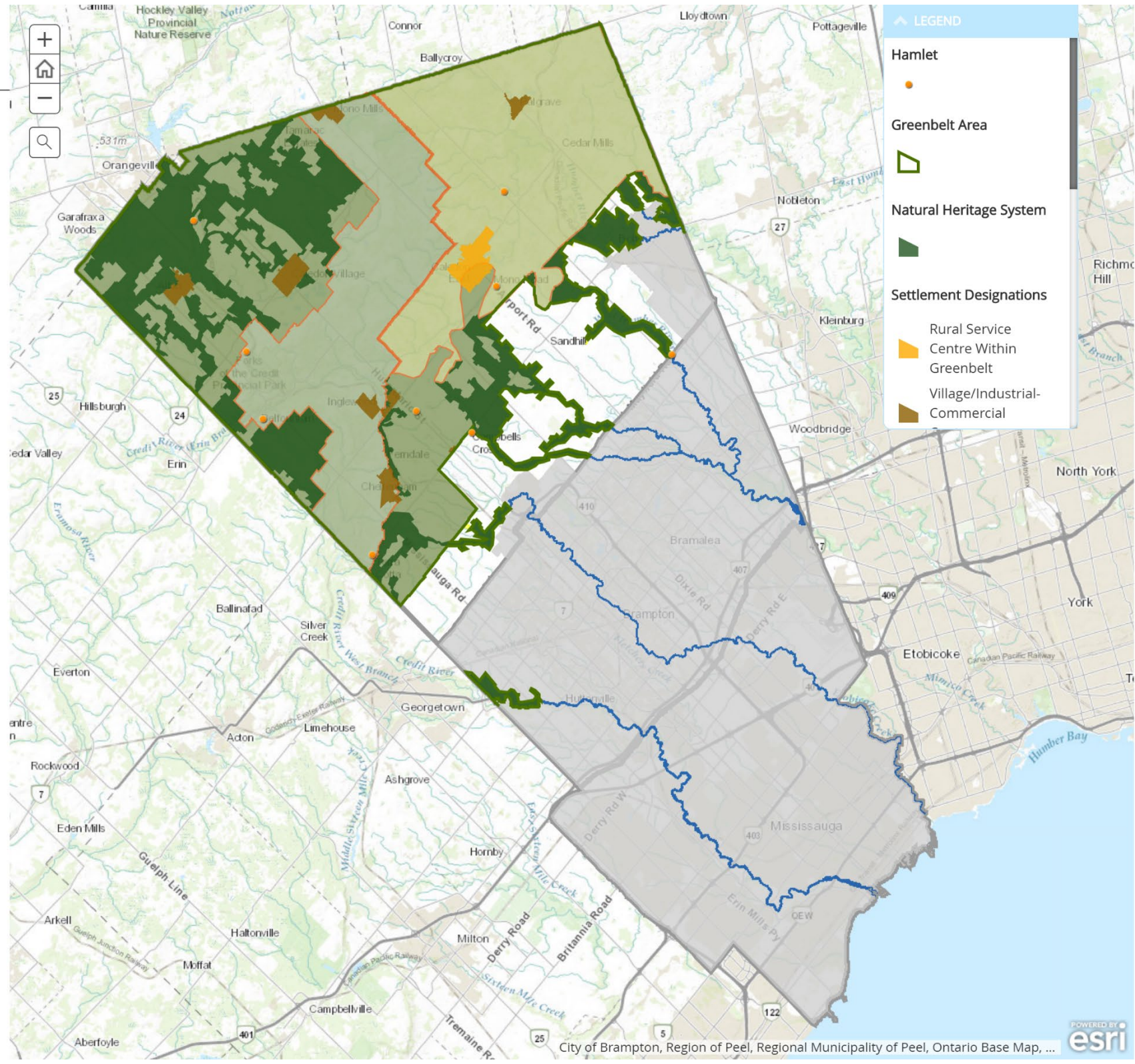
#### Proposed Mapping

#### New Figure Y1 - Regional Greenlands System Provincial Plan Natural Heritage Systems

This new Figure depicts the provincial plan natural heritage system overlays and designations applicable to Peel.

*"The significant landscapes and natural heritage system designations of the provincial plans are fundamental building blocks of the Greenlands System framework along with policies that provide for the protection of key natural heritage features, key hydrologic areas and key hydrologic features."*

[Link to PDF](#)



## Greenlands System

### Greenlands

#### Proposed Mapping

#### New Figure Y1 - Regional Greenlands System Provincial Plan Natural Heritage Systems

This new Figure depicts the provincial plan natural heritage system overlays and designations applicable to Peel.

*"The significant landscapes and natural heritage system designations of the provincial plans are fundamental building blocks of the Greenlands System framework along with policies that provide for the protection of key natural heritage features, key hydrologic areas and key hydrologic features."*

[Link to PDF](#)

### Greenlands

#### Proposed Mapping

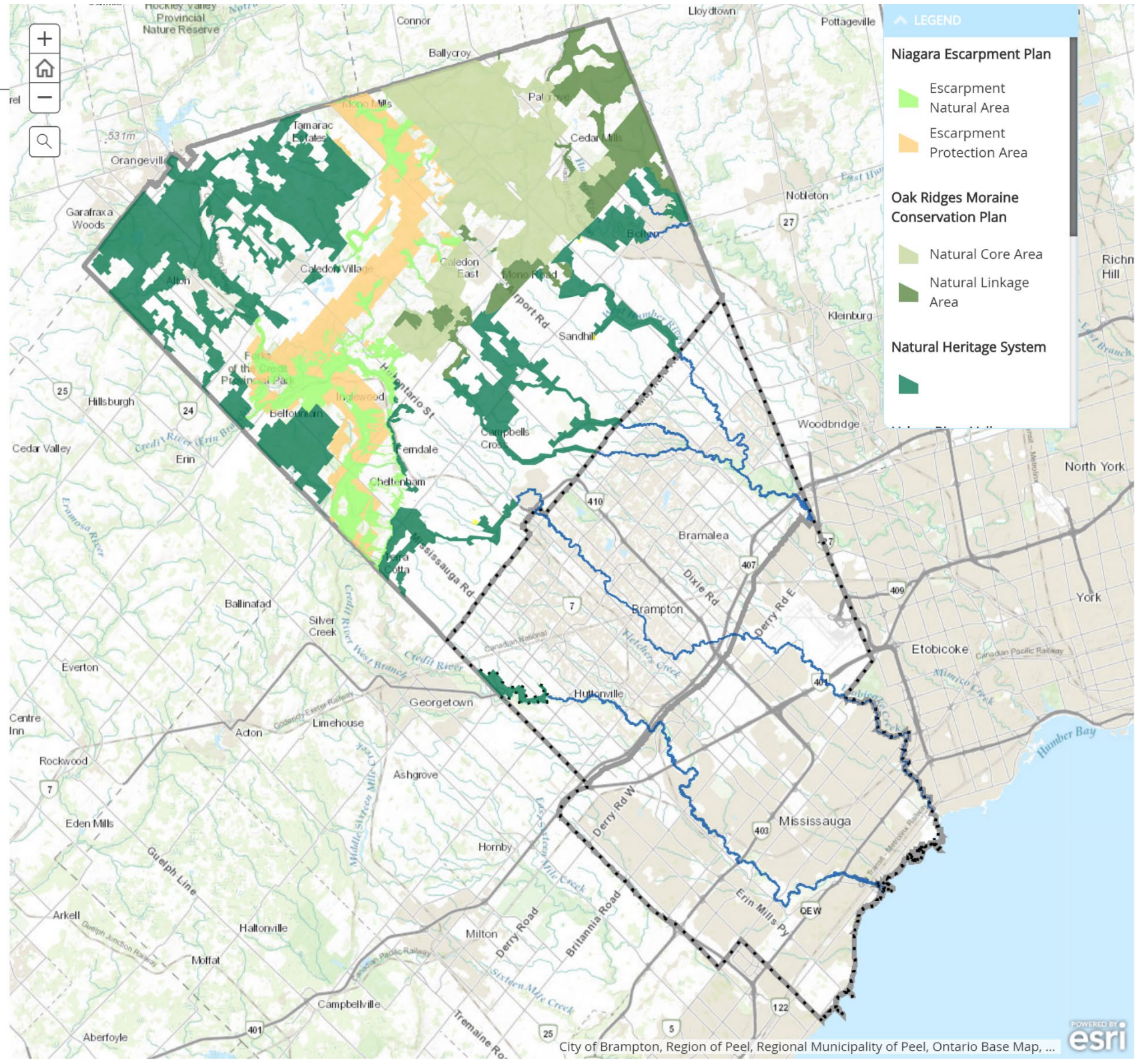
#### New Figure Y2 - Regional Greenlands System Core Areas, Natural Areas and Corridors and Potential Natural Areas and Corridors

This new Figure depicts the natural heritage features and areas that are included as elements of the Greenlands System Core, NAC and PNAC framework.

Core Areas, NACs and PNACs are to be further interpreted, protected, restored and enhanced in local municipal official plans.

This framework implements provincial policy direction for the protection, restoration and enhancement of *natural heritage features and areas* at a regional level

*"The policy framework provides for the Core, NAC and PNAC components of the Greenlands System to be combined, restored and enhanced to provide an integrated*



## Greenlands System

### Greenlands

#### Proposed Mapping

#### New Figure Y2 - Regional Greenlands System Core Areas, Natural Areas and Corridors and Potential Natural Areas and Corridors

This new Figure depicts the natural heritage features and areas that are included as elements of the Greenlands System Core, NAC and PNAC framework.

Core Areas, NACs and PNACs are to be further interpreted, protected, restored and enhanced in local municipal official plans.

This framework implements provincial policy direction for the protection, restoration and enhancement of *natural heritage features and areas* at a regional level

*“The policy framework provides for the Core, NAC and PNAC components of the Greenlands System to be combined, restored and enhanced to provide an integrated natural heritage system for the region.”*

[Link to PDF](#)

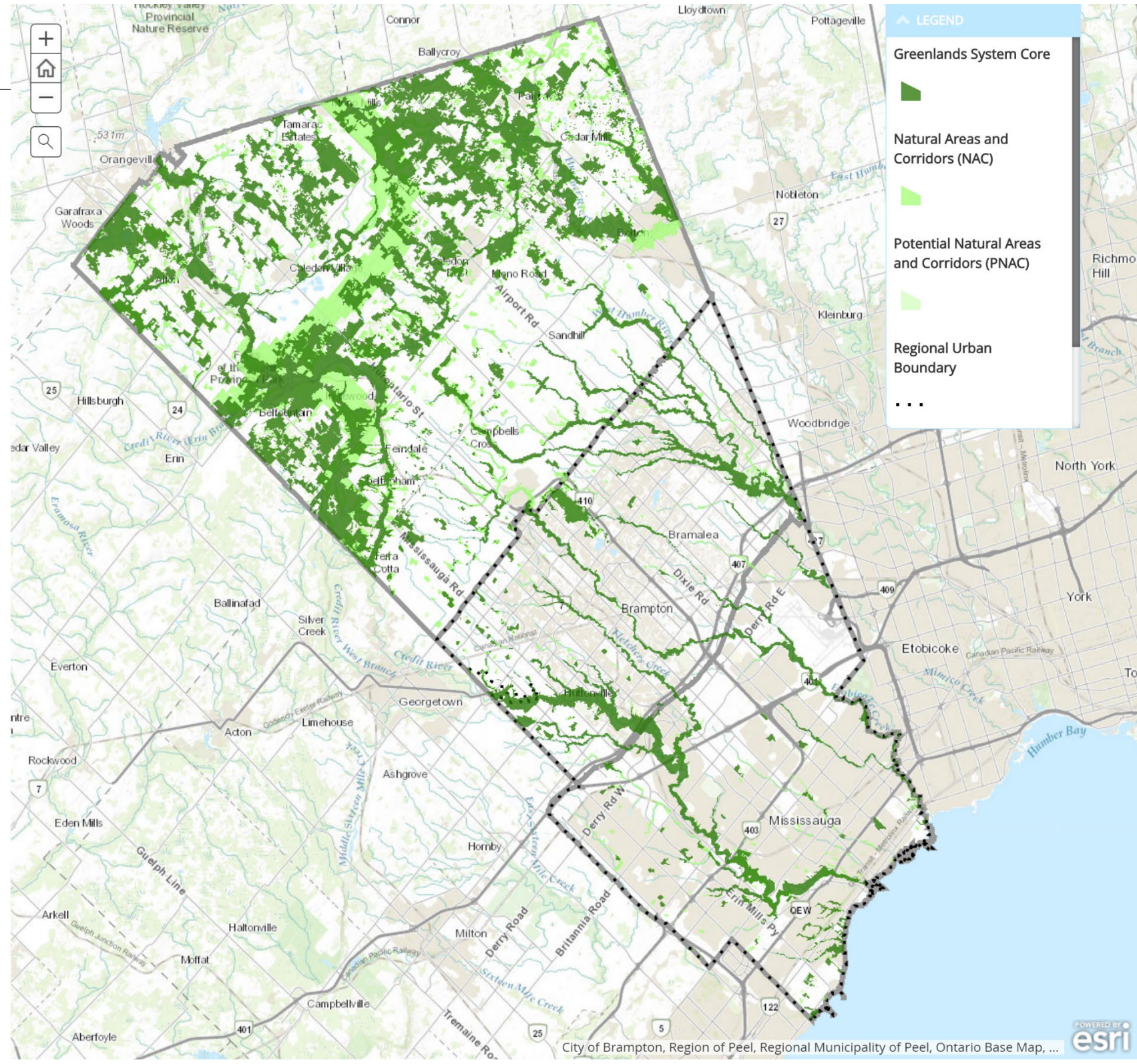
### Greenlands

#### Proposed Mapping

#### New Figure Y3 - Conservation Authority Natural Heritage System

This figure:

- At regional scale, identifies lands in existing natural cover and lands with potential to be restored or enhanced
- Identification requires further refinement and implementation at local level
- Provides a science-based foundation for the implementation of natural heritage system planning in Peel by the local municipalities



# Greenlands System

## Greenlands

### Proposed Mapping

#### New Figure Y3 - Conservation Authority Natural Heritage System

This figure:

- At regional scale, identifies lands in existing natural cover and lands with potential to be restored or enhanced
- Identification requires further refinement and implementation at local level
- Provides a science-based foundation for the implementation of natural heritage system planning in Peel by the local municipalities

*"The Peel CA NHS is a landscape-level tool based on current science and is recommended for consideration and use by the Region and its partners for planning and programming purposes."*

- Credit Valley Conservation, Regional NHS Integration Project, December 2019

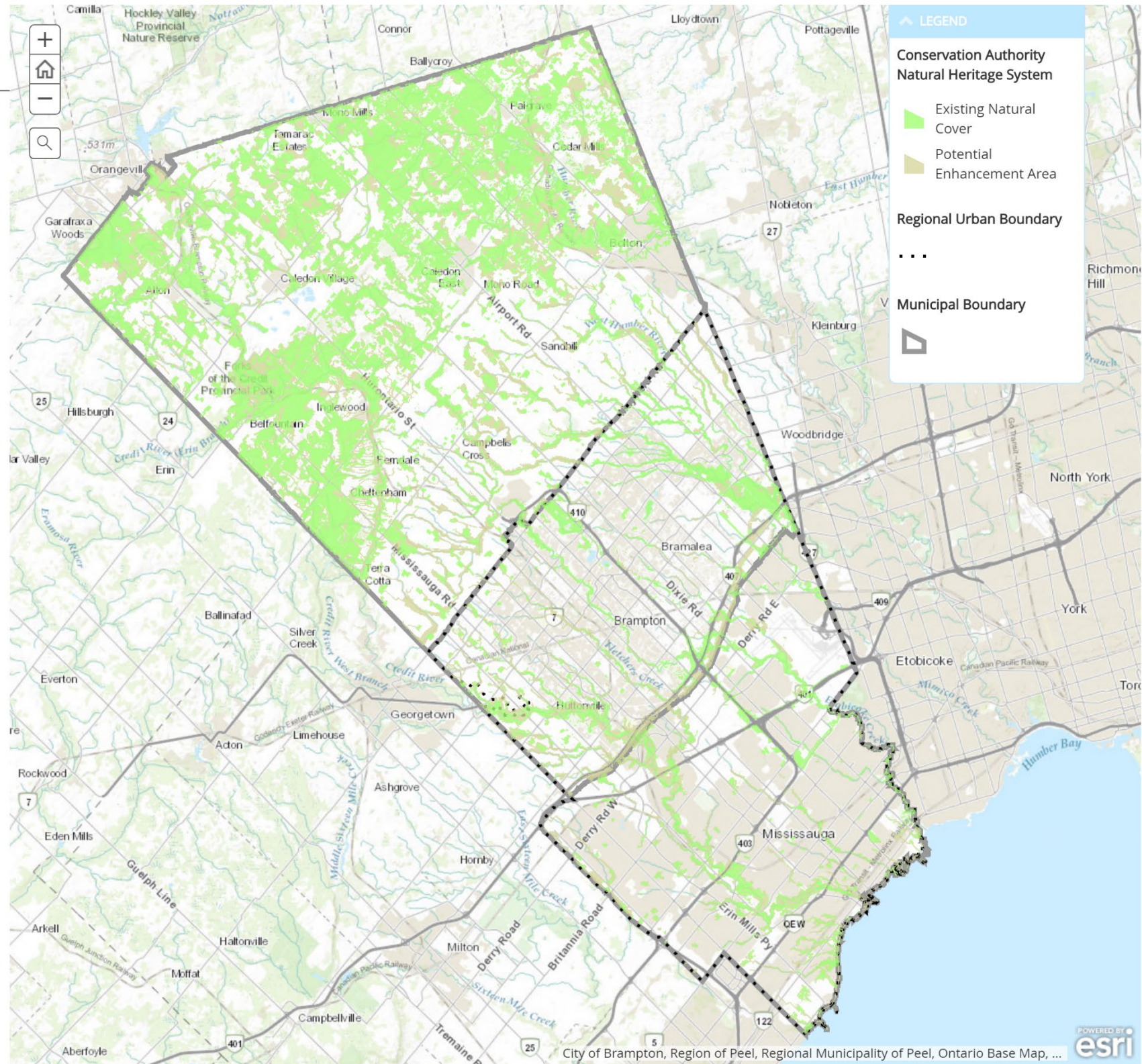
[Link to PDF](#)

## Feedback

### We want to hear from you!

Please fill in the survey to the right.

If you have any questions, please feel free to contact Learie below:



## Greenlands System

*"The policy framework provides for the Core, NAC and PNAC components of the Greenlands System to be combined, restored and enhanced to provide an integrated natural heritage system for the region."*

[Link to PDF](#)

## Greenlands

### Proposed Mapping

#### New Figure Y3 - Conservation Authority Natural Heritage System

This figure:

- At regional scale, identifies lands in existing natural cover and lands with potential to be restored or enhanced
- Identification requires further refinement and implementation at local level
- Provides a science-based foundation for the implementation of natural heritage system planning in Peel by the local municipalities

*"The Peel CA NHS is a landscape-level tool based on current science and is recommended for consideration and use by the Region and its partners for planning and programming purposes."*

- Credit Valley Conservation, Regional NHS Integration Project, December 2019

[Link to PDF](#)

## Feedback

### We want to hear from you!

Please fill in the survey to the right.

If you have any questions, please feel free to contact Learie below:



Learie Miller MSA, MSc, MCIP RPP, EP  
Advisor, Environmental Planning  
Regional Planning and Growth Management Division  
Public Works  
Region of Peel  
10 Peel Centre Drive, Suite A, 6th Floor  
Brampton, Ontario L6T 4B9

Phone: 905-791-7800 ext. 4266  
Email: [learie.miller@peelregion.ca](mailto:learie.miller@peelregion.ca)

*Disclaimer: The information presented on the maps within this application have been prepared as a reference for consultation purposes only. These maps provide visualization of proposed policy areas and do not represent adopted, approved or in-effect mapping. The in-effect Official Plan schedules and figures, adopting by-law itself and any amending by-laws or Local Planning Appeal Tribunal decisions must be consulted for the official data. Links to all in-effect Official Plan maps are located here: <http://www.peelregion.ca/planning/officialplan/download.htm>  
© Region of Peel*

### We Want to Hear from You!

Share your thoughts in the comment box below. We will publish all approved comments.

Privacy is important to us. You are not required to provide a name and email unless you would like to be notified of a response, and you will be added to our notification list.\*

Personal information is being collected pursuant to the requirements of the Planning Act, R.S.O. 1990 to notify participants of future consultation, newsletters, and Regional Official Plan policies. With the exception of personal information, all comments may become part of the public record of the review process to assist in making a decision on this planning matter. Questions regarding this collection may be directed to Regional Planning and Growth Management Division, 10 Peel Centre Drive, Suite A, 6th Floor, Brampton, Ontario, L6T 4B9, or at [planpeel@peelregion.ca](mailto:planpeel@peelregion.ca).

\*By agreeing to join our notification list you will receive periodic emails or letters related to the Regional Official Plan Review. You can be taken off this list at any time by emailing [planpeel@peelregion.ca](mailto:planpeel@peelregion.ca) with the headline "unsubscribe."

#### Name

Optional

#### Email

Optional

#### Where do you live?\*

#### What Focus Area does your comment pertain to?\*

 General Greenlands Growth Management Housing Major Transit Station Areas Other: Cultural Heritage & Indigenous Engagement Other: Waste Management Transportation

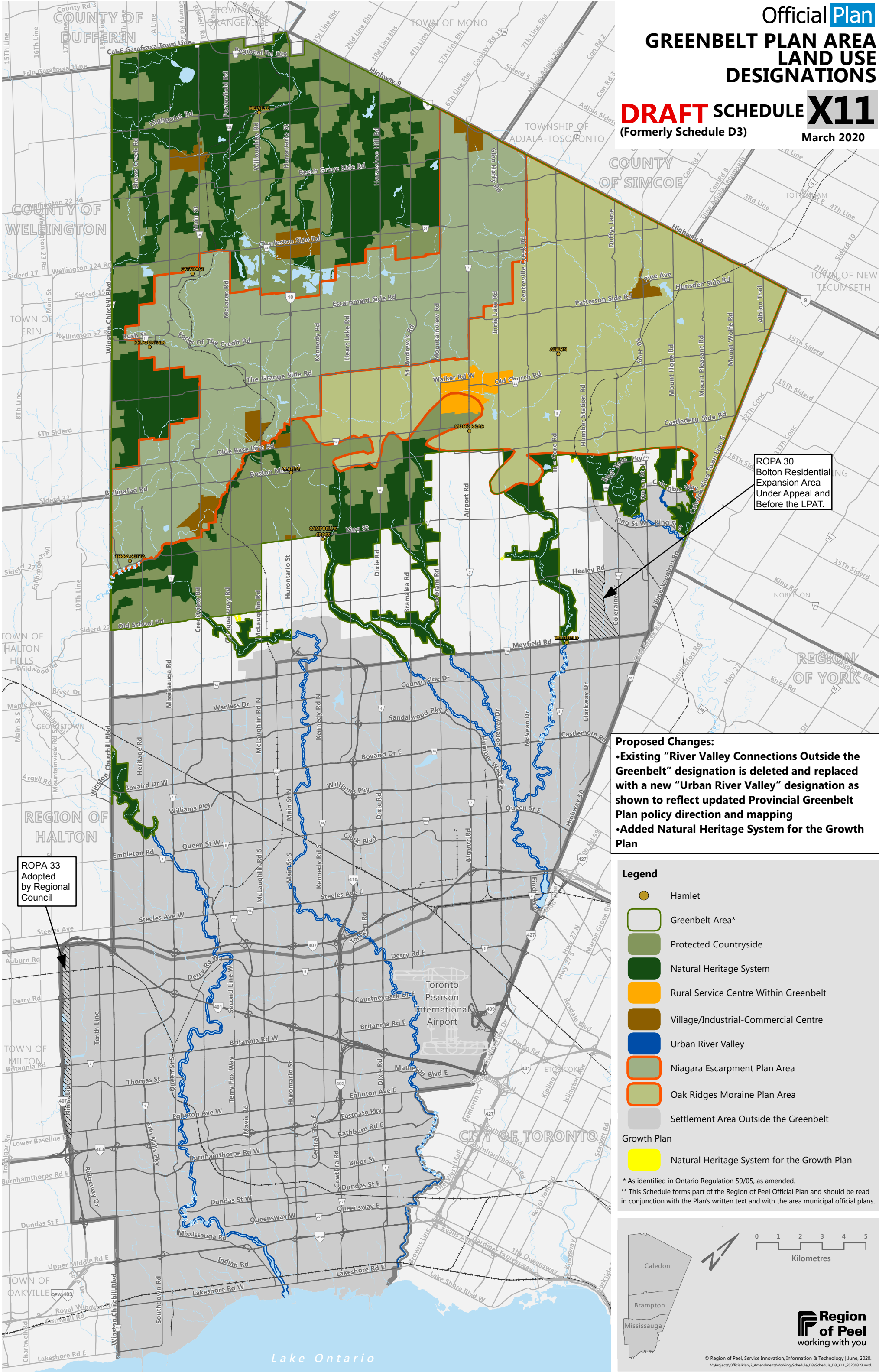
#### Please provide your comments\*

Please do not include any personal identifying information, like names, personal addresses or phone numbers within the comment itself.

PDF Versions of the Schedules/Figures included in this Focus Area

Official Plan  
**GREENBELT PLAN AREA  
 LAND USE  
 DESIGNATIONS**

**DRAFT SCHEDULE X11**  
 (Formerly Schedule D3) March 2020



ROPA 30  
 Bolton Residential  
 Expansion Area  
 Under Appeal and  
 Before the LPAT.

ROPA 33  
 Adopted  
 by Regional  
 Council

**Proposed Changes:**  
 •Existing "River Valley Connections Outside the Greenbelt" designation is deleted and replaced with a new "Urban River Valley" designation as shown to reflect updated Provincial Greenbelt Plan policy direction and mapping  
 •Added Natural Heritage System for the Growth Plan

- Legend**
- Hamlet
  - Greenbelt Area\*
  - Protected Countryside
  - Natural Heritage System
  - Rural Service Centre Within Greenbelt
  - Village/Industrial-Commercial Centre
  - Urban River Valley
  - Niagara Escarpment Plan Area
  - Oak Ridges Moraine Plan Area
  - Settlement Area Outside the Greenbelt
- Growth Plan**
- Natural Heritage System for the Growth Plan

\* As identified in Ontario Regulation 59/05, as amended.  
 \*\* This Schedule forms part of the Region of Peel Official Plan and should be read in conjunction with the Plan's written text and with the area municipal official plans.

0 1 2 3 4 5  
 Kilometres

**Region of Peel**  
 working with you

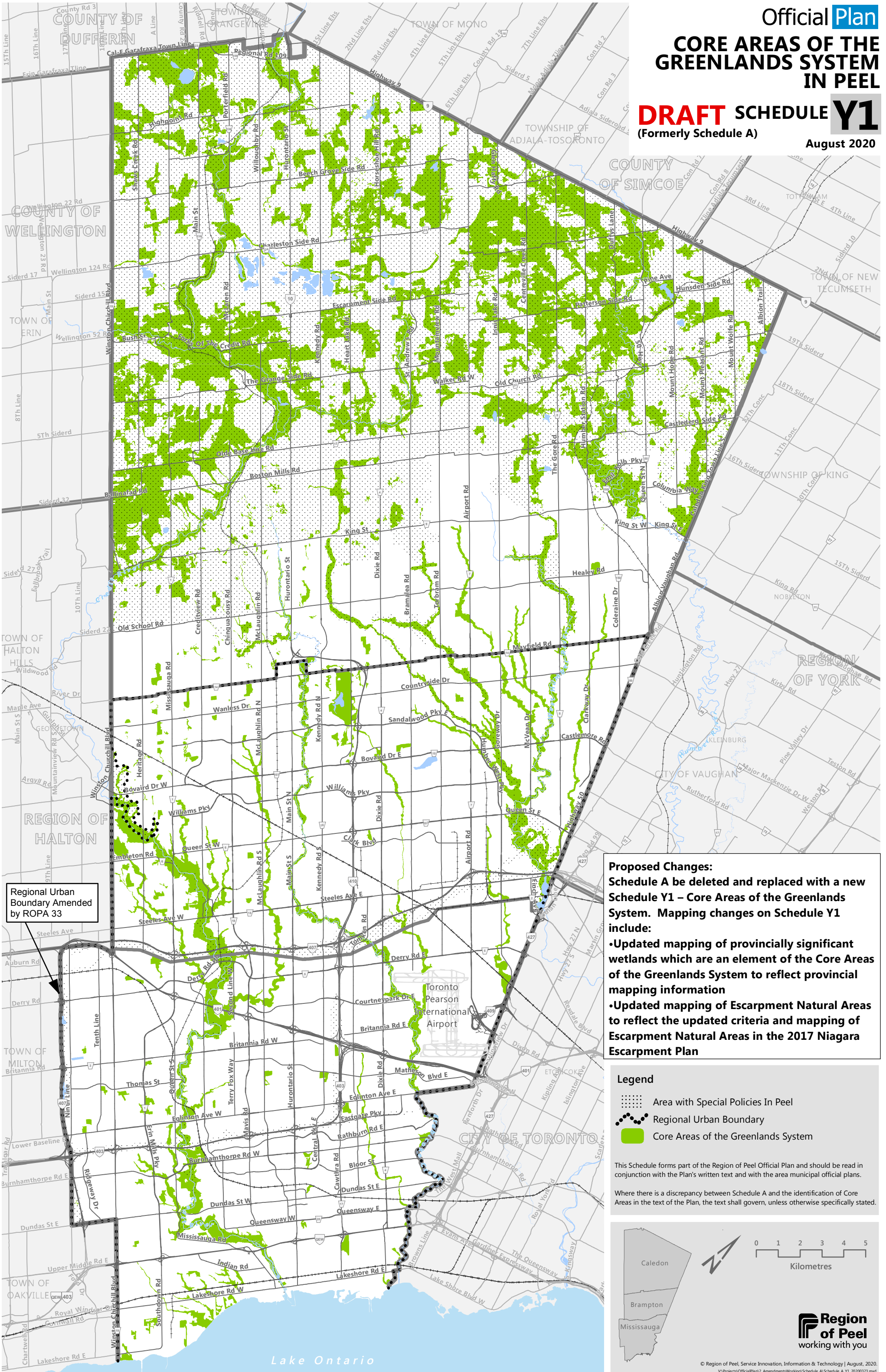
© Region of Peel, Service Innovation, Information & Technology | June, 2020.  
 V:\Projects\OfficialPlan\2\_Amendments\Working\Schedule\_D3\Schedule\_D3\_X11\_20200323.mxd



# CORE AREAS OF THE GREENLANDS SYSTEM IN PEEL

## DRAFT SCHEDULE Y1 (Formerly Schedule A)

August 2020



Regional Urban Boundary Amended by ROPA 33

**Proposed Changes:**  
 Schedule A be deleted and replaced with a new Schedule Y1 – Core Areas of the Greenlands System. Mapping changes on Schedule Y1 include:

- Updated mapping of provincially significant wetlands which are an element of the Core Areas of the Greenlands System to reflect provincial mapping information
- Updated mapping of Escarpment Natural Areas to reflect the updated criteria and mapping of Escarpment Natural Areas in the 2017 Niagara Escarpment Plan

- Legend**
- Area with Special Policies In Peel
  - Regional Urban Boundary
  - Core Areas of the Greenlands System

This Schedule forms part of the Region of Peel Official Plan and should be read in conjunction with the Plan's written text and with the area municipal official plans.

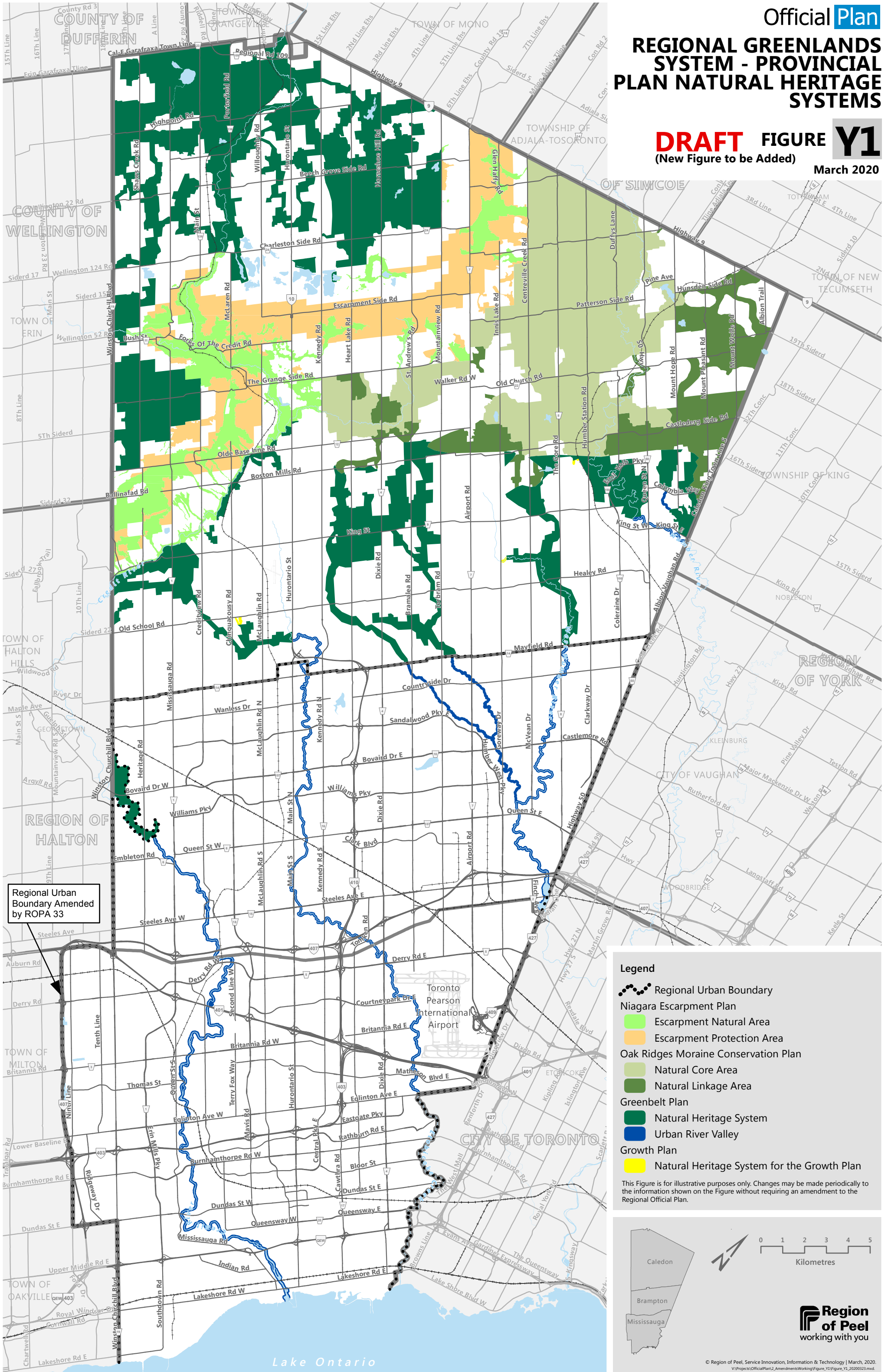
Where there is a discrepancy between Schedule A and the identification of Core Areas in the text of the Plan, the text shall govern, unless otherwise specifically stated.

**Region of Peel**  
working with you

© Region of Peel. Service Innovation, Information & Technology | August, 2020.  
 V:\Projects\OfficialPlan2\_Amendments\Working\Schedule\_A\Schedule\_A\_Y1\_20200323.mxd

# REGIONAL GREENLANDS SYSTEM - PROVINCIAL PLAN NATURAL HERITAGE SYSTEMS

**DRAFT** FIGURE **Y1**  
(New Figure to be Added) March 2020



Regional Urban Boundary Amended by ROPA 33

REGION OF YORK

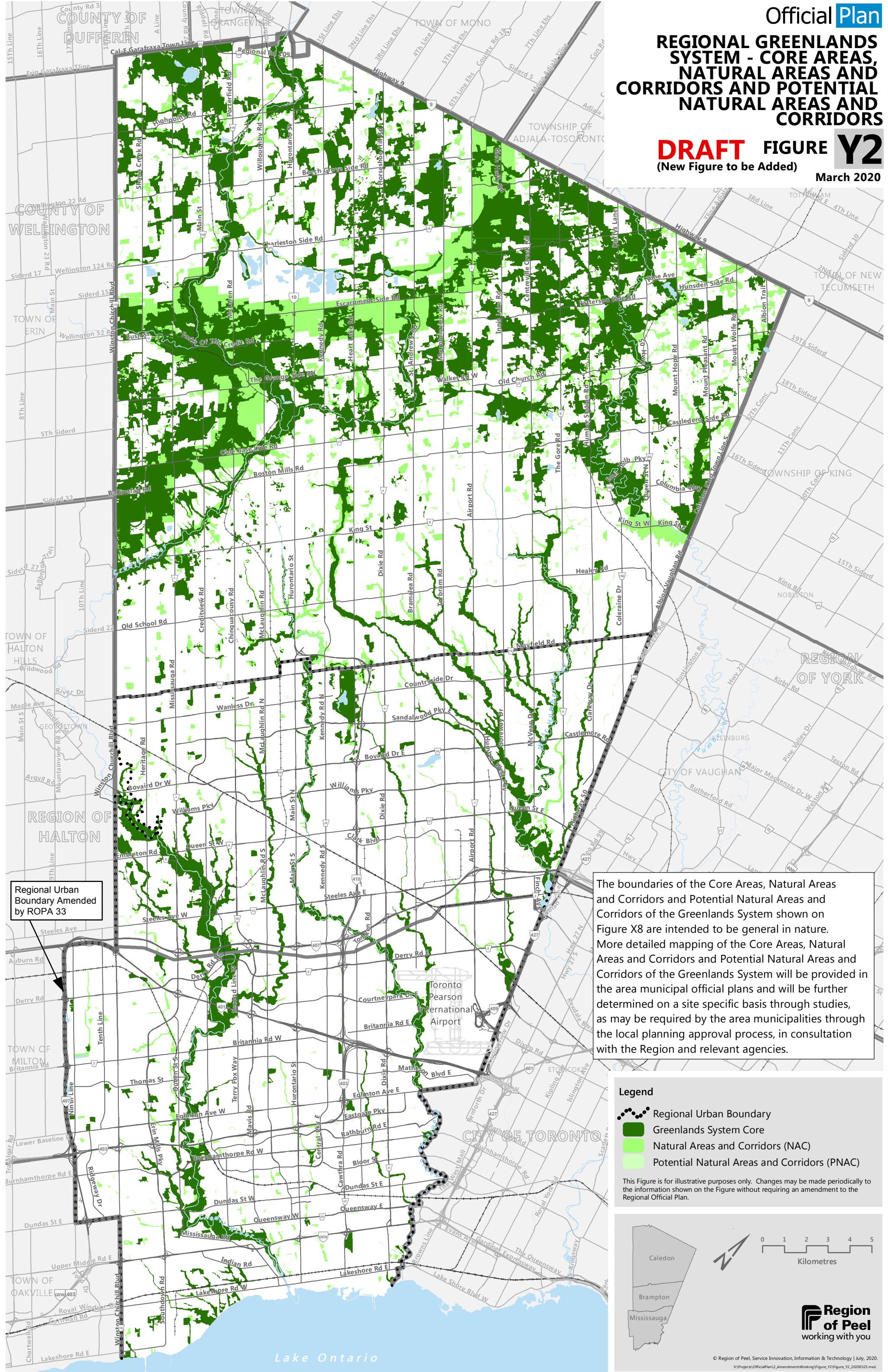
Toronto Pearson International Airport

CITY OF TORONTO

Lake Ontario

# REGIONAL GREENLANDS SYSTEM - CORE AREAS, NATURAL AREAS AND CORRIDORS AND POTENTIAL NATURAL AREAS AND CORRIDORS

**DRAFT** FIGURE **Y2**  
(New Figure to be Added) March 2020



Regional Urban Boundary Amended by ROPA 33

The boundaries of the Core Areas, Natural Areas and Corridors and Potential Natural Areas and Corridors of the Greenlands System shown on Figure X8 are intended to be general in nature. More detailed mapping of the Core Areas, Natural Areas and Corridors and Potential Natural Areas and Corridors of the Greenlands System will be provided in the area municipal official plans and will be further determined on a site specific basis through studies, as may be required by the area municipalities through the local planning approval process, in consultation with the Region and relevant agencies.

**Legend**

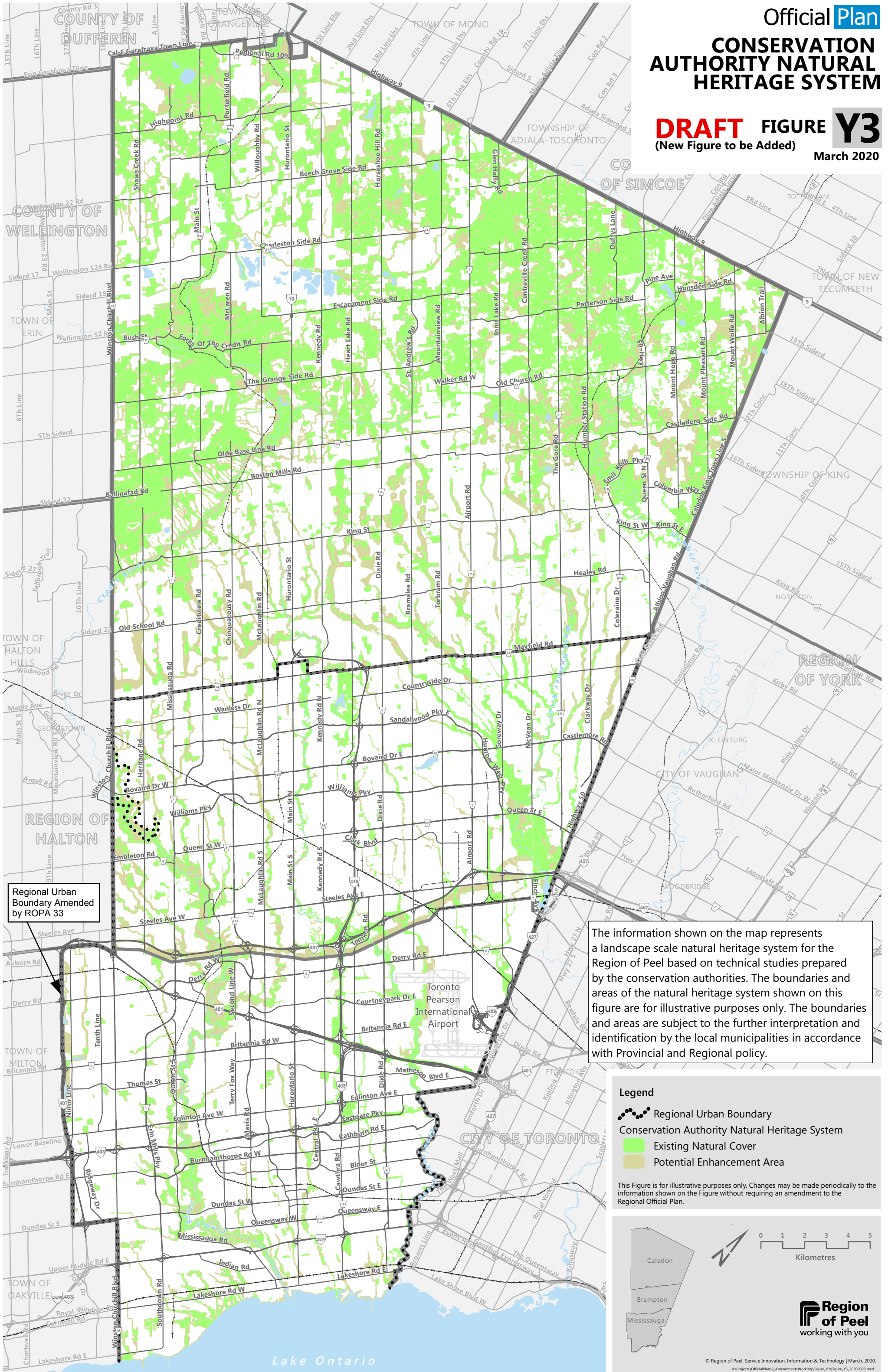
- Regional Urban Boundary
- Greenlands System Core
- Natural Areas and Corridors (NAC)
- Potential Natural Areas and Corridors (PNAC)

This Figure is for illustrative purposes only. Changes may be made periodically to the information shown on the Figure without requiring an amendment to the Regional Official Plan.

**Region of Peel**  
working with you

# CONSERVATION AUTHORITY NATURAL HERITAGE SYSTEM

**DRAFT** FIGURE **Y3**  
(New Figure to be Added) March 2020



Regional Urban Boundary Amended by ROPA 33

The information shown on the map represents a landscape scale natural heritage system for the Region of Peel based on technical studies prepared by the conservation authorities. The boundaries and areas of the natural heritage system shown on this figure are for illustrative purposes only. The boundaries and areas are subject to the further interpretation and identification by the local municipalities in accordance with Provincial and Regional policy.

- Legend**
- Regional Urban Boundary
  - Conservation Authority Natural Heritage System
  - Existing Natural Cover
  - Potential Enhancement Area

This Figure is for illustrative purposes only. Changes may be made periodically to the information shown on the Figure without requiring an amendment to the Regional Official Plan.

