

# Greenlands System



## What are greenland systems?

Also referred to as natural heritage systems, greenland systems are defined as systems made up of natural heritage features and areas, and linkages that provide connectivity between natural heritage features and areas for the movement of plants and animals. Natural heritage features and areas include woodlands, wetlands, valley and stream corridors, wildlife habitat, habitat of endangered and threatened species, Areas of Natural and Scientific Interest, and Environmentally Significant or Sensitive Areas.

## What is the Region doing?

- Reviewing the Greenlands System policies and updating Peel's natural heritage system policies in the Regional Official Plan to be consistent with Provincial policy direction
- Identifying a Regional Natural Heritage System and updating Greenlands System mapping
- Protecting, restoring and enhancing the Greenlands System through land use policies in collaboration with local municipalities and the conservation authorities

## Why are greenland systems important?

- Protect, restore and enhance natural areas in Peel to support biodiversity and ecological integrity
- Provide ecosystem services that are life sustaining or improve quality of life, including a clean and reliable supply of ground water and surface water, moderation of air quality and recreation opportunities

## Regional Official Plan policies will...

- Help the Region adapt to climate change
- Ensure that Peel's natural features and their functions will be preserved over time
- Update policy direction for Natural Heritage System planning
- Revise and update mapping of the Greenlands System
- Add or revise policies for Urban Forest planning, Greenlands System management and Invasive Species



### How can I stay involved?

Follow [@regionofpeel](https://twitter.com/regionofpeel) twitter page or request notification at [planpeel@peelregion.ca](mailto:planpeel@peelregion.ca)

[peelregion.ca/officialplan/review/](https://peelregion.ca/officialplan/review/)

# Greenlands System

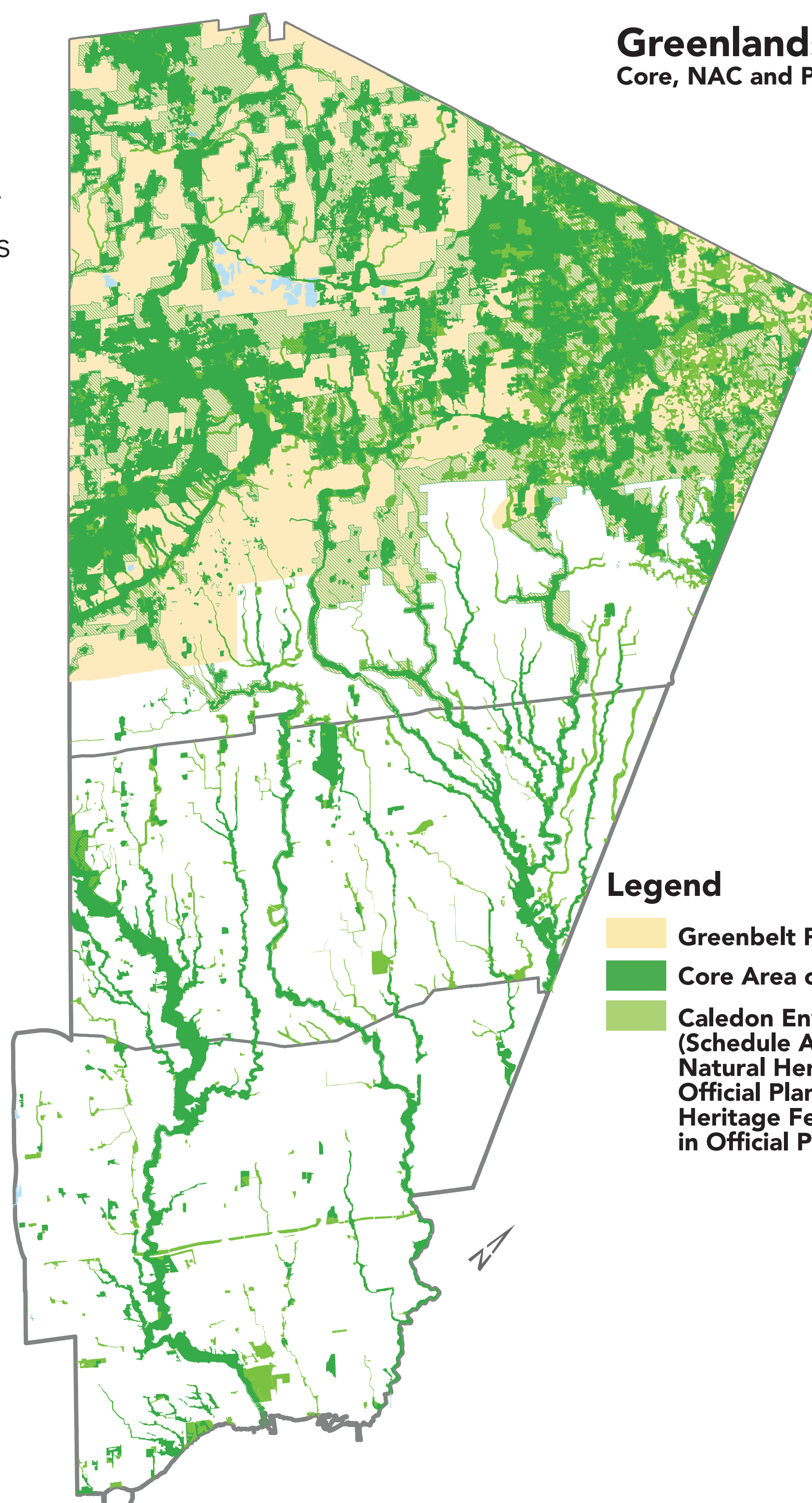


## How are greenlands system policies formed?

The Region's Greenlands System policies and mapping implement policy direction outlined in the Provincial Policy Statement. The policies work in conjunction with the natural heritage system policies of the Greenbelt Plan, Oak Ridges Moraine Conservation Plan, Niagara Escarpment Plan and Growth Plan.

## What are the components of the Greenlands System in the Region?

- Core Areas represent provincially and regionally significant features (e.g. woodlands, wetlands and valleylands) that are mapped in the Regional Official Plan.
- Natural Areas and Corridors (NACs) and Potential Natural Areas and Corridors (PNACs) are components of the Greenlands System that are further interpreted, identified and mapped in the local municipal official plans.
- The Conservation Authorities have updated mapping based on natural heritage science and landscape ecology which the Region is using to refine its Greenlands System mapping.
- Greenlands System components will be expanded to reflect the Natural Heritage System designations and mapping in the Provincial Greenbelt Plans and Growth Plan.



**Greenlands System in Peel**  
Core, NAC and PNAC Features and Areas

### Legend

- Greenbelt Plan Area
- Core Area of the Greenlands System
- Caledon Environmental Protection Area (Schedule A in Official Plan), Mississauga Natural Heritage System (Schedule 3 in Official Plan) and Brampton Natural Heritage Features and Areas (Schedule D in Official Plan)



### How can I stay involved?

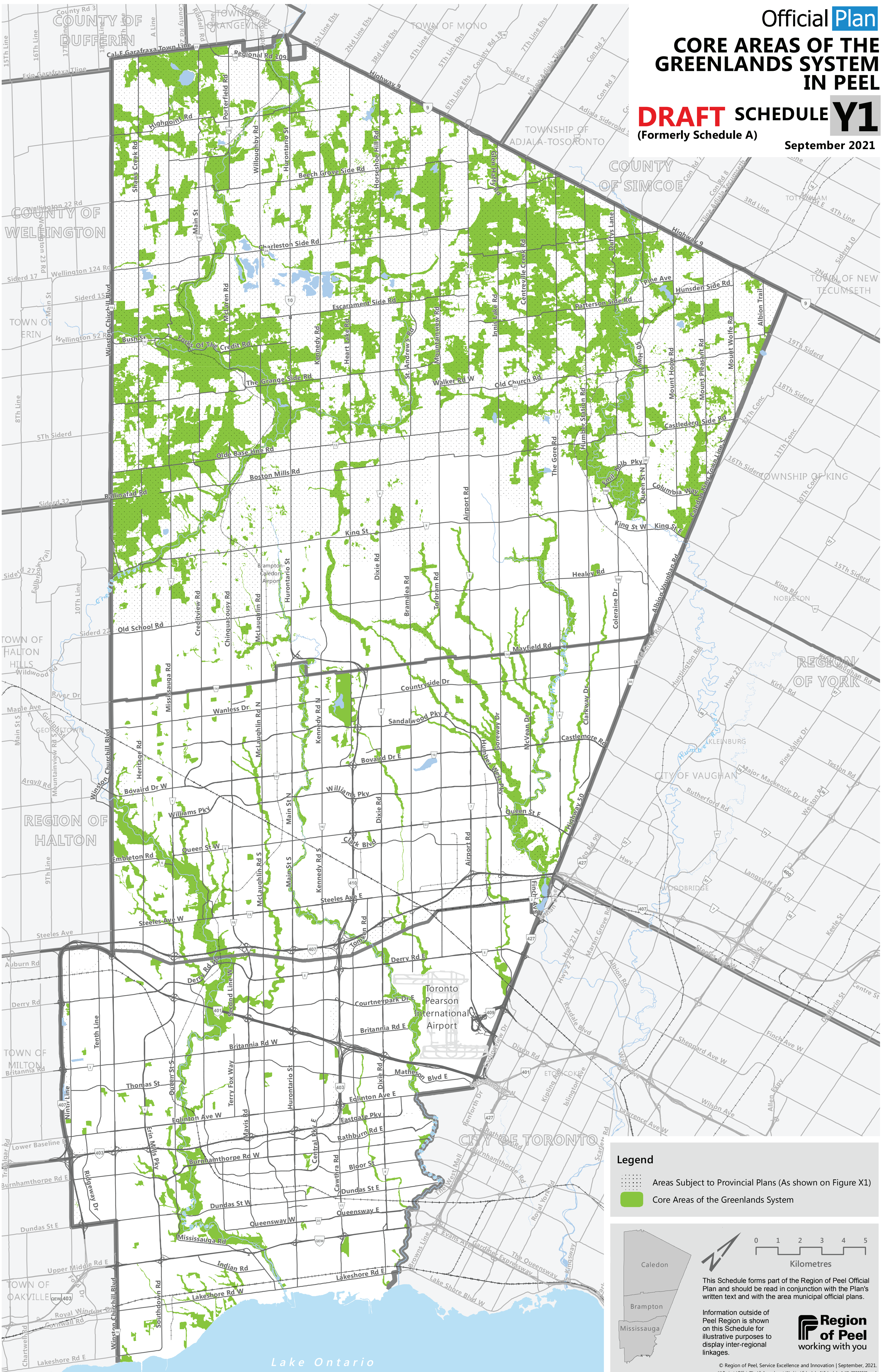
Follow @regionofpeel twitter page or request notification at [planpeel@peelregion.ca](mailto:planpeel@peelregion.ca)

[peelregion.ca/officialplan/review/](https://peelregion.ca/officialplan/review/)

Official Plan  
**CORE AREAS OF THE  
 GREENLANDS SYSTEM  
 IN PEEL**

**DRAFT SCHEDULE Y1**  
 (Formerly Schedule A)

September 2021



**Legend**

- Areas Subject to Provincial Plans (As shown on Figure X1)
- Core Areas of the Greenlands System

0 1 2 3 4 5  
 Kilometres

This Schedule forms part of the Region of Peel Official Plan and should be read in conjunction with the Plan's written text and with the area municipal official plans.

Information outside of Peel Region is shown on this Schedule for illustrative purposes to display inter-regional linkages.

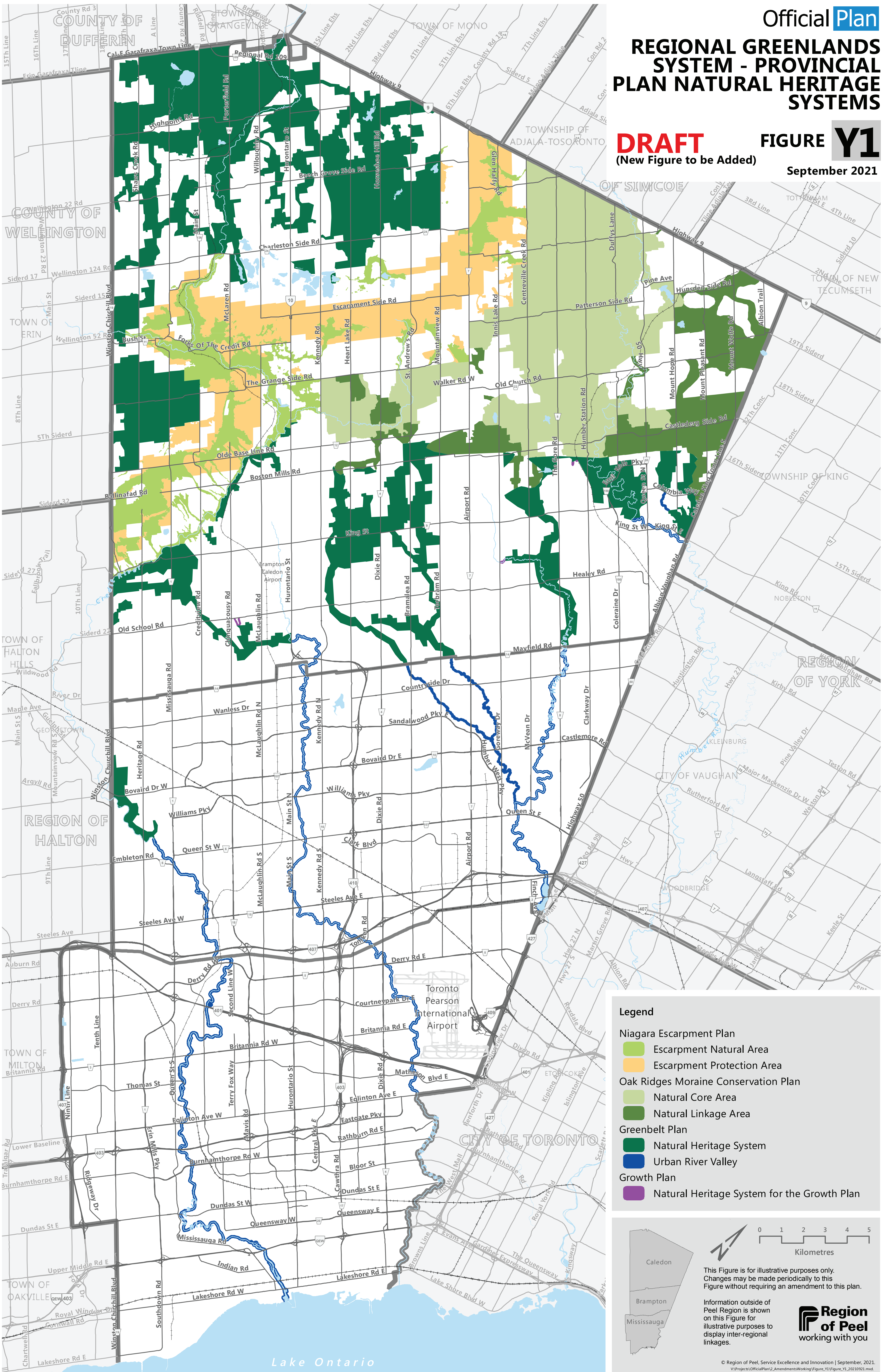
**Region of Peel**  
 working with you

© Region of Peel. Service Excellence and Innovation | September, 2021.  
 W:\Projects\OfficialPlan2\_Amendments\WorkingSchedule\_A\Schedule\_A\_Y1\_20210921.mxd

# REGIONAL GREENLANDS SYSTEM - PROVINCIAL PLAN NATURAL HERITAGE SYSTEMS

**DRAFT**  
(New Figure to be Added)

**FIGURE Y1**  
September 2021



This Figure is for illustrative purposes only. Changes may be made periodically to this Figure without requiring an amendment to this plan.

Information outside of Peel Region is shown on this Figure for illustrative purposes to display inter-regional linkages.

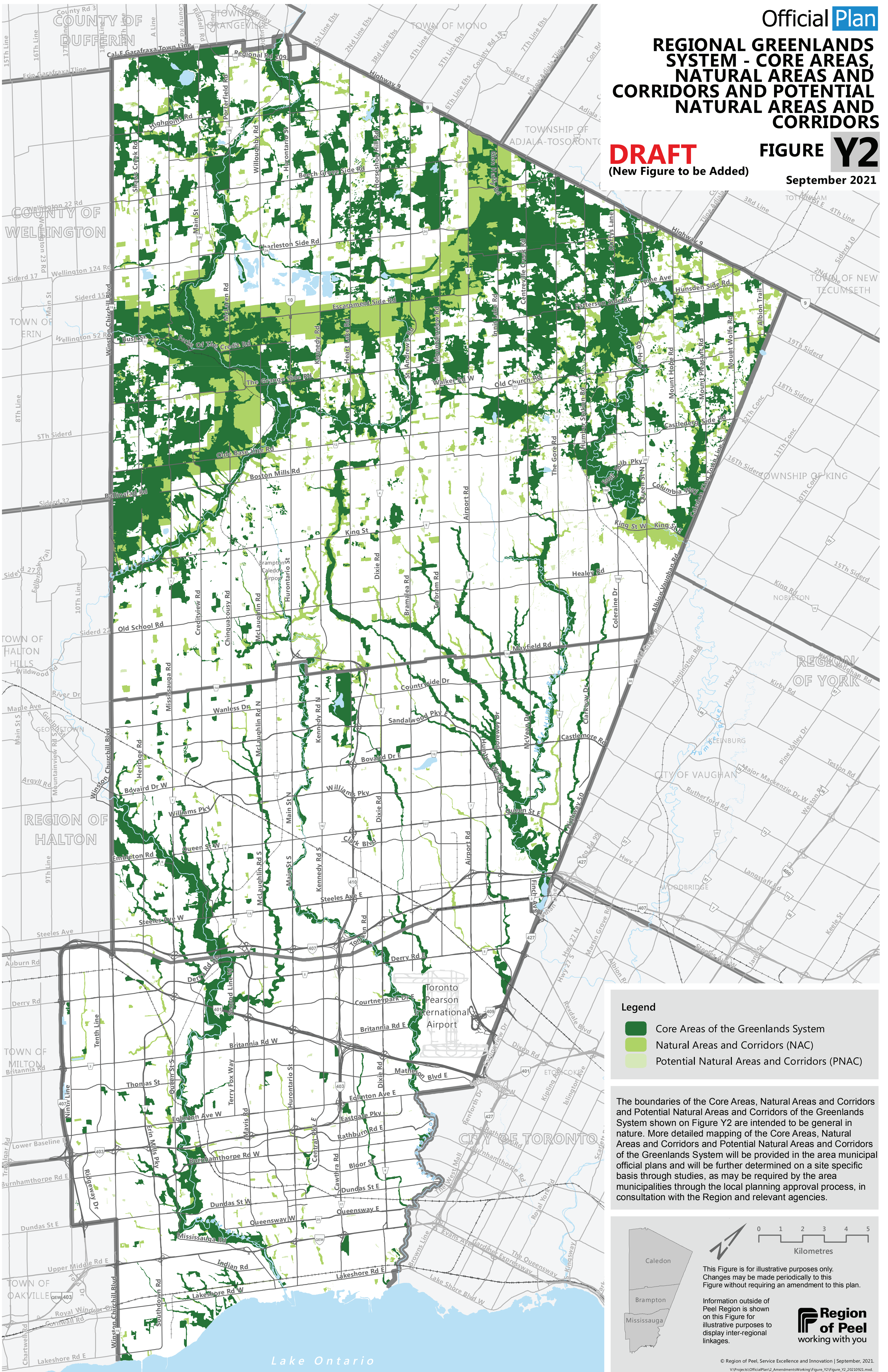


# REGIONAL GREENLANDS SYSTEM - CORE AREAS, NATURAL AREAS AND CORRIDORS AND POTENTIAL NATURAL AREAS AND CORRIDORS

**DRAFT**  
(New Figure to be Added)

**FIGURE Y2**

September 2021



**Legend**

- Core Areas of the Greenlands System
- Natural Areas and Corridors (NAC)
- Potential Natural Areas and Corridors (PNAC)

The boundaries of the Core Areas, Natural Areas and Corridors and Potential Natural Areas and Corridors of the Greenlands System shown on Figure Y2 are intended to be general in nature. More detailed mapping of the Core Areas, Natural Areas and Corridors and Potential Natural Areas and Corridors of the Greenlands System will be provided in the area municipal official plans and will be further determined on a site specific basis through studies, as may be required by the area municipalities through the local planning approval process, in consultation with the Region and relevant agencies.

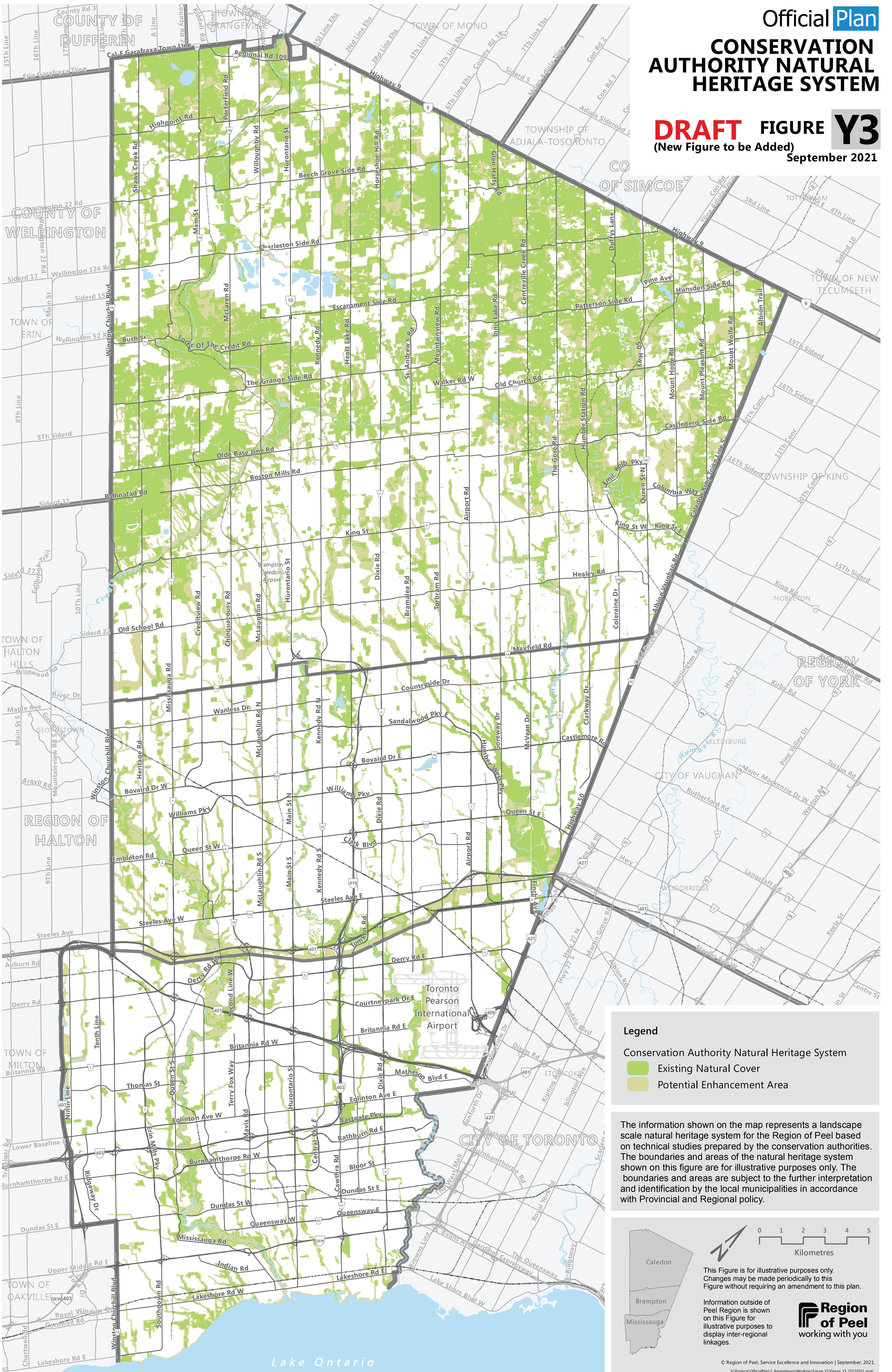
This Figure is for illustrative purposes only. Changes may be made periodically to this Figure without requiring an amendment to this plan.

Information outside of Peel Region is shown on this Figure for illustrative purposes to display inter-regional linkages.

**Region of Peel**  
working with you

Official Plan  
**CONSERVATION  
 AUTHORITY NATURAL  
 HERITAGE SYSTEM**

**DRAFT** FIGURE **Y3**  
 (New Figure to be Added)  
 September 2021



**Legend**

- Conservation Authority Natural Heritage System
- Existing Natural Cover
- Potential Enhancement Area

The information shown on the map represents a landscape scale natural heritage system for the Region of Peel based on technical studies prepared by the conservation authorities. The boundaries and areas of the natural heritage system shown on this figure are for illustrative purposes only. The boundaries and areas are subject to the further interpretation and identification by the local municipalities in accordance with Provincial and Regional policy.

0 1 2 3 4 5  
 Kilometres

This Figure is for illustrative purposes only. Changes may be made periodically to this Figure without requiring an amendment to this plan.

Information outside of Peel Region is shown on this Figure for illustrative purposes to display inter-regional linkages.

**Region of Peel**  
 working with you