

Climate Change



What is climate change?

Climate change can be defined as any change in climate over time, due to natural changes or as a result of human activity.

What is the Region doing?

- Increasing intensification and density through mixed-use and transit supportive development
- Reducing greenhouse gas (GHG) emissions and other pollutants through sustainable and active transportation
- Protecting, restoring and enhancing Peel's natural systems and water resources
- Promoting energy efficiency and conservation, including green development standards
- Identifying and protecting Prime Agricultural Lands

Why are climate change policies important?

- Rising GHG emissions and changing weather patterns will have a significant impact on human and natural systems
- Peel Region is expected to be impacted by rising temperatures, more extreme heat days, increased frequency and intensity of storms, and higher risks of flooding
- This will affect existing ecosystems, infrastructure, the built environment, human health, agriculture and the local economy

Regional Official Plan policies will...

- Implement provincial policy direction to reduce GHG emissions and prepare for the impacts of a changing climate
- Recognize that land-use planning can play a significant role in how the Region can mitigate and adapt to climate change
- Incorporate climate change policies into the Regional Official Plan to help develop sustainable, resilient communities



How can I stay involved?

Follow [@regionofpeel](https://twitter.com/regionofpeel) twitter page or request notification at planpeel@peelregion.ca

peelregion.ca/officialplan/review/

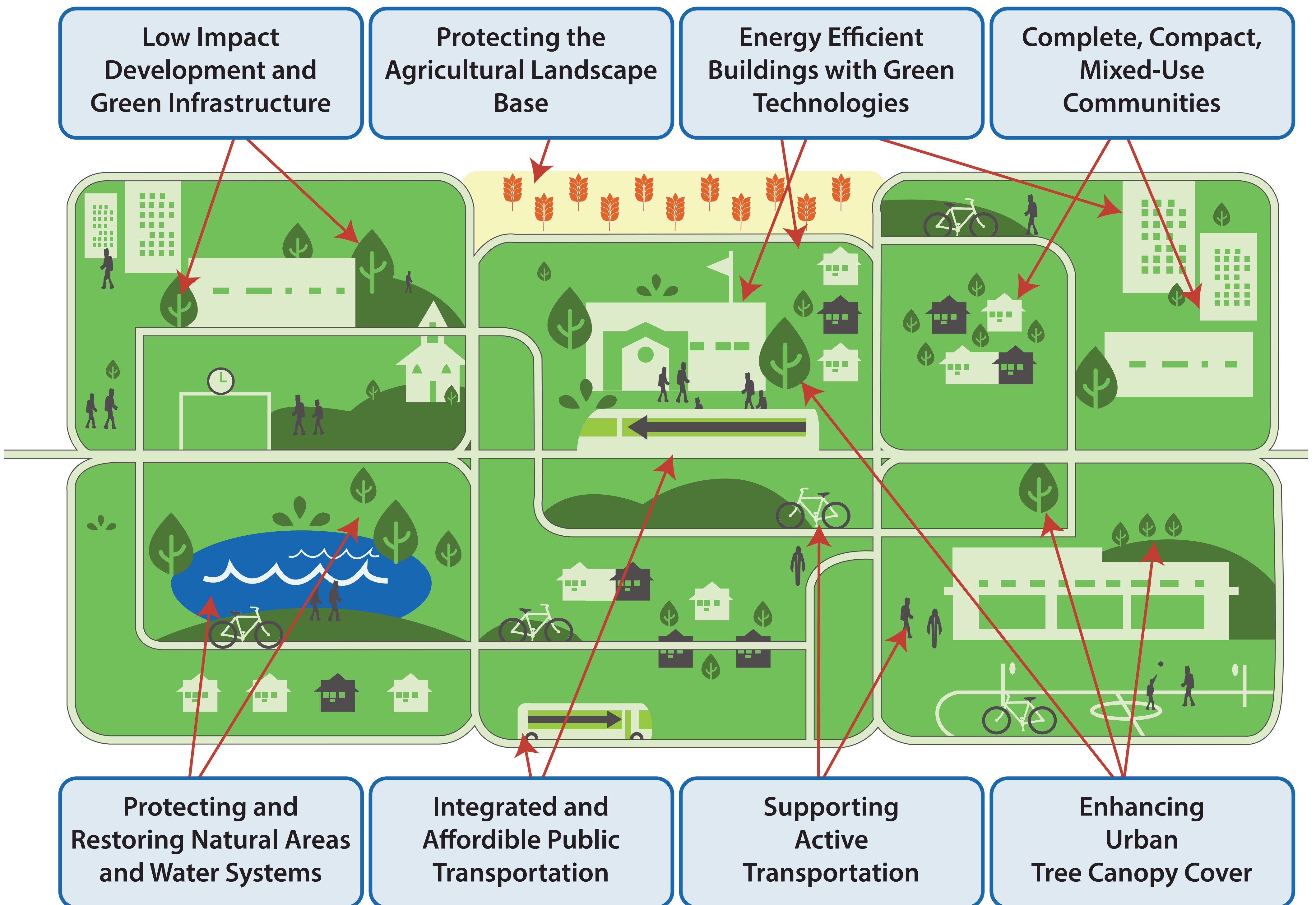
Climate Change



How are climate change policies formed?

Regional studies on municipal risks and Provincial policy requirements related to climate change provide a framework to add or strengthen existing policies in the Regional Official Plan to enhance the Region's ability to address the predicted impacts of climate change.

The integration of key land use planning policies will assist the Region in reducing GHG emissions and achieve a healthy and sustainable community, which are essential to building resilience to the impacts of climate change.



How can I stay involved?

Follow @regionofpeel twitter page or request notification at planpeel@peelregion.ca

peelregion.ca/officialplan/review/