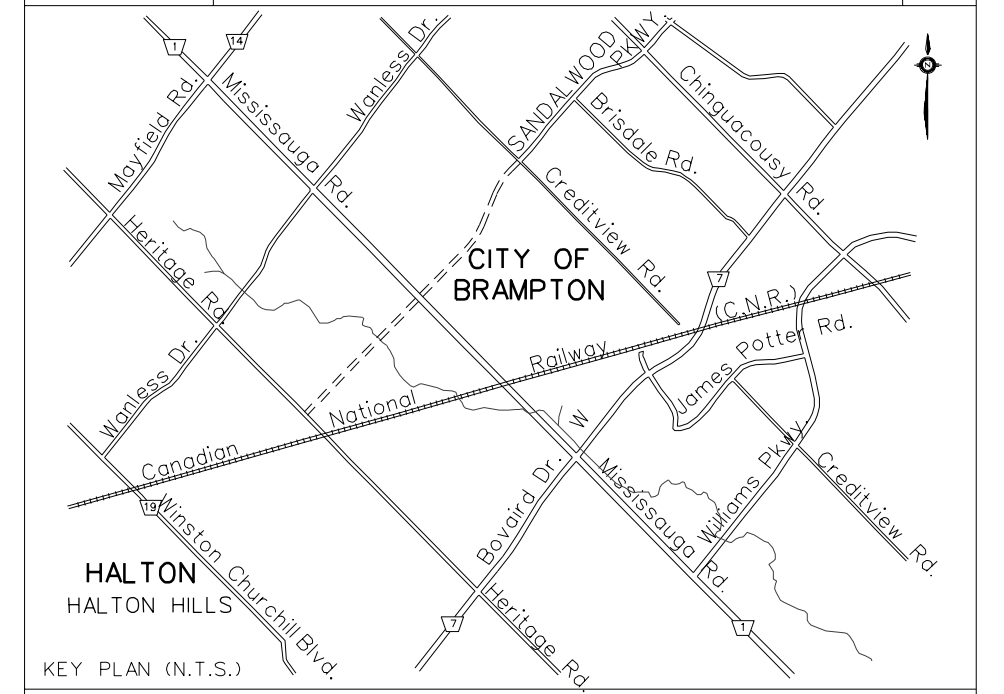


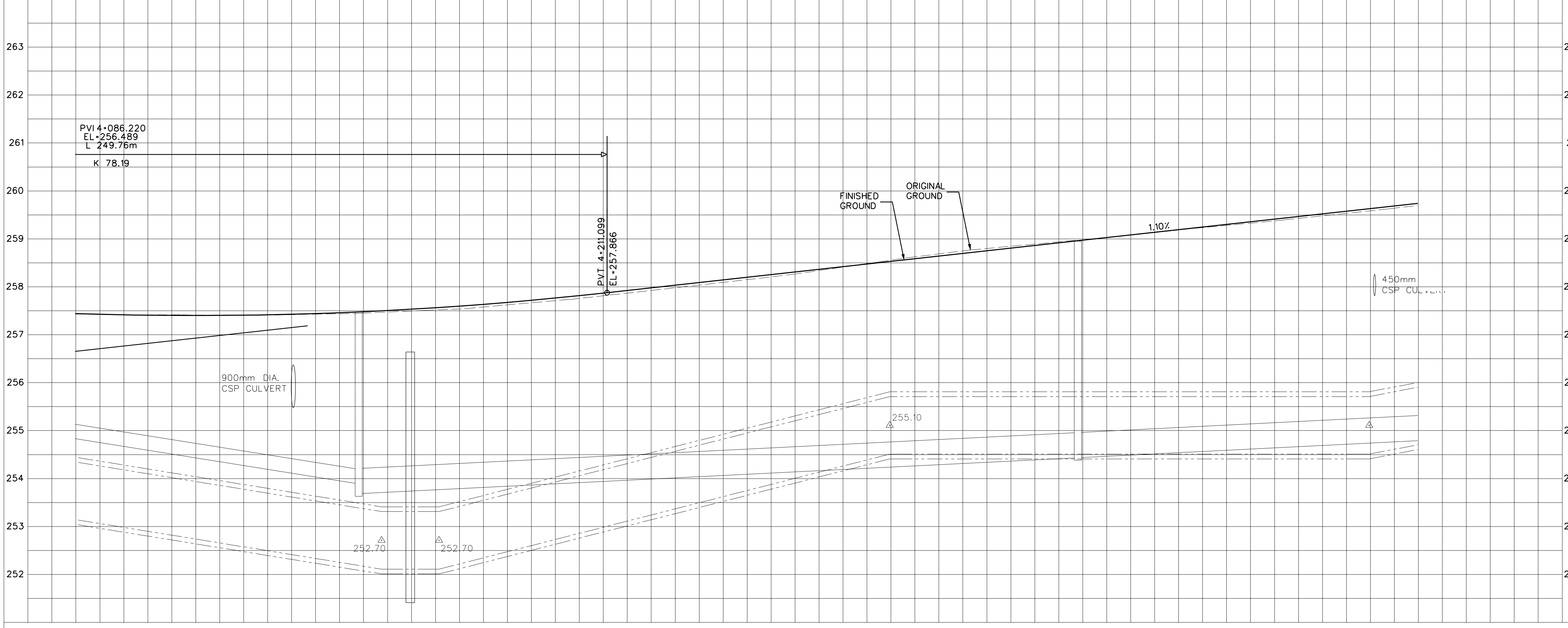
SERVICE DATA					
SERVICE	DATE	INIT.	SERVICE	DATE	INIT.
SAN SEWERS			GAS MAINS		
STORM SEWERS			BELL U/G CABLE		
WATER MAINS			HYDRO U/G CABLE		
TRANSIT			ONT. HYDRO		
PARKS & REC.			CTV		
ONT. CLEAN WATER					



HALTON
 HALTON HILLS
 KEY PLAN (N.T.S.)



AECOM CANADA Ltd.
 300 TOWN CENTRE BLVD., MARKHAM,
 ONTARIO, CANADA L3R 5Z6
 T905.477.8700 F905.477.1456



General Notes
 - - All Driveways ASPHALT Unless Otherwise Noted.
 - - All Service Locations Are Approximate And Must Be Located Accurately In The Field.
 @ Denotes Building - Not Located
 ⊗ Denotes Building Located
 Type 'D' Bedding Unless Otherwise Noted (SAN)

B.M. No. Elev.
 The Contractor is Responsible For Locating And Protecting All Existing Utilities Prior To And During Construction Location of Existing Utilities Approximate Only, To Be Verified In Field By Contractor.

Designed by: _____
 Approved by: _____

NOTICE TO CONTRACTOR
 48 HOURS PRIOR TO COMMENCING WORK NOTIFY THE FOLLOWING:
 THE REGIONAL MUNICIPALITY OF PEEL
 CITY OF MISSISSAUGA WORKS DEPT.
 CITY OF BRAMPTON WORKS DEPT.
 TOWN OF CALEDON WORKS DEPT.
 BELL TELEPHONE COMPANY
 CONSUMERS GAS COMPANY
 MINISTRY OF TRANSPORTATION
 ONTARIO CLEAN WATER AGENCY
 HYDRO ELECTRIC POWER COMM. OF ONTARIO
 HYDRO ELECTRIC COMM. CITY OF MISSISSAUGA
 HYDRO ELECTRIC COMM. CITY OF BRAMPTON
 CABLE TELEVISION

10m 0 10 20 30m HORIZONTAL SCALE
 1m 0 1 2 3m VERTICAL SCALE



MISSISSAUGA ROAD
 (FROM BOVAIRD DR. TO MAYFIELD RD.)
 PLAN AND PROFILE

Sta. 4+100.00 To Sta. 4+380.00

257.431	257.393	257.406	257.470	257.585	257.752	257.965	258.185	258.406	258.626	258.847	259.067	259.288	259.509	259.729	PR. ROAD ELEV.	Lots	Area	Project No.	105163
257.43	257.39	257.41	257.47	257.59	257.75	257.96	258.19	258.41	258.63	258.85	259.07	259.29	259.51	259.73	EX. ROAD ELEV.	Checked by	P.C.	Drawn by	V.M.
4+100	4+120	4+140	4+160	4+180	4+200	4+220	4+240	4+260	4+280	4+300	4+320	4+340	4+360	4+380	ROAD CHAINAGE	Date	NOV 2012	Sheet	12 of 19