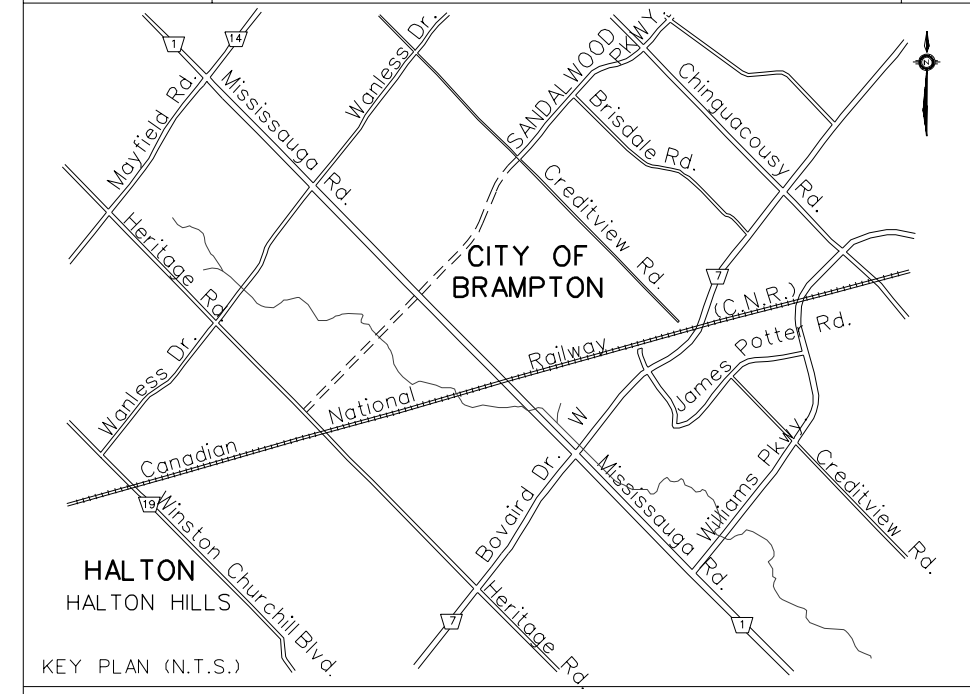


MATCH LINE - STA 3+820
SEE DRAWING PP11

MATCH LINE - STA 3+540
SEE DRAWING PPO9

SERVICE DATA					
SERVICE	DATE	INIT.	SERVICE	DATE	INIT.
SAN SEWERS			GAS MAINS		
STORM SEWERS			BELL U/G CABLE		
WATER MAINS			HYDRO U/G CABLE		
TRANSIT			ONT. HYDRO		
PARKS & REC.			CTV		
ONT. CLEAN WATER					

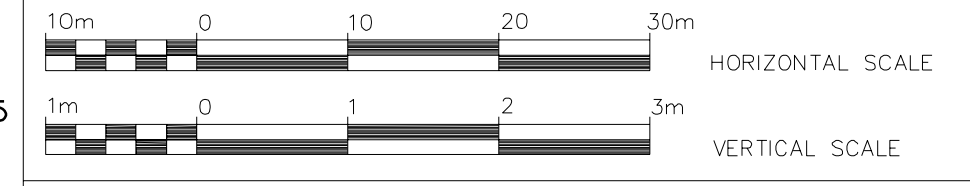


AECOM
 AECOM CANADA Ltd.
 300 TOWN CENTRE BLVD., MARKHAM,
 ONTARIO, CANADA L3R 5Z6
 T905.477.8700 F905.477.1456

General Notes
 - - All Driveways ASPHALT Unless Otherwise Noted.
 - - All Service Locations Are Approximate And Must Be Located Accurately In The Field
 ⊙ Denotes Building - Not Located
 ⊙ Denotes Building Located
 Type 'B' Bedding Unless Otherwise Noted (SAN)
 B.M. No. Elev.
 The Contractor Is Responsible For Locating And Protecting All Existing Utilities Prior To And During Construction Location of Existing Utilities Approximate Only, To Be Verified In Field By Contractor.

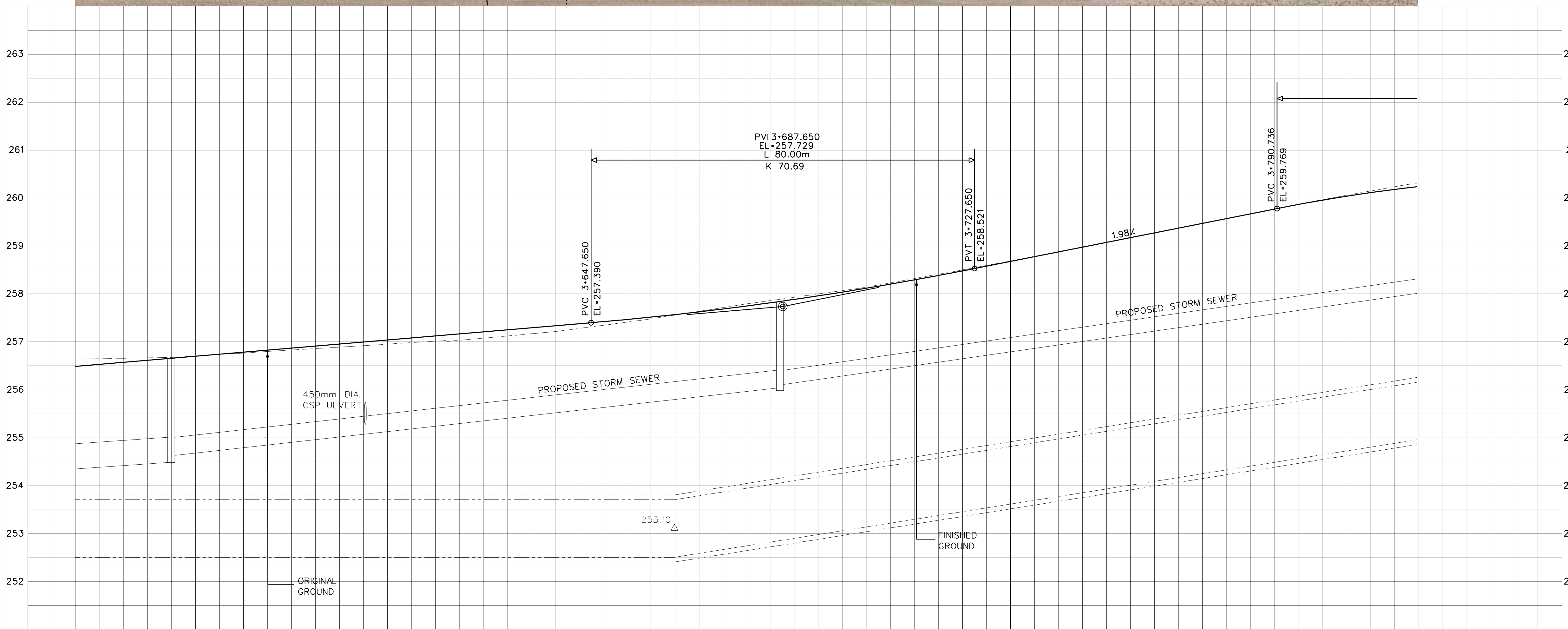
Designed by _____ Chkd _____
 Approved by _____

NOTICE TO CONTRACTOR
 48 HOURS PRIOR TO COMMENCING WORK NOTIFY THE FOLLOWING
 THE REGIONAL MUNICIPALITY OF PEEL
 CITY OF MISSISSAUGA WORKS DEPT.
 CITY OF BRAMPTON WORKS DEPT.
 TOWN OF CALEDON WORKS DEPT.
 BELL TELEPHONE COMPANY
 CONSUMERS GAS COMPANY
 MINISTRY OF TRANSPORTATION
 ONTARIO CLEAN WATER AGENCY
 HYDRO ELECTRIC POWER COMM. OF ONTARIO
 HYDRO ELECTRIC COMM. CITY OF MISSISSAUGA
 HYDRO ELECTRIC COMM. CITY OF BRAMPTON
 CABLE TELEVISION



MISSISSAUGA ROAD
 (FROM BOVARD DR. TO MAYFIELD RD.)
 PLAN AND PROFILE

Sta. 3+540.00	To Sta. 3+820.00	PR. ROAD ELEV.	Lots	Area	Project No.
		EX. ROAD ELEV.	Checked by P.C.	Drawn by V.M.	105163
		ROAD CHAINAGE	Date NOV 2012	Sheet 10 of 19	Plan No. PP10



256.478	256.647	256.817	256.986	257.156	257.325	257.505	257.738	258.028	258.373	258.765	259.161	259.557	259.940	260.226	PR. ROAD ELEV.
256.66	256.81	256.95	257.10	257.24	257.39	257.56	257.79	258.06	258.39	258.77	259.16	259.56	259.94	260.23	EX. ROAD ELEV.
3+540	3+560	3+580	3+600	3+620	3+640	3+660	3+680	3+700	3+720	3+740	3+760	3+780	3+800	3+820	ROAD CHAINAGE