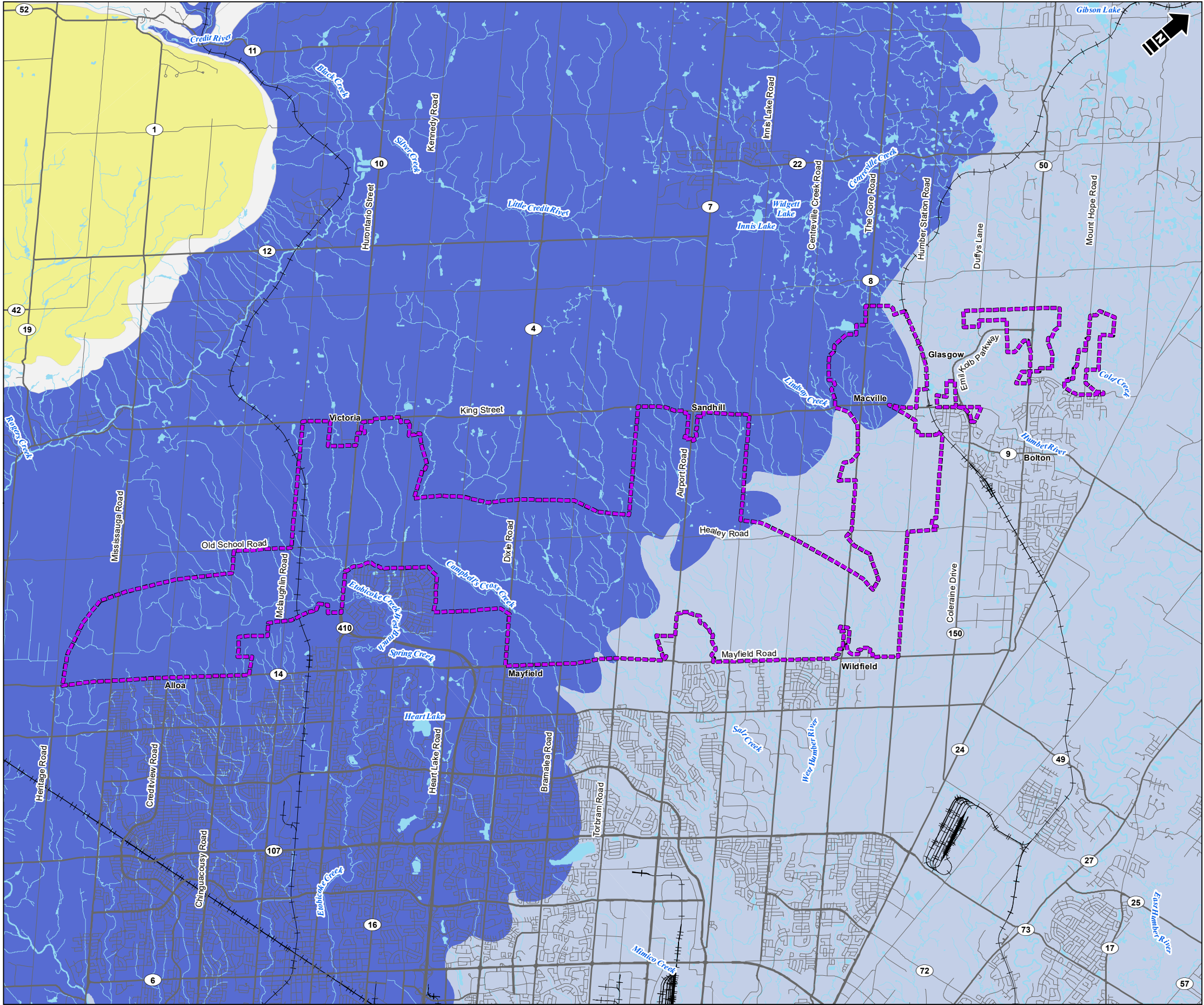
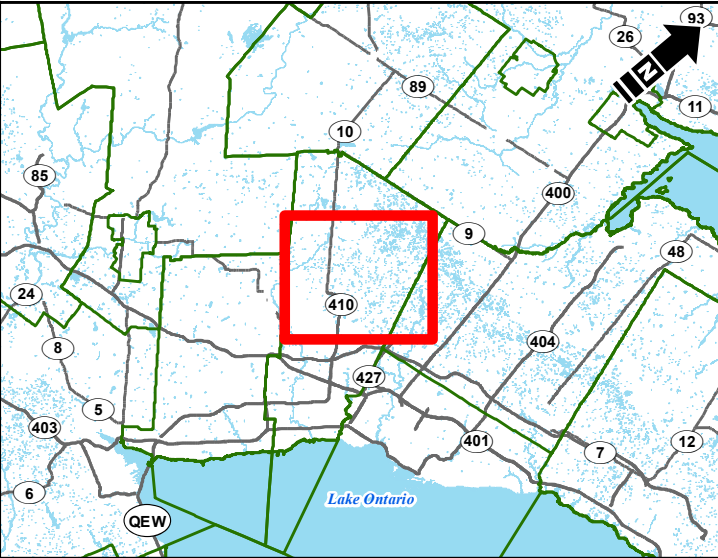


I:\WoodEnvironment\28981\FiguresAndTables\VS\2020\Report\Drawing\GW-2\_Bedrock\_Geology.mxd - Titled\_L - 28-Jul-20, 02:03 PM - Image4 - TID005



- Legend**
- Focus Study Area
  - Municipal Boundary
  - Water Body
  - Watercourse
  - Railway
  - Highway
  - Road
- Bedrock Geology**
- Amabel Fm - Dolostone
  - Clinton-Cataract Fm - Shale, Dolostone, Sandstone
  - Georgian Bay Fm - Shale, Limestone
  - Queenston Fm - Shale



Reference: Contains information licensed under the Open Government Licence –  
Ontario  
Bedrock Geology: Armstrong, D.K. and Dodge, J.E.P. 2007. Paleozoic geology of  
southern Ontario; Ontario Geological Survey, Miscellaneous Release—Data 219

1:100,000  
0 1 2  
Kilometers  
NAD 1983 UTM Zone 17N

**Matrix Solutions Inc.**  
ENVIRONMENT & ENGINEERING

Region of Peel  
Settlement Area Boundary Expansion Scoped Subwatershed Study

**DRAFT**  
**Bedrock Geology**

Date: July 2020 Project: 28981 Submitter: J. Melchin Reviewer: B. Blackport

Disclaimer: The information contained herein may be compiled from numerous third party materials that are subject to periodic change without prior notification. While every effort has been made by Matrix Solutions Inc. to ensure the accuracy of the information presented at the time of publication, Matrix Solutions Inc. assumes no liability for any errors, omissions, or inaccuracies in the third party material.

Drawing  
**GW-2**