

APPENDIX

O

**STRUCTURAL
ASSESSMENT**



APPENDIX

O-1 STRUCTURAL ASSESSMENT - ARTERIAL A2 - S1

GENERAL NOTES:

CLASS OF CONCRETE

- ALL CONCRETE UNLESS OTHERWISE SPECIFIED 30MPa

REINFORCING STEEL

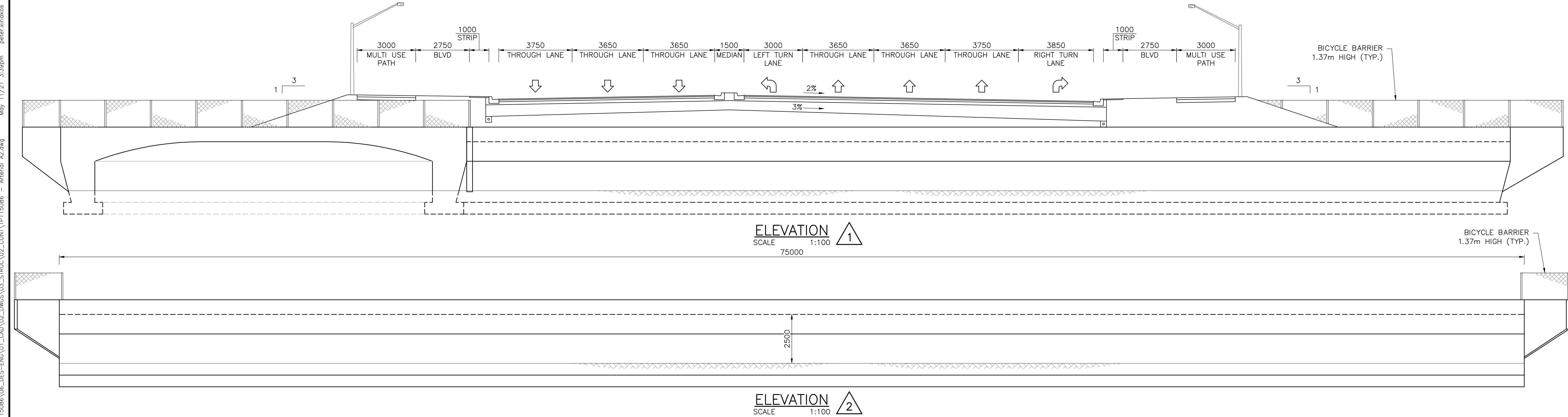
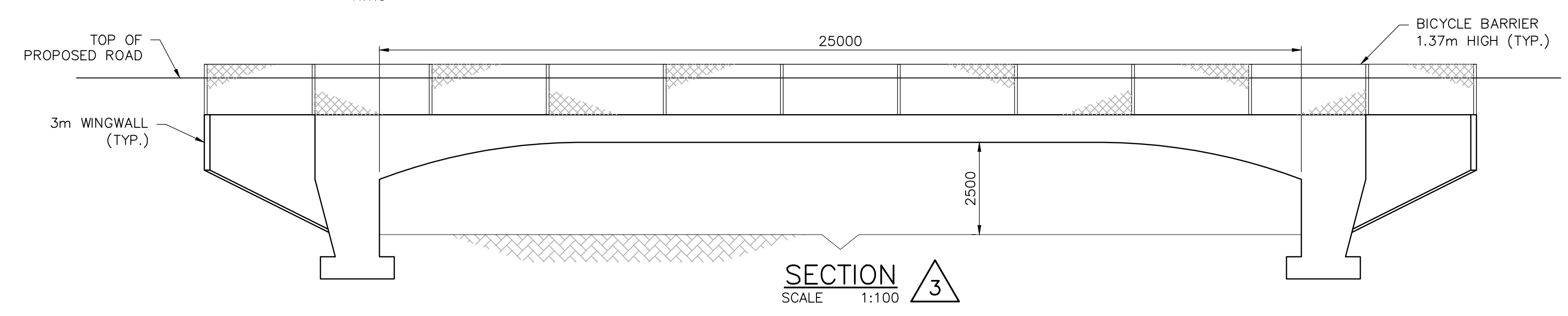
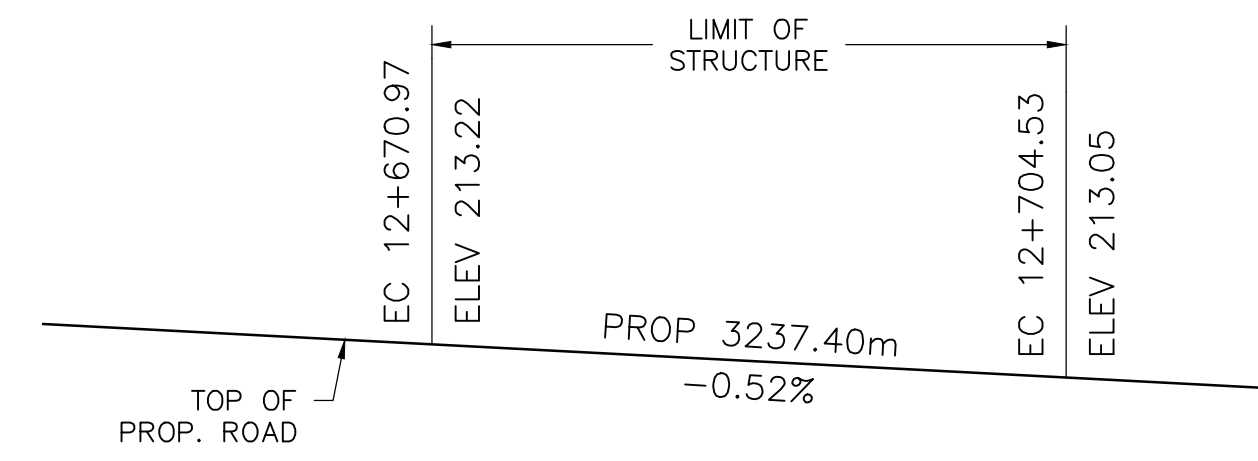
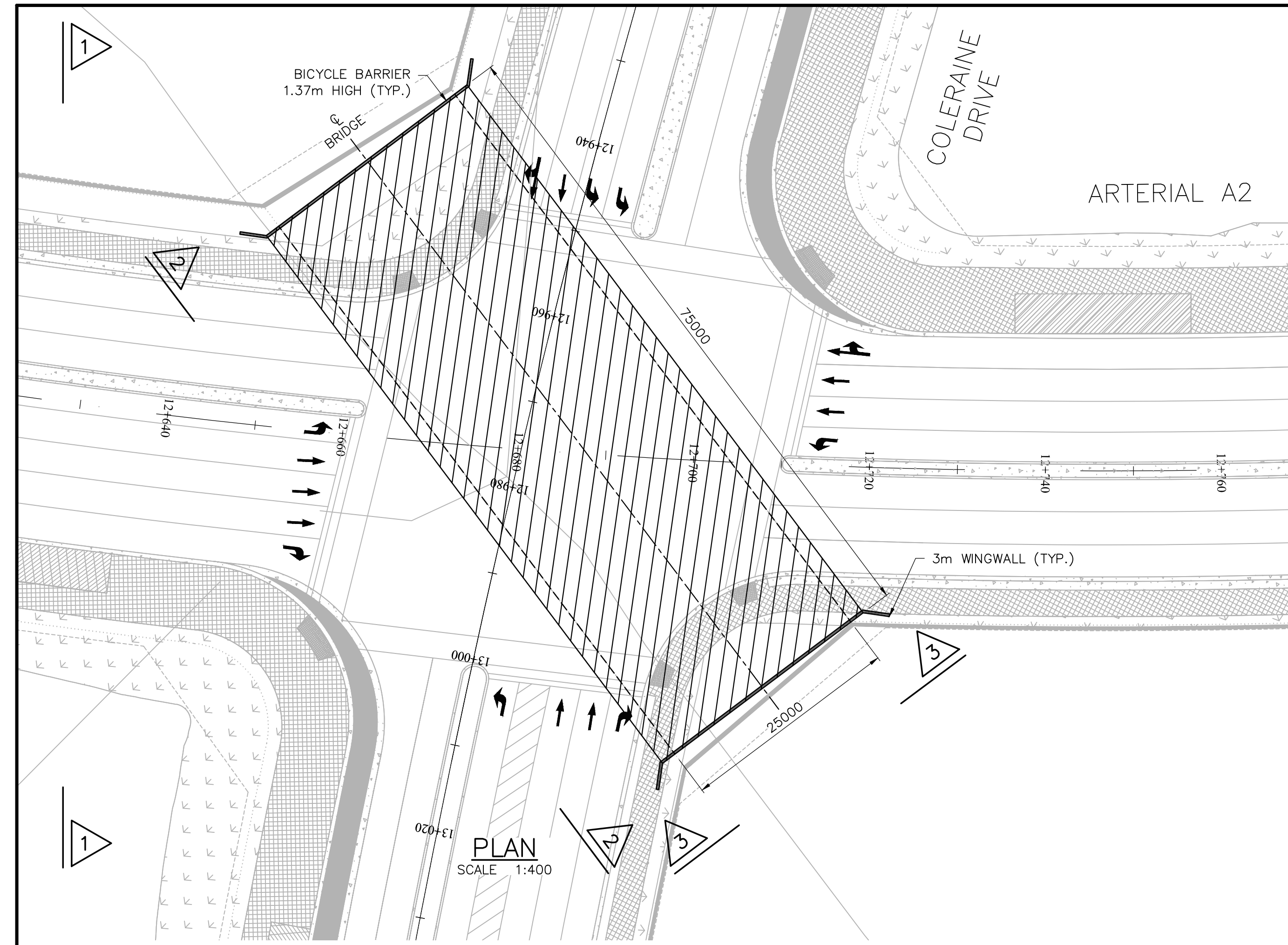
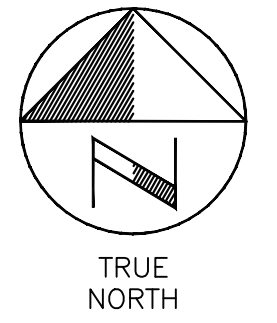
- FOOTINGS 100±25mm
- ABUTMENT & WINGWALLS 80±20mm
- FRONT FACE 70±20mm
- BACK FACE 80±20mm
- PIER 70±20mm
- DECK TOP 50±10mm
- BOTTOM 70±20mm
- REMAINDER UNLESS OTHERWISE NOTED

CLEAR COVER TO REINFORCING STEEL

- REINFORCING STEEL SHALL BE GRADE 400W UNLESS OTHERWISE SPECIFIED. BARS MARKED WITH SUFFIX 'C' DENOTES COATED BARS.

CONSTRUCTION NOTES

- BACKFILL SHALL BE PLACED SIMULTANEOUSLY BEHIND BOTH ABUTMENTS KEEPING THE HEIGHT OF THE BACKFILL APPROXIMATELY THE SAME. AT NO TIME SHALL THE DIFFERENCE IN ELEVATION BE GREATER THAN 500mm



No.	DATE	BY	REVISIONS	MAN	CAD

APPROVALS	
Municipal	Regional
Engineer	Engineer
Date	Date

Design	N.T.	Checked	K.A.
Drawn	P.K.	Checked	
Scale	AS SHOWN		
Date	APRIL 2021		

CITY OF BRAMPTON
COLERAINE DRIVE
CROSSING STRUCTURE

FOR INFORMATION ONLY

Contract No.	XX - XX
Consultant File No.	TP115086
Drawing No.	
SHEET	of S1

AutoCAD drawing: P:\Work\TP115086\06_DES-ENG\01_CAD\02_DWG\03_STRUCT\02_CON\TP115086 - Arterial A2.dwg
 May 11/21 3:39pm peter.kirkos