

**TYPICAL UNDERGROUND
CONDUIT DETAILS**

APPROVED BY

GK

STD. DWG. NUMBER

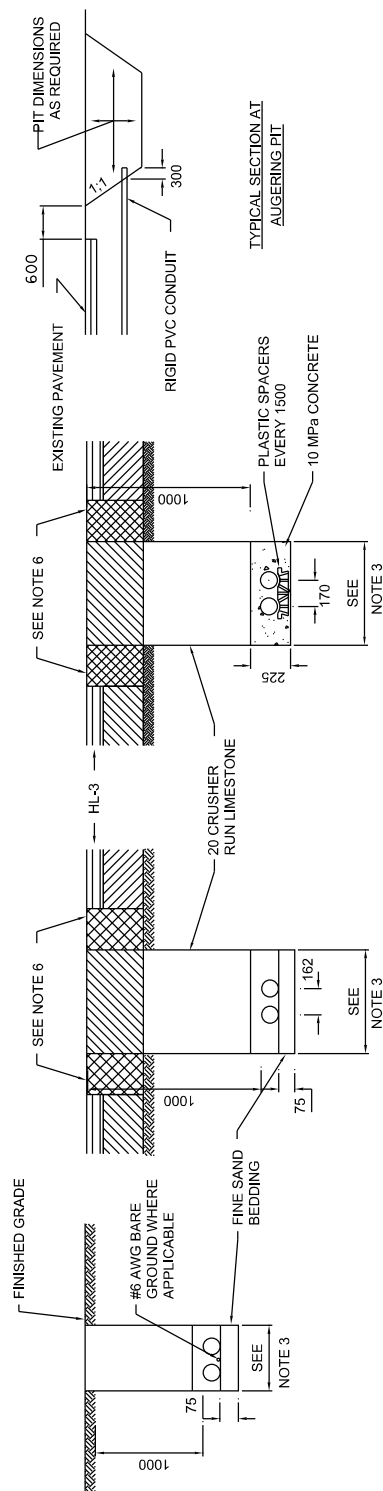
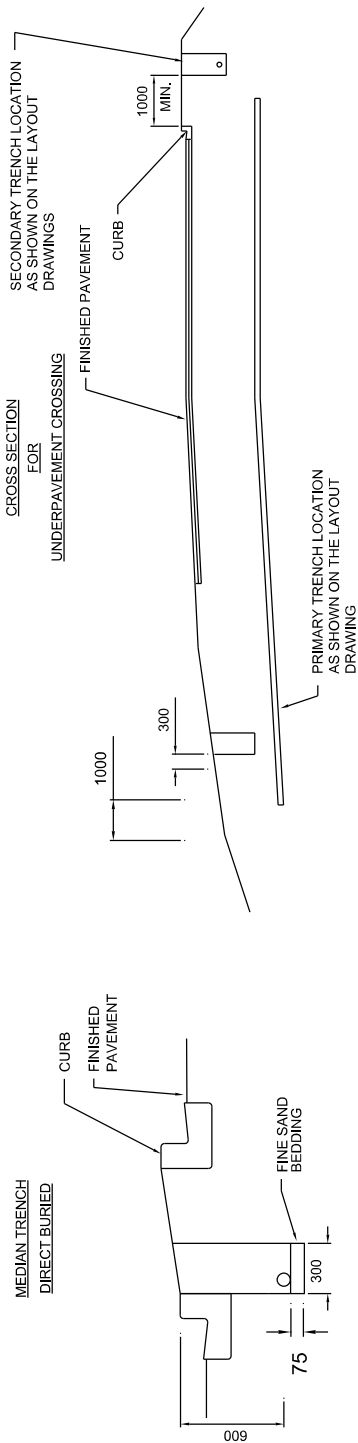
4-5-5

DRAWN BY

TSS SECTION

SCALE

N.T.S.



SECONDARY TRENCH
POLYETHYLENE PIPE
DIRECT BURIED

PRIMARY TRENCH
RIGID PVC CONDUIT
DIRECT BURIED

PRIMARY TRENCH
PVC DUCT
CONCRETE ENCASED

NOTES:

1. ALL WORK WITHIN THE RIGHT-OF-WAY SHALL CONFORM TO THE CONDITIONS STIPULATED IN THE REGION'S ROAD OCCUPANCY PERMIT.
2. FOR CONNECTION TO ELECTRICAL MAINTENANCE CHAMBERS SEE APPLICABLE OPS DRAWINGS.
3. TRENCHES SHALL BE 300 WIDE AND 1000 DEEP WITH VERTICAL WALLS. SAW CUT ASPHALT FULL DEPTH TO GRANULAR BASE PRIOR TO REMOVAL.
4. IN STONEY OR ROCKY GROUND, INSTALL SAND BEDDING AS SHOWN.
5. ALL RIGID CONDUITS OR DUCTS SHALL HAVE A 60 YELLOW NYLON FISH ROPE PULLED WITH CABLES OR LEFT IN SPARE DUCTS FOR FUTURE USE.
6. PRIOR TO BACKFILLING TRENCH, REMOVE ASPHALT FULL DEPTH BY SAW CUTTING ADDITIONAL 300 WIDTH ON EACH SIDE OF THE TRENCH AND RECOMPACTING DISTURBED AREA.
7. CONDUIT SIZE AND TYPE AS PER LAYOUT DRAWINGS AND DOCUMENTS.

ALL DIMENSIONS IN MILLIMETRES
UNLESS OTHERWISE NOTED