
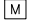

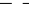




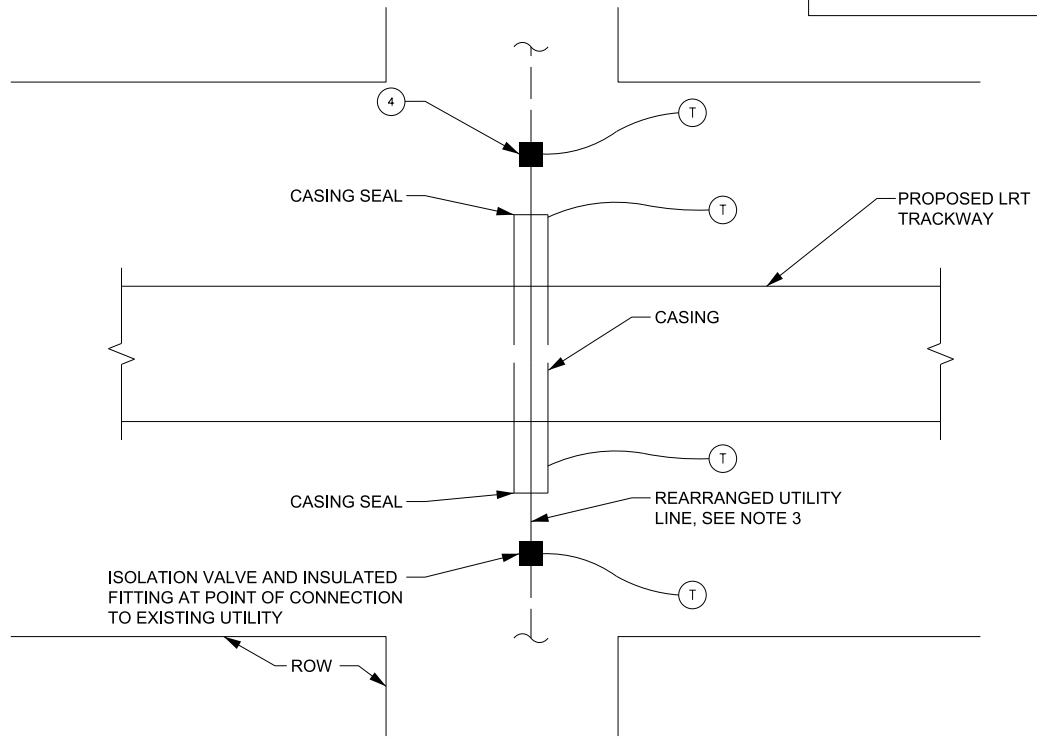


LEGEND	
	ISOLATING FITTING
	METALLIC WATER SERVICE
	TEST STATION
	EXISTING UTILITY
	HYDRANT
	CONNECTION TO EXISTING
	NEW UTILITY
	ABANDON



NOTE

1. RETROFIT OF JOINT BONDING NOT REQUIRED ON EXISTING WATER MAIN PARALLELING PROPOSED LRT.
2. USE NON-METALLIC MATERIALS FOR CASING AND UTILITY RE-ARRANGEMENT IF PRACTICAL.
3. BOND ALL MECHANICAL JOINTS OF NEW METALLIC UTILITY REARRANGEMENT.
4. INSTALL INSULATING JOINTS TO ELECTRICALLY ISOLATE REARRANGEMENT FROM EXISTING PIPE.
5. INSTALL CASING INSULATORS TO ISOLATE UTILITY FROM METALLIC CASINGS.
6. SEE DRAWING NUMBER 3-1-1 FOR PIPING MATERIAL SELECTION.
7. BONDING AND REPLACEMENT SHALL EXTEND 30m AT EACH INTERSECTION BEYOND LIMIT OF RAIL.



**PUBLIC WORKS
STANDARD DRAWING**

REV. DATE: FEBRUARY 2015

APPROVED BY

WT

DRAWN BY

AECOM

**TYPICAL ARRANGEMENT FOR
PIPES CROSSING LRT**

STD. DWG. NUMBER

3-1-3

SCALE

N.T.S.