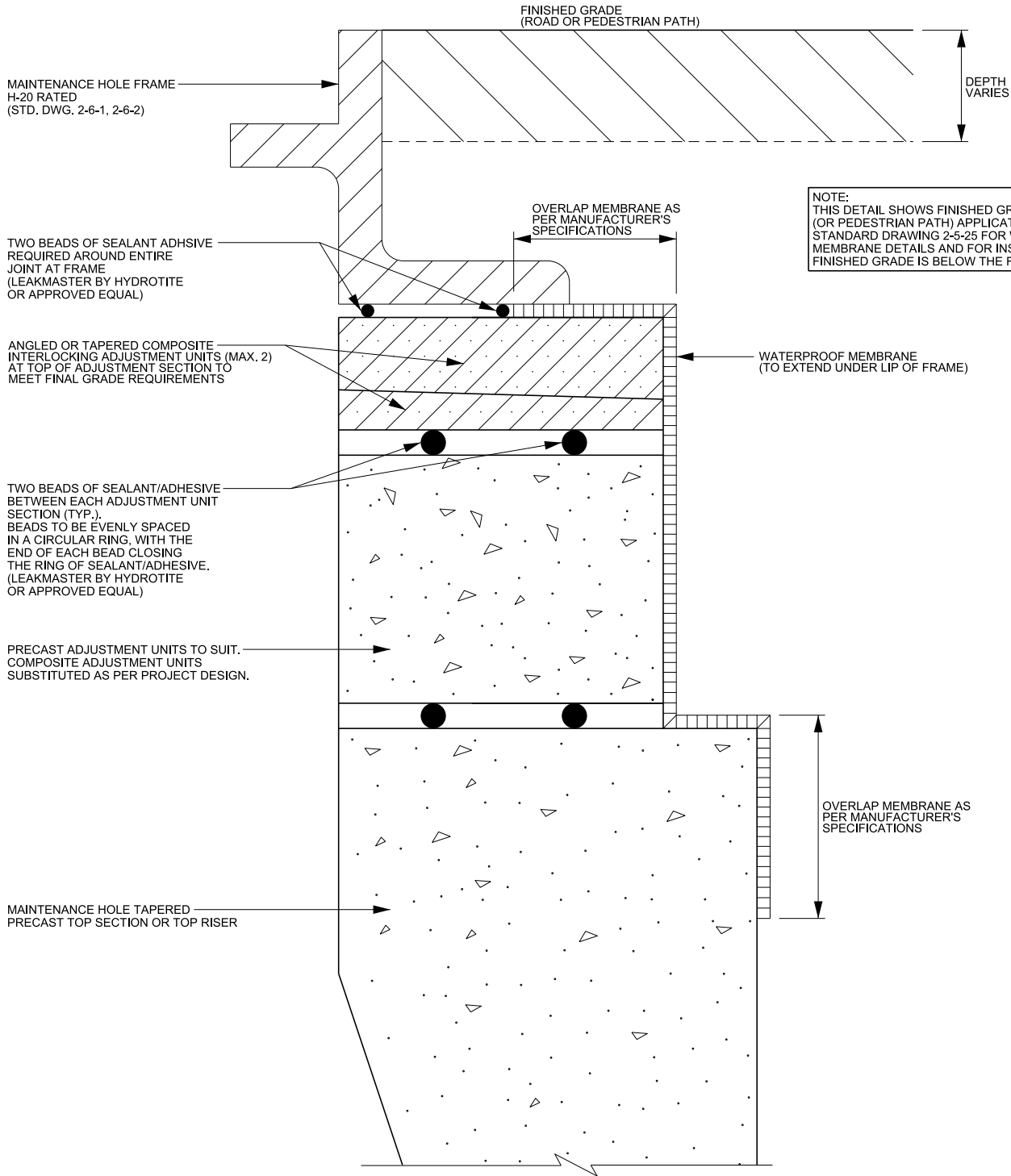


**REGION APPROVAL FOR ANCHORING FRAME AND COVER SYSTEM REQUIRED PRIOR TO CONSTRUCTION**



**NOTE:**  
THIS DETAIL SHOWS FINISHED GRADE FOR ROAD (OR PEDESTRIAN PATH) APPLICATIONS. REFER TO STANDARD DRAWING 2-5-25 FOR WATERPROOF MEMBRANE DETAILS AND FOR INSTALLATION WHERE FINISHED GRADE IS BELOW THE FRAME AND COVER.

**NOTE**

1. REFER TO STANDARD DRAWING 2-5-1, 2-7-1 AND 2-8-1 FOR GENERAL NOTES PERTAINING TO PRECAST MAINTENANCE HOLES.
2. ANGLED OR TAPERED ADJUSTMENT UNITS (COMPOSITE) TO BE USED AT TOP OF ADJUSTMENT UNIT SECTION TO MEET FINAL GRADE REQUIREMENTS. USE OF SHIMS IS NOT PERMITTED TO MEET FINAL GRADE REQUIREMENTS.

NEW CONSTRUCTION		REHABILITATION
FULL EXCAVATION	PARTIAL EXCAVATION	NO EXCAVATION
INTERNAL		EXTERNAL
ROW	FLOOD PLAIN	EASEMENT
///	H2S	SECURITY



**PUBLIC WORKS  
STANDARD DRAWING**

**REV. DATE: NOVEMBER 2019**

**REVISION NUMBER: 1** FOR REVISION TRACKING REFER TO STD. DWG. 2-0-2

APPROVED BY A.P.	DRAWN BY AINLEY GROUP
---------------------	--------------------------

STD. DWG. NUMBER <b>2-6-7</b>	SCALE N.T.S.
----------------------------------	-----------------

**MAINTENANCE HOLE APPURTENANCES  
DETAIL OF ANCHORING METHOD  
FOR MAINTENANCE HOLE WITH ADHESIVE**