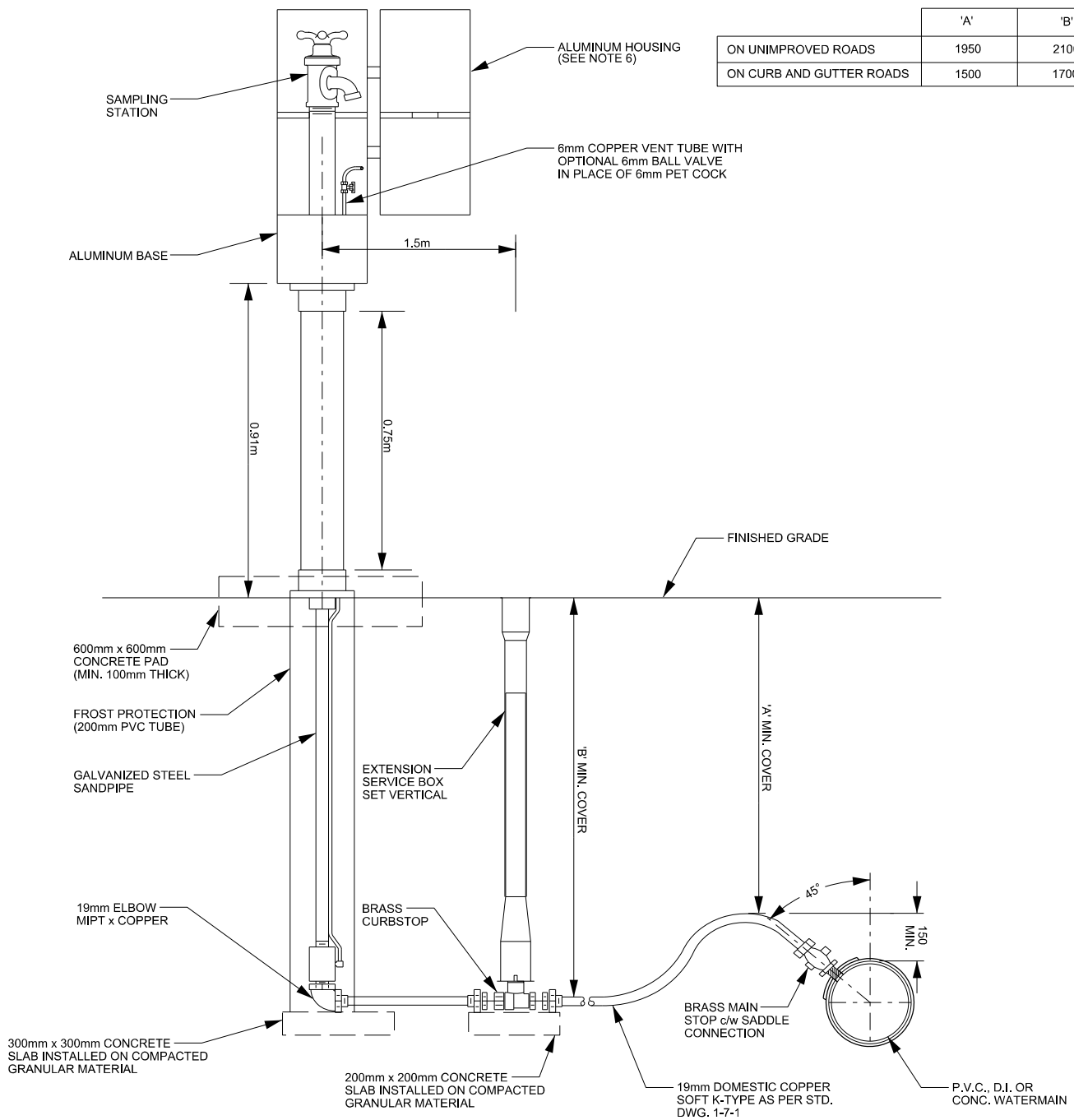


	'A'	'B'
ON UNIMPROVED ROADS	1950	2100
ON CURB AND GUTTER ROADS	1500	1700



NOTE

1. SAMPLING STATIONS SHALL BE FURNISHED WITH A 19mm FIP INLET, AND A (19mm HOSE OR UNTHREADED) NOZZLE.
2. ALL STATIONS SHALL BE ENCLOSED IN A LOCKABLE, NONREMOVABLE, ALUMINUM-CAST HOUSING
3. WHEN OPENED, THE STATION SHALL REQUIRE NO KEY FOR OPERATION, AND THE WATER WILL FLOW IN AN ALL BRASS WATERWAY
4. ALL WORKING PARTS WILL ALSO BE OF BRASS AND BE REMOVABLE FROM ABOVE GROUND WITH NO DIGGING. EXTERIOR PIPING SHALL BE GALVANIZED STEEL (BRASS PIPE ALSO AVAILABLE)
5. A COPPER VENT TUBE WILL ENABLE EACH STATION TO BE PUMPED FREE OF STANDING WATER TO PREVENT FREEZING AND TO MINIMIZE BACTERIA GROWTH.
6. ALUMINUM HOUSING TO HAVE THE REGION OF PEEL LOGO CAST DIRECTLY ON FRONT.



**PUBLIC WORKS
STANDARD DRAWING**

REV. DATE: NOVEMBER 2016

APPROVED BY

DRAWN BY

A.P.

AINLEY GROUP

**SAMPLING STATION
NORTH PEEL**

STD. DWG. NUMBER

SCALE

1-7-6A

N.T.S.