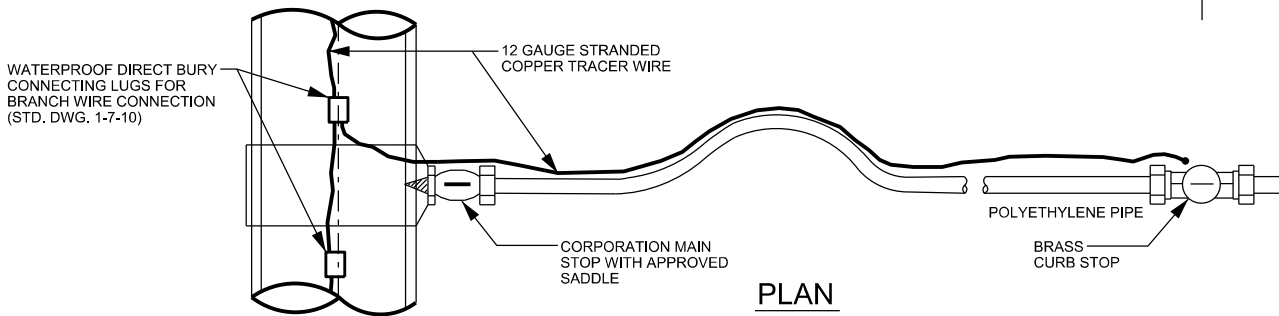
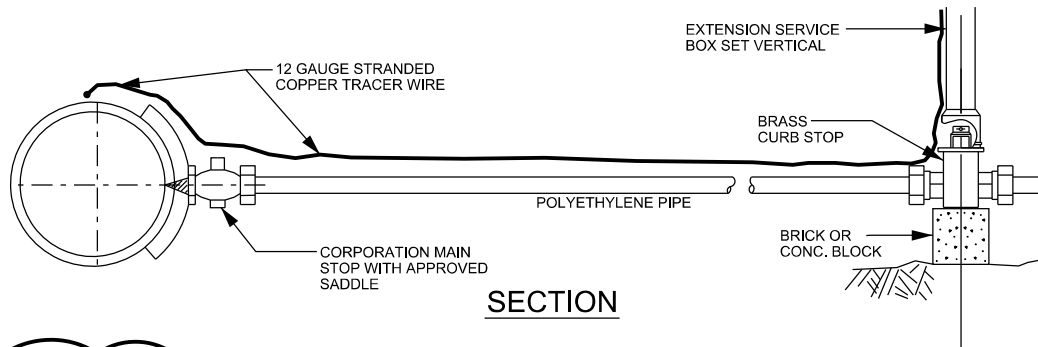
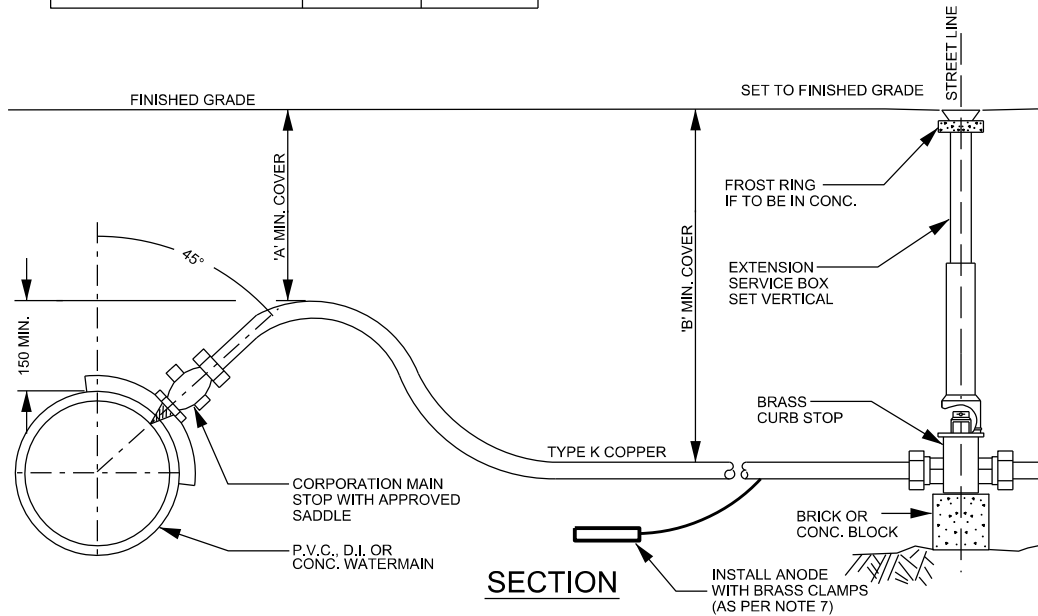


	'A'	'B'
ON UNIMPROVED ROADS	1950	2100
ON CURB AND GUTTER ROADS	1500	1700



NOTE

1. ALL SERVICES TO BE AT 90° TO THE WATERMAIN UNLESS OTHERWISE SPECIFIED.
2. WATER SERVICE TO BE A MIN. OF 1100mm UNDER THE BOTTOM OF DITCH.
3. SERVICE BOX TO BE SET TO FINISH GRADE.
4. NO DIRECT TAPPING OF PVC WATERMAINS. ALL CONNECTIONS TO PVC PIPE TO BE MADE USING AN APPROVED WIDE-BAND SERVICE SADDLE.
5. TRACER WIRE TO BE INSTALLED AS PER REGION STANDARDS.
6. ALL WATER SERVICE MATERIALS SHALL BE STORED IN ACCORDANCE WITH MANUFACTURER'S RECOMMENDATIONS.
7. ZINC ANODE (Z-12-24) TO BE INSTALLED 1000mm FROM CURB STOP AS PER OPSS 442.



**PUBLIC WORKS
STANDARD DRAWING**

REV. DATE: MAR. 2018

APPROVED BY

DRAWN BY

E.O.

AINLEY GROUP

STD. DWG. NUMBER

SCALE

1-7-1

N.T.S.

WATER SERVICE CONNECTION