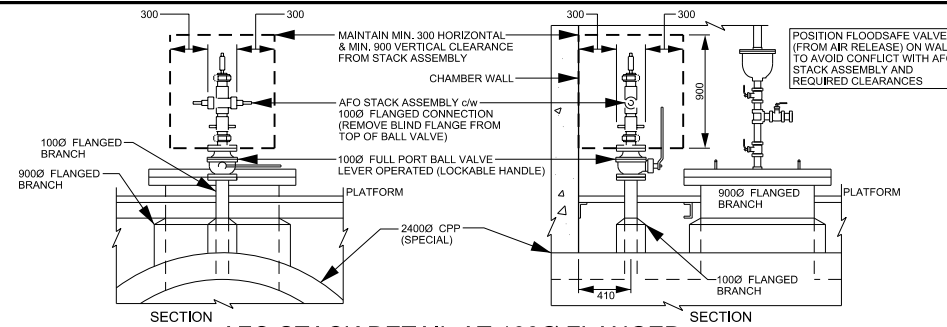
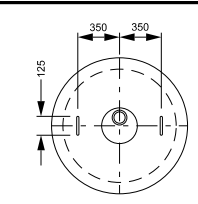


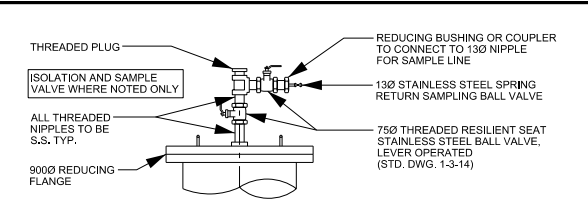
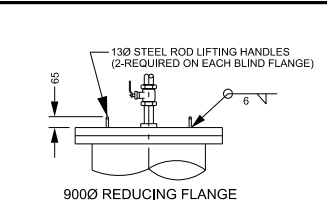
ALTERNATE ACCESS RISER AND COVER INSTALLATION FOR CHAMBERS LOCATED OFF PAVEMENT



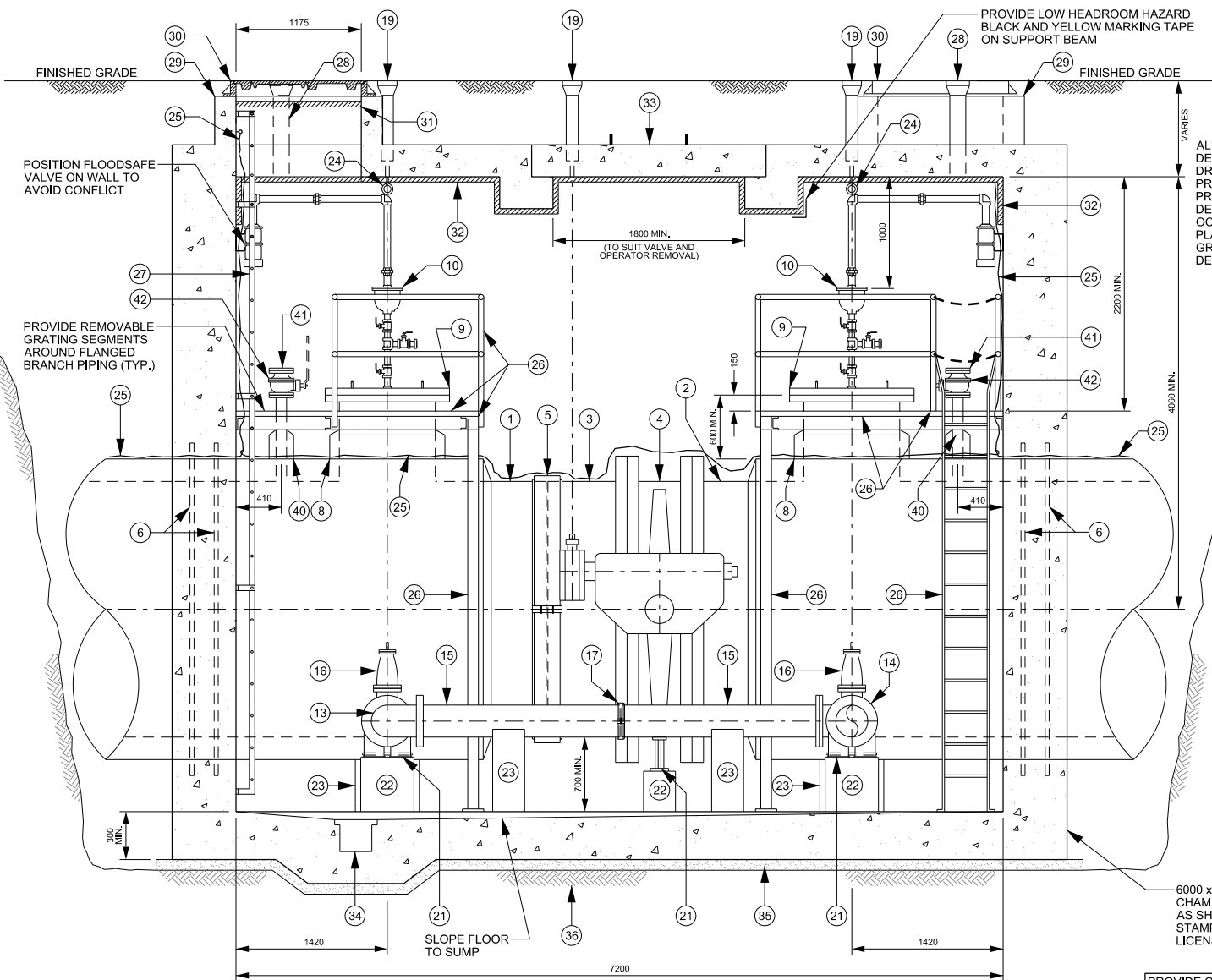
AFO STACK DETAIL AT 1000mm FLANGED BRANCH - IF REQUIRED



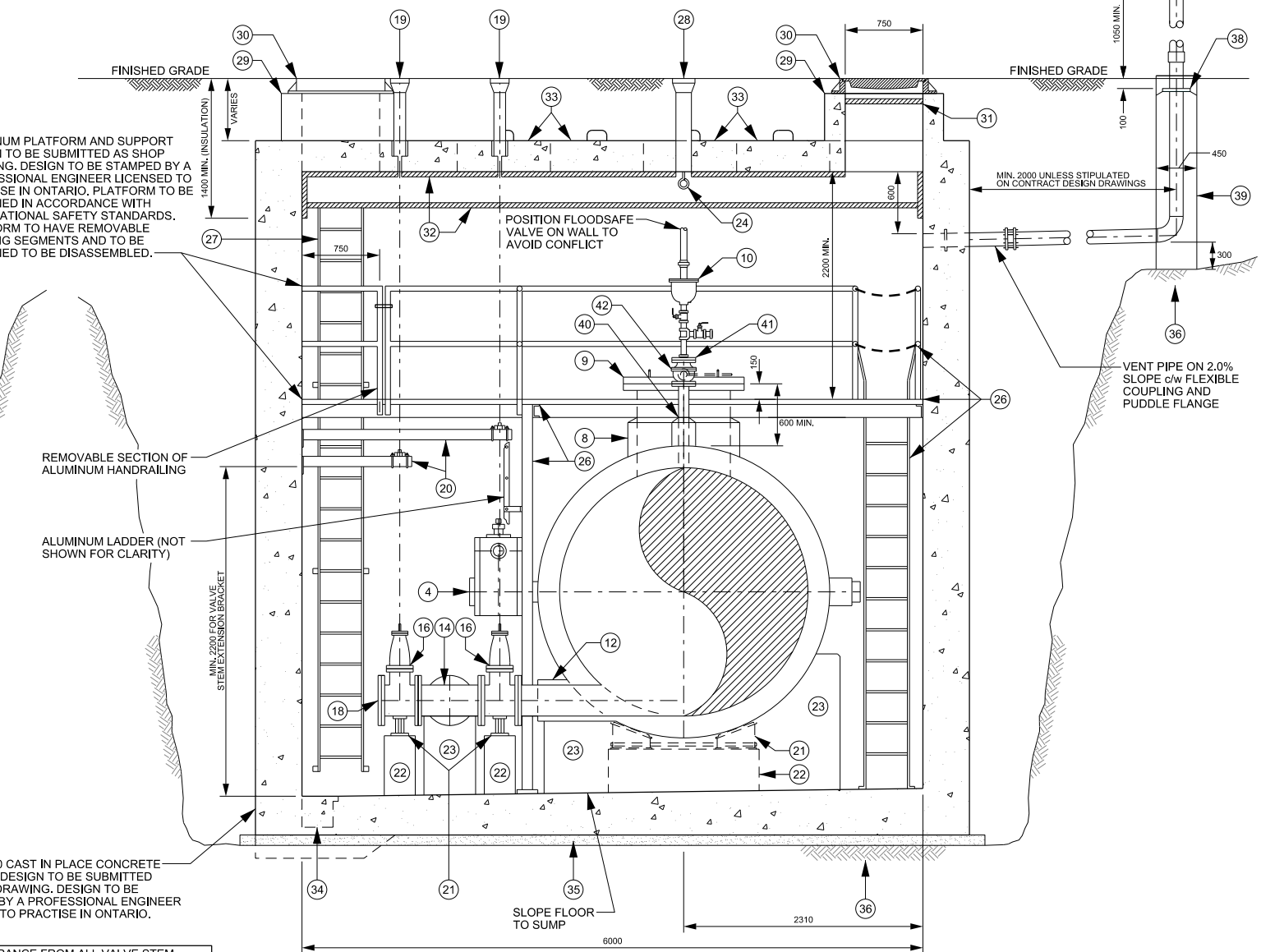
9000mm REDUCING FLANGE LIFTING HANDLE DETAIL



SAMPLE VALVE INSTALLATION AT 9000mm REDUCING FLANGE ONLY IF AIR RELEASE IS NOT REQUIRED



SECTION A-A



SECTION B-B

NOTE

1. REFER TO TYPICAL LINE VALVE CHAMBER DETAIL 1 OF 2 (STD. DWG. 1-3-42) FOR PLAN VIEWS.
2. ALL PIPING, FITTINGS, VALVES, APPURTENANCES AND MECHANICAL RESTRAINTS TO BE c/w DENSO PASTE, DENSO MASTIC AND DENSO TAPE OR APPROVED EQUAL, APPLIED TO MANUFACTURER'S RECOMMENDATIONS.



PUBLIC WORKS STANDARD DRAWING

TYPICAL LINE VALVE CHAMBER FOR 2400 DIAMETER CONCRETE PRESSURE PIPE DETAIL 2 OF 2

REV. DATE: APRIL 2014

APPROVED BY

DRAWN BY

A.P.

AINLEY GROUP

STD. DWG. NUMBER

SCALE

1-3-43

N.T.S.