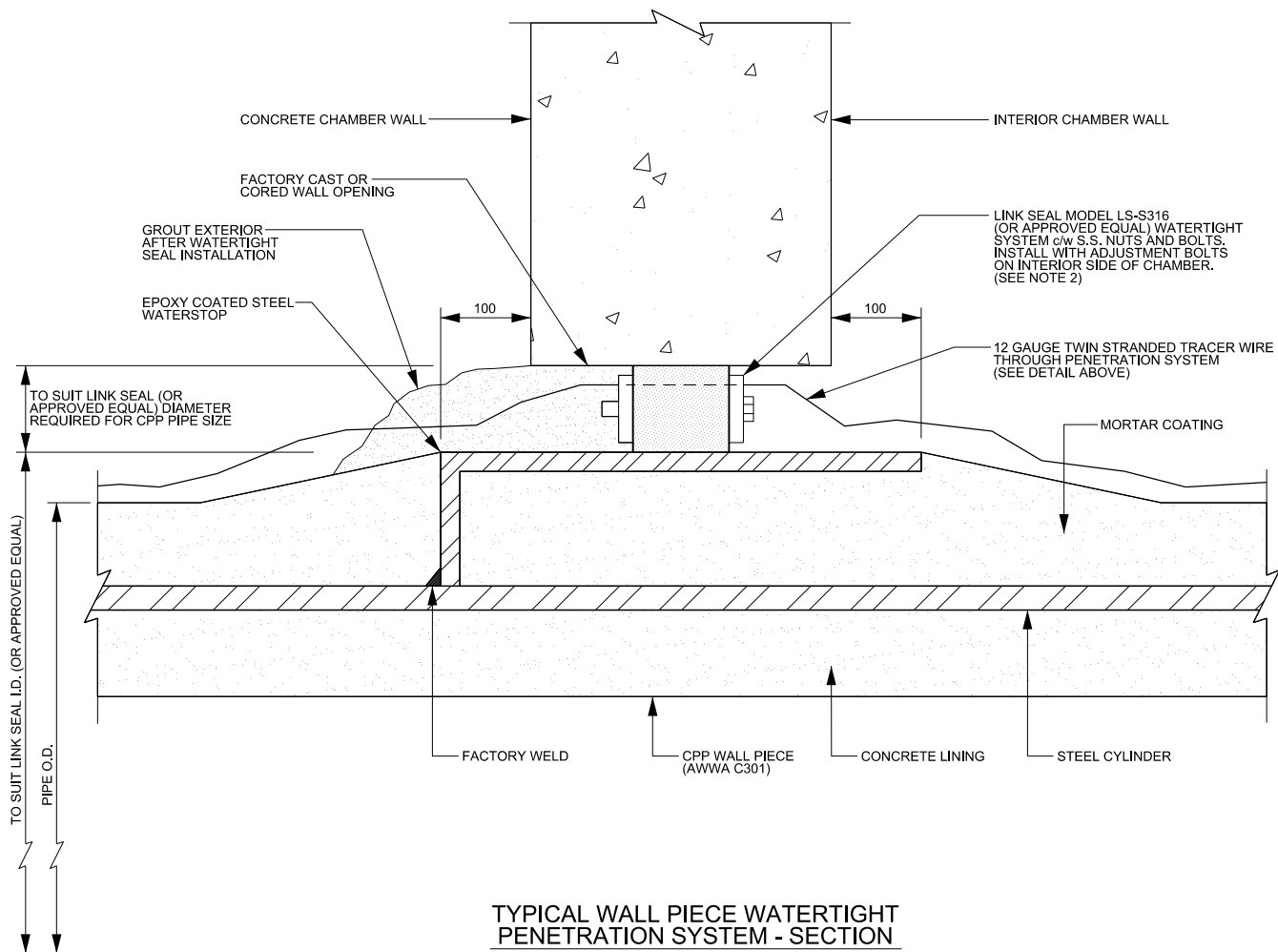


**TYPICAL TRACER WIRE DETAIL  
AT WATERTIGHT PENETRATION SYSTEM**



**TYPICAL WALL PIECE WATERTIGHT  
PENETRATION SYSTEM - SECTION**

**NOTE**

1. STEEL WATERSTOP TO BE EPOXY COATED.
2. LINK SEAL (OR EQUIVALENT) SYSTEM TO BE INSTALLED WITH ADJUSTING BOLTS MOUNTED TOWARDS THE INTERIOR OF CHAMBER. LINK SEAL DESIGN TO BE BY MANUFACTURER COMPLETE WITH SHOP DRAWING SUBMITTAL.
3. PIPE MUST BE CENTRED IN WALL OPENING AND SUPPORTED ON BOTH ENDS DURING LINK SEAL (OR EQUIVALENT) SYSTEM INSTALLATION.
4. FOR TRACER WIRE THROUGH PENETRATION SYSTEM AS DETAILED, A "V" MODIFICATION SHALL BE SPECIFIED FOR A SINGLE LINK OF THE LINK SEAL (OR EQUIVALENT) SYSTEM, TO ALLOW TRACER WIRE TO PENETRATE THROUGH A MOLDED HOLE.
5. TYPICAL WALL PIECE DETAIL WITH LINK SEAL (OR EQUIVALENT) SYSTEM SHOWN ON THIS DRAWING IS APPLICABLE FOR PIPE DIAMETERS UP TO AND INCLUDING 1200mm.



**PUBLIC WORKS  
STANDARD DRAWING**

REV. DATE: APRIL 2014

APPROVED BY

DRAWN BY

A.P.

AINLEY GROUP

STD. DWG. NUMBER

SCALE

**1-3-4**

N.T.S.

**TYPICAL CONCRETE PRESSURE PIPE WALL PIECE  
FOR WATERTIGHT SEAL AT PRECAST CHAMBER WALLS**