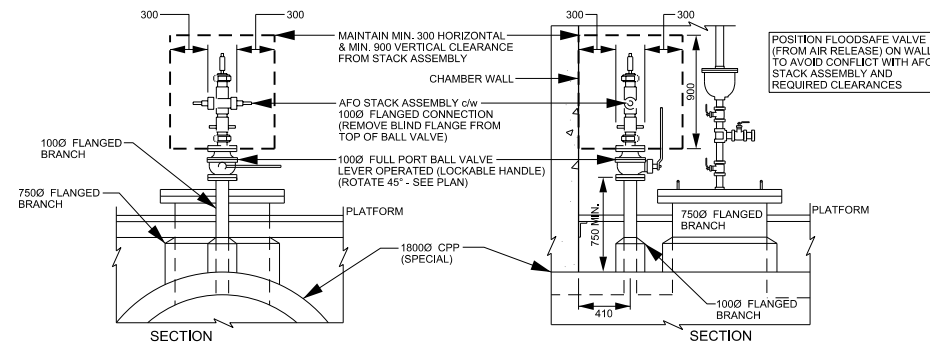
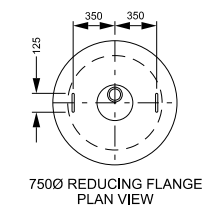


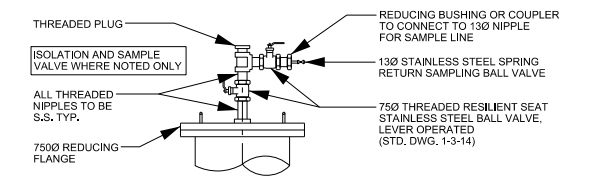
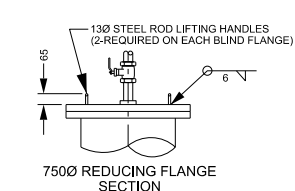
ALTERNATE ACCESS RISER AND COVER INSTALLATION FOR CHAMBERS LOCATED OFF PAVEMENT



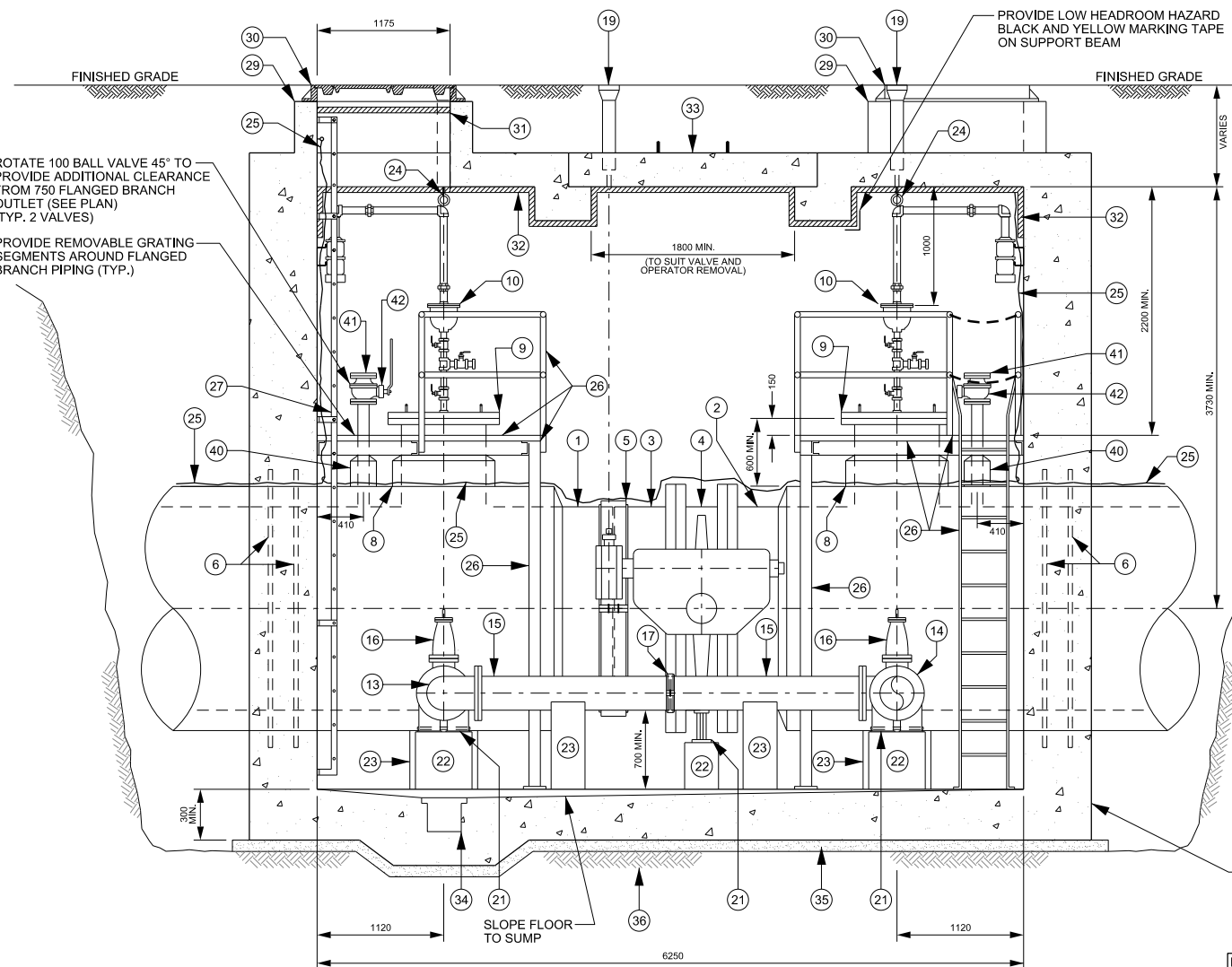
AFO STACK DETAIL AT 1000 FLANGED BRANCH - IF REQUIRED



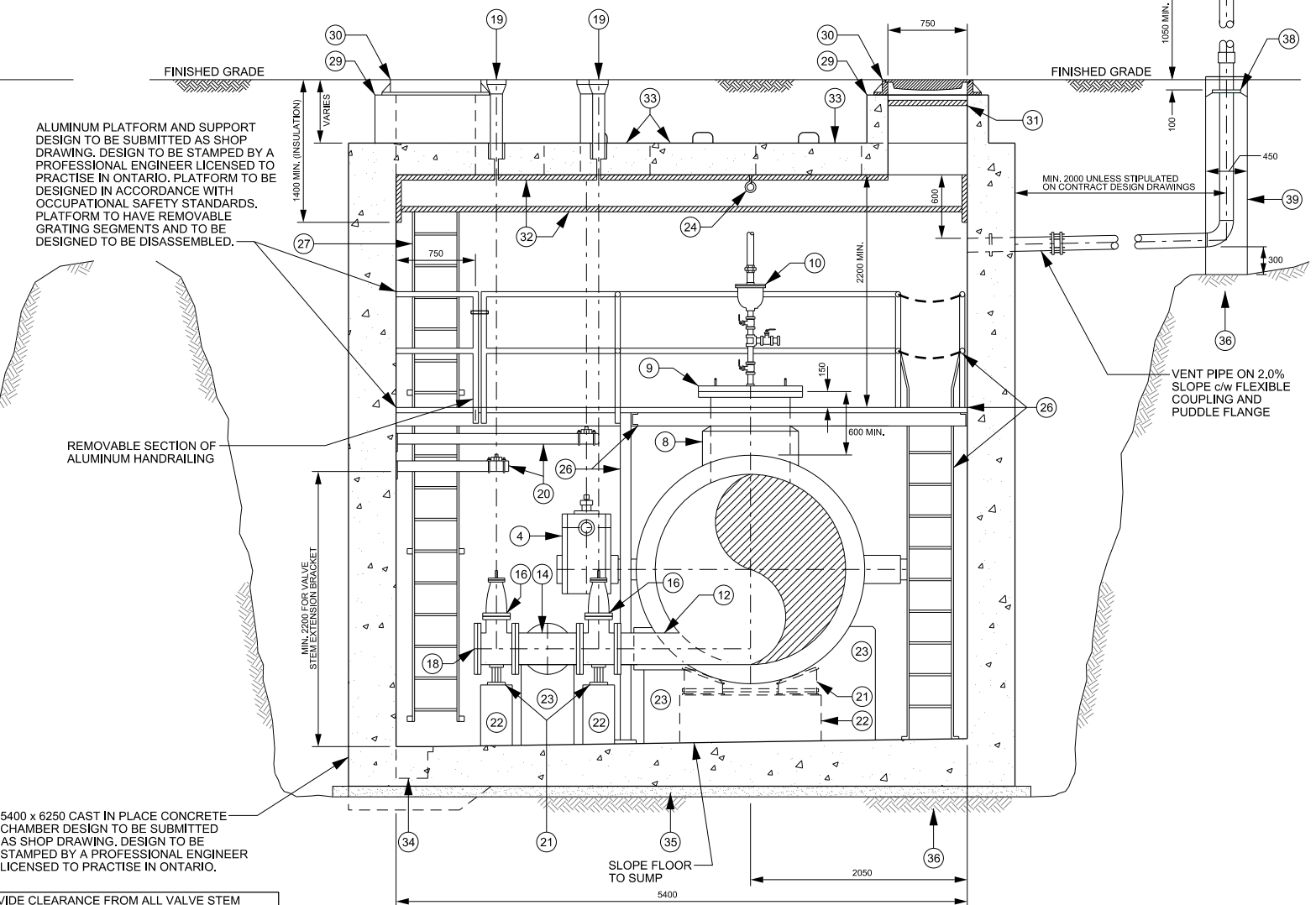
750Ø REDUCING FLANGE LIFTING HANDLE DETAIL



SAMPLE VALVE INSTALLATION AT 750Ø REDUCING FLANGE ONLY IF AIR RELEASE IS NOT REQUIRED



SECTION A-A



SECTION B-B

- NOTE**
- REFER TO TYPICAL LINE VALVE CHAMBER DETAIL 1 OF 2 (STD. DWG. 1-3-38) FOR PLAN VIEWS.
 - ALL PIPING, FITTINGS, VALVES, APPURTENANCES AND MECHANICAL RESTRAINTS TO BE c/w DENSO PASTE, DENSO MASTIC AND DENSO TAPE OR APPROVED EQUAL, APPLIED TO MANUFACTURER'S RECOMMENDATIONS.



PUBLIC WORKS STANDARD DRAWING

REV. DATE: APRIL 2014

APPROVED BY: A.P. DRAWN BY: AINLEY GROUP

TYPICAL LINE VALVE CHAMBER FOR 1800 DIAMETER CONCRETE PRESSURE PIPE DETAIL 2 OF 2

STD. DWG. NUMBER: 1-3-39 SCALE: N.T.S.