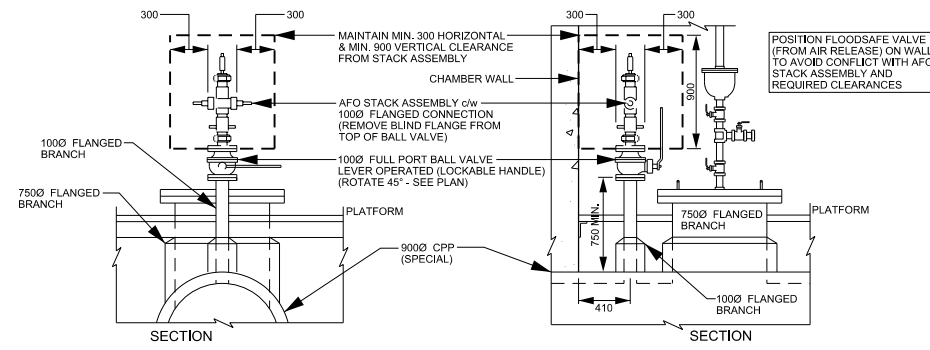
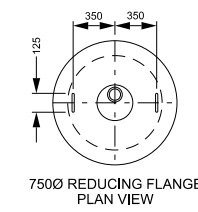


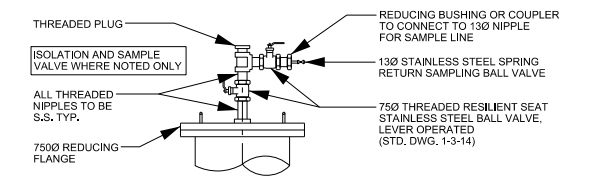
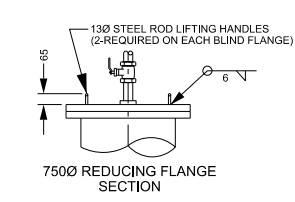
ALTERNATE ACCESS RISER AND COVER INSTALLATION FOR CHAMBERS LOCATED OFF PAVEMENT



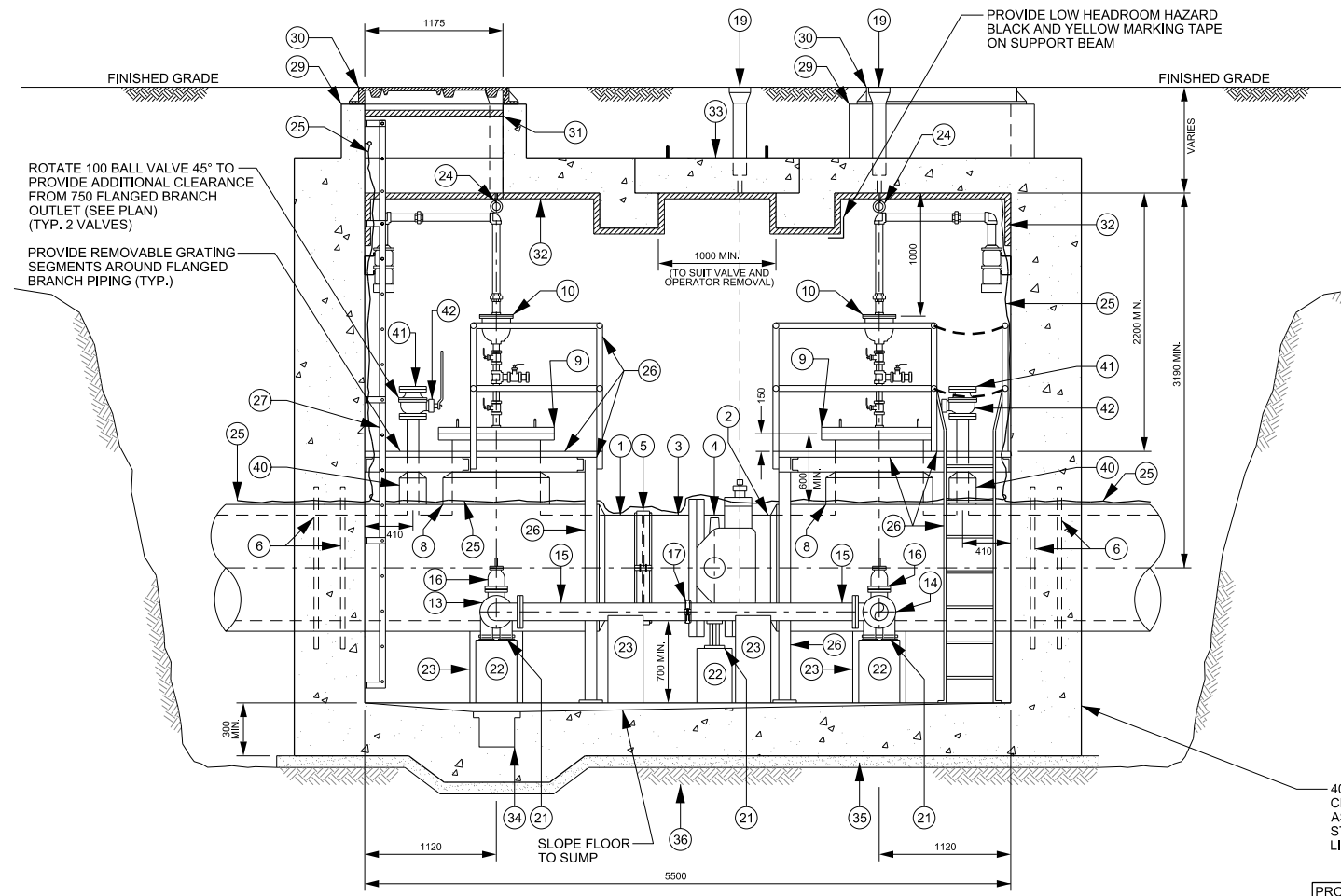
AFO STACK DETAIL AT 1000 FLANGED BRANCH - IF REQUIRED



750Ø REDUCING FLANGE LIFTING HANDLE DETAIL



SAMPLE VALVE INSTALLATION AT 750Ø REDUCING FLANGE ONLY IF AIR RELEASE IS NOT REQUIRED



SECTION A-A

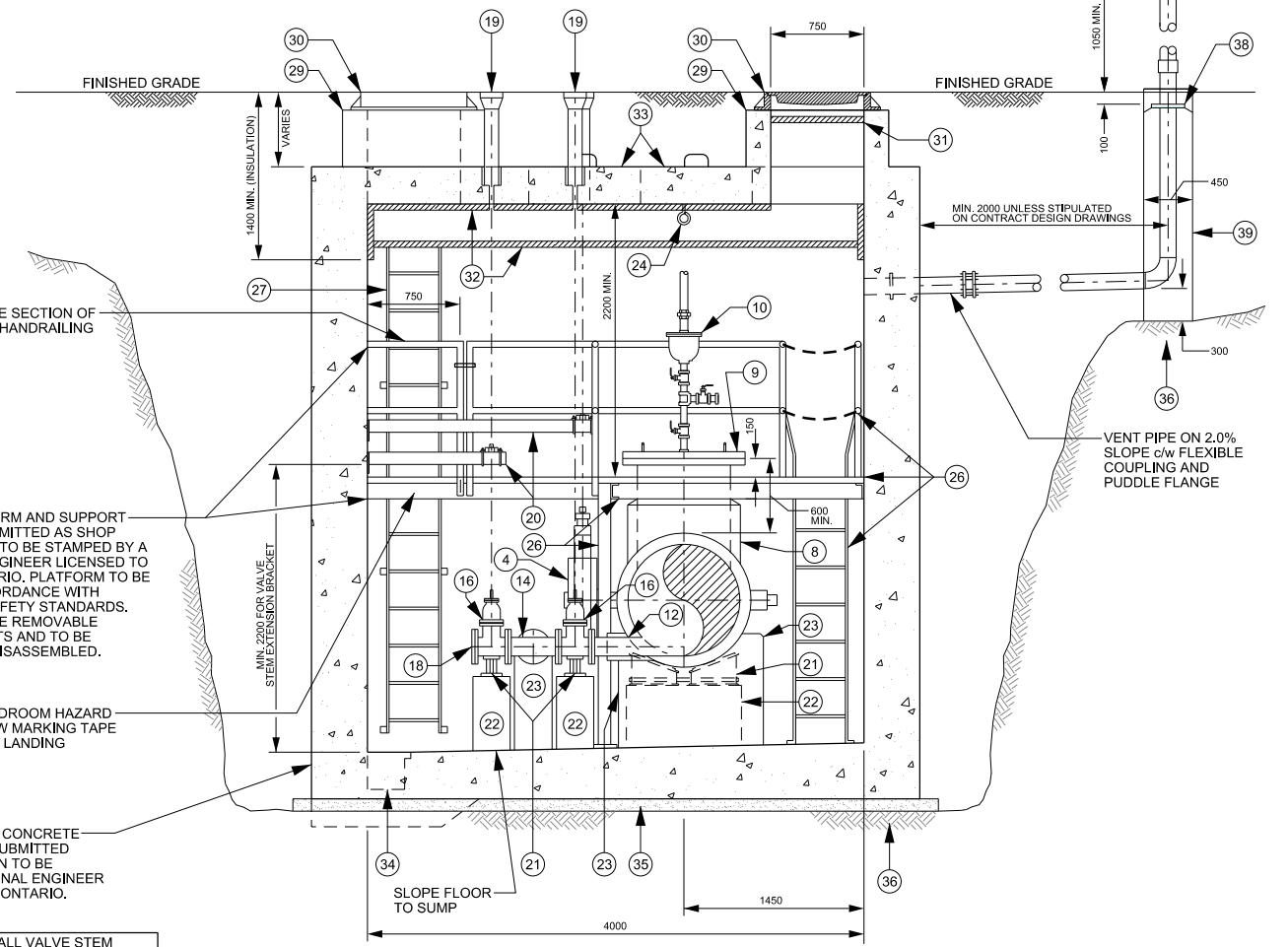
REMOVABLE SECTION OF ALUMINUM HANDRAILING

ALUMINUM PLATFORM AND SUPPORT DESIGN TO BE SUBMITTED AS SHOP DRAWING. DESIGN TO BE STAMPED BY A PROFESSIONAL ENGINEER LICENSED TO PRACTISE IN ONTARIO. PLATFORM TO BE DESIGNED IN ACCORDANCE WITH OCCUPATIONAL SAFETY STANDARDS. PLATFORM TO HAVE REMOVABLE GRATING SEGMENTS AND TO BE DESIGNED TO BE DISASSEMBLED.

PROVIDE LOW HEADROOM HAZARD BLACK AND YELLOW MARKING TAPE ON BOTH SIDES OF LANDING SUPPORT BEAM

4000 x 5500 CAST IN PLACE CONCRETE CHAMBER DESIGN TO BE SUBMITTED AS SHOP DRAWING. DESIGN TO BE STAMPED BY A PROFESSIONAL ENGINEER LICENSED TO PRACTISE IN ONTARIO.

PROVIDE CLEARANCE FROM ALL VALVE STEM EXTENSION BRACKETS TO ENSURE UNRESTRICTED ACCESS TO PLATFORMS AND LADDERS



SECTION B-B

- NOTE**
- REFER TO TYPICAL LINE VALVE CHAMBER DETAIL 1 OF 2 (STD. DWG. 1-3-32) FOR PLAN VIEWS.
 - ALL PIPING, FITTINGS, VALVES, APPURTENANCES AND MECHANICAL RESTRAINTS TO BE c/w DENSO PASTE, DENSO MASTIC AND DENSO TAPE OR APPROVED EQUAL, APPLIED TO MANUFACTURER'S RECOMMENDATIONS.



PUBLIC WORKS STANDARD DRAWING

REV. DATE: APRIL 2014

APPROVED BY	DRAWN BY
A.P.	AINLEY GROUP

TYPICAL LINE VALVE CHAMBER FOR 900 DIAMETER CONCRETE PRESSURE PIPE DETAIL 2 OF 2

STD. DWG. NUMBER	SCALE
1-3-33	N.T.S.