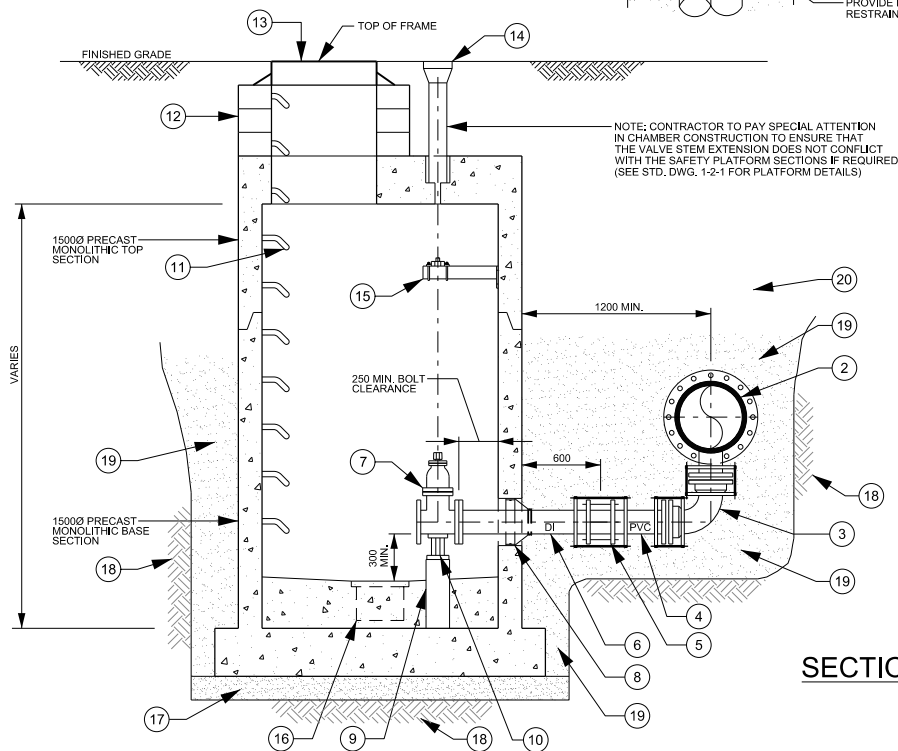


ITEM	ITEM DESCRIPTION
1	400Ø PVC PIPE, AS PER DESIGN
2	400x1500 ANCHOR TEE c/w MECHANICAL RESTRAINTS
3	1500 90Ø BEND c/w MECHANICAL RESTRAINTS
4	1500 PVC PIPE, AS PER DESIGN
5	150Ø DUCTILE IRON TO PVC ADAPTOR c/w MECHANICAL RESTRAINTS
6	150Ø DUCTILE IRON PIPE, AS PER DESIGN
7	150Ø FLANGED, RESILIENT SEAT GATE VALVE AWWA C509 FUSION BONDED EPOXY SHOP COAT FINISH ON EXTERIOR OF VALVE, FBE INTERIOR COATING TO BE ANS/NSF 61 APPROVED c/w 50mm SQ. OPERATING NUT AND EXTENSION STEM
8	CONVENTIONAL BOOT FLEXIBLE WATERTIGHT SEAL (PRESS-SEAL PSX OR APPROVED EQUAL)
9	CONCRETE BASE c/w STEEL VALVE SUPPORT (STD. DWG. 1-2-6), CONCRETE BASE HEIGHT TO SUIT INSTALLATION
10	STEEL VALVE SUPPORT (STD. DWG. 1-2-6)
11	CHAMBER STEPS
12	APPROVED ADJUSTMENT UNITS (STD. DWG. 1-1-6)
13	STANDARD FRAME AND AND COVER
14	VALVE BOX c/w SLEEVE AND EXTENSION STEM
15	VALVE STEM EXTENSION SUPPORT (STD. DWG. 1-2-4) (POSITIONED TO SUIT AS PER STD. DWG. 1-2-1 IF REQUIRED)
16	SUMP c/w FRAME AND GRATE (STD. DWG. 1-1-8)
17	15MPa CONCRETE MUD MAT 150mm THK. MIN.
18	UNDISTURBED GROUND
19	GRANULAR 'A'
20	BACKFILL AS SPECIFIED



NOTE

- ALL VALVES TO BE RESILIENT SEAT TO AWWA C509, FUSION BONDED EPOXY (FBE) SHOP COAT FINISH ON INTERIOR AND EXTERIOR OF VALVE TO AWWA C550. INTERIOR COATING TO BE FBE ANS/NSF 61 APPROVED.
- INTERIOR OF ALL STEEL (NOT STAINLESS STEEL) PIPE SHALL BE LIQUID EPOXY COATED TO AWWA C210 AND BE ANS/NSF 61 APPROVED. ALL EXTERIOR SURFACES SHALL BE LIQUID EPOXY COATED TO AWWA C210.
- INTERIOR OF ALL DUCTILE IRON PIPE AND FITTINGS IN CONTACT WITH POTABLE WATER SHALL BE CEMENT MORTAR LINED TO AWWA C104.
- IF THE BASE OF ANY CHAMBER IS GREATER THAN 10.0m IN DEPTH THE CONTRACTOR SHALL SUPPLY A SHOP DRAWING, STAMPED BY P. ENG. LICENSED TO PRACTISE IN THE PROVINCE OF ONTARIO, FOR REVIEW OF THE BASE SLAB AND MANHOLE SECTIONS PRIOR TO FABRICATION.
- VALVE STEM EXTENSION SUPPORT BRACKETS SHALL SUPPORT TOTAL WEIGHT OF THE EXTENSION STEM, NO FORCES SHALL BE TRANSMITTED TO THE VALVE OR GEARBOX.
- ALL NUTS, BOLTS AND WASHERS TO BE STAINLESS STEEL UNLESS OTHERWISE NOTED.
- ALL PIPING, FITTINGS, VALVES, APPURTENANCES AND MECHANICAL RESTRAINTS TO BE c/w DENSO PASTE, DENSO MASTIC AND DENSO TAPE OR APPROVED EQUAL, APPLIED TO MANUFACTURER'S RECOMMENDATIONS.



**PUBLIC WORKS
STANDARD DRAWING**

REV. DATE: APRIL 2014

APPROVED BY

DRAWN BY

A.P.

AINLEY GROUP

STD. DWG. NUMBER

SCALE

1-3-29

N.T.S.

**TYPICAL SINGLE DRAIN CHAMBER DETAILS
FOR 400 DIAMETER PVC PIPE**