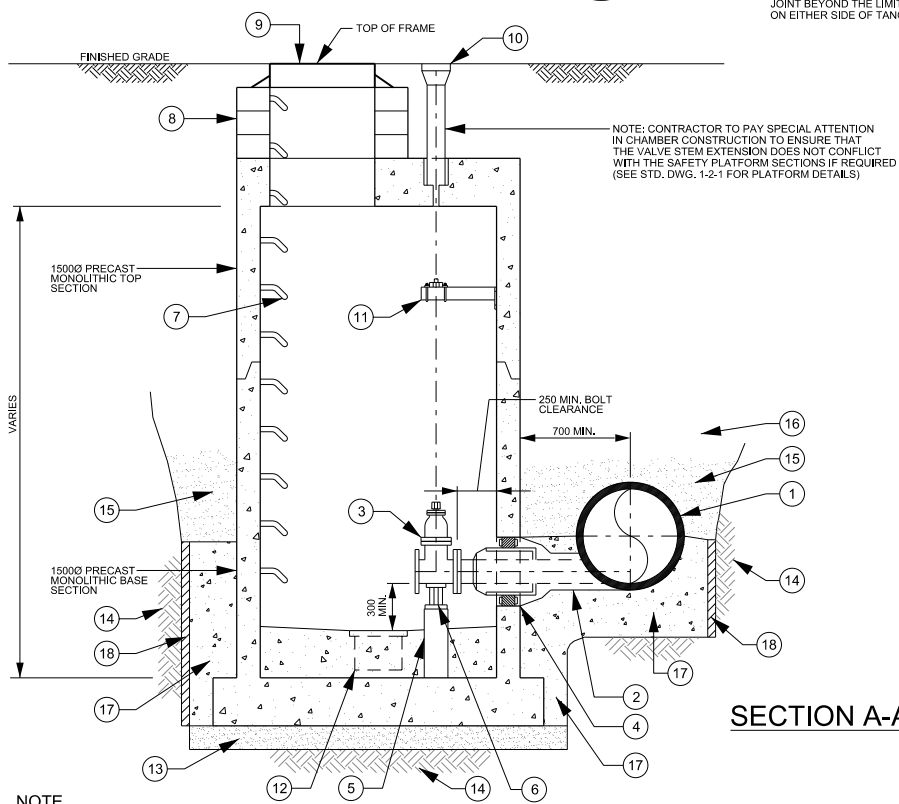


ITEM	ITEM DESCRIPTION
1	600 CONCRETE PRESSURE PIPE, AWWA C-301 AS PER DESIGN
2	1500 I.D. TANGENT FLANGED BRANCH (F.B.E.)
3	1500 FLANGED, RESILIENT SEAT GATE VALVE AWWA C509 FUSION BONDED EPOXY SHOP COAT FINISH ON EXTERIOR OF VALVE, FBE INTERIOR COATING TO BE ANSI/NSF 61 APPROVED c/w 50mm SQ. OPERATING NUT AND EXTENSION STEM
4	CPP WALL PIECE (STD. DWG. 1-3-4)
5	CONCRETE BASE c/w STEEL VALVE SUPPORT (STD. DWG. 1-2-6), CONCRETE BASE HEIGHT TO SUIT INSTALLATION
6	STEEL VALVE SUPPORT (STD. DWG. 1-2-6)
7	CHAMBER STEPS
8	APPROVED ADJUSTMENT UNITS (STD. DWG. 1-1-6)
9	STANDARD FRAME AND AND COVER
10	VALVE BOX c/w SLEEVE AND EXTENSION STEM
11	VALVE STEM EXTENSION SUPPORT (STD. DWG. 1-2-4) (POSITIONED TO SUIT AS PER STD. DWG. 1-2-1 IF REQUIRED)
12	SUMP c/w FRAME AND GRATE (STD. DWG. 1-1-8)
13	15MPa CONCRETE MUD MAT 150mm THK. MIN.
14	UNDISTURBED GROUND
15	GRANULAR 'A'
16	BACKFILL AS SPECIFIED
17	UNSHRINKABLE FILL
18	100mm THICK RIGID POLYETHYLENE FOAM IF WATERMAIN IS IN ROCK OR SHALE TRENCH



**NOTE**

- ALL VALVES TO BE RESILIENT SEAT TO AWWA C509, FUSION BONDED EPOXY (FBE) SHOP COAT FINISH ON INTERIOR AND EXTERIOR OF VALVE TO AWWA C550. INTERIOR COATING TO BE FBE ANSI/NSF 61 APPROVED.
- INTERIOR OF ALL STEEL (NOT STAINLESS STEEL) PIPE SHALL BE LIQUID EPOXY COATED TO AWWA C210 AND BE ANSI/NSF 61 APPROVED. ALL EXTERIOR SURFACES SHALL BE LIQUID EPOXY COATED TO AWWA C210.
- INTERIOR OF ALL DUCTILE IRON PIPE AND FITTINGS IN CONTACT WITH POTABLE WATER SHALL BE CEMENT MORTAR LINED TO AWWA C104.
- IF THE BASE OF ANY CHAMBER IS GREATER THAN 10.0m IN DEPTH THE CONTRACTOR SHALL SUPPLY A SHOP DRAWING, STAMPED BY P. ENG. LICENSED TO PRACTISE IN THE PROVINCE OF ONTARIO, FOR REVIEW OF THE BASE SLAB AND MANHOLE SECTIONS PRIOR TO FABRICATION.
- VALVE STEM EXTENSION SUPPORT BRACKETS SHALL SUPPORT TOTAL WEIGHT OF THE EXTENSION STEM, NO FORCES SHALL BE TRANSMITTED TO THE VALVE OR GEARBOX.
- ALL NUTS, BOLTS AND WASHERS TO BE STAINLESS STEEL UNLESS OTHERWISE NOTED.
- ALL PIPING, FITTINGS, VALVES, APPURTENANCES AND MECHANICAL RESTRAINTS TO BE c/w DENSO PASTE, DENSO MASTIC AND DENSO TAPE OR APPROVED EQUAL, APPLIED TO MANUFACTURER'S RECOMMENDATIONS.



**PUBLIC WORKS  
STANDARD DRAWING**

REV. DATE: APRIL 2014

APPROVED BY  
**A.P.**

DRAWN BY  
**AINLEY GROUP**

**TYPICAL SINGLE DRAIN CHAMBER DETAILS  
FOR 600 DIAMETER CONCRETE PRESSURE PIPE**

STD. DWG. NUMBER  
**1-3-28**

SCALE  
**N.T.S.**