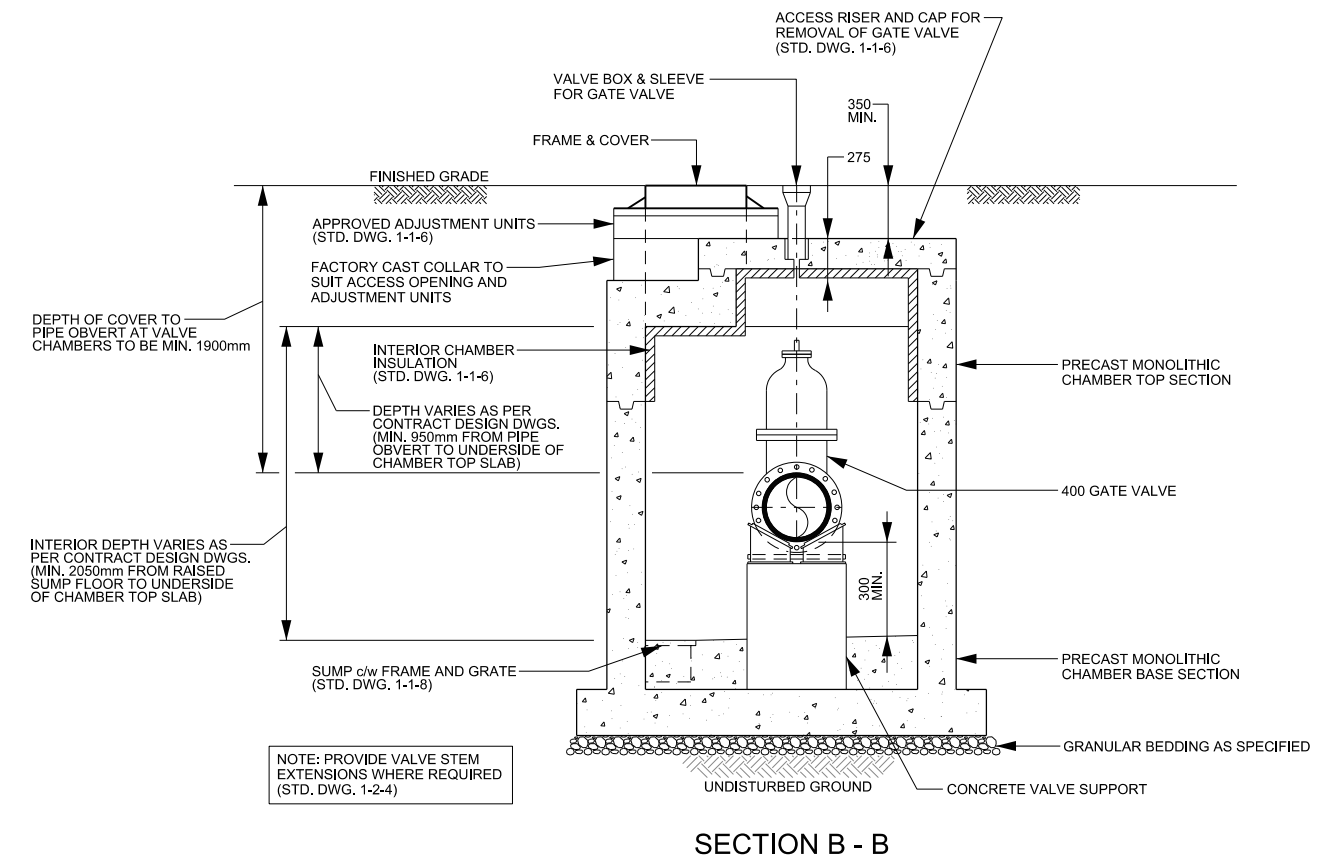
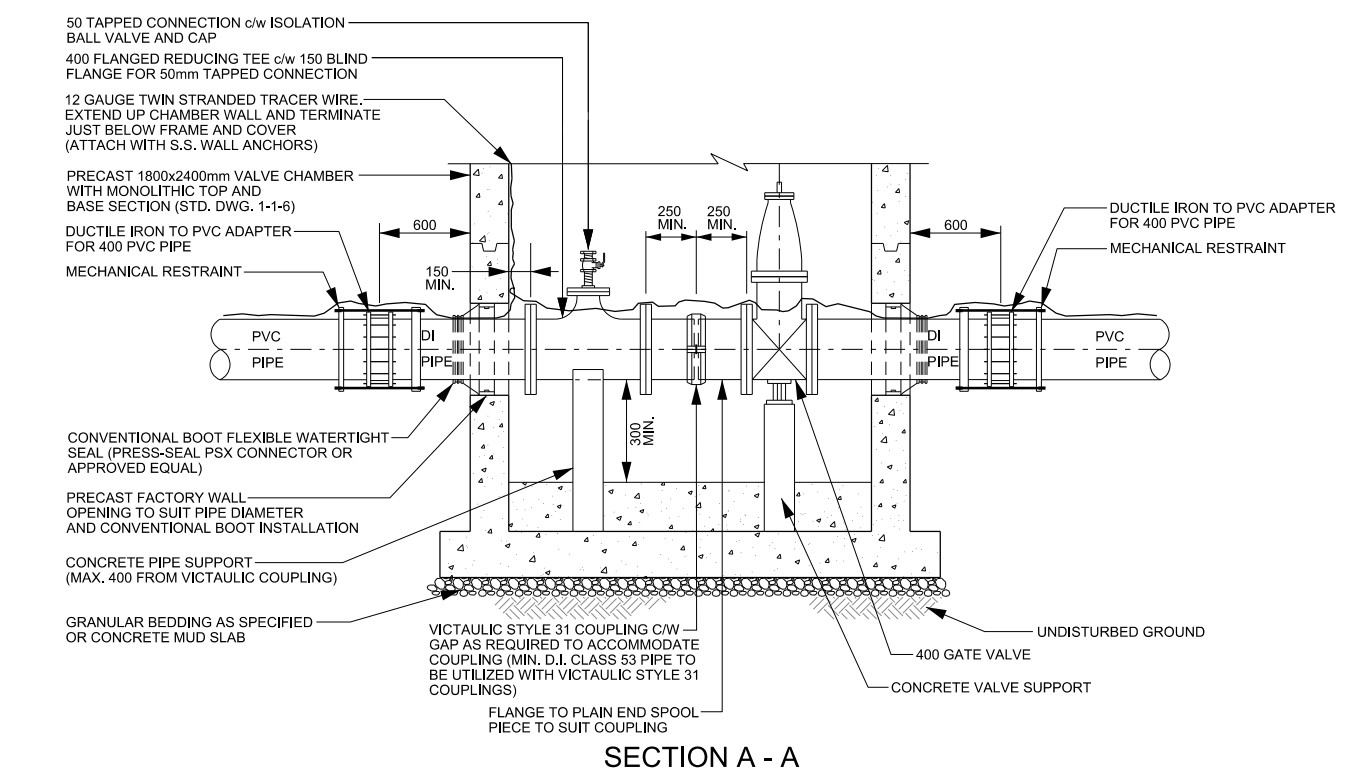
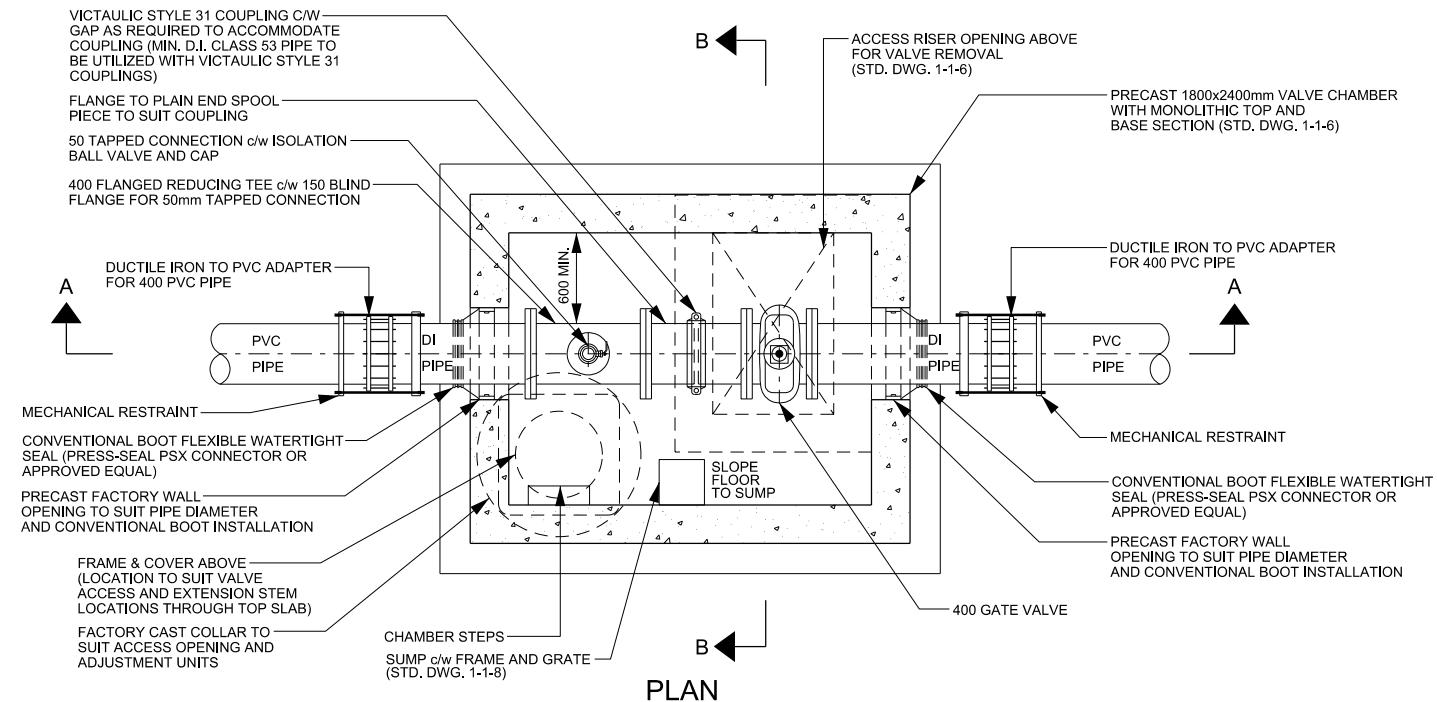


- NOTE: 1) MINIMUM CHAMBER SIZE TO BE 1800x2400mm.  
 2) DEPTH OF COVER OVER WATERMAINS AT VALVE CHAMBERS TO BE MINIMUM 1.9m. WATERMAIN PROFILE DESIGN TO ACCOUNT FOR ADDITIONAL 0.2m DEPTH REQUIRED AT CHAMBERS OVER AND ABOVE THE MINIMUM 1.7m REQUIRED FOR STANDARD PIPE INSTALLATION.  
 3) 400 DIAMETER GATE VALVES TO HAVE NON-RISING STEMS.  
 4) CHAMBER TOP SLAB OPENINGS TO BE CO-ORDINATED WITH VALVE ACCESS HATCHES, VALVE BOX AND SLEEVE EXTENSIONS AND MAN ACCESS FRAME AND COVERS.  
 5) CHAMBER LOCATIONS AND ELEVATIONS TO BE CO-ORDINATED WITH DEPTHS OF CURB & GUTTER LOCATIONS AND ROAD ELEVATION CHANGE DUE TO CROSS-FALL FROM ROAD CENTRELINE. PROVIDE MINIMUM DEPTH OF 350mm FROM FINAL GRADE TO TOP OF ACCESS RISER AND CAP (CAP FOR VALVE REMOVAL) AS SHOWN.  
 6) SHOP DRAWING SUBMISSIONS ARE REQUIRED FOR ALL CHAMBERS (AS PER STD. DWG. 1-1-0). CONTRACTOR TO FIELD VERIFY AND PROVIDE ALL CHAMBER ELEVATIONS REQUIRED INCLUDING FINAL GRADE AND PIPE INVERT AT ACTUAL CHAMBER LOCATIONS.  
 7) REFER TO CONTRACT DESIGN DRAWINGS FOR REQUIRED VALVE OPTIONS AT EACH PROJECT-SPECIFIC VALVE CHAMBER.  
 8) VENT PIPE IS NOT REQUIRED IN CHAMBERS WITH ISOLATION VALVES ONLY.



- NOTES**
- ALL VALVES TO BE RESILIENT SEAT TO AWWA C509, FUSION BONDED EPOXY (FBE) SHOP COAT FINISH ON INTERIOR AND EXTERIOR OF VALVE TO AWWA C550. INTERIOR COATING TO BE FBE ANSI/NSF 61 APPROVED.
  - INTERIOR OF ALL STEEL (NOT STAINLESS STEEL) PIPE SHALL BE LIQUID EPOXY COATED TO AWWA C210 AND BE ANSI/NSF 61 APPROVED. ALL EXTERIOR SURFACES SHALL BE LIQUID EPOXY COATED TO AWWA C210.
  - ALL THREADED PIPE, FITTINGS, VALVES AND APPURTENANCES MUST BE STAINLESS STEEL 304L SCHEDULE 40 TO ASTM A776. STAINLESS STEEL BALL VALVES TO BE LEVER OPERATED.
  - PROVIDE ALL FLANGED OUTLETS, IPT's, AIR RELEASE OR VACUUM VALVES, DRAIN VALVES AND LINE VALVES AS SHOWN ON CONSTRUCTION DRAWINGS.
  - REFER TO STD. DWG. 1-2-6 FOR TYPICAL VALVE AND PIPE SUPPORT DETAILS. PROVIDE CONCRETE PIPE SUPPORTS WITHIN A MAXIMUM DISTANCE OF ONE PIPE DIAMETER FROM ALL VICTAULIC COUPLINGS.
  - ALL PIPING, FITTINGS, VALVES, APPURTENANCES AND MECHANICAL RESTRAINTS TO BE c/w DENSO PASTE, DENSO MASTIC AND DENSO TAPE OR APPROVED EQUAL, APPLIED TO MANUFACTURER'S RECOMMENDATIONS.

	<b>PUBLIC WORKS STANDARD DRAWING</b>		REV. DATE: APRIL 2014
	APPROVED BY <b>A.P.</b>	DRAWN BY <b>AINLEY GROUP</b>	STD. DWG. NUMBER <b>1-3-24</b>
<b>TYPICAL LINE VALVE CHAMBER FOR 400mm PVC PIPE WITH ISOLATION VALVE</b>			