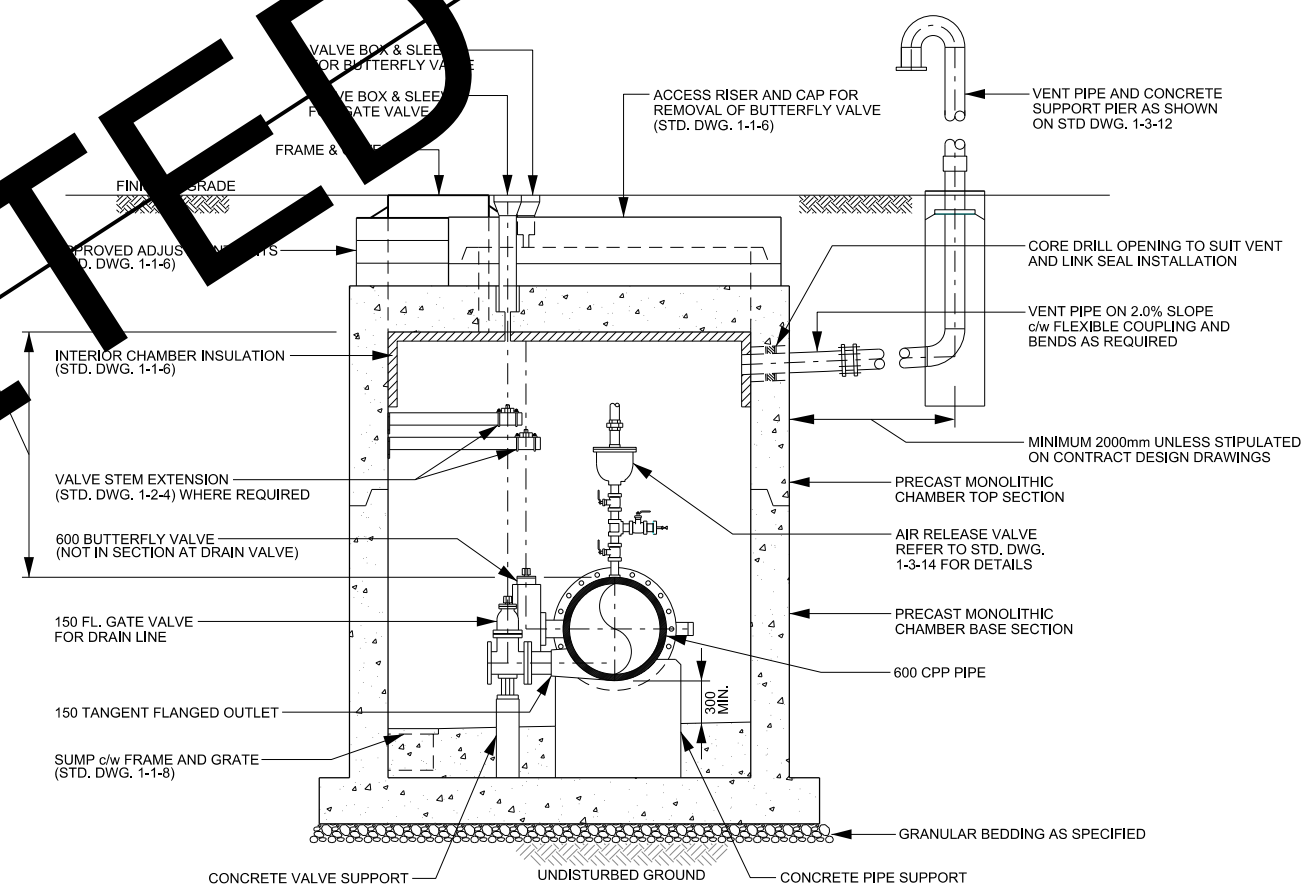
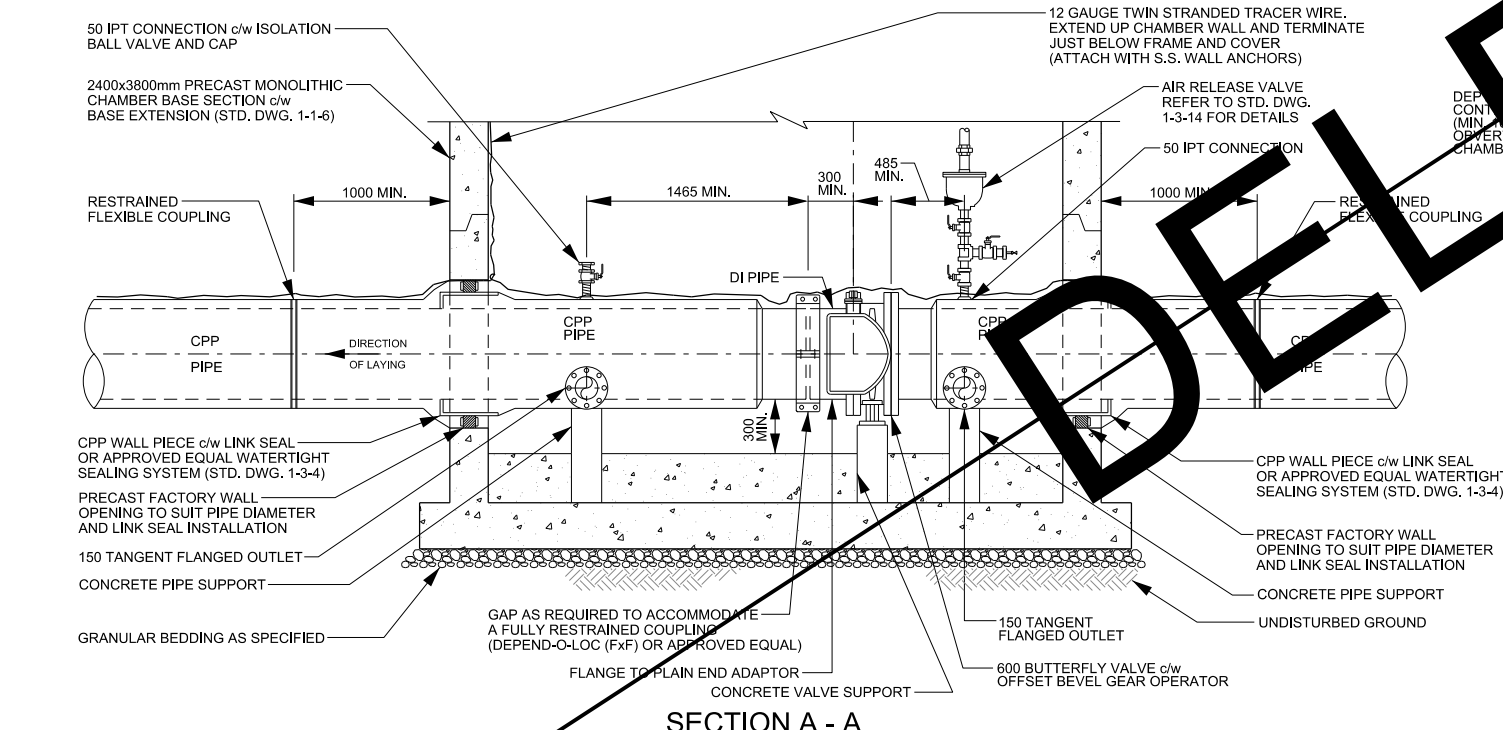



NOTE: 1) MINIMUM CHAMBER SIZE TO BE 2400x3800mm.
 2) CHAMBER TOP SLAB OPENINGS TO BE CO-ORDINATED WITH VALVE ACCESS HATCHES, VALVE BOX AND SLEEVE EXTENSIONS AND MAN ACCESS FRAME AND COVERS
 3) REFER TO CONTRACT DESIGN DRAWINGS FOR REQUIRED VALVE OPTIONS AT EACH PROJECT-SPECIFIC VALVE CHAMBER.



- NOTES**
1. ALL VALVES TO BE RESILIENT SEAT TO AWWA C504 OR AWWA C509, AS APPLICABLE, FUSION BONDED EPOXY (FBE) SHOP COAT FINISH ON INTERIOR AND EXTERIOR OF VALVE TO AWWA C550. INTERIOR COATING TO BE FBE ANSI/NSF 61 APPROVED.
 2. INTERIOR OF ALL STEEL (NOT STAINLESS STEEL) PIPE SHALL BE FUSION BONDED EPOXY (FBE) COATED TO AWWA C213 AND BE ANSI/NSF 61 APPROVED. ALL EXTERIOR SURFACES SHALL BE FBE COATED TO AWWA C213.
 3. ALL THREADED PIPE FITTINGS AND VALVES MUST BE STAINLESS STEEL 304L SCHEDULE 40 TO ASTM A776. STAINLESS STEEL BALL VALVES TO BE LEVER OPERATED.
 4. PROVIDE ALL FLANGED OUTLETS, IPT's, AIR RELEASE OR VACUUM VALVES, DRAIN VALVES AND LINE VALVES AS SHOWN ON CONSTRUCTION DRAWINGS.
 5. AIR AND DRAIN VALVE TO BE LOCATED WITHIN CHAMBER AS DICTATED BY PIPE GRADIENT.
 6. REFER TO STD. DWG. 1-2-6 FOR TYPICAL VALVE AND PIPE SUPPORT DETAILS.
 7. ALL INTERNAL AND EXTERNAL VALVES, FITTINGS, THROUGH WALL METAL PIPING AND MECHANICAL RESTRAINTS TO BE c/w DENSO PASTE, DENSO MASTIC AND DENSO TAPE OR APPROVED EQUAL, APPLIED TO MANUFACTURER'S RECOMMENDATIONS.

	PUBLIC WORKS STANDARD DRAWING		REV. DATE: NOVEMBER 2011	
	APPROVED BY A.P.		DRAWN BY AINLEY GROUP	
TYPICAL LINE VALVE CHAMBER FOR 600mm CONCRETE PRESSURE PIPE WITH ISOLATION VALVE, DOUBLE DRAIN VALVE AND COMBINATION AIR RELEASE OR VACUUM VALVE			STD. DWG. NUMBER 1-3-23	
			SCALE N.T.S.	