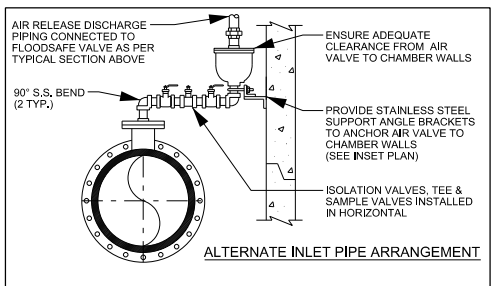
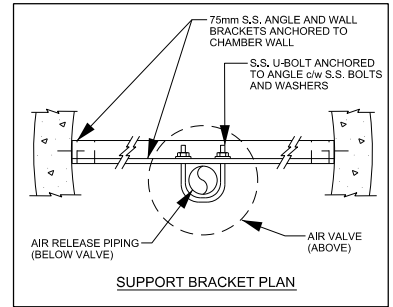


TYPICAL SECTION

AIR RELEASE VALVE IN CHAMBER



ALTERNATE INLET PIPE ARRANGEMENT



SUPPORT BRACKET PLAN

NOTE: WHERE CLEARANCE FROM UNDERSIDE OF CHAMBER TOP SLAB IS INSUFFICIENT, AN ALTERNATE AIR VALVE INLET PIPING CONFIGURATION MAY BE INSTALLED WITH TWO 90° BENDS AS SHOWN. ALTERNATE CONFIGURATION MUST BE CONNECTED TO FLOODSAFE VALVE TO AWWA C512 MOUNTED TO PRECAST CHAMBER WALL AS PER VALVE MANUFACTURER'S RECOMMENDATIONS (SIZED TO SUIT). INTERIOR AND EXTERIOR OF VALVE SHALL BE FUSION BONDED EPOXY COATED ANS/NSF 61 APPROVED. MOUNT FLOODSAFE VALVE AT HIGHEST POINT IN CHAMBER WHERE POSSIBLE.

NOTE

1. ALL VALVES TO BE RESILIENT SEAT TO AWWA C509, FUSION BONDED EPOXY (FBE) SHOP COAT FINISH ON INTERIOR AND EXTERIOR OF VALVE TO AWWA C550. INTERIOR COATING TO BE FBE ANS/NSF 61 APPROVED.
2. INTERIOR OF ALL STEEL (NOT STAINLESS STEEL) PIPE SHALL BE LIQUID EPOXY COATED TO AWWA C210 AND BE ANS/NSF 61 APPROVED. ALL EXTERIOR SURFACES SHALL BE LIQUID EPOXY COATED TO AWWA C210.
3. ALL THREADED PIPE, FITTINGS, VALVES AND APPURTENANCES MUST BE STAINLESS STEEL 304L SCHEDULE 40 TO ASTM A776. STAINLESS STEEL BALL VALVES TO BE LEVER OPERATED.
4. REFER TO STANDARD AIR RELEASE VALVE CHAMBER DRAWINGS FOR WATERMAIN DIAMETERS, CHAMBER SIZES AND DETAILS.
5. ALL PIPING, FITTINGS, VALVES, APPURTENANCES AND MECHANICAL RESTRAINTS TO BE c/w DENSO PASTE, DENSO MASTIC AND DENSO TAPE OR APPROVED EQUAL, APPLIED TO MANUFACTURER'S RECOMMENDATIONS.



**PUBLIC WORKS
STANDARD DRAWING**

REV. DATE: APRIL 2014

APPROVED BY

DRAWN BY

A.P.

AINLEY GROUP

STD. DWG. NUMBER

SCALE

1-3-14

N.T.S.

TYPICAL AIR RELEASE VALVE DETAIL