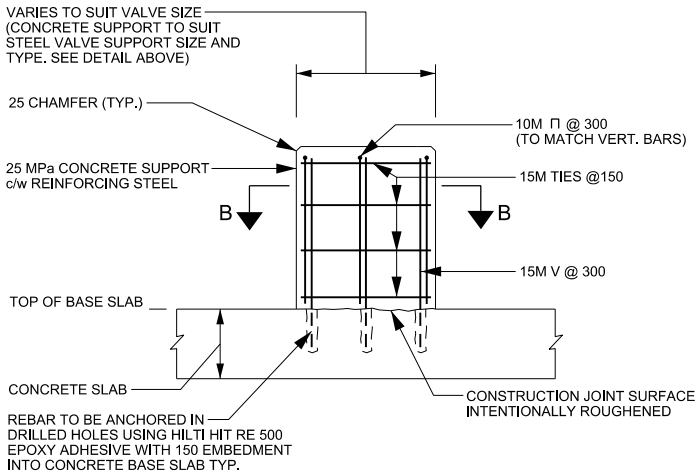


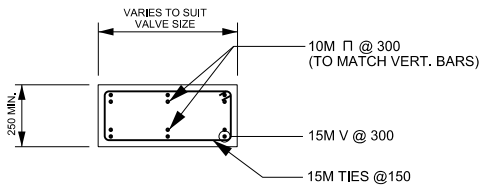
- NOTES:**
1. STEEL VALVE SUPPORTS AS PER MSU MISSISSAUGA LTD. OR APPROVED EQUAL
  2. ALL STEEL PLATE TO BE 10mm THICK
  3. CONTINUOUS WELDS AT ALL INTERSECTING JOINTS TO BE 6mm
  4. ALL PARTS TO BE HOT DIP GALVANIZED AFTER FABRICATION
  5. COAT UNDERSIDE OF PLATE WITH TWO COATS OF BITUMINOUS PAINT

### STEEL VALVE SUPPORT

NOTE: VALVE SUPPORT CONCRETE BASE REQUIRED WITH REINFORCING AS DETAILED THIS DRAWING

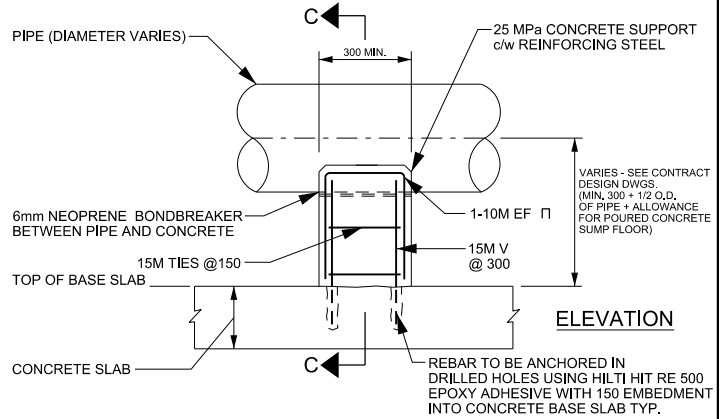


**ELEVATION**

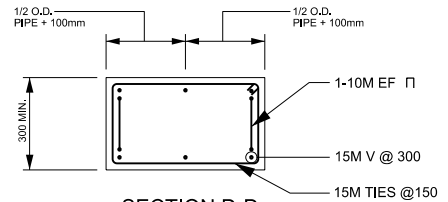


**SECTION B-B**

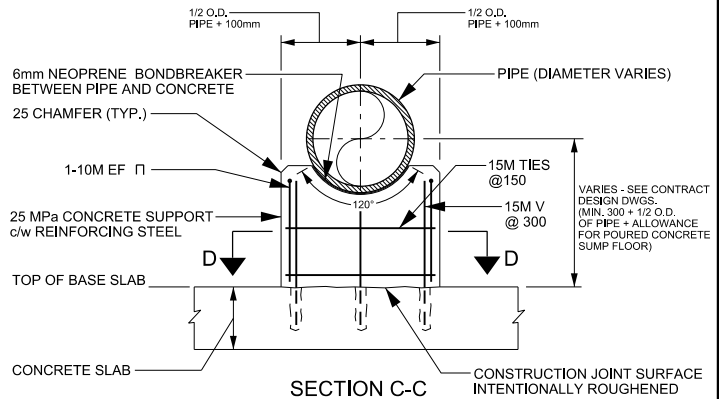
### VALVE SUPPORT CONCRETE BASE



**ELEVATION**



**SECTION D-D**



**SECTION C-C**

### PIPE SUPPORT CONCRETE BASE

FOR PIPE SUPPORT ONLY

**NOTE**

1. PROVIDE 6mm NEOPRENE BOND BREAKER AT ALL CONTACT POINTS BETWEEN PIPES, VALVES AND CONCRETE SUPPORTS
2. COVER TO REINFORCING STEEL = 50mm +/- 15mm



**PUBLIC WORKS  
STANDARD DRAWING**

REV. DATE: NOVEMBER 2011

APPROVED BY

DRAWN BY

A.P.

AINLEY GROUP

STD. DWG. NUMBER

SCALE

**1-2-6**

N.T.S.

**TYPICAL VALVE AND PIPE SUPPORT DETAILS**