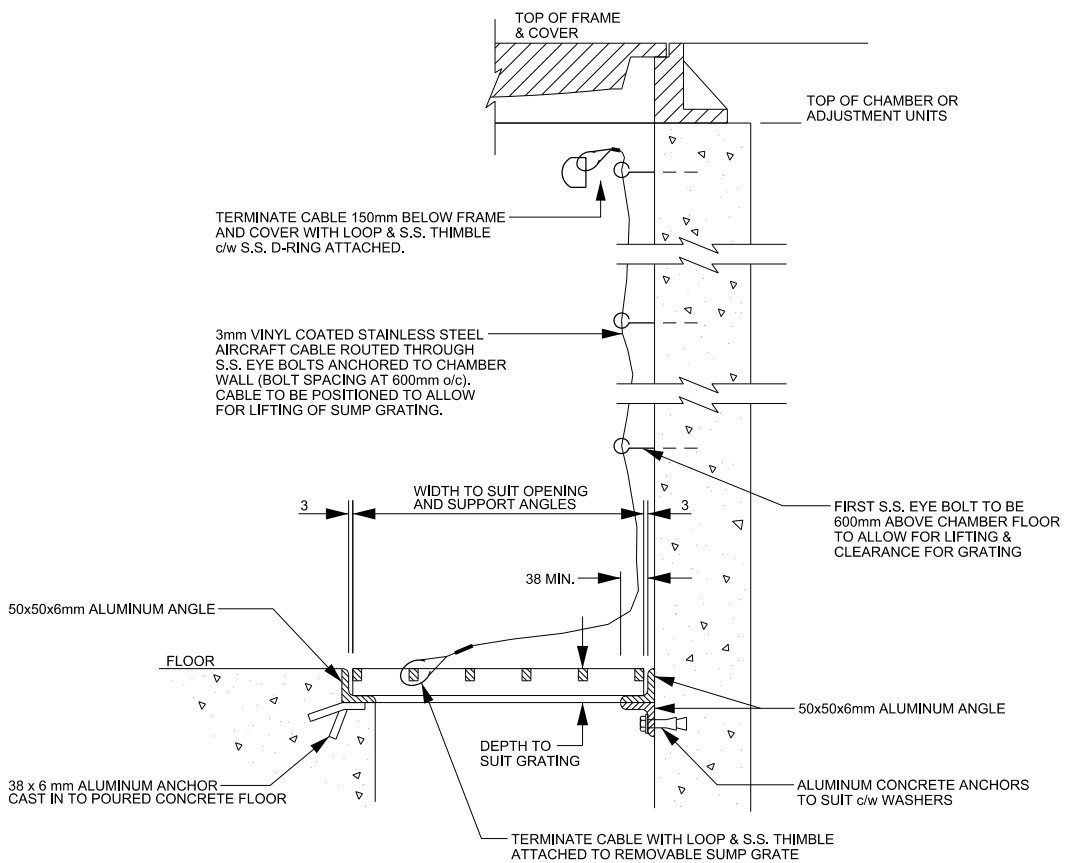


SECTION AT BASE OF CHAMBER



SUMP FRAME DETAIL

NOTE

1. SUMP FRAME TO BE ALL ALUMINUM WELDED CONSTRUCTION.
2. ALL ALUMINUM IN CONTACT WITH CONCRETE TO RECEIVE TWO COATS OF BITUMINOUS PAINT.



**PUBLIC WORKS
STANDARD DRAWING**

REV. DATE: APRIL 2014

APPROVED BY

DRAWN BY

A.P.

AINLEY GROUP

STD. DWG. NUMBER

SCALE

1-1-8

N.T.S.

TYPICAL CHAMBER SUMP DETAILS