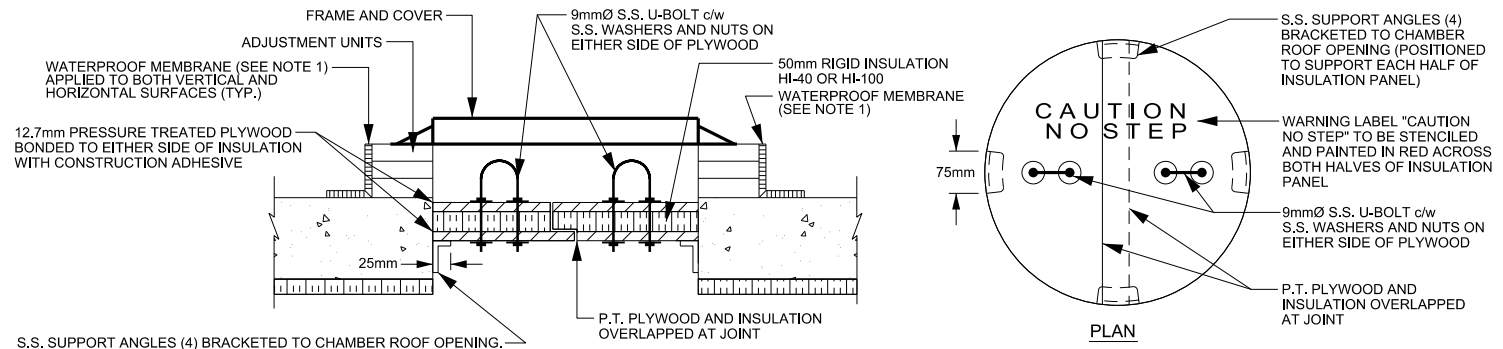


TYPICAL PRECAST MAINTENANCE HOLE WITH MONOLITHIC BASE AND TOP SECTION



ACCESS RISER INSULATION DETAIL

NOTE

1. WATERPROOF MEMBRANE TO BE "MEL-ROL" BY W.R. MEADOWS OF MILTON ONTARIO OR APPROVED EQUAL. EXTEND COMPLETELY AROUND ALL RISER SECTION JOINTS WITH A MINIMUM 300mm WIDE STRIP.
2. ALL INSULATION TO BE RIGID TYPE EXTRUDED POLYSTYRENE FOAM DOW HI-40 OR HI-100 OR APPROVED EQUAL. ALL CHAMBER INSULATION TO BE INSTALLED WITH CONSTRUCTION ADHESIVE AND TAPCON ANCHORS AT MAX. 600mm SPACING IN ALL DIRECTIONS (MIN. 2 ANCHORS PER SHEET OF INSULATION).



**PUBLIC WORKS
STANDARD DRAWING**

REV. DATE: APRIL 2014

APPROVED BY

DRAWN BY

A.P.

AINLEY GROUP

STD. DWG. NUMBER

SCALE

1-1-5

N.T.S.

**TYPICAL PRECAST CIRCULAR CHAMBER DETAILS
FOR NEW WATERMANS**