

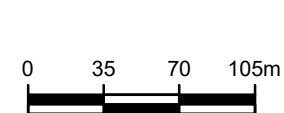
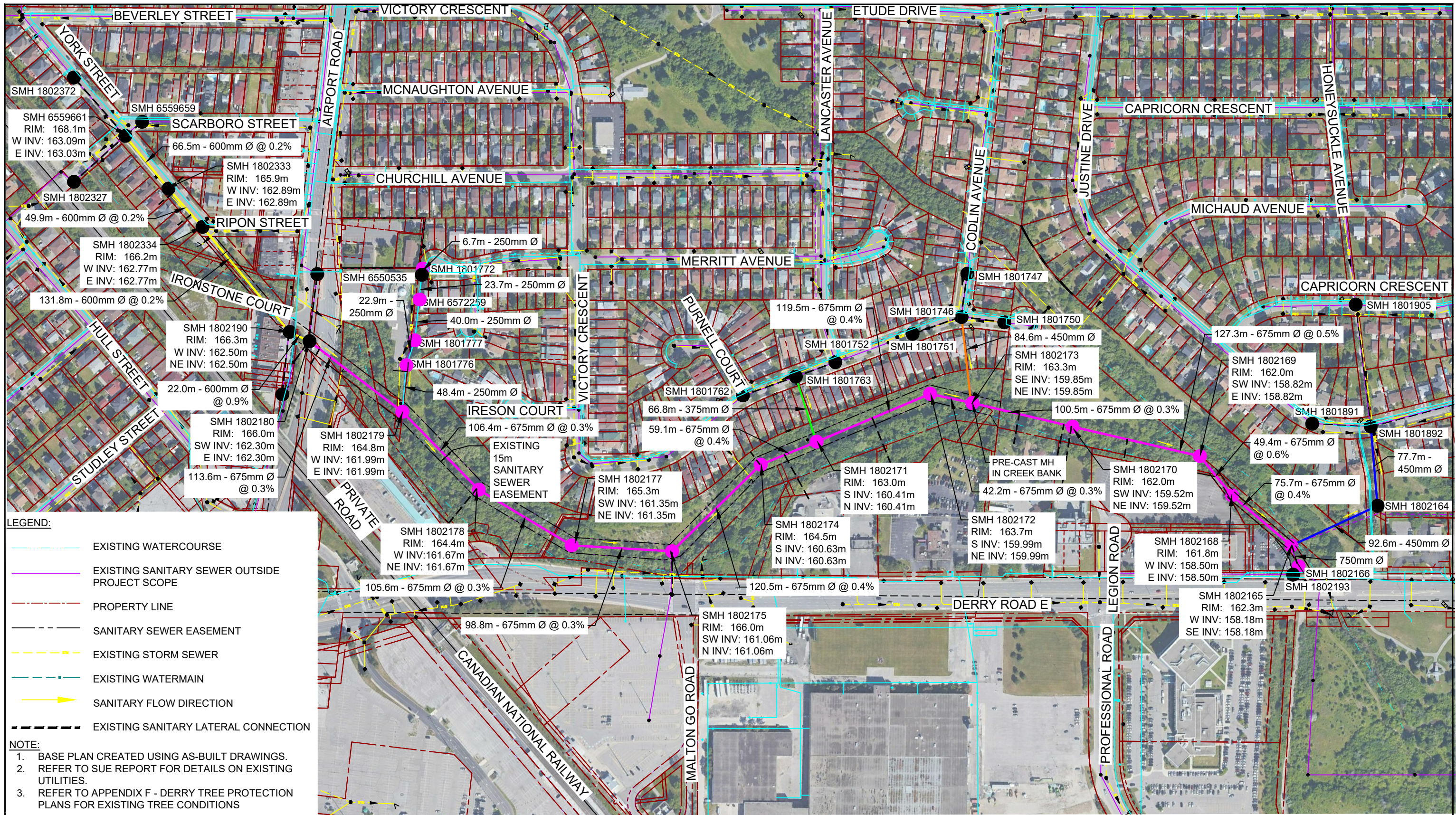
LEGEND:	
SMH 6508347	MAINTENANCE HOLES
SMH 6508347	MAINTENANCE HOLES TO BE REHABILITATED
250mm Ø SANITARY SEWER TO BE RELINED	
375mm Ø SANITARY SEWER TO BE RELINED	
450mm Ø SANITARY SEWER TO BE RELINED	
525mm Ø SANITARY SEWER TO BE RELINED	
600mm Ø SANITARY SEWER TO BE RELINED	
675mm Ø SANITARY SEWER TO BE RELINED	



CONSTRUCTION SERVICES FOR SANITARY LINING WORKS IN EASEMENTS IN VARIOUS LOCATIONS THROUGHOUT THE REGIONAL MUNICIPALITY OF PEEL, PROJECT 16-2300S  
**EXISTING CONDITIONS - LOCATION MAP**  
 DERRY ROAD SITE

Mar 15, 2021

FIGURE D.1



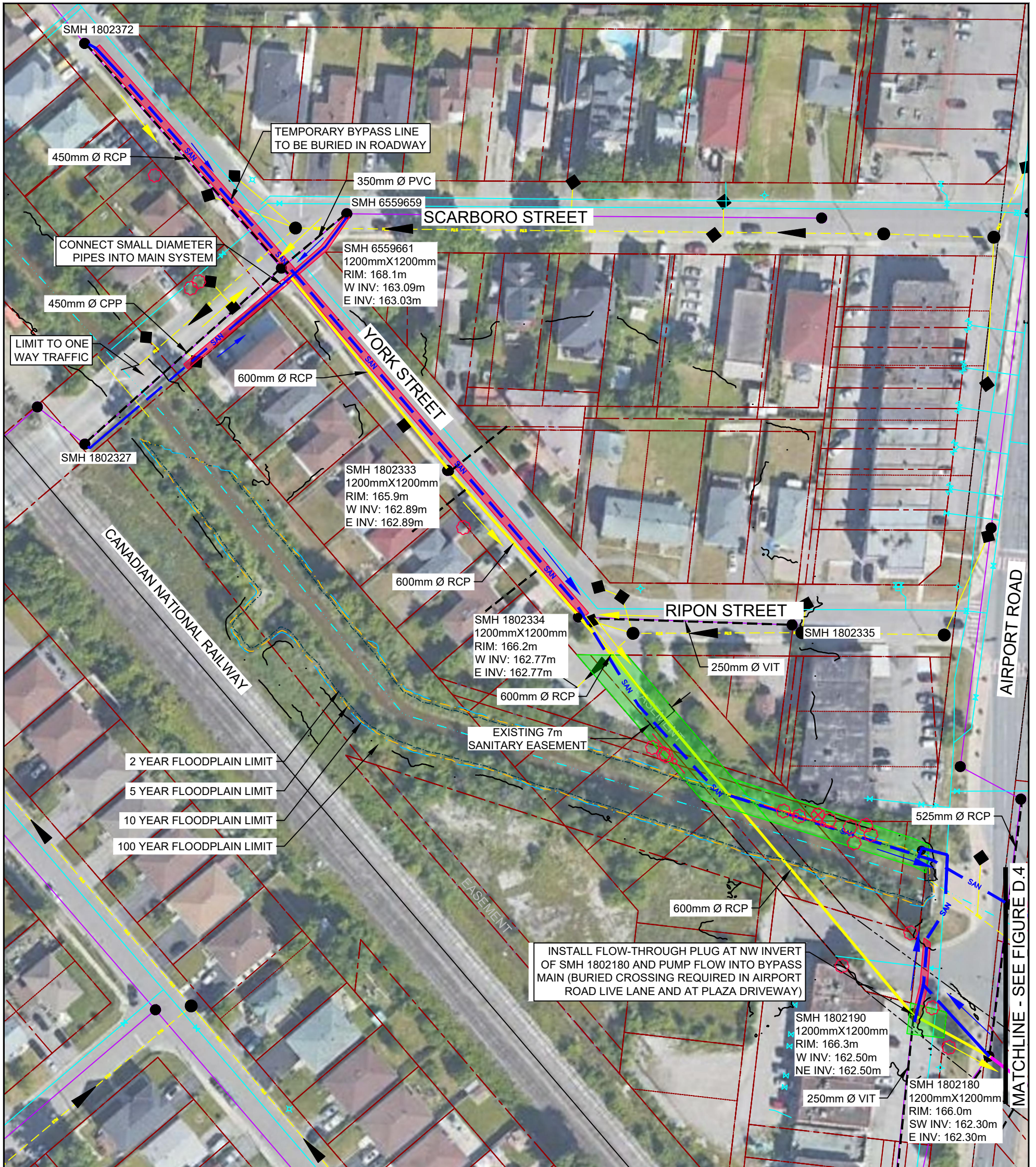
LEGEND:		LEGEND:	
SMH 6508347	MAINTENANCE HOLES	375mm Ø SANITARY SEWER TO BE RELINED	600mm Ø SANITARY SEWER TO BE RELINED
SMH 6508347	MAINTENANCE HOLES TO BE REHABILITATED	450mm Ø SANITARY SEWER TO BE RELINED	675mm Ø SANITARY SEWER TO BE RELINED
	250mm Ø SANITARY SEWER TO BE RELINED	525mm Ø SANITARY SEWER TO BE RELINED	



CONSTRUCTION SERVICES FOR SANITARY LINING WORKS IN EASEMENTS IN VARIOUS LOCATIONS THROUGHOUT THE REGIONAL MUNICIPALITY OF PEEL, PROJECT 16-2300S  
**REHABILITATION SITE PLAN**  
**DERRY ROAD SITE**

Mar 15, 2021

FIGURE D.2

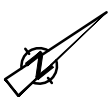
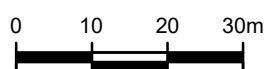


**LEGEND:**

SMH 6508347 ● MAINTENANCE HOLES	EXISTING WATERCOURSE	EXISTING SANITARY SEWER OUTSIDE PROJECT SCOPE	EXISTING WATERMAIN
SMH 6508347 ● MAINTENANCE HOLES TO BE REHABILITATED	2 YR TRCA FLOODPLAIN LIMITS	PROPERTY LINE	SANITARY FLOW DIRECTION
--- EXISTING SANITARY SEWER	5 YR TRCA FLOODPLAIN LIMITS	SANITARY SEWER EASEMENT	BYPASS FLOW DIRECTION
600mm Ø SANITARY SEWER TO BE RELINED	10 YR TRCA FLOODPLAIN LIMITS	EXISTING TREE	CONCEPTUAL ALIGNMENT - ABOVE GROUND BYPASS
675mm Ø SANITARY SEWER TO BE RELINED	100 YR TRCA FLOODPLAIN LIMITS	TREES TO BE REMOVED	CONCEPTUAL ALIGNMENT - BYPASS CROSSING/ BURIED LINE
		EXISTING STORM SEWER	LIMITS OF PERMITTED WORKZONE OUTSIDE OF RIGHT OF WAY
			ACCESS ROUTE
			TEMPORARY CONSTRUCTION FENCE/BARRIER

**NOTE:**

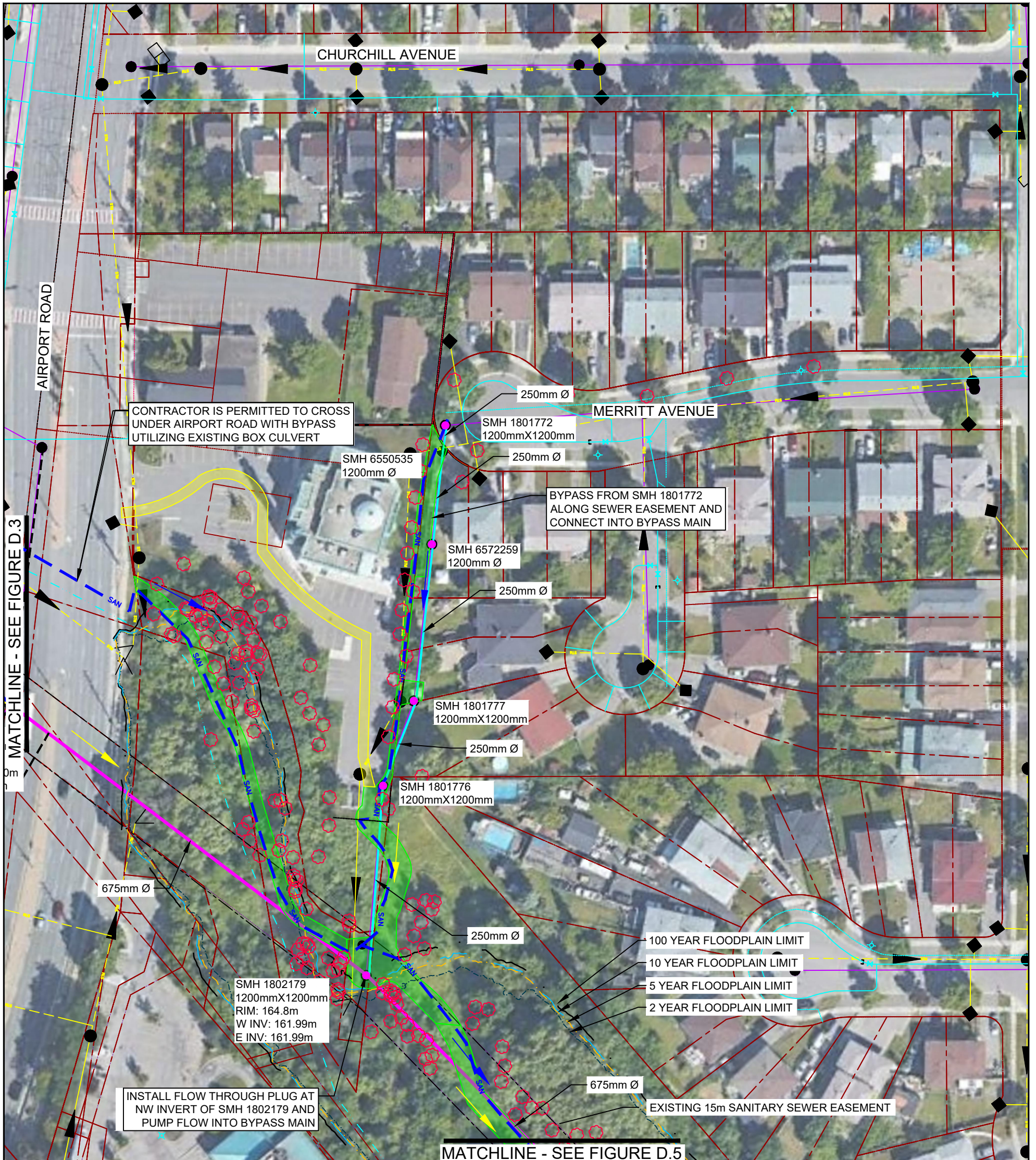
1. BASE PLAN CREATED USING AS-BUILT DRAWINGS.
2. FLOODPLAIN MAPPING HAS BEEN PROVIDED BY THE TRCA AND SHOWN ON THESE DRAWINGS FOR THE PURPOSES OF OBTAINING A PERMIT FROM THE TRCA. CONTRACTOR IS RESPONSIBLE FOR CONFIRMING FLOODPLAIN LIMITS WITH THE TRCA IN ADVANCE OF PERFORMING ANY WORK WITHIN OR ADJACENT TO THE TRCA REGULATED LIMITS.
3. THE REGION DOES NOT HAVE EASEMENTS FOR ALL PRIVATE PROPERTY WORKS ON THE DERRY GREENWAY PROJECT SITE. ALL WORKS WITHIN PRIVATE PROPERTY SHALL REMAIN WITHIN THE LIMITS AS IDENTIFIED ON THIS DRAWING.



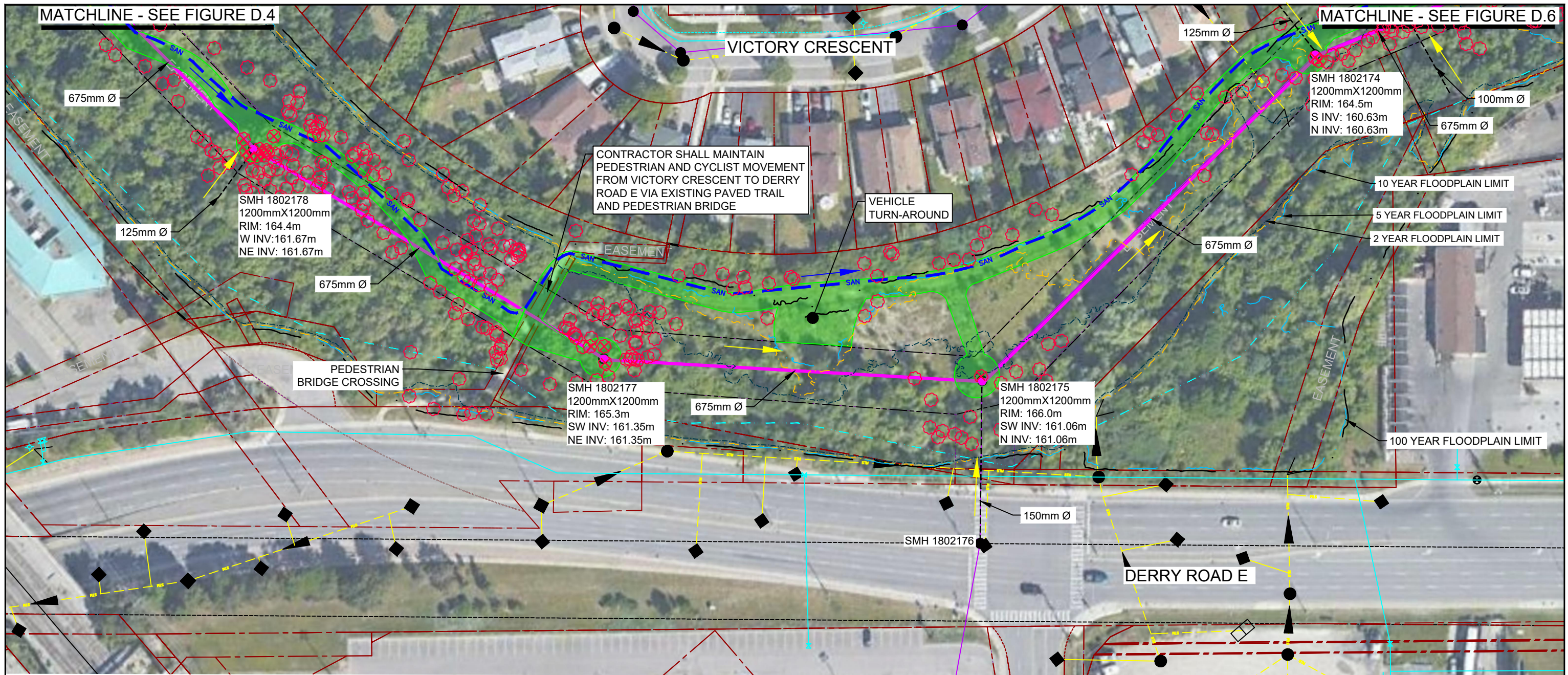
CONSTRUCTION SERVICES FOR SANITARY LINING WORKS IN EASEMENTS IN VARIOUS LOCATIONS THROUGHOUT THE REGIONAL MUNICIPALITY OF PEEL, PROJECT 16-2300S  
**TEMPORARY WORKS AND ACCESS (FIGURE 1 OF 5)**  
**DERRY ROAD SITE**

Mar 15, 2021

**FIGURE D.3**



LEGEND:	
SMH 6508347 ● MAINTENANCE HOLES	EXISTING WATERCOURSE
SMH 6508347 ● MAINTENANCE HOLES TO BE REHABILITATED	2 YR TRCA FLOODPLAIN LIMITS
--- EXISTING SANITARY SEWER	5 YR TRCA FLOODPLAIN LIMITS
--- 250mm Ø SANITARY SEWER TO BE RELINED	10 YR TRCA FLOODPLAIN LIMITS
--- 675mm Ø SANITARY SEWER TO BE RELINED	100 YR TRCA FLOODPLAIN LIMITS
NOTE:	EXISTING SANITARY SEWER OUTSIDE PROJECT SCOPE
1. BASE PLAN CREATED USING AS-BUILT DRAWINGS.	PROPERTY LINE
2. FLOODPLAIN MAPPING HAS BEEN PROVIDED BY THE TRCA AND SHOWN ON THESE DRAWINGS FOR THE PURPOSES OF OBTAINING A PERMIT FROM THE TRCA. CONTRACTOR IS RESPONSIBLE FOR CONFIRMING FLOODPLAIN LIMITS WITH THE TRCA IN ADVANCE OF PERFORMING ANY WORK WITHIN OR ADJACENT TO THE TRCA REGULATED LIMITS.	SANITARY SEWER EASEMENT
3. THE REGION DOES NOT HAVE EASEMENTS FOR ALL PRIVATE PROPERTY WORKS ON THE DERRY GREENWAY PROJECT SITE. ALL WORKS WITHIN PRIVATE PROPERTY SHALL REMAIN WITHIN THE LIMITS AS IDENTIFIED ON THIS DRAWING.	EXISTING TREE
4. REFER TO TREE PROTECTION, TREE REMOVALS, AND EROSION CONTROL DRAWINGS FOR ENVIRONMENTAL SITE PROTECTION.	EXISTING STORM SEWER
	EXISTING WATERMAIN
	SANITARY FLOW DIRECTION
	BYPASS FLOW DIRECTION
	CONCEPTUAL ALIGNMENT - ABOVE GROUND BYPASS
	CONCEPTUAL ALIGNMENT - BYPASS CROSSING/ BURIED LINE
	LIMITS OF PERMITTED WORKZONE OUTSIDE OF RIGHT OF WAY
	ACCESS ROUTE
	TEMPORARY CONSTRUCTION FENCE/BARRIER

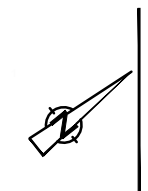
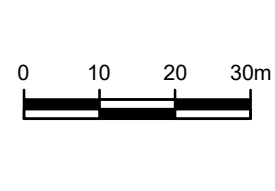


**LEGEND:**

SMH 6508347 ● MAINTENANCE HOLES	--- 2 YR TRCA FLOODPLAIN LIMITS	--- PROPERTY LINE	→ SANITARY FLOW DIRECTION	○ TEMPORARY CONSTRUCTION FENCE/BARRIER
SMH 6508347 ● MAINTENANCE HOLES TO BE REHABILITATED	--- 5 YR TRCA FLOODPLAIN LIMITS	--- SANITARY SEWER EASEMENT	→ BYPASS FLOW DIRECTION	
--- EXISTING SANITARY SEWER	--- 10 YR TRCA FLOODPLAIN LIMITS	○ EXISTING TREE	--- SAN --- CONCEPTUAL ALIGNMENT - ABOVE GROUND BYPASS	
--- 675mm Ø SANITARY SEWER TO BE RELINED	--- 100 YR TRCA FLOODPLAIN LIMITS	⊗ TREES TO BE REMOVED	--- CONCEPTUAL ALIGNMENT - BYPASS CROSSING/ BURIED LINE	
--- EXISTING WATERCOURSE	--- EXISTING SANITARY SEWER OUTSIDE PROJECT SCOPE	--- EXISTING STORM SEWER	--- LIMITS OF PERMITTED WORKZONE OUTSIDE OF RIGHT OF WAY	
		--- EXISTING WATERMAIN	--- ACCESS ROUTE	

**NOTES:**

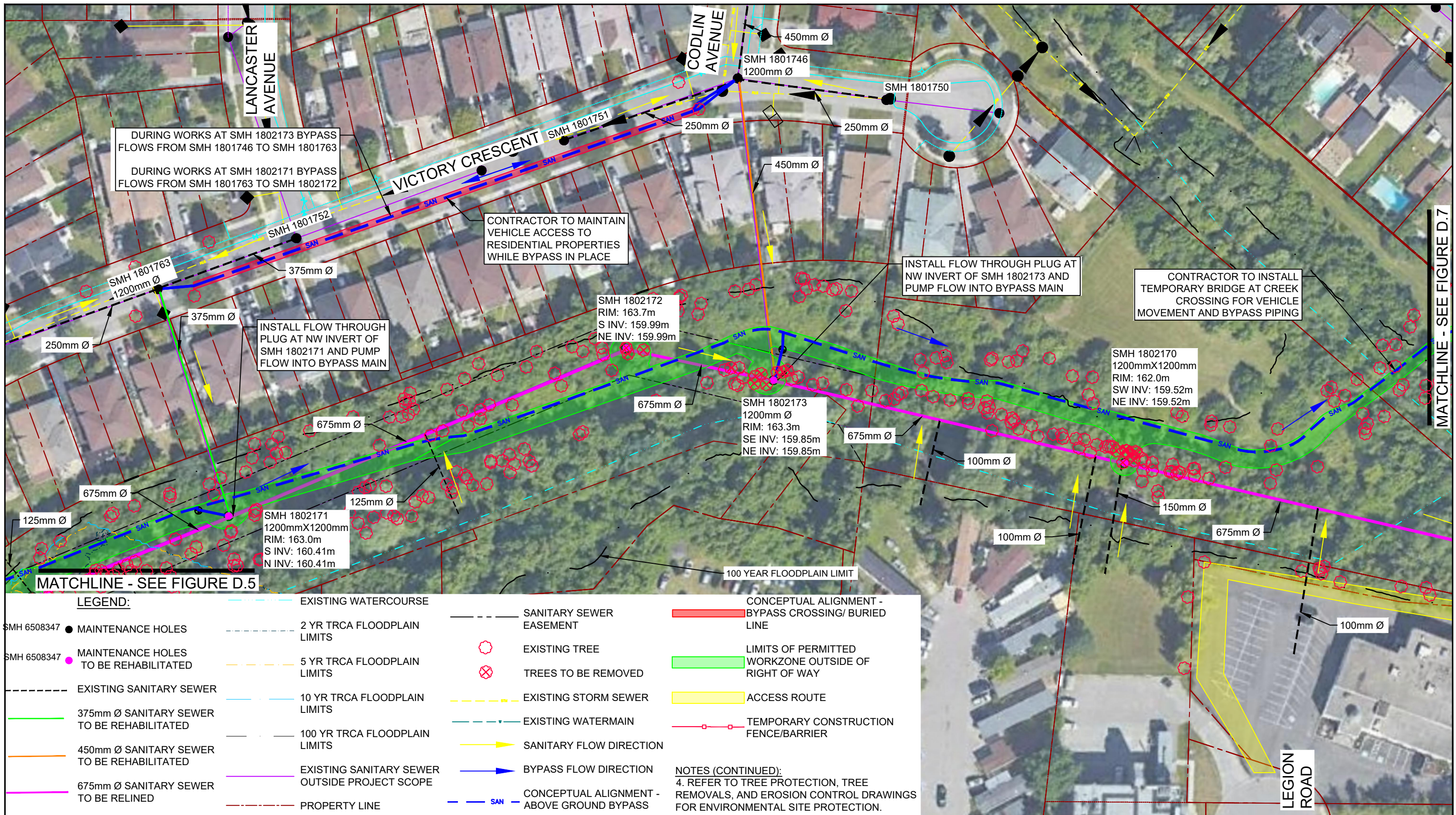
1. BASE PLAN CREATED USING AS-BUILT DRAWINGS.
2. FLOODPLAIN MAPPING HAS BEEN PROVIDED BY THE TRCA AND SHOWN ON THESE DRAWINGS FOR THE PURPOSES OF OBTAINING A PERMIT FROM THE TRCA. CONTRACTOR IS RESPONSIBLE FOR CONFIRMING FLOODPLAIN LIMITS WITH THE TRCA IN ADVANCE OF PERFORMING ANY WORK WITHIN OR ADJACENT TO THE TRCA REGULATED LIMITS.
3. THE REGION DOES NOT HAVE EASEMENTS FOR ALL PRIVATE PROPERTY WORKS ON THE DERRY GREENWAY PROJECT SITE. ALL WORKS WITHIN PRIVATE PROPERTY SHALL REMAIN WITHIN THE LIMITS AS IDENTIFIED ON THIS DRAWING.
4. REFER TO TREE PROTECTION, TREE REMOVALS, AND EROSION CONTROL DRAWINGS FOR ENVIRONMENTAL SITE PROTECTION.



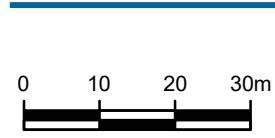
CONSTRUCTION SERVICES FOR SANITARY LINIGN WORKS IN EASEMENTS  
 IN VARIOUS LOCATIONS THROUGHOUT THE REGIONAL MUNICIPALITY  
 OF PEEL, PROJECT 16-2300S  
**TEMPORARY WORKS AND ACCESS (FIGURE 3 OF 5)**  
**DERRY ROAD SITE**

Mar 15, 2021

**FIGURE D.5**



LEGEND:		NOTES (CONTINUED):	
SMH 6508347 ● MAINTENANCE HOLES	EXISTING WATERCOURSE	CONCEPTUAL ALIGNMENT - BYPASS CROSSING/ BURIED LINE	4. REFER TO TREE PROTECTION, TREE REMOVALS, AND EROSION CONTROL DRAWINGS FOR ENVIRONMENTAL SITE PROTECTION.
SMH 6508347 ● MAINTENANCE HOLES TO BE REHABILITATED	2 YR TRCA FLOODPLAIN LIMITS	LIMITS OF PERMITTED WORKZONE OUTSIDE OF RIGHT OF WAY	
EXISTING SANITARY SEWER	5 YR TRCA FLOODPLAIN LIMITS	ACCESS ROUTE	
375mm Ø SANITARY SEWER TO BE REHABILITATED	10 YR TRCA FLOODPLAIN LIMITS	TEMPORARY CONSTRUCTION FENCE/BARRIER	
450mm Ø SANITARY SEWER TO BE REHABILITATED	100 YR TRCA FLOODPLAIN LIMITS		
675mm Ø SANITARY SEWER TO BE RELINED	EXISTING SANITARY SEWER OUTSIDE PROJECT SCOPE		
	PROPERTY LINE		
	SANITARY SEWER EASEMENT		
	EXISTING TREE		
	TREES TO BE REMOVED		
	EXISTING STORM SEWER		
	EXISTING WATERMAIN		
	SANITARY FLOW DIRECTION		
	BYPASS FLOW DIRECTION		
	CONCEPTUAL ALIGNMENT - ABOVE GROUND BYPASS		



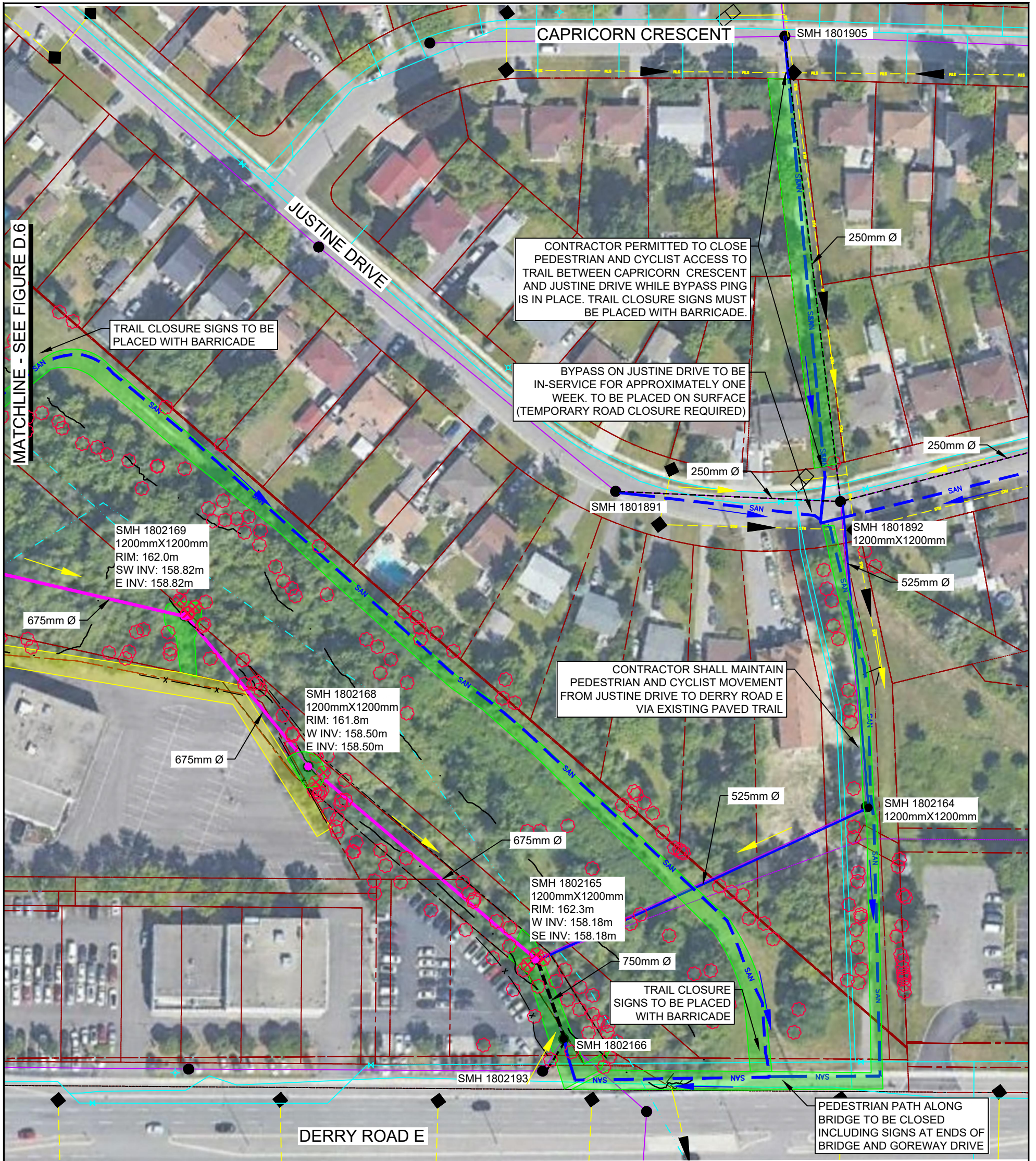
- NOTES:**
1. BASE PLAN CREATED USING AS-BUILT DRAWINGS.
  2. FLOODPLAIN MAPPING HAS BEEN PROVIDED BY THE TRCA AND SHOWN ON THESE DRAWINGS FOR THE PURPOSES OF OBTAINING A PERMIT FROM THE TRCA. CONTRACTOR IS RESPONSIBLE FOR CONFIRMING FLOODPLAIN LIMITS WITH THE TRCA IN ADVANCE OF PERFORMING ANY WORK WITHIN OR ADJACENT TO THE TRCA REGULATED LIMITS.
  3. THE REGION DOES NOT HAVE EASEMENTS FOR ALL PRIVATE PROPERTY WORKS ON THE DERRY GREENWAY PROJECT SITE. ALL WORKS WITHIN PRIVATE PROPERTY SHALL REMAIN WITHIN THE LIMITS AS IDENTIFIED ON THIS DRAWING.



CONSTRUCTION SERVICES FOR SANITARY LINING WORKS IN EASEMENTS IN VARIOUS LOCATIONS THROUGHOUT THE REGIONAL MUNICIPALITY OF PEEL, PROJECT 16-2300S  
**TEMPORARY WORKS AND ACCESS (FIGURE 4 OF 5)**  
**DERRY ROAD SITE**

Mar 15, 2021

**FIGURE D.6**

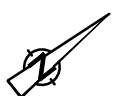
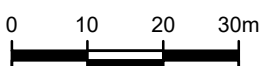


**LEGEND:**

SMH 6508347 ● MAINTENANCE HOLES	EXISTING WATERCOURSE	EXISTING SANITARY SEWER OUTSIDE PROJECT SCOPE	BYPASS FLOW DIRECTION
SMH 6508347 ● MAINTENANCE HOLES TO BE REHABILITATED	2 YR TRCA FLOODPLAIN LIMITS	PROPERTY LINE	CONCEPTUAL ALIGNMENT - ABOVE GROUND BYPASS
----- EXISTING SANITARY SEWER	5 YR TRCA FLOODPLAIN LIMITS	SANITARY SEWER EASEMENT	CONCEPTUAL ALIGNMENT - BYPASS CROSSING/ BURIED LINE
250mm Ø SANITARY SEWER TO BE RELINED	10 YR TRCA FLOODPLAIN LIMITS	EXISTING TREE	LIMITS OF PERMITTED WORKZONE OUTSIDE OF RIGHT OF WAY
675mm Ø SANITARY SEWER TO BE RELINED	100 YR TRCA FLOODPLAIN LIMITS	EXISTING STORM SEWER	ACCESS ROUTE
		EXISTING WATERMAIN	TEMPORARY CONSTRUCTION FENCE/BARRIER
		SANITARY FLOW DIRECTION	

**NOTE:**

1. BASE PLAN CREATED USING AS-BUILT DRAWINGS.
2. FLOODPLAIN MAPPING HAS BEEN PROVIDED BY THE TRCA AND SHOWN ON THESE DRAWINGS FOR THE PURPOSES OF OBTAINING A PERMIT FROM THE TRCA. CONTRACTOR IS RESPONSIBLE FOR CONFIRMING FLOODPLAIN LIMITS WITH THE TRCA IN ADVANCE OF PERFORMING ANY WORK WITHIN OR ADJACENT TO THE TRCA REGULATED LIMITS.
3. THE REGION DOES NOT HAVE EASEMENTS FOR ALL PRIVATE PROPERTY WORKS ON THE DERRY GREENWAY PROJECT SITE. ALL WORKS WITHIN PRIVATE PROPERTY SHALL REMAIN WITHIN THE LIMITS AS IDENTIFIED ON THIS DRAWING.
4. REFER TO TREE PROTECTION, TREE REMOVALS, AND EROSION CONTROL DRAWINGS FOR ENVIRONMENTAL SITE PROTECTION.



CONSTRUCTION SERVICES FOR SANITARY LINING WORKS IN EASEMENTS IN VARIOUS LOCATIONS THROUGHOUT THE REGIONAL MUNICIPALITY OF PEEL, PROJECT 16-2300S  
**TEMPORARY WORKS AND ACCESS (FIGURE 5 OF 5)**  
**DERRY ROAD SITE**

Mar 15, 2021

**FIGURE D.7**