

May 17, 2023

RE: Update on Peel Region's CWELCC Expansion Plan

Dear Child Care Provider,

As follow up to the [Regional memo](#) shared on January 24, 2023 and the system-wide teleconference in February, we are writing to update you on our Canada-Wide Early Learning and Child Care (CWELCC) Expansion Plan and next steps.

We are still waiting for the Ministry of Education to release guidelines and funding related to the CWELCC Expansion Plan, including written confirmation of our proposed targets. We anticipate receiving this information from the Ministry this Spring. We will continue to work with the sector to address concerns and questions regarding expansion in Peel.

The CWELCC Expansion Plan will include two components:

1. 2023 CWELCC Expression of Interest process
2. CWELCC Multi-year Expansion process

2023 CWELCC Expression of Interest Process

The 2023 CWELCC Expression of Interest process is a targeted approach to support child care providers who had an application in the Child Care Licensing System (CCLS) before January 1, 2023. This process will support child care providers that were in the system prior to the Ministry's direction (as per their memo released December 19, 2022) related to CWELCC expansion focused on targeted growth neighbourhoods, and changes to the licence application processes which took effect January 1, 2023. Child care providers who are eligible for this process will receive an email from the Region.

CWELCC Multi-year Expansion Process

The CWELCC Multi-year Expansion process will be focused on achieving the 7,622 new child care spaces (1,145 school-based and 6,477 community-based) to be realized by the end of 2026. Once we receive Ministry direction on CWELCC Expansion, our next steps include:

1. Finalize and release Peel's CWELCC Expansion Policy and Application Process to the entire sector.
 - o Child care providers with an application date in the CCLS after January 1, 2023, or providers planning to expand will need to apply to the Region's CWELCC Multi-year Expansion Process. Applying does not guarantee approval into the 2023 CWELCC program and is subject to Peel's review and funding availability.
 - o We will review all applications to assess if they meet the needs of diverse and underserved populations in Peel in alignment with the Ministry's Access and Inclusion Framework (released on December 19, 2022) which directs that child care expansion should be targeted to

**Human
Services**

10 Peel Centre Dr.
Suite B
PO Box 2136, STN B
Brampton, ON
L6T 0E3
EarlyYearsSystem
Division@peelregion.ca
tel: 905-791-1585

peelregion.ca

communities that need it the most. We will prioritize those applications that are expanding within the 13 priority communities in Peel, accepted by [Regional Council](#) on March 9, 2023. See **Appendix 1**.

- Applications will also be reviewed to assess if they meet the Ministry's eligibility requirements to participate in CWELCC as well as meet the [Region's system priorities](#). Details about the Region's priorities for assessing applications will be released as part of Peel's CWELCC Expansion Policy.
2. Engage the child care sector in Peel, including both centre-based child care and home-based child care programs, to identify opportunities for expansion to achieve our targets.
 3. Hold a system-wide information session to answer any questions you may have on Peel's CWELCC Expansion Policy and Application Process.

To support the Ministry's goal to build an inclusive, accessible, and affordable child care system, child care providers who are approved to participate in Peel's CWELCC program will also be required to comply with the following:

- Accept and be inclusive children in receipt of child care subsidy;
- Accept and be inclusive of children with special needs by authentically participating in [Peel Inclusion Resources Services](#) (PIRS); and
- Participate in continuous quality enhancement initiatives like Raising the Bar in Peel and professional learning opportunities through [Child Development Resource Connection Peel](#).

We have included some Questions and Answers in **Appendix 2** of this memo. If you have additional questions, please contact your Early Years Specialist or email us at EarlyYearsSystemDivision@peelregion.ca.

Thank you for your ongoing commitment and dedication to support families and the child sector in Peel. We look forward to continued collaboration with your agency.

Sincerely,

Early Years and Child Care Services Division
Region of Peel

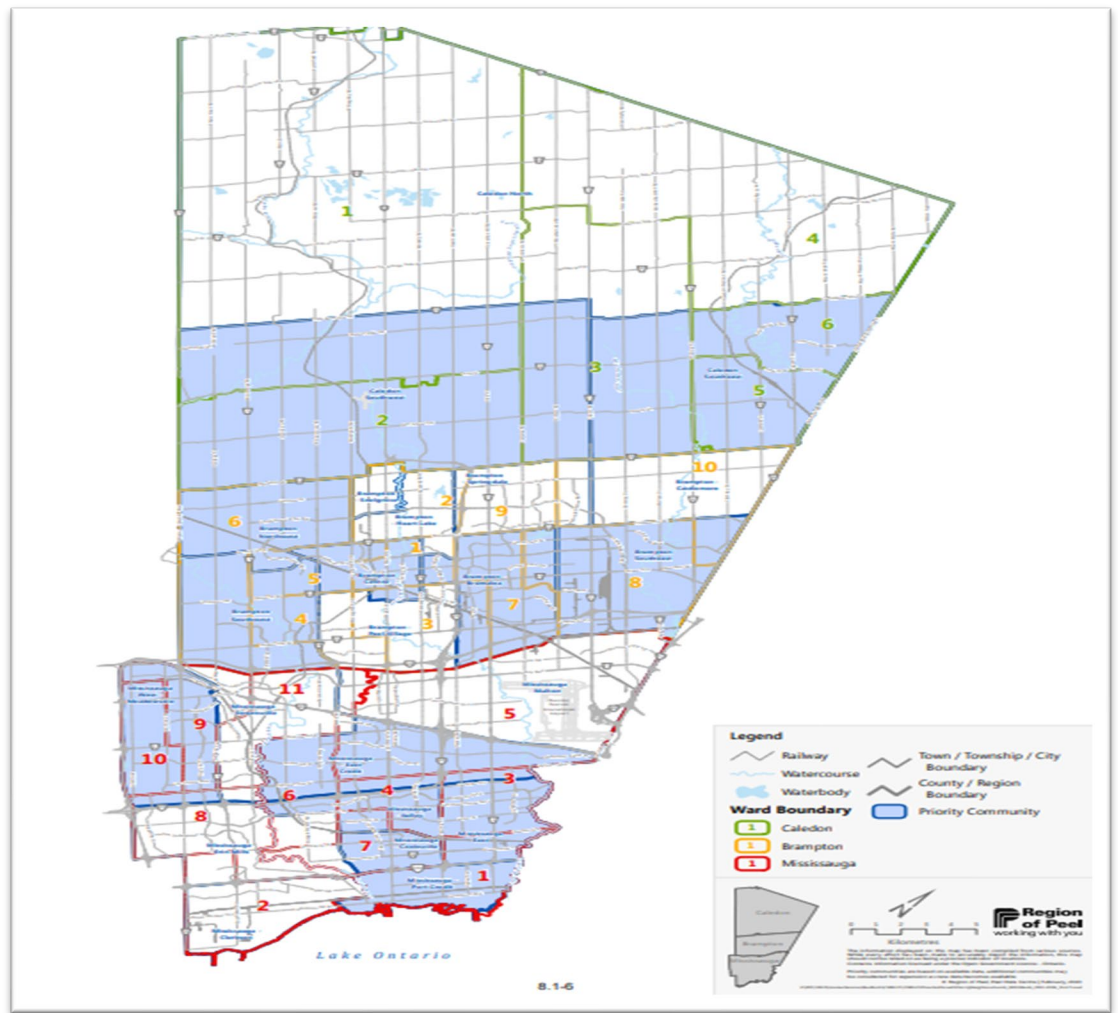
APPENDIX 1: Priority Communities for CWELCC Child Care Expansion

Map of the 13 priority communities in Peel identified using child care demand data and community well-being indicators.

Human Services

10 Peel Centre Dr.
Suite B
PO Box 2136, STN B
Brampton, ON
L6T 0E3
EarlyYearsSystem
Division@peelregion.ca
tel: 905-791-1585

peelregion.ca



Priority Communities

- Mississauga Valley
- Mississauga West-Meadowvale
- Mississauga Cooksville
- Mississauga Port Credit
- Brampton Bramalea
- Brampton Northwest
- Mississauga East
- Brampton Southwest
- Brampton Southeast
- Brampton Centre
- Mississauga East Credit
- Caledon Southwest
- Caledon Southeast

**Human
Services**

10 Peel Centre Dr.
Suite B
PO Box 2136, STN B
Brampton, ON
L6T 0E3
EarlyYearsSystem
Division@peelregion.ca
tel: 905-791-1585

peelregion.ca

APPENDIX 2: CWELCC EXPANSION IN PEEL – QUESTIONS AND ANSWERS

1. Is the application process different for child care providers who are planning to expand after January 1, 2023?

Yes our expansion application process will be different as it includes two components:

1. 2023 CWELCC Expression of Interest process - child care providers who had an application in the Child Care Licensing System (CCLS) before January 1, 2023, are eligible to apply through the 2023 CWELCC Expression of Interest Process.
2. CWELCC Multi-year Expansion process - child care providers with an application date in the CCLS after January 1, 2023, or providers planning to expand will need to apply to the Region's CWELCC Multi-year Expansion Process. These applications will be reviewed to assess if they meet the Ministry's eligibility requirements to participate in CWELCC as well as meet the [Region's system priorities](#).

2. Why are there two components to the Region's Expansion Plan?

- We continue to wait for the Ministry of Education's guidelines and funding related to the CWELCC Expansion Plan, including written confirmation of our proposed targets.
- We have developed a separate EOI process to support child care providers that were in the system prior to the Ministry's direction shared on December 19, 2022, related to CWELCC expansion which must be focused on targeted growth neighbourhoods, and changes to the licence application processes which took effect January 1, 2023.

3. When will the Region release its Expansion Policy and Process?

- At this time, we are still waiting for the Ministry of Education's guidelines and funding related to the CWELCC Expansion Plan, including confirmation of our proposed targets. The Ministry has indicated this will occur sometime in the Spring.
- Once we receive this information, we will need time to review it to understand the requirements for the Region and what it means for child care providers in Peel. We expect to release our 2023 CWELCC Expansion Policy in late spring/early summer contingent on receiving the Ministry's guidelines.
- When we release our Expansion Policy and Process, we will also hold a system-wide teleconference to support the sector with any additional questions.

4. Will there be enough expansion funding to support all applicants?

- We are still awaiting the Ministry's guidelines and funding related to the CWELCC Expansion Plan for Peel, along with written confirmation and approval of our targets.

**Human
Services**

10 Peel Centre Dr.
Suite B
PO Box 2136, STN B
Brampton, ON
L6T 0E3
EarlyYearsSystem
Division@peelregion.ca
tel: 905-791-1585

peelregion.ca

- Meeting the needs of diverse and underserved communities in Peel is our top priority and we will continue to work with the Ministry to ensure they are aware of Peel's demand for child care spaces.

5. Is licensed home child care included in the Region's CWELCC Expansion Plan?

- Yes, new spaces will be in both centre-based and home child care settings.
- We will be engaging centre-based child care providers and home child care agencies, to identify opportunities for expansion to achieve our targets.

6. What does it mean to “accept and be inclusive of children in receipt of child care subsidy”; “accept and be inclusive of children with special needs by authentically participating in [Peel Inclusion Resources Services](#); and “participate in continuous quality enhancement initiatives like Raising the Bar in Peel and professional learning opportunities through [Child Development Resource Connection Peel](#)”?

- To support these requirements child care providers who are approved to participate in Peel's CWELCC program will receive:
 - child care subsidy funding to cover the cost of care for families who receive subsidy;
 - access to Resource Consultants' supports and [Enhanced Program Support Funding](#);
 - access to Early Years Specialist staff supports;
 - access to continuous quality enhancement initiatives like Raising the Bar in Peel and professional learning through [Child Development Resource Connection Peel](#); and
 - other funding supports such as general operating and special purpose funding.
- An Early Years Specialist staff will provide more information and work with these child care providers through the onboarding process.