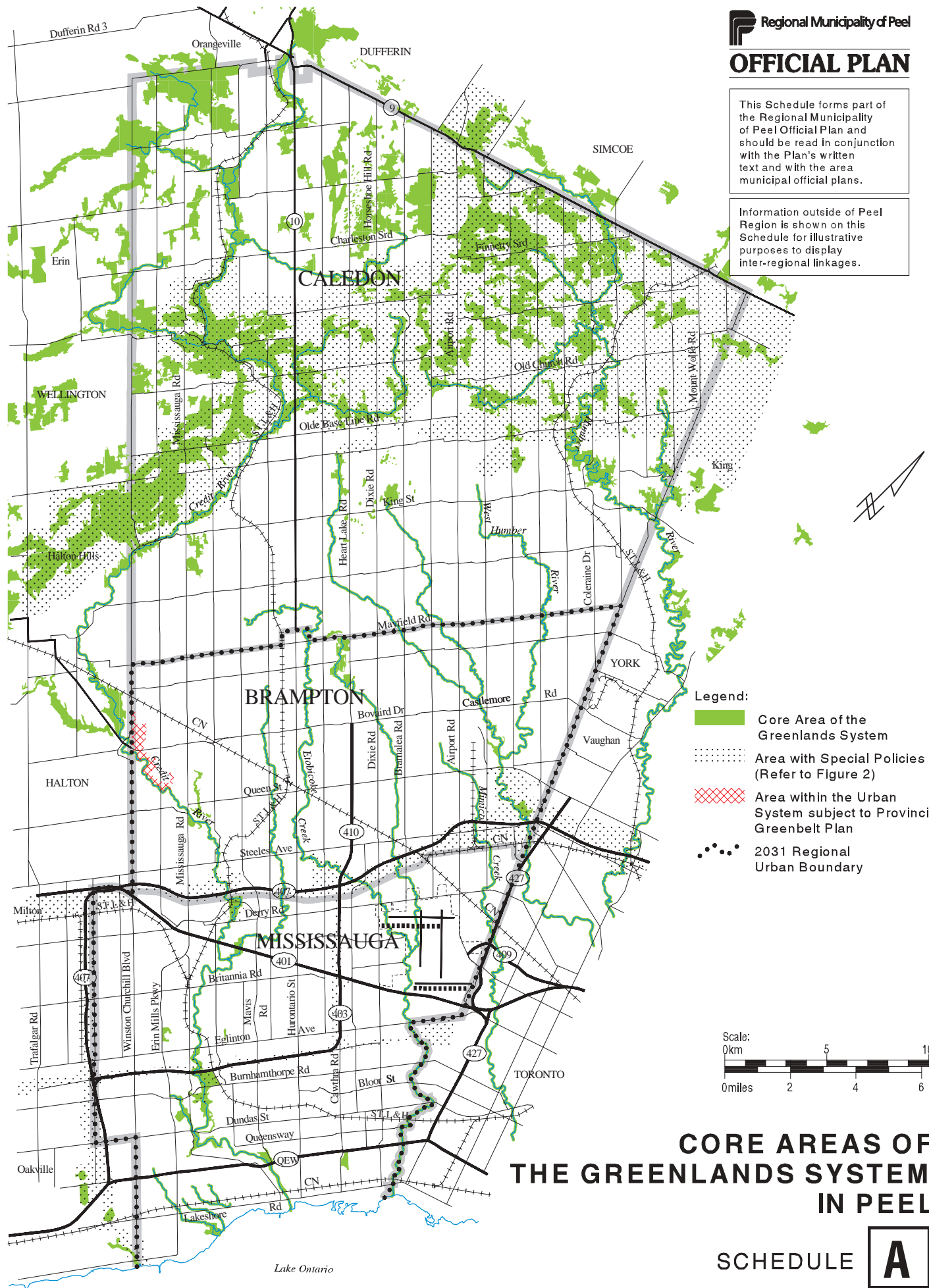


This Schedule forms part of the Regional Municipality of Peel Official Plan and should be read in conjunction with the Plan's written text and with the area municipal official plans.

Information outside of Peel Region is shown on this Schedule for illustrative purposes to display inter-regional linkages.

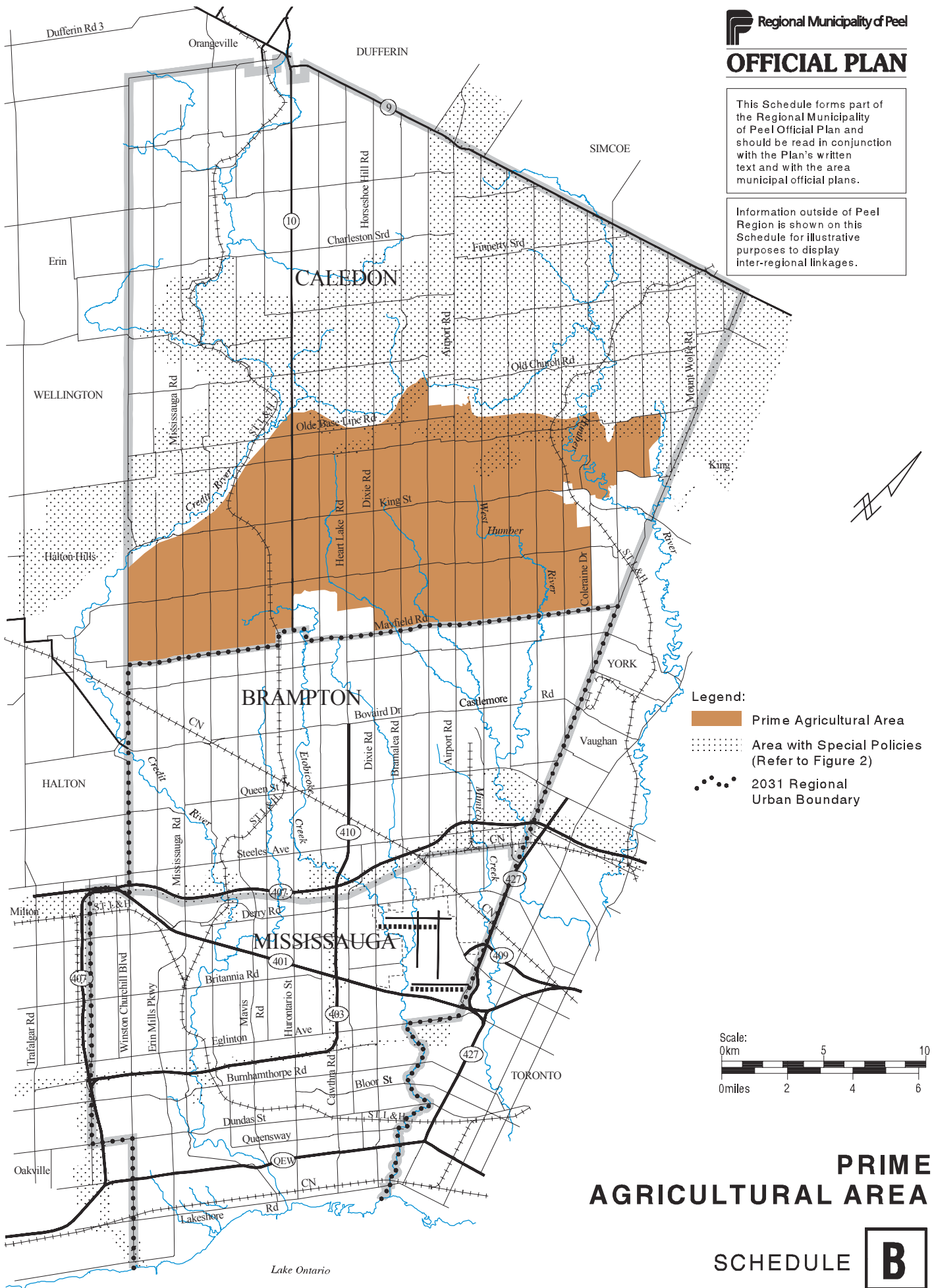


**CORE AREAS OF THE GREENLANDS SYSTEM IN PEEL**

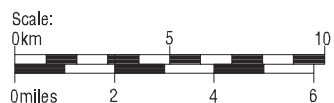
# OFFICIAL PLAN

This Schedule forms part of the Regional Municipality of Peel Official Plan and should be read in conjunction with the Plan's written text and with the area municipal official plans.

Information outside of Peel Region is shown on this Schedule for illustrative purposes to display inter-regional linkages.



- Legend:**
- Prime Agricultural Area
  - Area with Special Policies (Refer to Figure 2)
  - 2031 Regional Urban Boundary



## PRIME AGRICULTURAL AREA




### SCHEDULE B

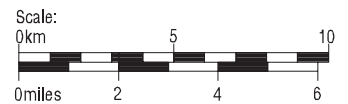
This Schedule forms part of the Regional Municipality of Peel Official Plan and should be read in conjunction with the Plan's written text and with the area municipal official plans.

Information outside of Peel Region is shown on this Schedule for illustrative purposes to display inter-regional linkages.

High Potential Mineral Aggregate Resource Area within the 2031 Urban Boundary is subject to policy in section 5.3.4.2.2f.

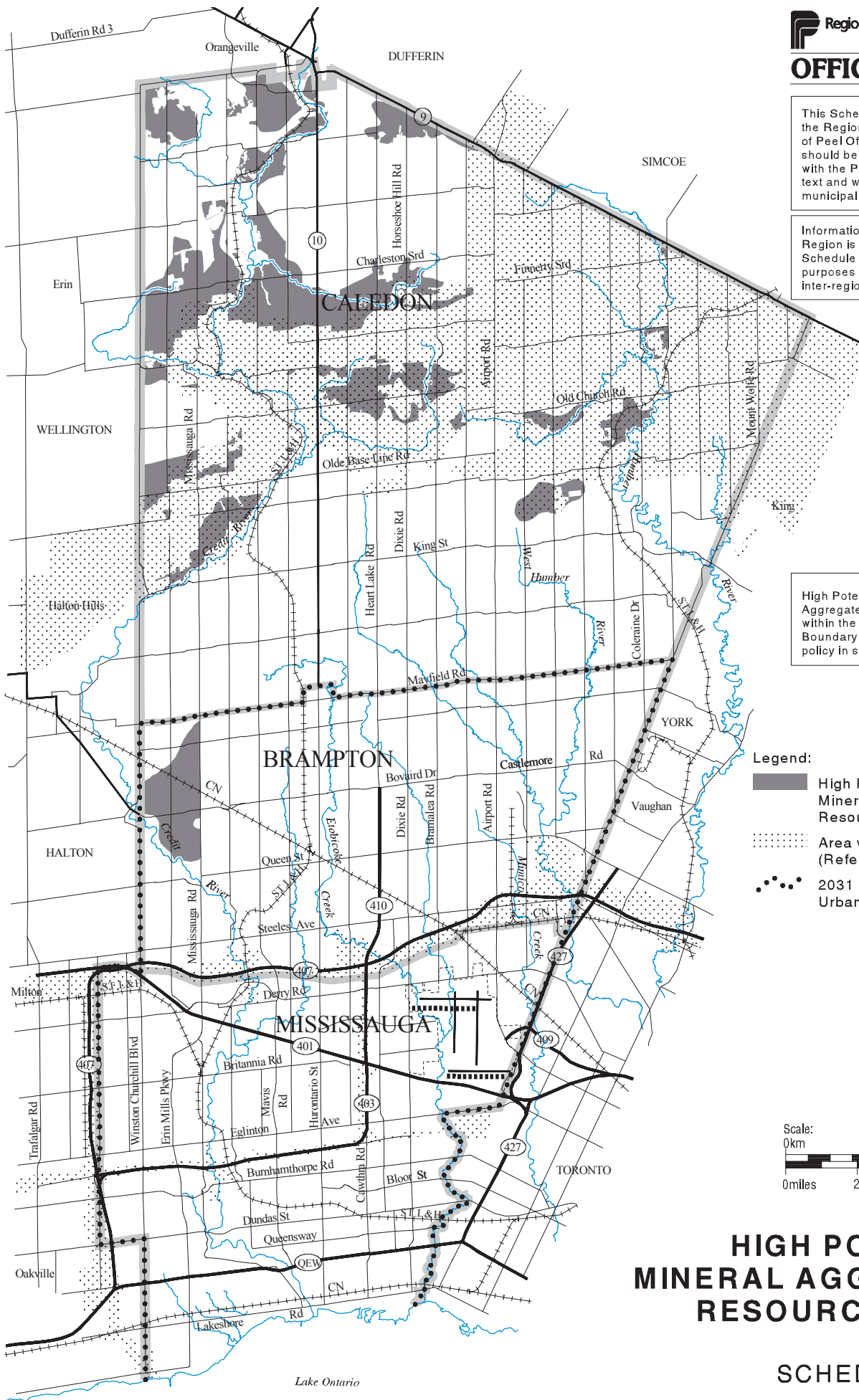
**Legend:**

-  High Potential Mineral Aggregate Resource Area
-  Area with Special Policies (Refer to Figure 2)
-  2031 Regional Urban Boundary



**HIGH POTENTIAL MINERAL AGGREGATE RESOURCE AREAS**

SCHEDULE **C**





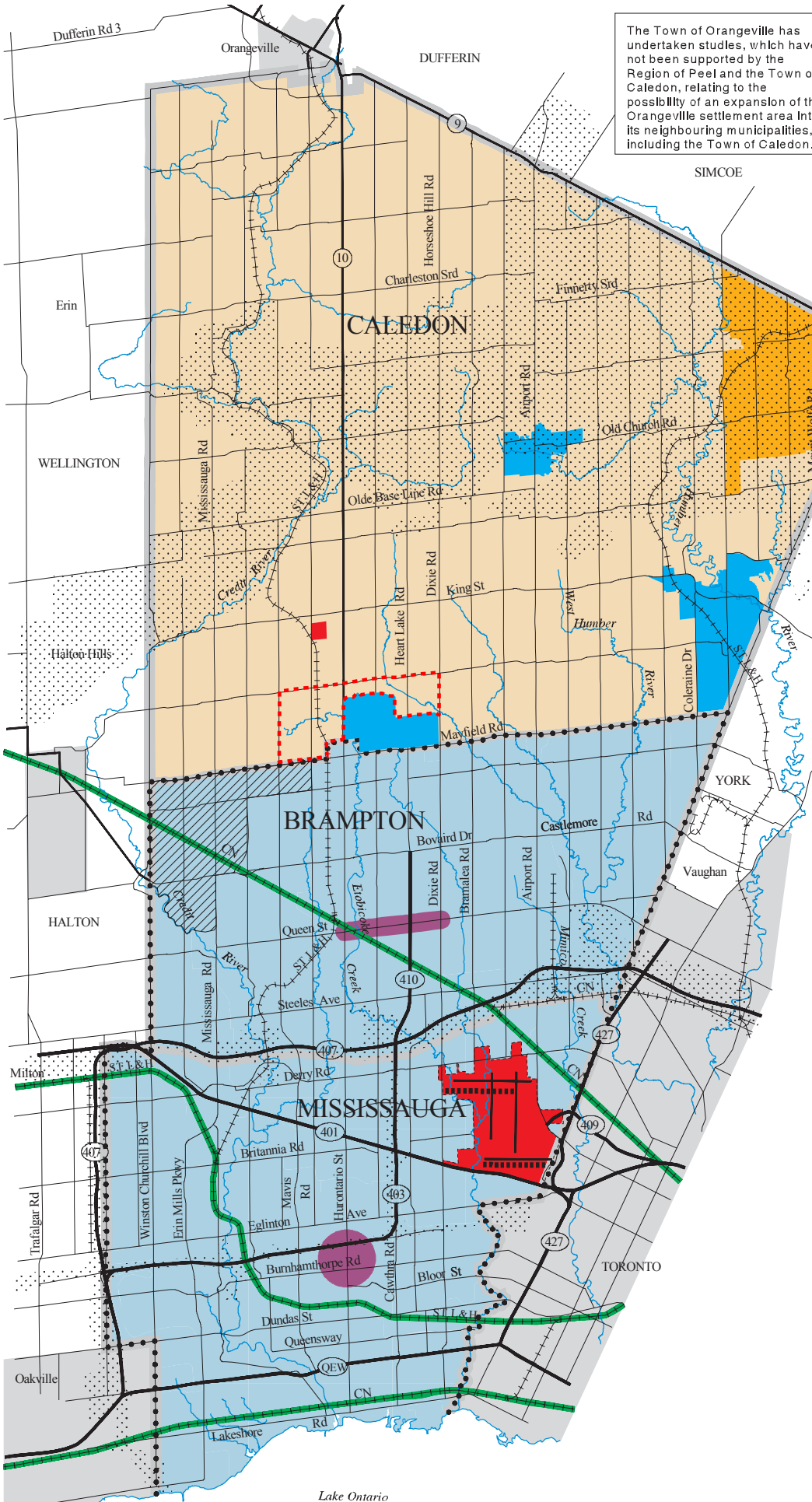
**OFFICIAL PLAN**

The Town of Orangeville has undertaken studies, which have not been supported by the Region of Peel and the Town of Caledon, relating to the possibility of an expansion of the Orangeville settlement area into its neighbouring municipalities, including the Town of Caledon.

This Schedule forms part of the Regional Municipality of Peel Official Plan and should be read in conjunction with the Plan's written text and with the area municipal official plans.

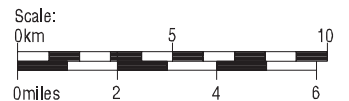
Information outside of Peel Region is shown on this Schedule for illustrative purposes to display inter-regional linkages.

Any lands within the Greenbelt Plan Area are not part of the urban area and are subject to the policies of the Greenbelt Plan.



**Legend:**

- Urban System
- Rural System
- Rural Service Centre
- Estate Residential Community
- Urban Area Outside Region of Peel
- Airport
- Study Area Boundary (Refer to Policy 5.4.3.2.4)
- Regional Urban Node
- Area with Special Policies (Refer to Figure 2)
- Northwest Brampton Urban Development Area (see section 5.3.4)
- Inter-Regional Rail Line
- 2031 Regional Urban Boundary

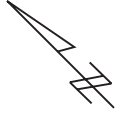


**REGIONAL STRUCTURE**

SCHEDULE



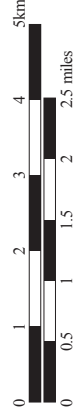




This Schedule forms part of the Regional Municipality of Peel Official Plan and should be read in conjunction with the Plan's written text and with the Town of Caledon Official Plan.

**Legend:**

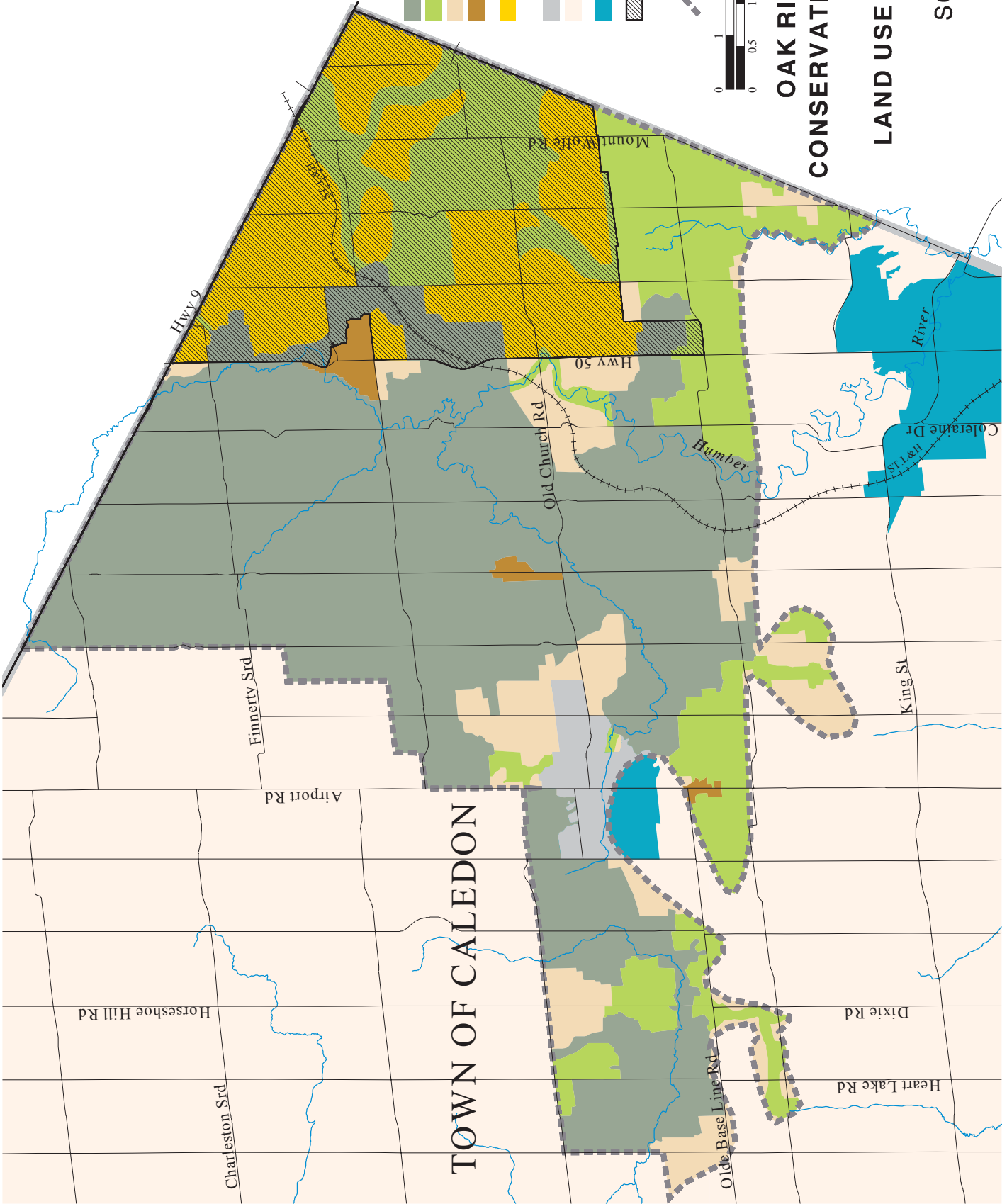
- Natural Core Area
- Natural Linkage Area
- Countryside Area
- Rural Settlement (component of Countryside Area)
- Palgrave Estates Residential Community (component of Countryside Area)
- Settlement Area
- Rural System outside ORMCPA
- Rural Service Centre outside ORMCPA
- Palgrave Estate Residential Community (refer to the Town of Caledon Official Plan)
- External boundary of ORMCPA



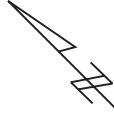
**OAK RIDGES MORaine  
CONSERVATION PLAN AREA  
(ORMCPA)  
LAND USE DESIGNATIONS**

**SCHEDULE D1**

June 2007

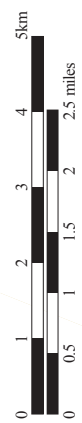


**TOWN OF CALEDON**



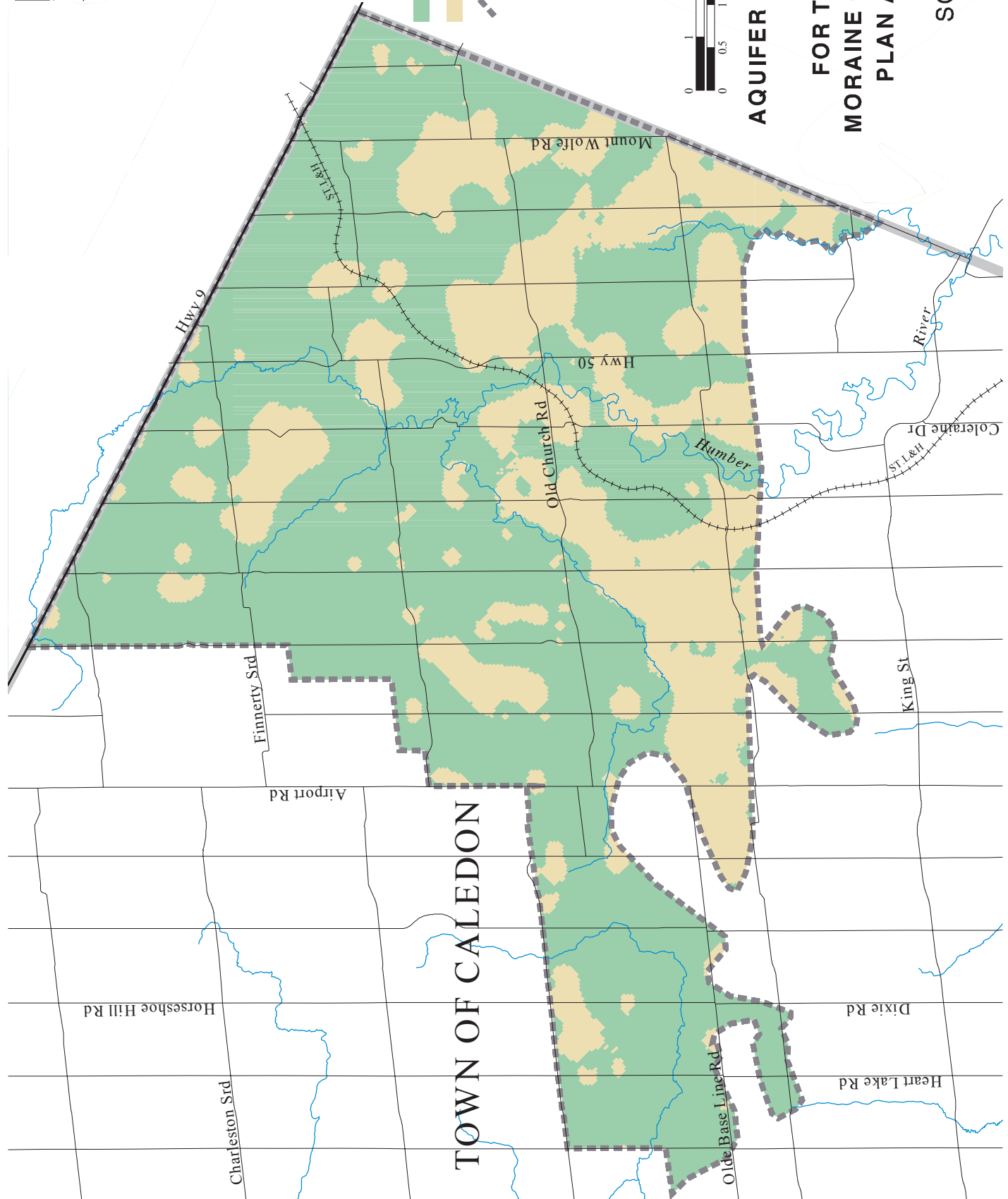
This Schedule forms part of the Regional Municipality of Peel Official Plan and should be read in conjunction with the Plan's written text and with the Town of Caledon Official Plan.

- Legend:**
- High Aquifer Vulnerability
  - Low Aquifer Vulnerability
  - Boundary of ORMCPA



**AQUIFER VULNERABILITY  
AREAS IN PEEL  
FOR THE OAK RIDGES  
MORaine CONSERVATION  
PLAN AREA (ORMCPA)**

**SCHEDULE**  
**D2**  
June 2007



**OFFICIAL PLAN**

This Schedule forms part of the Regional Municipality of Peel Official Plan and should be read in conjunction with the Plan's written text and with the area municipal official plans.

Information outside of Peel Region is shown on this Schedule for illustrative purposes to display inter-regional linkages.

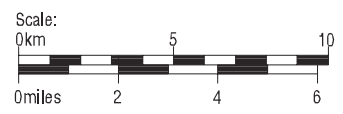
East-West connections to Highway 427 will be determined through future studies and Official Plan Amendment.

North-South Corridor/Bramwest Parkway Study Area - Precise major roads in these areas will be determined through future studies and Official Plan Amendments.

ROPA 16 Before OMB

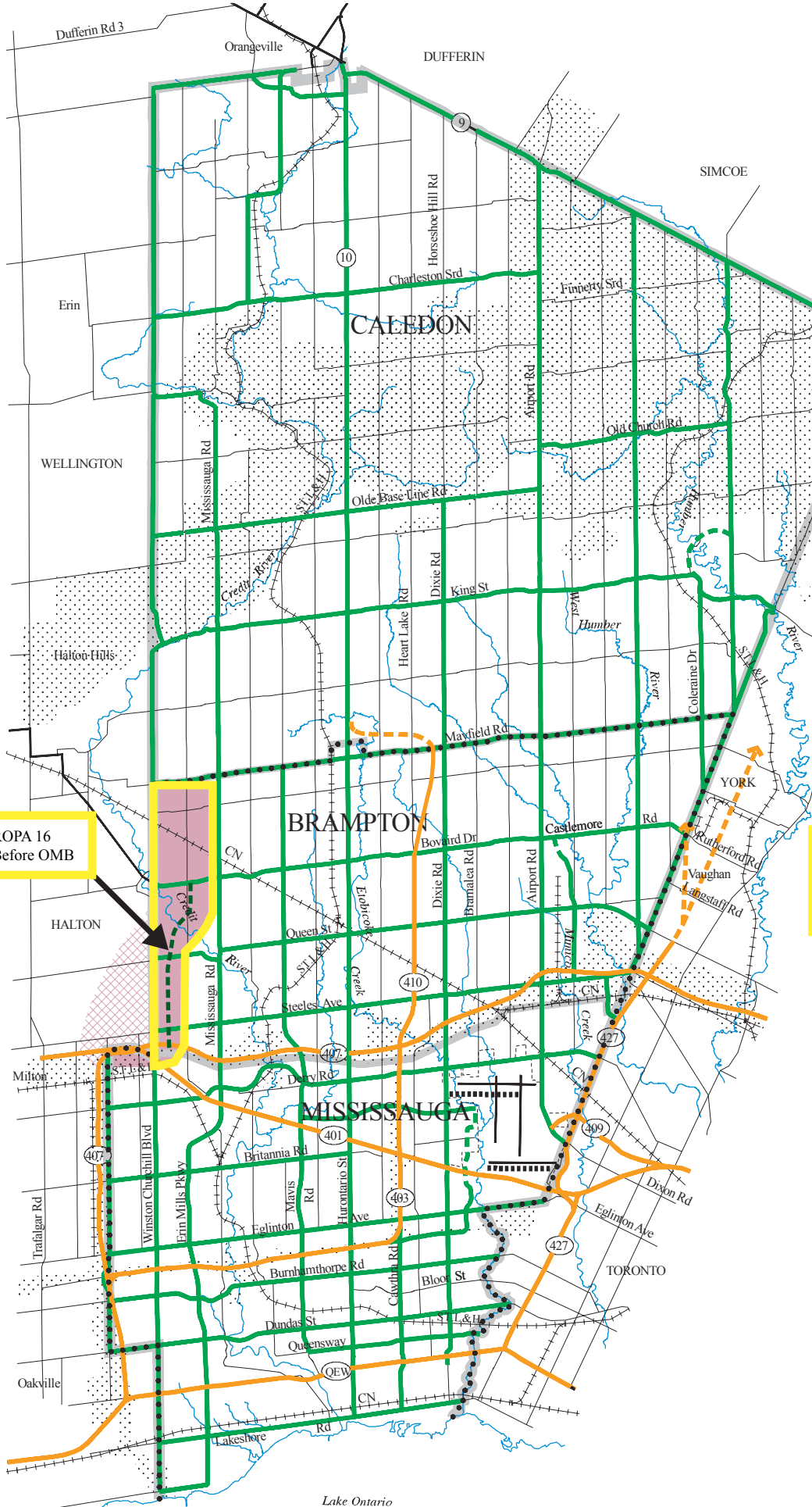
ROPA 16 Before OMB

- Legend:**
- Freeway
  - Freeway Extension
  - Major Road
  - Future Major Road
  - Conceptual Corridor
  - Conceptual North-South Corridor/Bramwest Parkway Study Area
  - Conceptual North-South Corridor Study Area shown in Halton Region does not form part of this Plan
  - Area with Special Policies (Refer to Figure 2)
  - 2031 Regional Urban Boundary



**MAJOR ROAD NETWORK**

Major roads of all jurisdictions are shown. Major roads under the jurisdiction of the Region of Peel are shown on Schedule F.





# OFFICIAL PLAN

This Schedule forms part of the Regional Municipality of Peel Official Plan and should be read in conjunction with the Plan's written text and with the area municipal official plans.

Information outside of Peel Region is shown on this Schedule for illustrative purposes to display inter-regional linkages.

The general extent of the Rights-of-Way are shown on this Schedule. For a precise interpretation see detailed maps available at the Regional Public Works Department.

Rights-of-Way for other Major Roads, as shown on Schedule E, are identified in Area Municipal Official Plans.

R-O-W requirement for Queen Street West between Mississauga Road and Chinguacousy Road. (ROPA 16) Before OMB

R-O-W requirement for Winston Churchill Blvd. between Steeles Ave. and Highway 401. ROPA 16 Before OMB

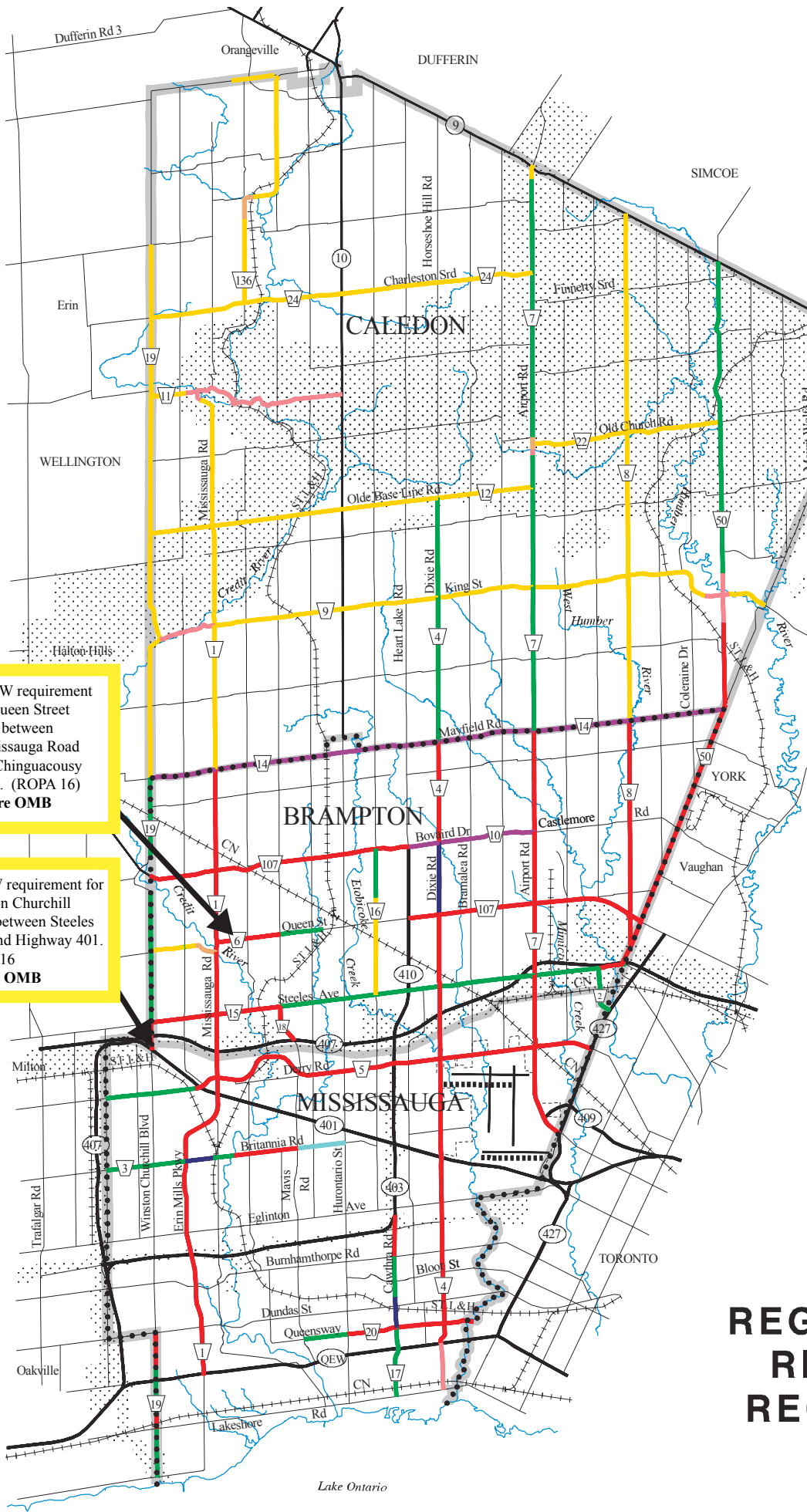
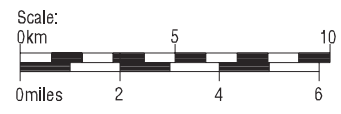
ROPA 16 Before OMB

**Legend:**

Metres	Feet
20	66
26	86
30	100
36	120
40	130
43.5	145
45	150
50	165

Protect wider rights-of-way, where necessary, at intersections.

- Area with Special Policies (Refer to Figure 2)
- 2031 Regional Urban Boundary



# REGIONAL ROAD RIGHT-OF-WAY REQUIREMENTS

# OFFICIAL PLAN

This Schedule forms part of the Regional Municipality of Peel Official Plan and should be read in conjunction with the Plan's written text and with the area municipal official plans.

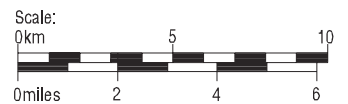
Information outside of Peel Region is shown on this Schedule for illustrative purposes to display inter-regional linkages.

NOTE: Bolton GO Station - Precise station location will be determined through future study and Official Plan Amendment.

Major Transit Corridors are shown as identified by transit providers.

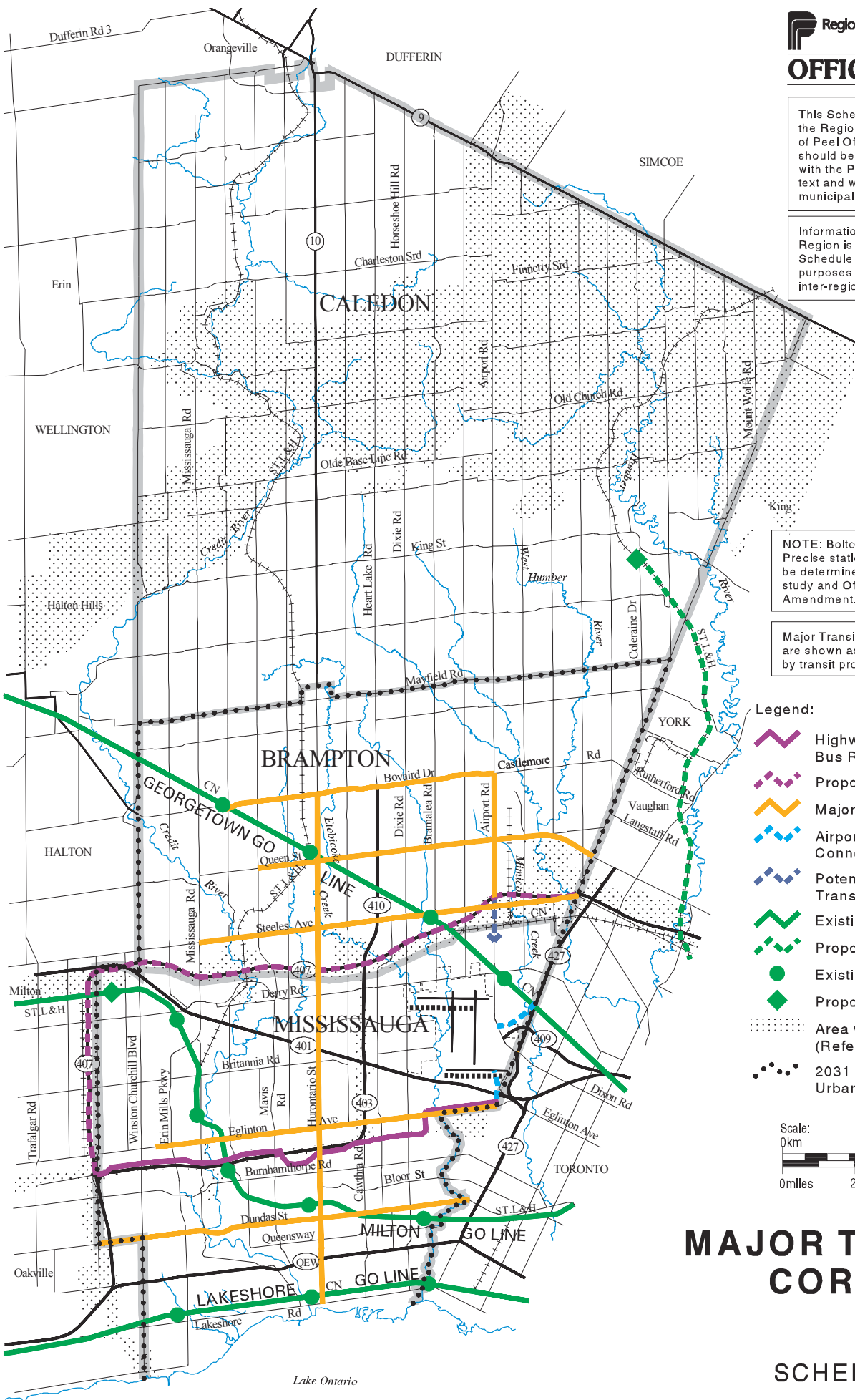
**Legend:**

-  Highway 403-Eglinton Ave. Bus Rapid Transit
-  Proposed 407 Transitway
-  Major Transit Corridor
-  Airport Transit Connection
-  Potential Airport Transit Connection
-  Existing GO Rail Line
-  Proposed GO Rail Line
-  Existing GO Rail Station
-  Proposed GO Rail Station
-  Area with Special Policies (Refer to Figure 2)
-  2031 Regional Urban Boundary



# MAJOR TRANSIT CORRIDORS

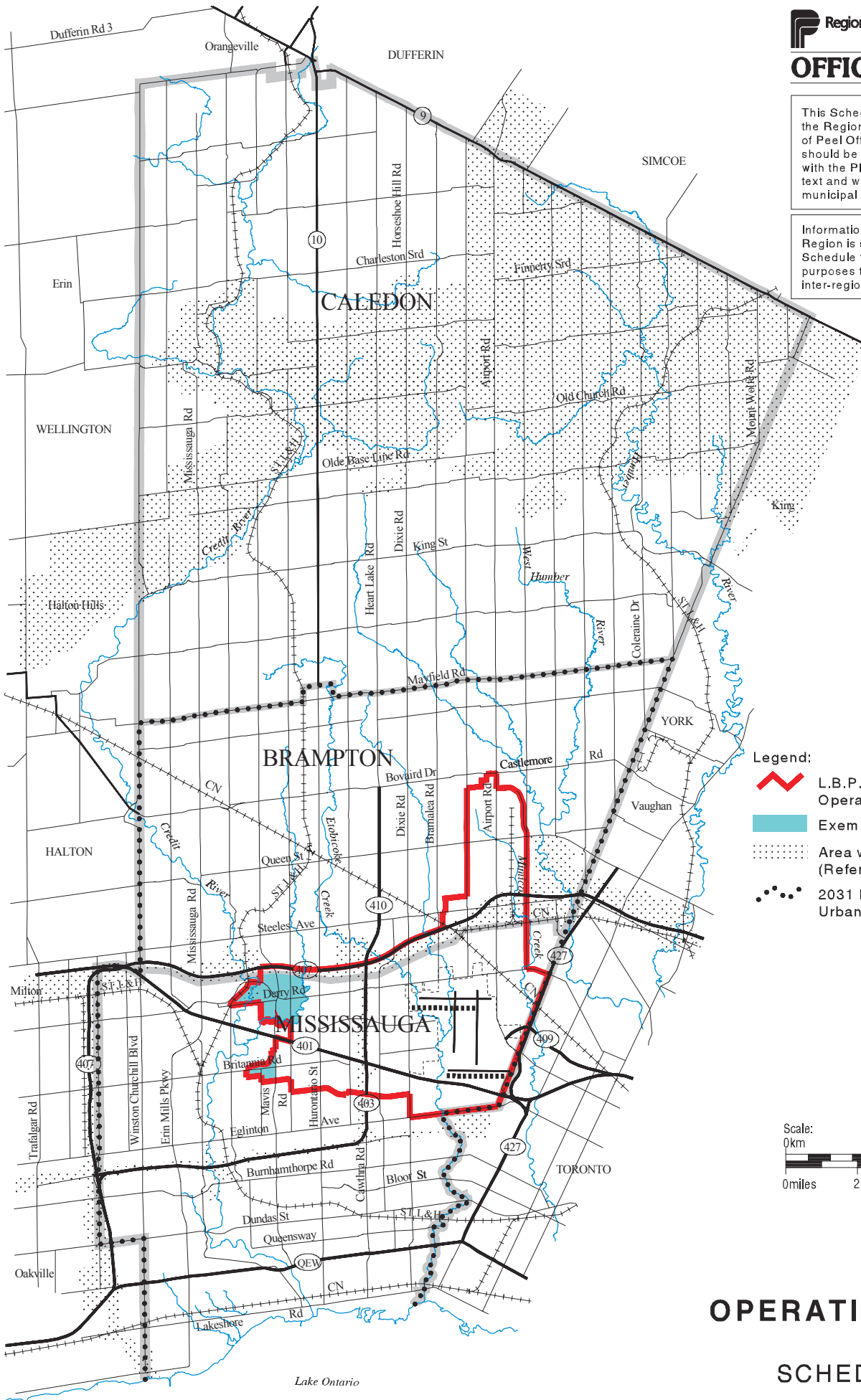
SCHEDULE







**OFFICIAL PLAN**

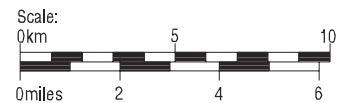
This Schedule forms part of the Regional Municipality of Peel Official Plan and should be read in conjunction with the Plan's written text and with the area municipal official plans.

Information outside of Peel Region is shown on this Schedule for illustrative purposes to display inter-regional linkages.



**Legend:**

-  L.B.P.I.A. Operating Area Boundary
-  Exempt Area
-  Area with Special Policies (Refer to Figure 2)
-  2031 Regional Urban Boundary



**L.B.P.I.A. OPERATING AREA**

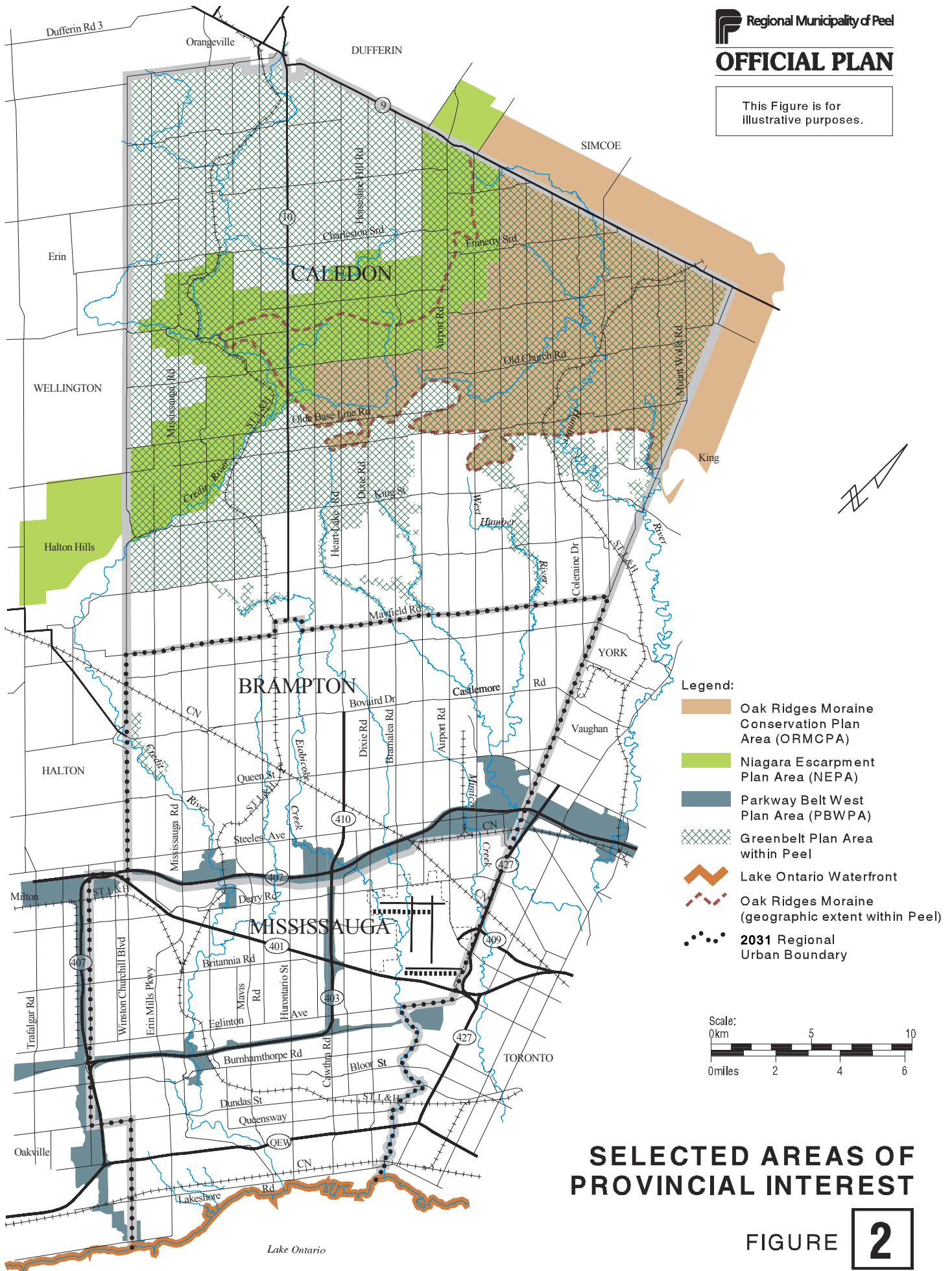
SCHEDULE



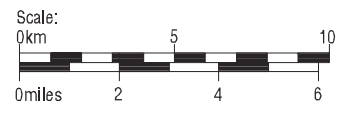




This Figure is for illustrative purposes.



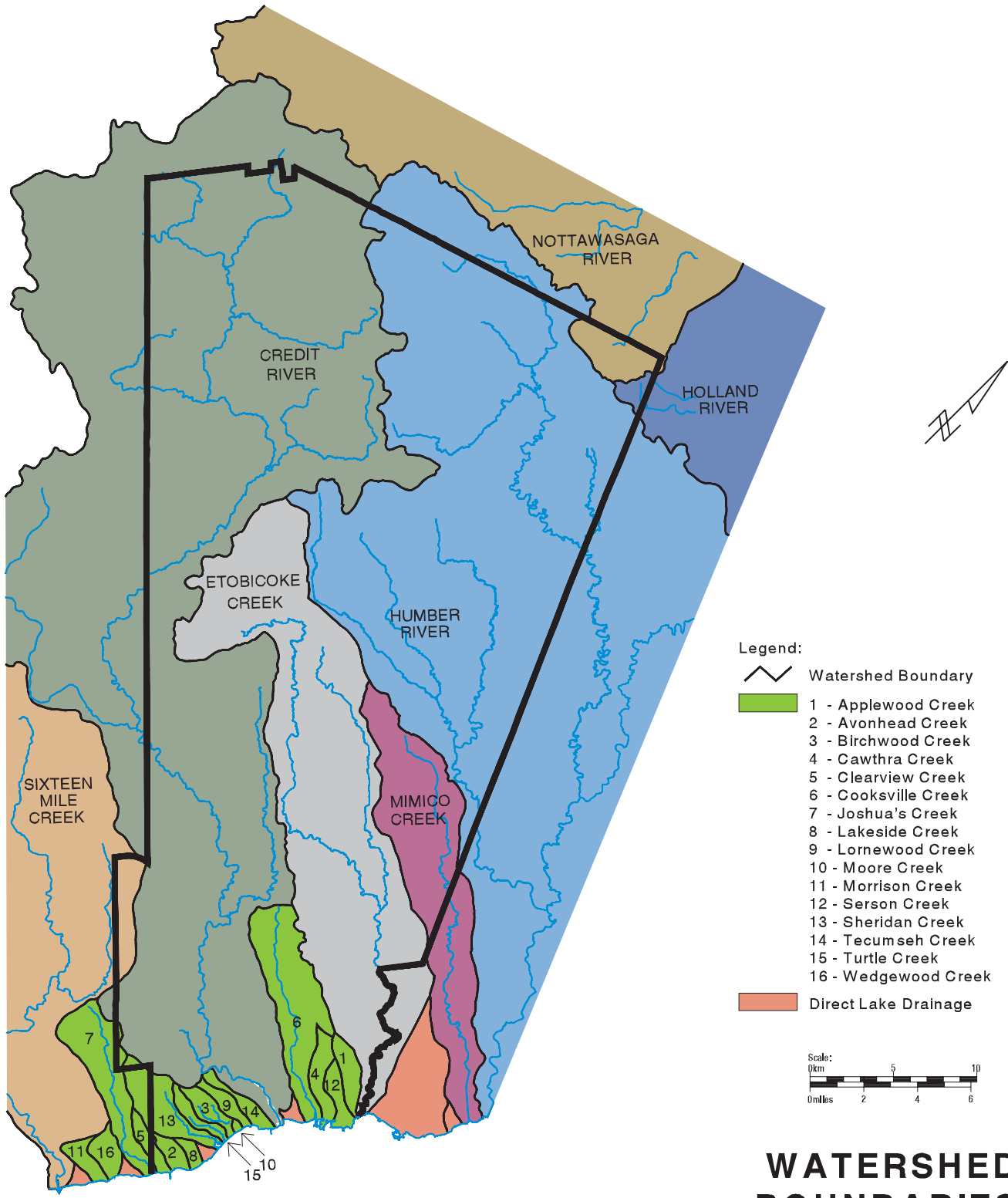
- Legend:**
- Oak Ridges Moraine Conservation Plan Area (ORMCPA)
  - Niagara Escarpment Plan Area (NEPA)
  - Parkway Belt West Plan Area (PBWPA)
  - Greenbelt Plan Area within Peel
  - Lake Ontario Waterfront
  - Oak Ridges Moraine (geographic extent within Peel)
  - 2031 Regional Urban Boundary



**SELECTED AREAS OF PROVINCIAL INTEREST**

FIGURE 2

This Figure is for illustrative purposes.



**WATERSHED BOUNDARIES**

FIGURE **3**  
May 2000



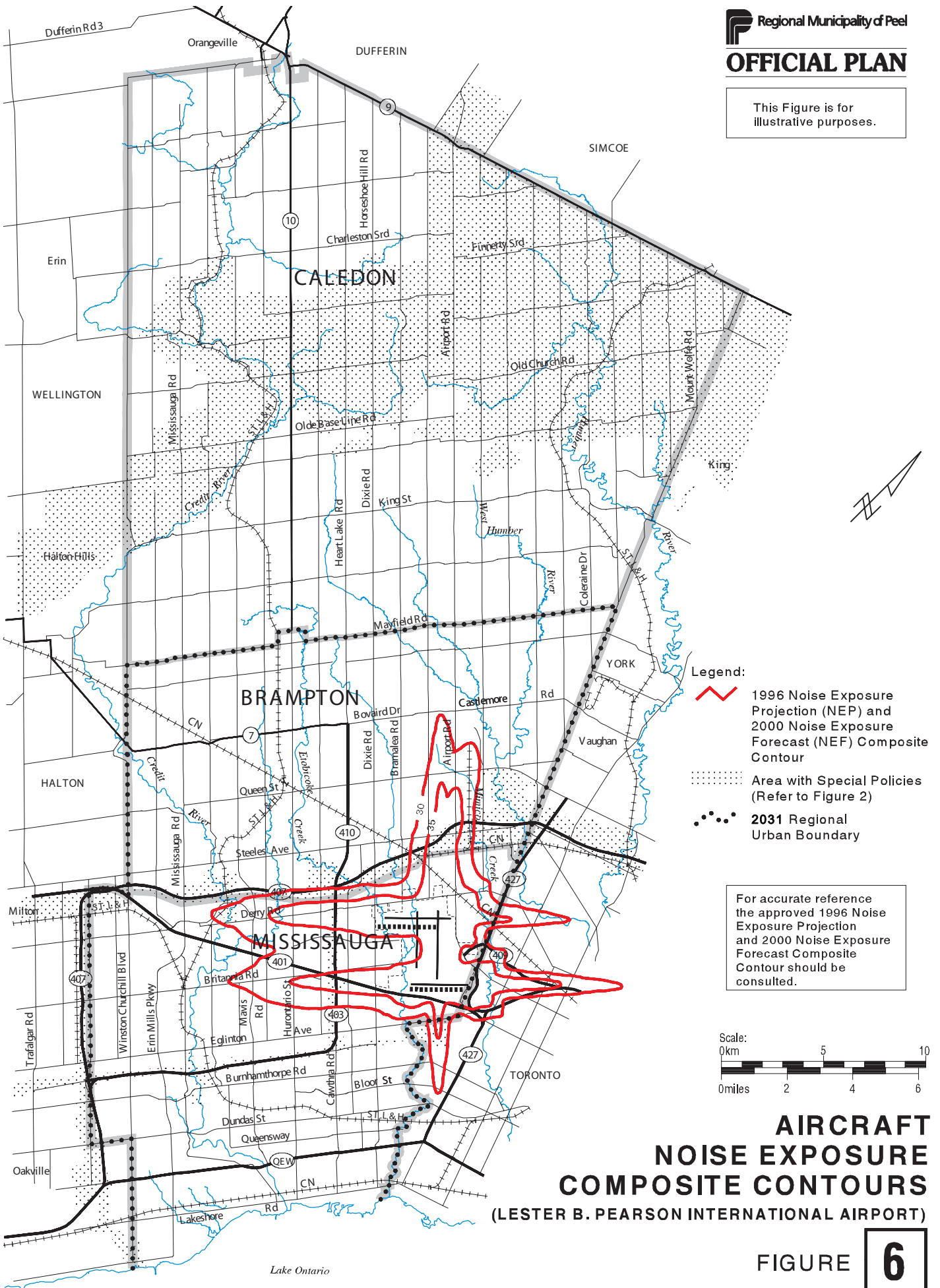
This figure is for information purposes only. Changes may be made periodically to this figure without requiring an amendment to this plan.

<b>Year</b>	<b>Measure</b>	<b>Brampton</b>	<b>Caledon</b>	<b>Mississauga</b>	<b>PEEL Total</b>
<b>1971</b>	<b>Population</b>	70,838	16,994	172,042	<b>259,874</b>
	<b>Employment</b>	32,000	3,000	70,000	<b>105,000</b>
	<b>Activity Rate</b>	45.20%	17.70%	40.70%	<b>40.40%</b>
<b>1981</b>	<b>Population</b>	149,030	26,645	315,056	<b>490,731</b>
	<b>Employment</b>	58,555	6,405	164,935	<b>229,895</b>
	<b>Activity Rate</b>	39.30%	24.00%	52.40%	<b>46.80%</b>
<b>1991</b>	<b>Population</b>	234,445	34,965	463,338	<b>732,798</b>
	<b>Employment</b>	92,470	11,485	276,400	<b>380,355</b>
	<b>Activity Rate</b>	39.44%	32.85%	59.65%	<b>51.90%</b>
<b>2001</b>	<b>Population</b>	325,000	51,000	613,000	<b>989,000</b>
	<b>Employment</b>	139,000	19,000	380,000	<b>538,000</b>
	<b>Activity Rate</b>	42.77%	37.25%	61.99%	<b>54.40%</b>
<b>2011</b>	<b>Population</b>	469,000	67,000	681,000	<b>1,217,000</b>
	<b>Employment</b>	205,000	26,000	439,000	<b>670,000</b>
	<b>Activity Rate</b>	43.71%	38.81%	64.46%	<b>55.05%</b>
<b>2021</b>	<b>Population</b>	588,000	84,000	716,000	<b>1,388,000</b>
	<b>Employment</b>	256,000	33,000	473,000	<b>762,000</b>
	<b>Activity Rate</b>	43.54%	39.29%	66.06%	<b>54.90%</b>

## POPULATION AND EMPLOYMENT GROWTH IN PEEL REGION

FIGURE 4

This Figure is for illustrative purposes.



# AIRCRAFT NOISE EXPOSURE COMPOSITE CONTOURS

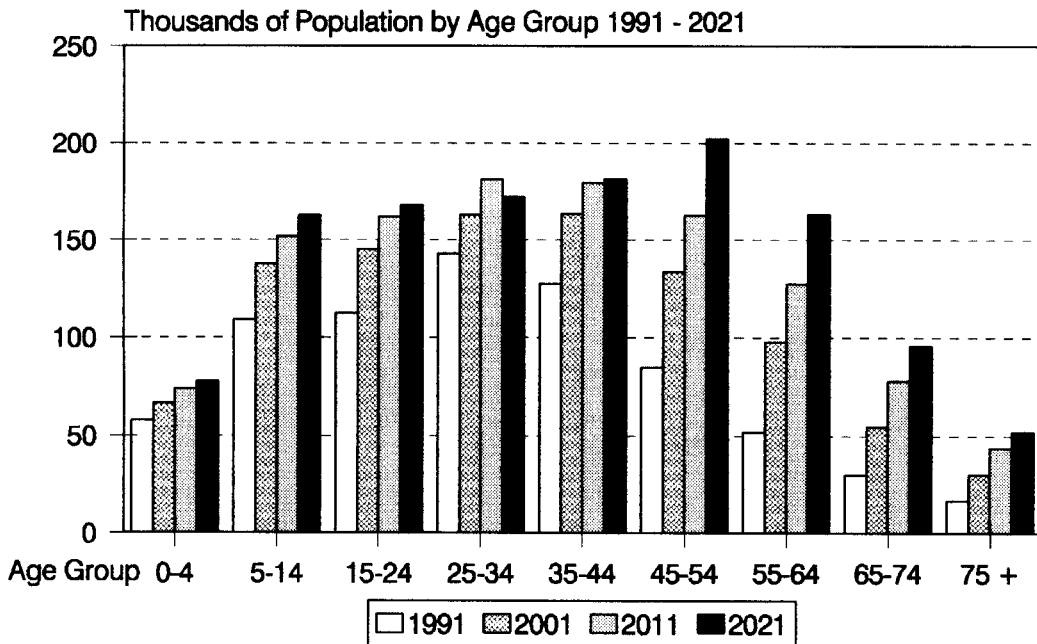
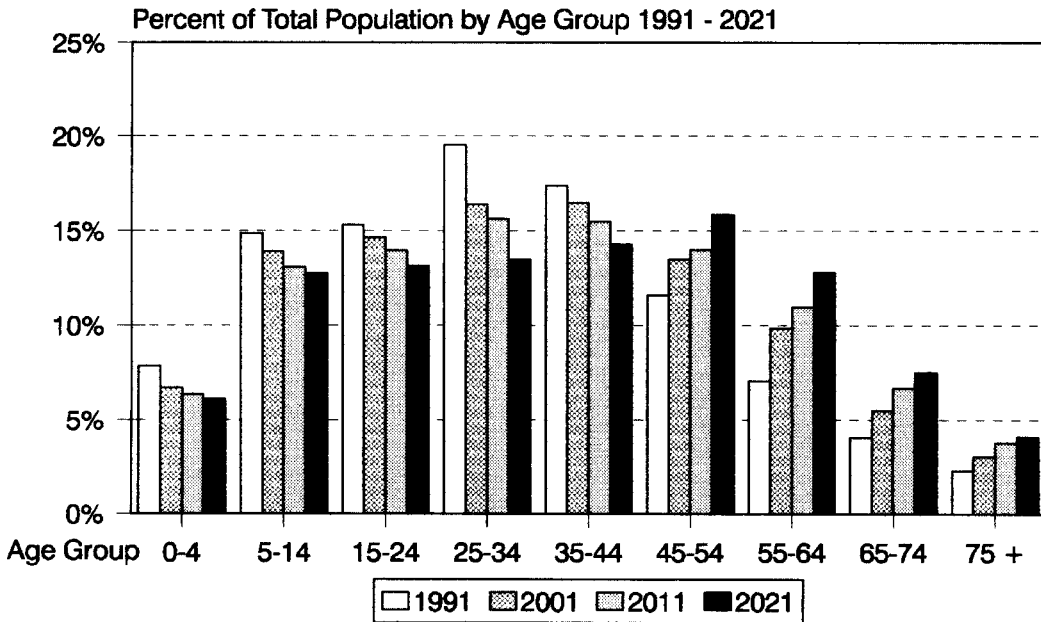
(LESTER B. PEARSON INTERNATIONAL AIRPORT)

FIGURE

**6**

November 2008

This figure is for information purposes only. Changes may be made periodically to this figure without requiring an amendment to this Plan.



**POPULATION  
BY AGE  
STRUCTURE**

FIGURE

**7**



Non-institutional Population by Home Language	Province of Ontario	Percentage of Ontario	Peel Region	Percentage of Peel
<b>Total Population</b>	10,084,885	100.00%	732,798	100.00%
<b>Institutional Population</b>	107,835	1.07%	3,148	0.43%
<b>Non-Institutional Population</b>	9,977,050	98.93%	729,650	99.57%
<b>1. Single responses</b>	9,764,700	96.83%	705,205	96.23%
<b>a. Official Languages</b>	8,697,080	86.24%	593,045	80.93%
English	8,397,000	83.26%	589,310	80.42%
French	300,080	2.98%	3,735	0.51%
<b>b. Non-official languages</b>	1,067,620	10.59%	112,160	15.31%
Punjabi	36,875	0.37%	15,475	2.11%
Portuguese	98,735	0.98%	14,270	1.95%
Chinese	187,680	1.86%	13,435	1.83%
Italian	152,830	1.52%	11,290	1.54%
Polish	68,870	0.68%	9,930	1.36%
Other languages	107,415	1.07%	8,020	1.09%
Spanish	61,715	0.61%	6,195	0.85%
Tagalog (Pilipino)	24,730	0.25%	4,685	0.64%
Croatian	16,205	0.16%	3,850	0.53%
Arabic	28,725	0.28%	3,680	0.50%
Vietnamese	29,355	0.29%	3,555	0.49%
Urdu	11,075	0.11%	2,625	0.36%
Greek	39,695	0.39%	2,275	0.31%
Gujarati	14,565	0.14%	1,860	0.25%
Korean	16,625	0.16%	1,860	0.25%
Tamil	18,615	0.18%	1,645	0.22%
Ukrainian	19,185	0.19%	1,590	0.22%
German	40,960	0.41%	1,490	0.20%
Hindi	7,425	0.07%	1,380	0.19%
Hungarian	16,040	0.16%	750	0.10%
Persian (Farsi)	19,110	0.19%	605	0.08%
Japanese	5,285	0.05%	590	0.08%
Dutch	7,695	0.08%	400	0.05%
Armenian	7,730	0.08%	240	0.03%
Romanian	6,270	0.06%	190	0.03%
Creoles	1,185	0.01%	125	0.02%
Russian	9,045	0.09%	75	0.01%
Khmer (Cambodian)	3,940	0.04%	65	0.01%
<b>2. Multiple Responses</b>	212,355	2.11%	24,445	3.34%

This figure is for information purposes only. Changes may be made periodically to this figure without requiring an amendment to this plan.

Source: 1991 Census of Canada

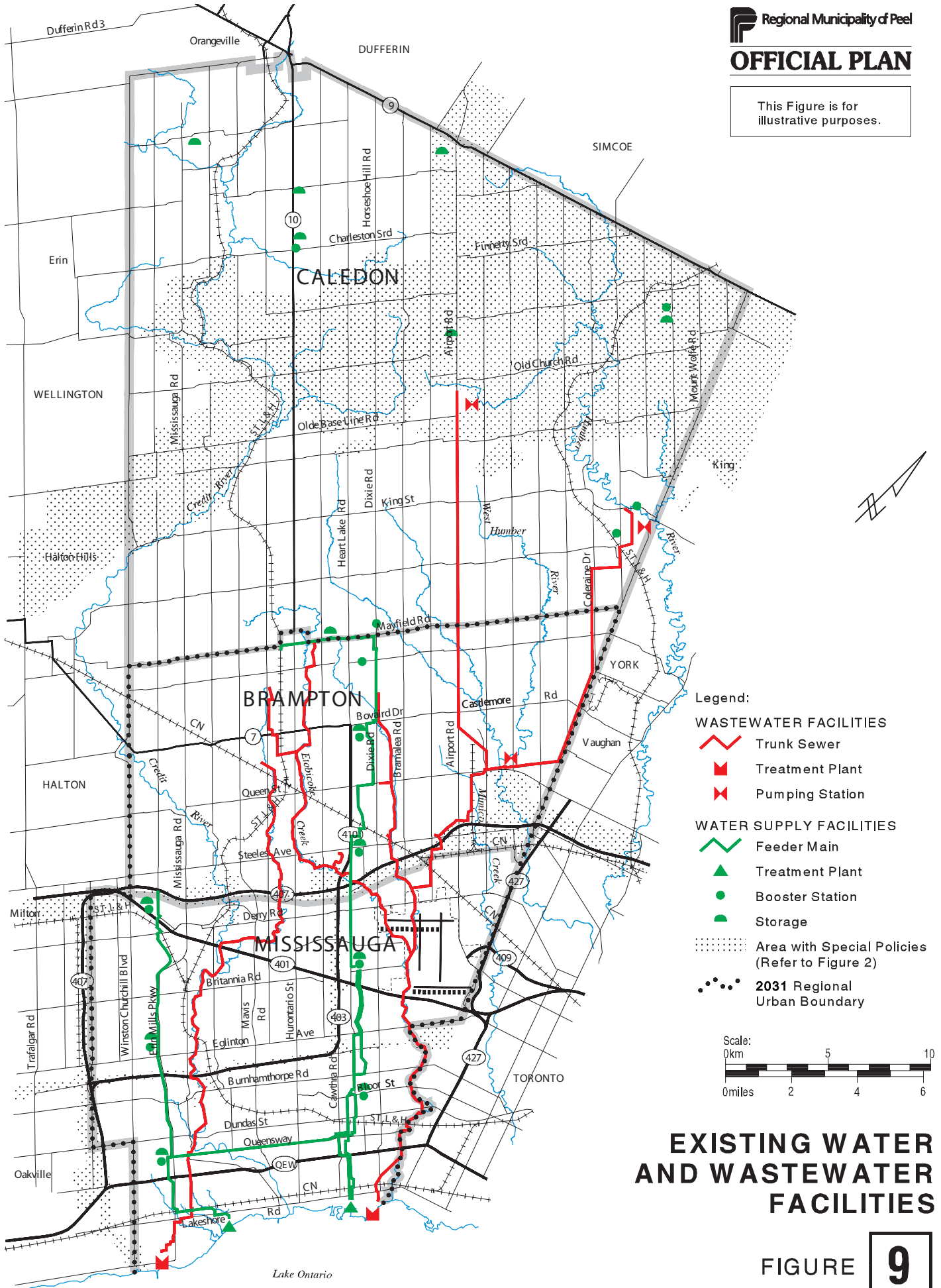
\* 1991 numbers have not been adjusted to reflect census undercount.

## HOME LANGUAGES: PEEL REGION AND ONTARIO

FIGURE **8**

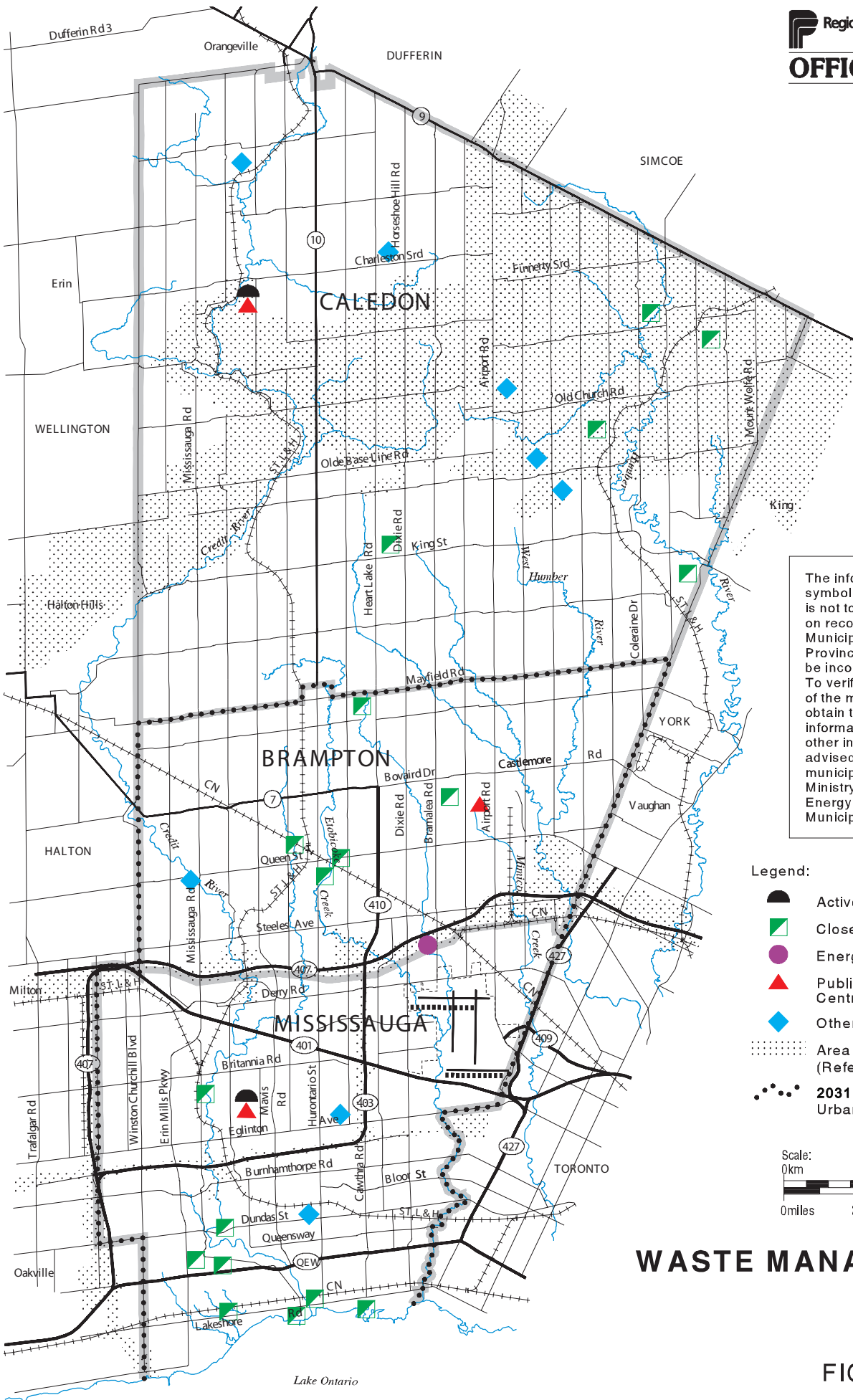
November 1997

This Figure is for illustrative purposes.



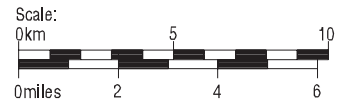
**EXISTING WATER AND WASTEWATER FACILITIES**

FIGURE **9**



The information, shown symbolically on this Figure, is not to scale and is based on records of the Regional Municipality of Peel and the Province of Ontario that may be incomplete or inaccurate. To verify the actual locations of the mapped sites or to obtain the most current information, landowners or other interested parties are advised to contact the area municipality, the Ontario Ministry of Environment and Energy and/or the Regional Municipality of Peel.

- Legend:**
- Active Public Landfill Site
  - Closed Public Landfill Site
  - Energy from Waste Facility
  - Public Waste Drop-off Centre
  - Other Closed Landfill Site
  - Area with Special Policies (Refer to Figure 2)
  - 2031 Regional Urban Boundary



# WASTE MANAGEMENT SITES




FIGURE **10**  
 November 2008

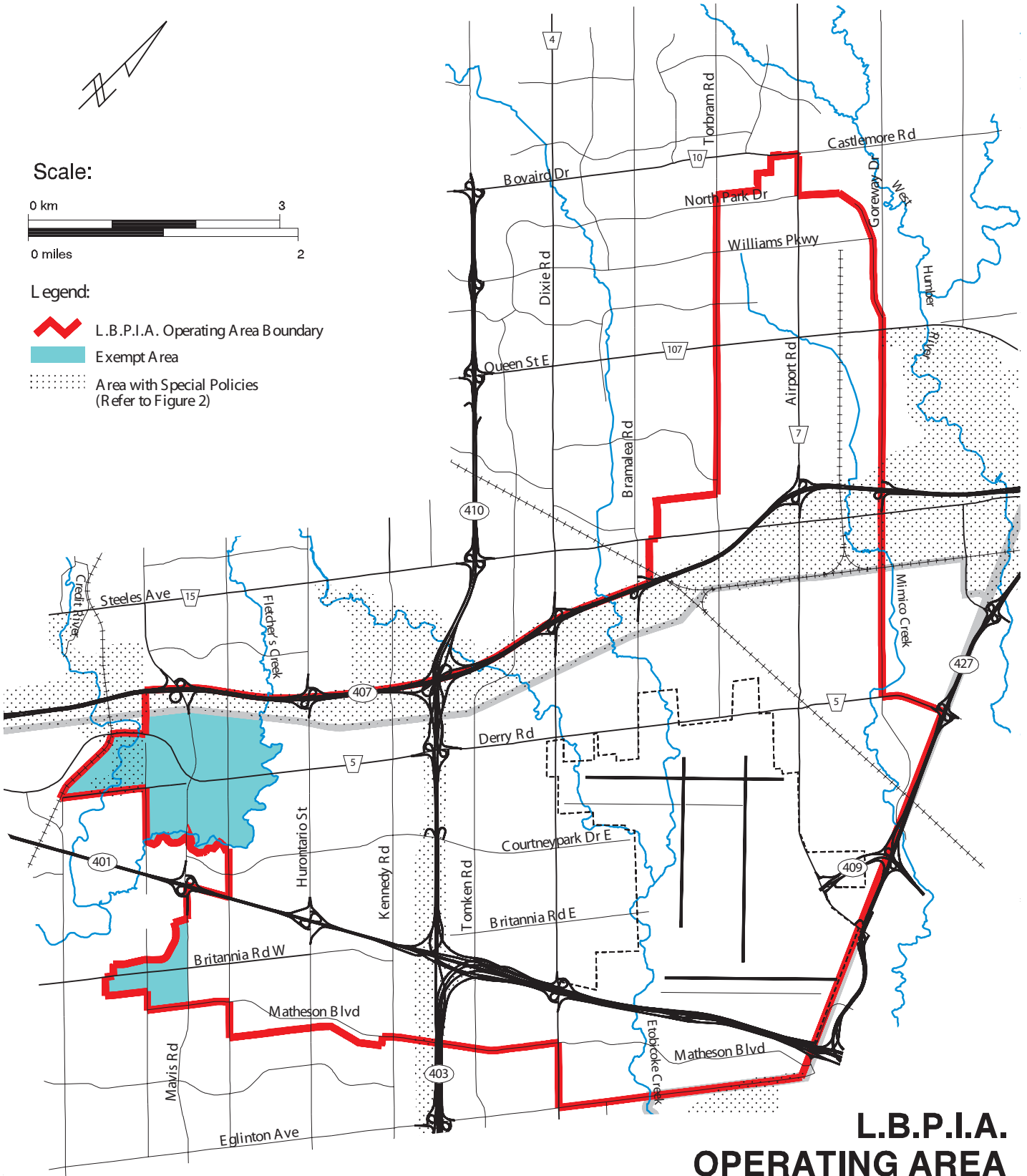


Scale:



Legend:

-  L.B.P.I.A. Operating Area Boundary
-  Exempt Area
-  Area with Special Policies (Refer to Figure 2)



**L.B.P.I.A.  
 OPERATING AREA**

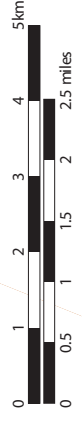
FIGURE **11**





This Figure is for information purposes. Changes may be made periodically to this Figure without requiring an amendment to this Plan.

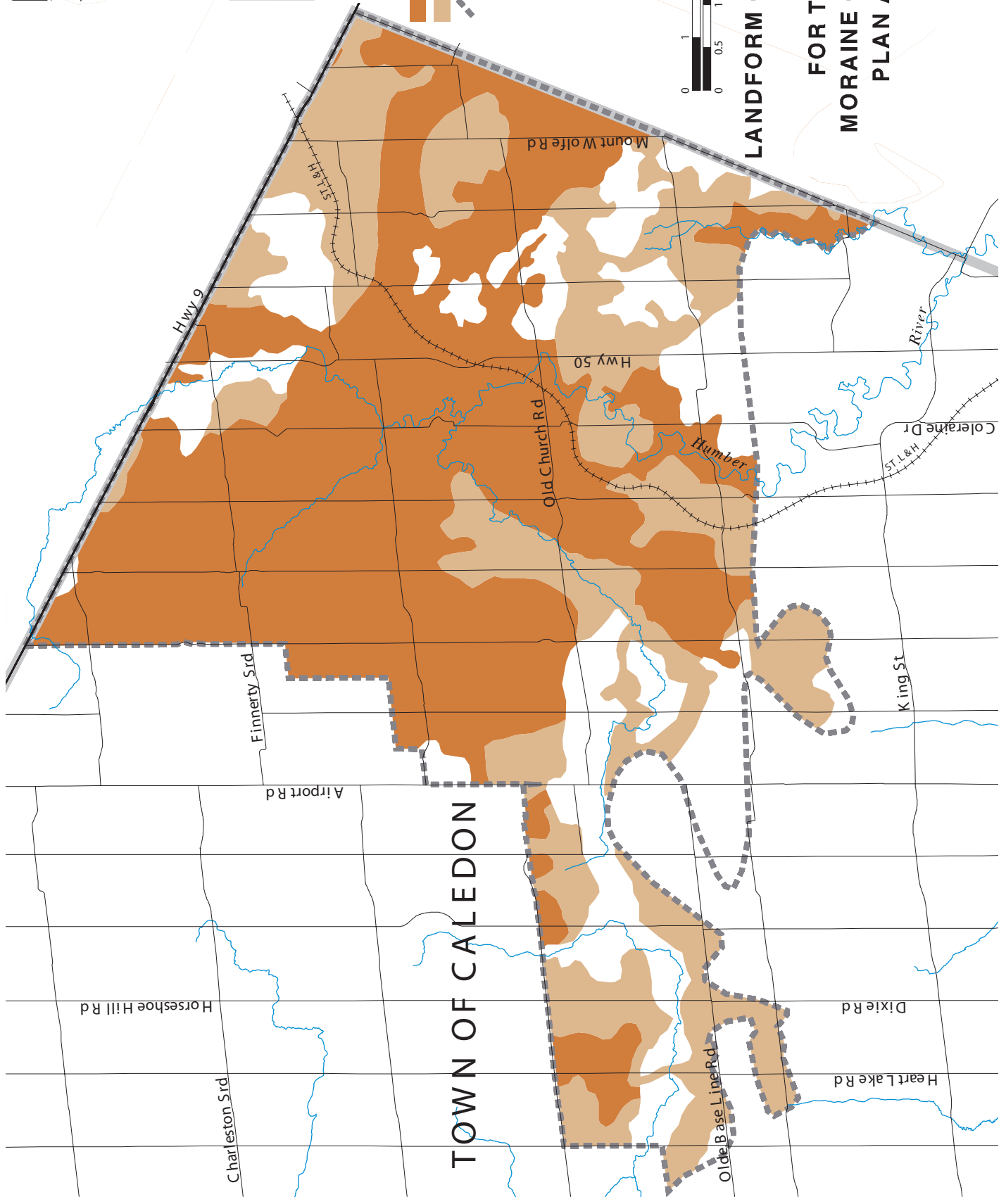
- Legend:
- Category 1
  - Category 2
  - Boundary of ORMCPA



# LANDFORM CONSERVATION AREAS IN PEEL FOR THE OAK RIDGES MORaine CONSERVATION PLAN AREA (ORMCPA)

FIGURE 12

March 2003

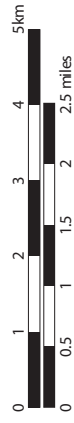




This Figure is for information purposes. Changes may be made periodically to this Figure without requiring an amendment to this Plan.

**Legend:**

- municipal well
- ↗ 2-year travel zone
- ↗ 10-year travel zone
- ↗ 25-year travel zone
- Boundary of ORMCPA

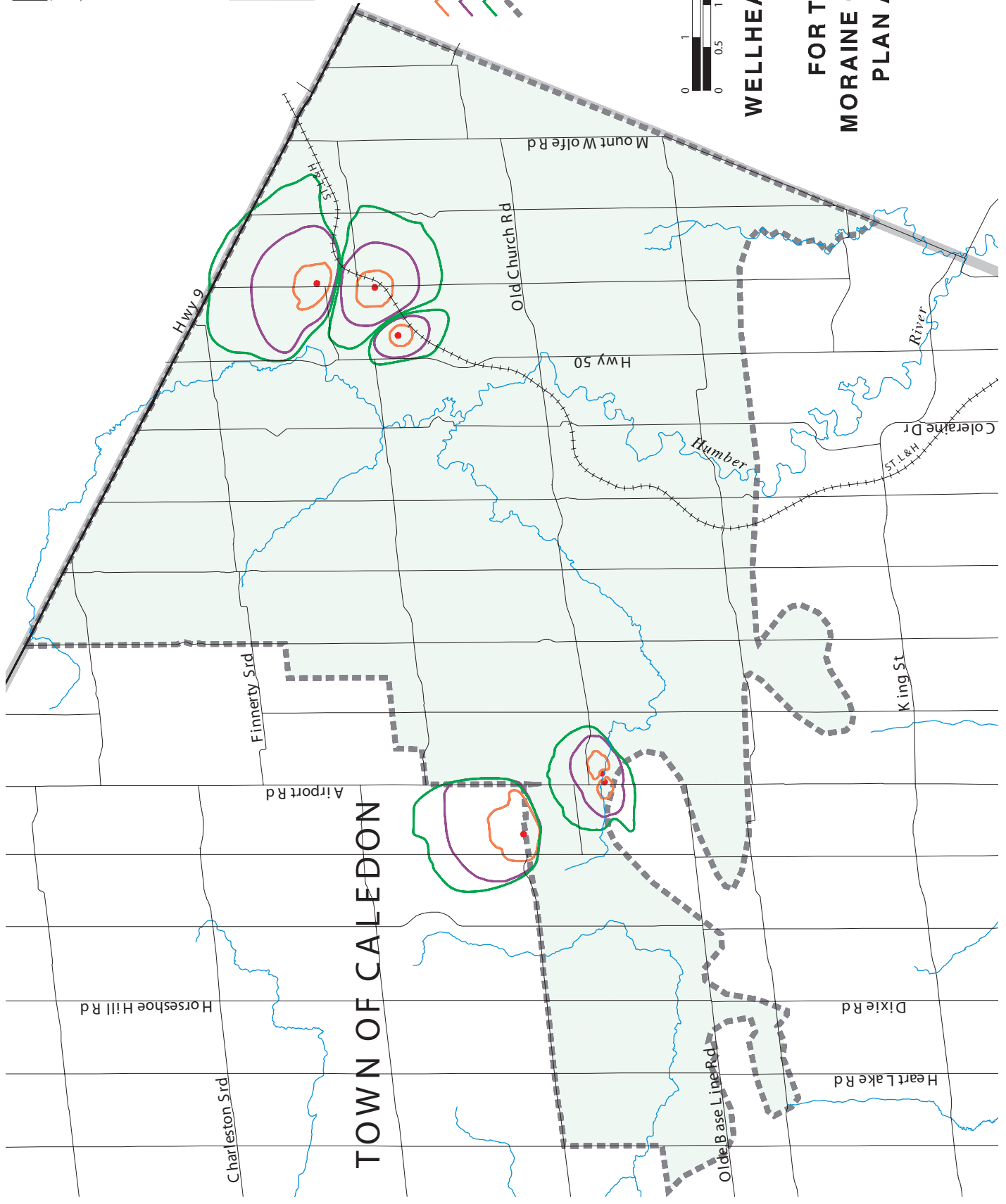


**WELLHEAD PROTECTION  
AREAS IN PEEL  
FOR THE OAK RIDGES  
MORaine CONSERVATION  
PLAN AREA (ORMCPA)**

**13**

**FIGURE**

March 2003

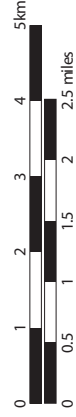


**TOWN OF CALEDON**

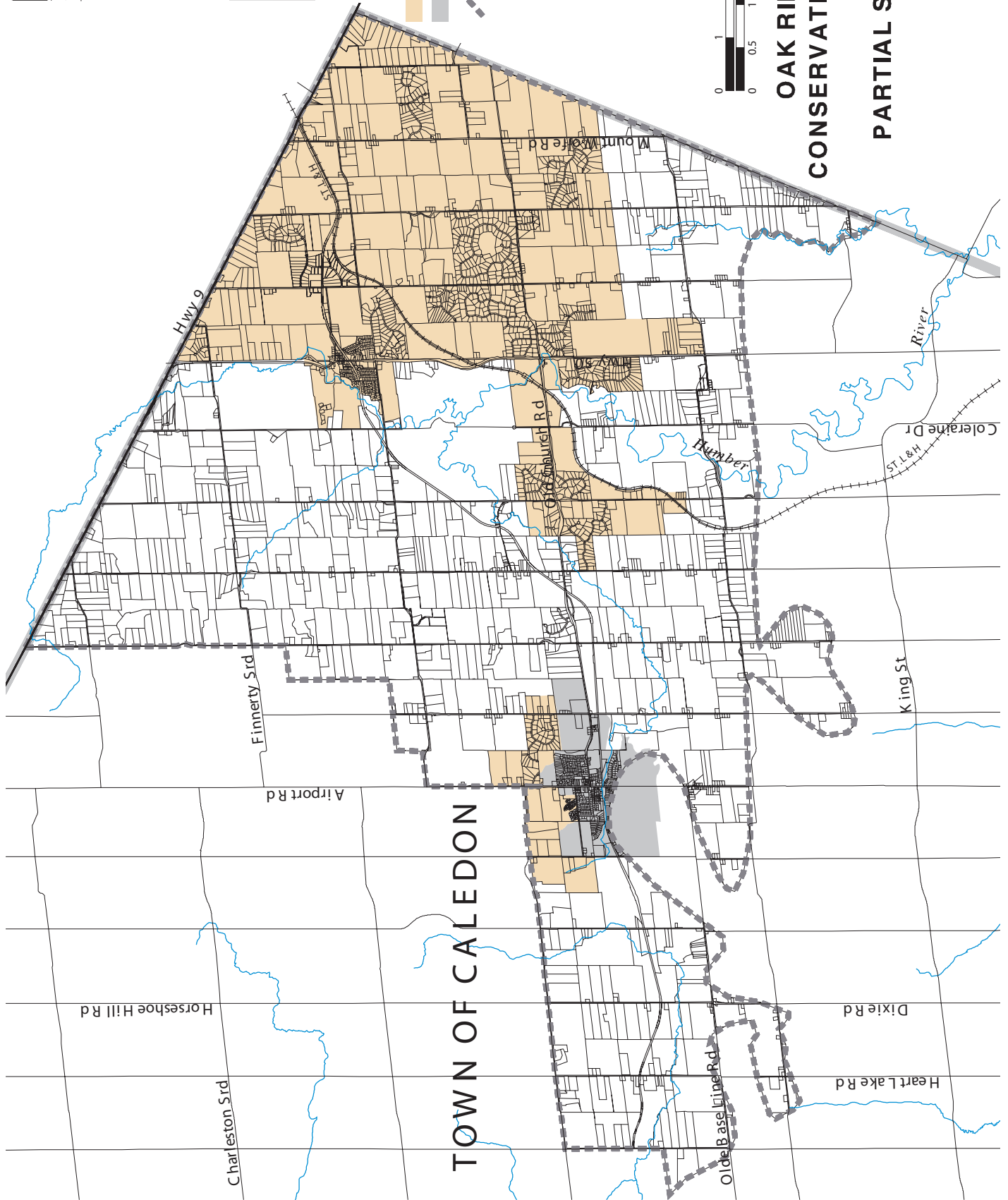


This Figure is for information purposes. Changes may be made periodically to this Figure without requiring an amendment to this Plan.

- Legend:**
- Partial Service Area
  - Caledon East Settlement Area
  - External boundary of ORMCPA



**OAK RIDGES MORaine  
 CONSERVATION PLAN AREA  
 (ORMCPA)  
 PARTIAL SERVICE AREAS**



**TOWN OF CALEDON**

**FIGURE 14**

July 2004