

McVean Sewage Pumping Station Environmental Assessment Project

Schedule 'B' Class Environmental Assessment

Public Consultation

Thursday, July 29, 2021



McVean Sewage Pumping Station Environmental Assessment

Why is the McVean Sewage Pumping Station EA Project taking place?

The objective of the McVean Sewage Pumping Station (SPS) EA project is to determine the best solution that fully addresses the problems identified in the 2015 condition assessment of the facility:

1. The station does not have enough emergency storage to meet future demands.
2. Peel Region has experienced operation and maintenance challenges due to grit and Fat, Oil and Grease (FOG) buildup.

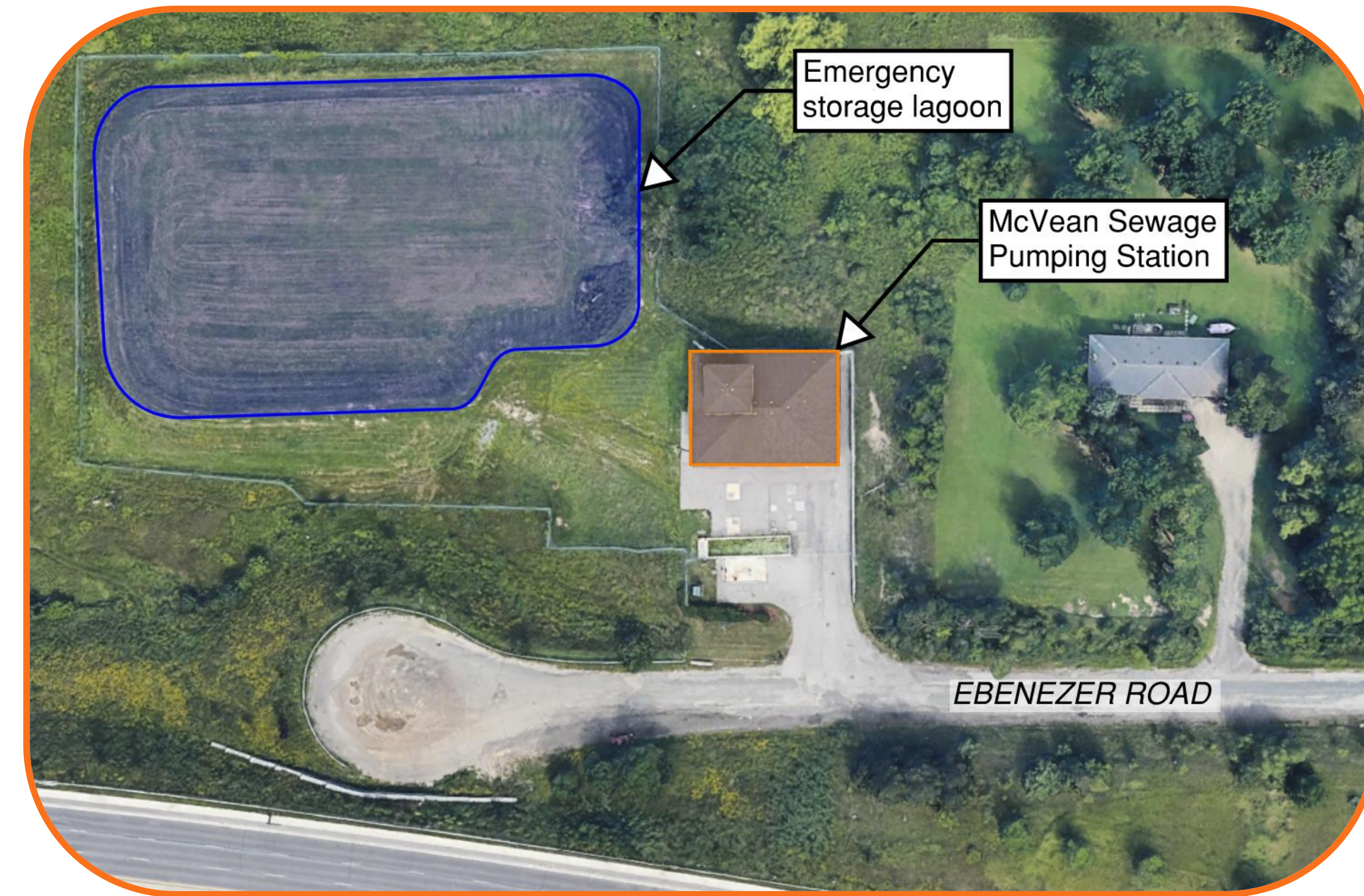
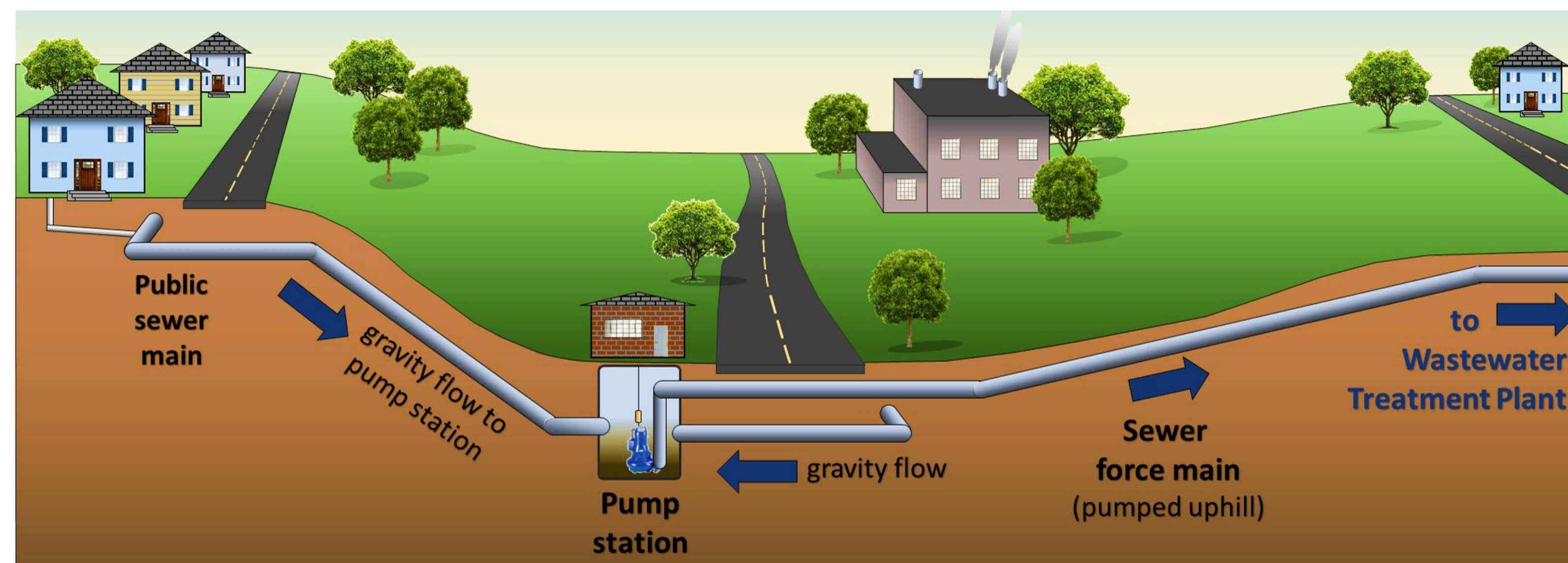
Purpose of Public Consultation

The purpose of this public consultation is to tell you about:

- The problem solving process being followed
- The 2 alternative solutions being evaluated

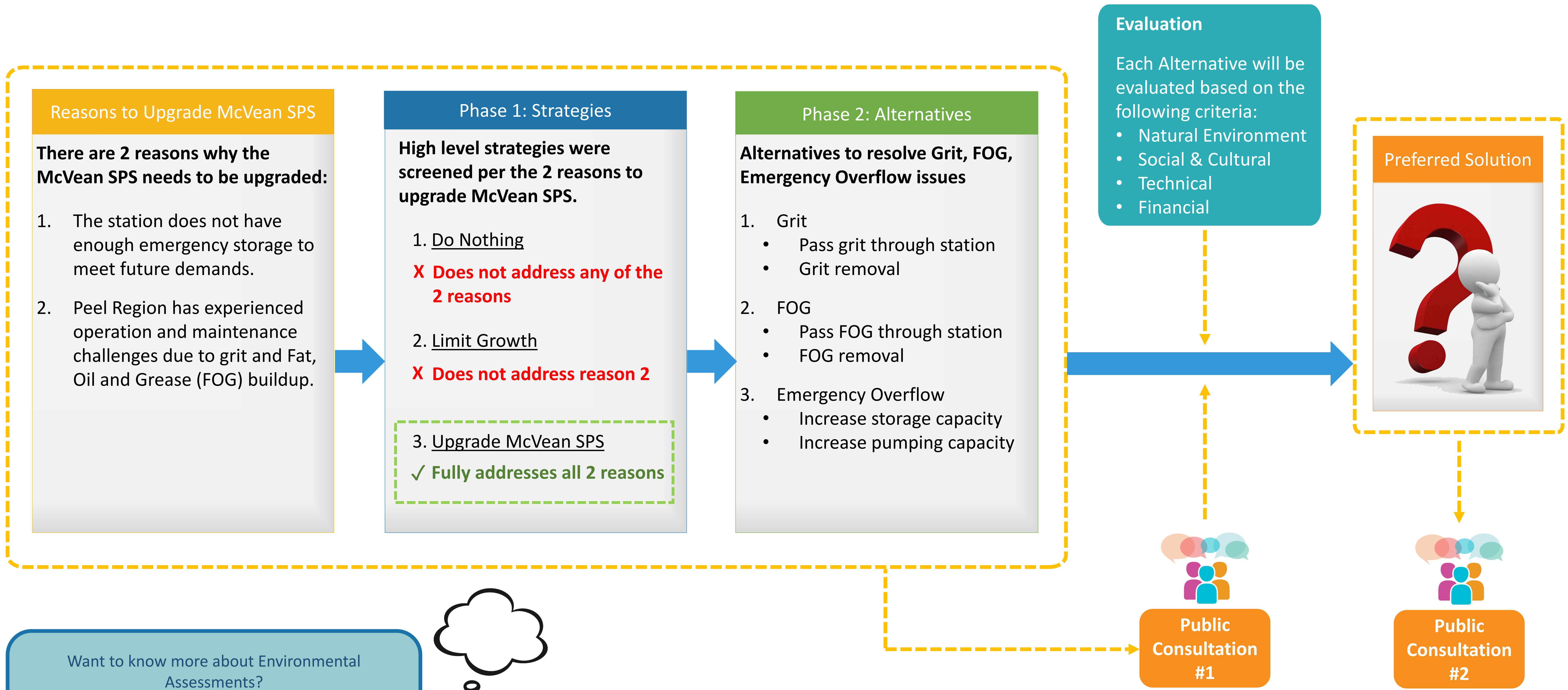
What is a Sewage Pumping Station?

Sewers use gravity to move sewage from high to low points in the sanitary system. Sewage pumping stations are installed at low points to push sewage from low to high points so that sewage will end up at the wastewater treatment plant.



McVean Sewage Pumping Station Environmental Assessment

Problem Solving Process



Want to know more about Environmental Assessments?

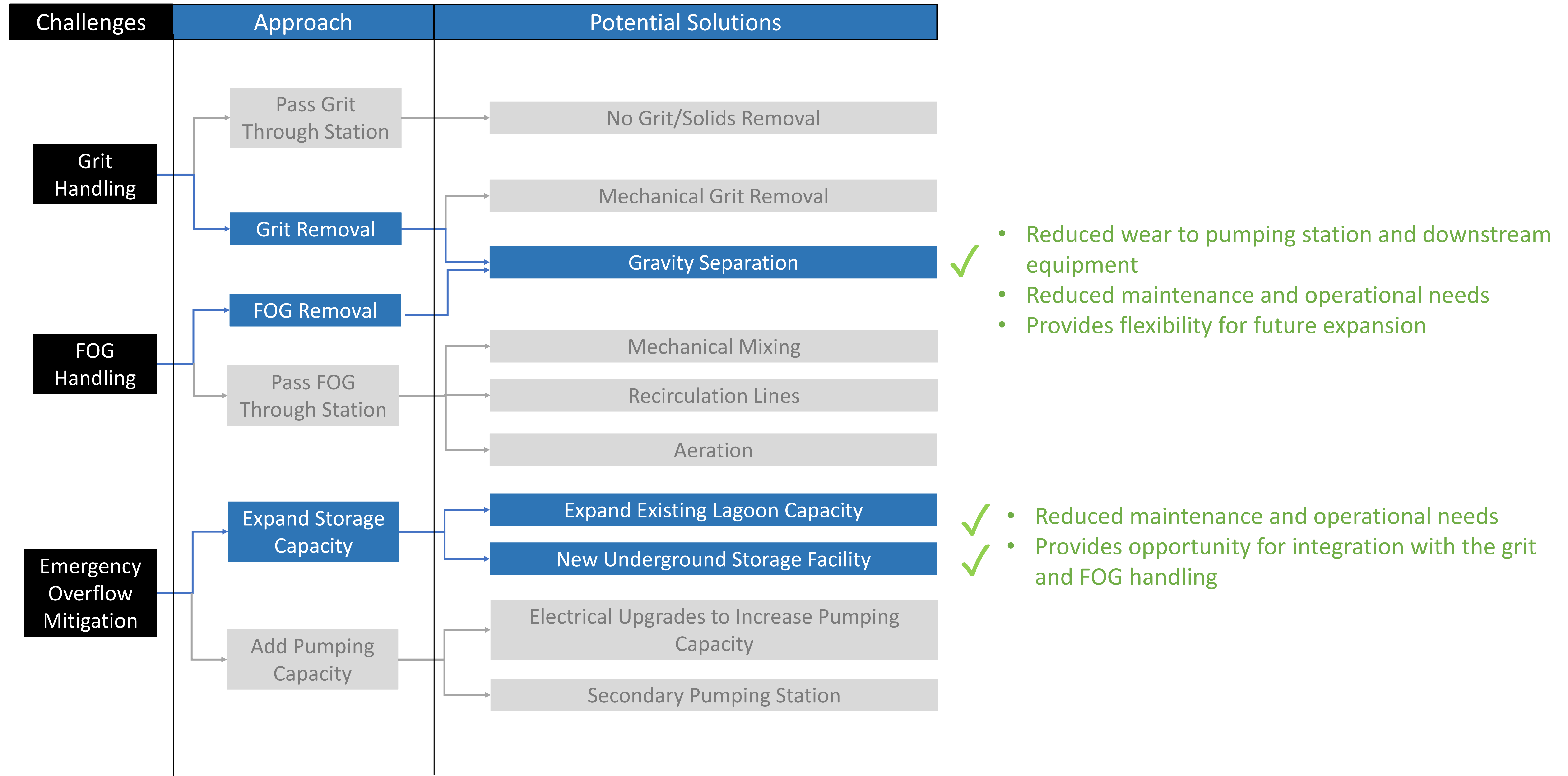
Check out our website at:
<https://www.peelregion.ca/pw/envIRON-assess/ea.htm>



McVean Sewage Pumping Station Environmental Assessment

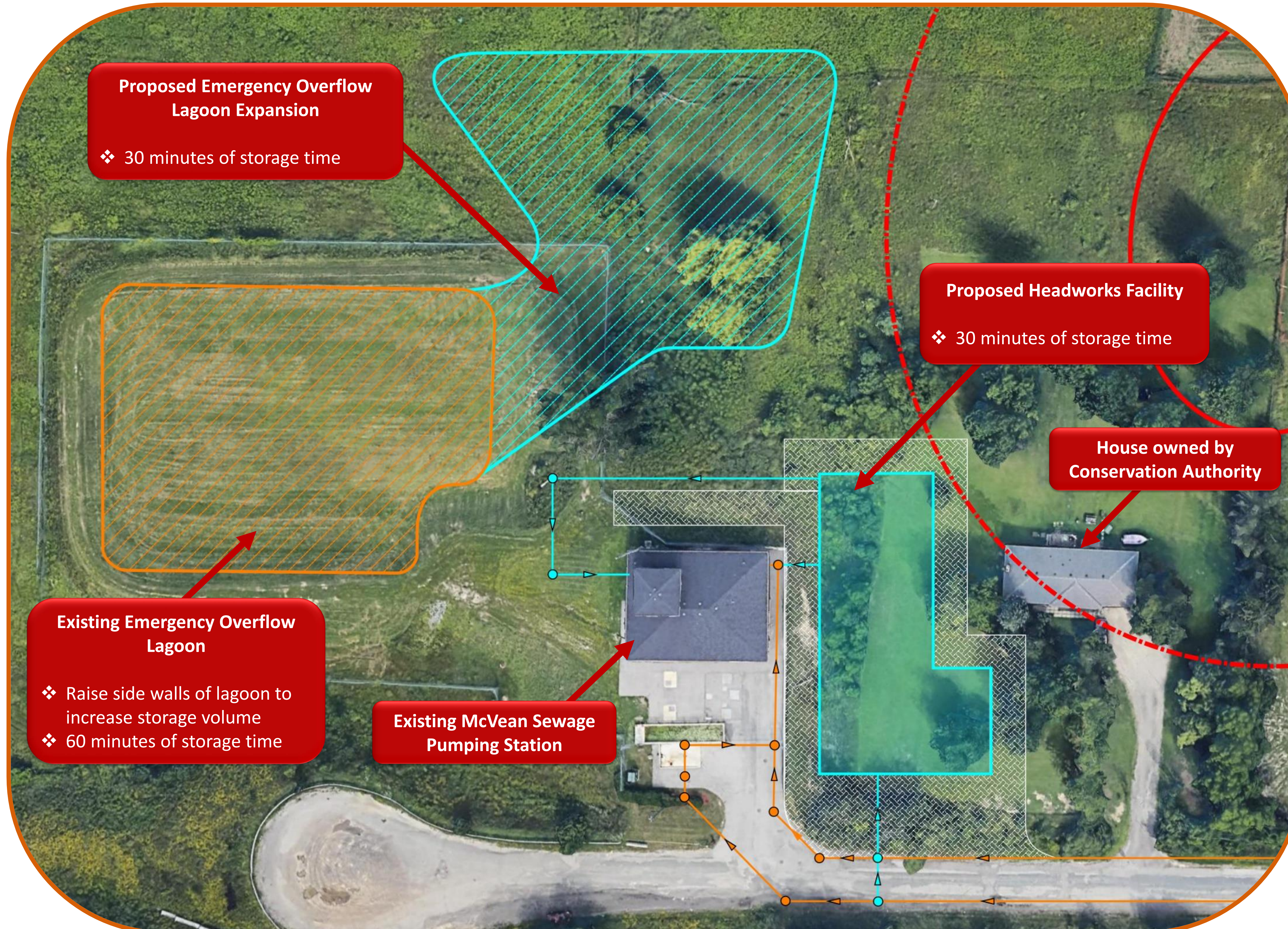


Grit, FOG, Emergency Overflow Alternative Selection



McVean Sewage Pumping Station Environmental Assessment

Grit, FOG, Emergency Overflow - Alternative 1



Technical Features

- Sanitary flows along Ebenezer Road will be redirected to the proposed Headworks Facility.
- The Headworks Facility will remove grit and FOG from the sewage before entering the McVean Sewage Pumping Station.
- The existing lagoon will be expanded.

Pros and Cons

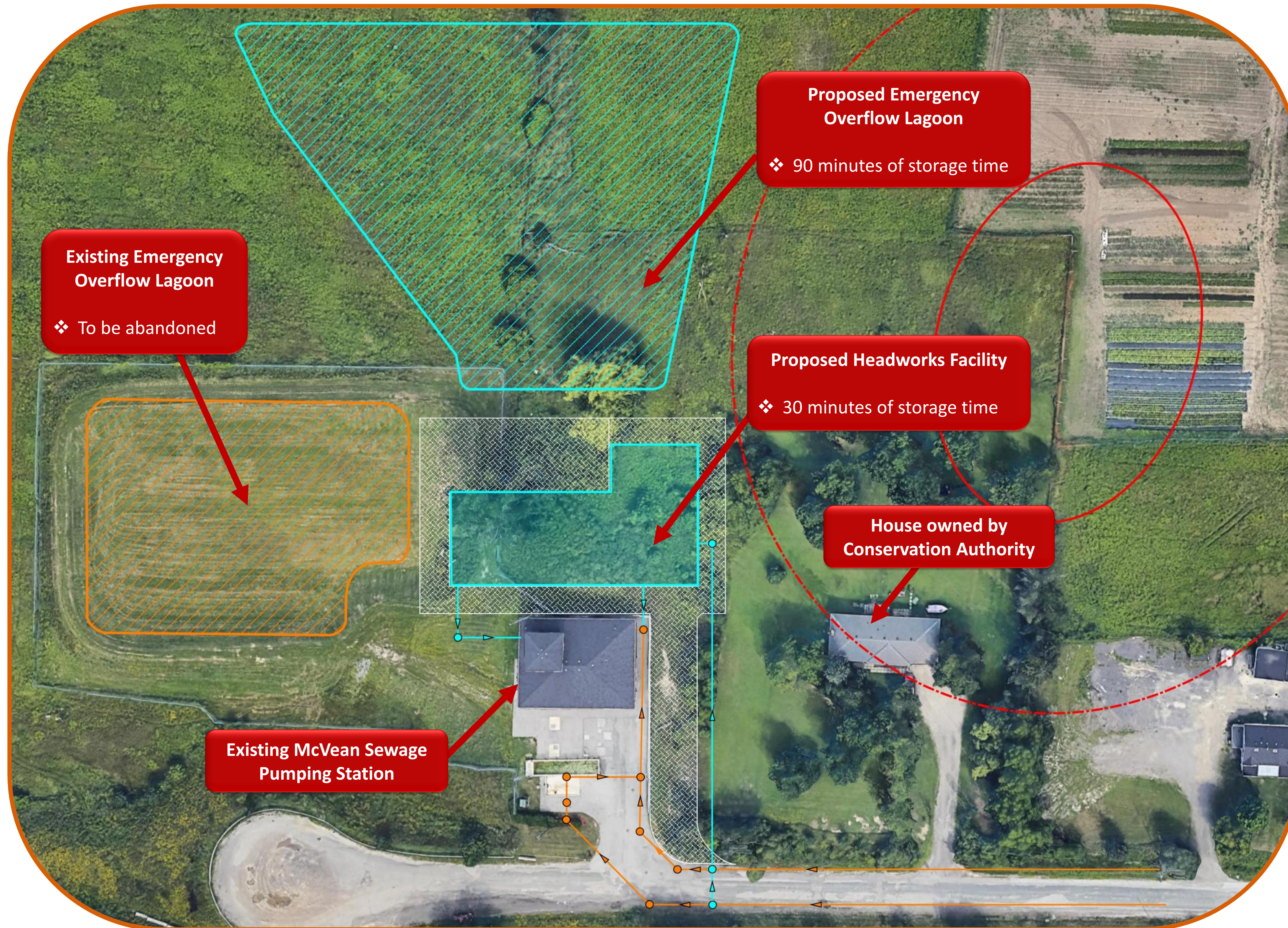
- Pros:
 - Lower capital cost
- Cons:
 - House near station will be heavily impacted during construction
 - Construction may impact archaeologically sensitive lands

Legend

- Existing Maintenance Hole
- Existing Sanitary Sewer Flow Direction
- Proposed Maintenance Hole
- Proposed Sanitary Sewer Flow Direction
- ▨ Proposed Access Road
- Archaeologically Sensitive Area
- - - Buffer for Archaeologically Sensitive Area

McVean Sewage Pumping Station Environmental Assessment

Grit, FOG, Emergency Overflow - Alternative 2



Technical Features

- Sanitary flows along Ebenezer Road will be redirected to the proposed Headworks Facility.
- The Headworks Facility will remove grit and FOG from the sewage before entering the McVean Sewage Pumping Station.
- The existing lagoon will be abandoned and a new lagoon will be built.

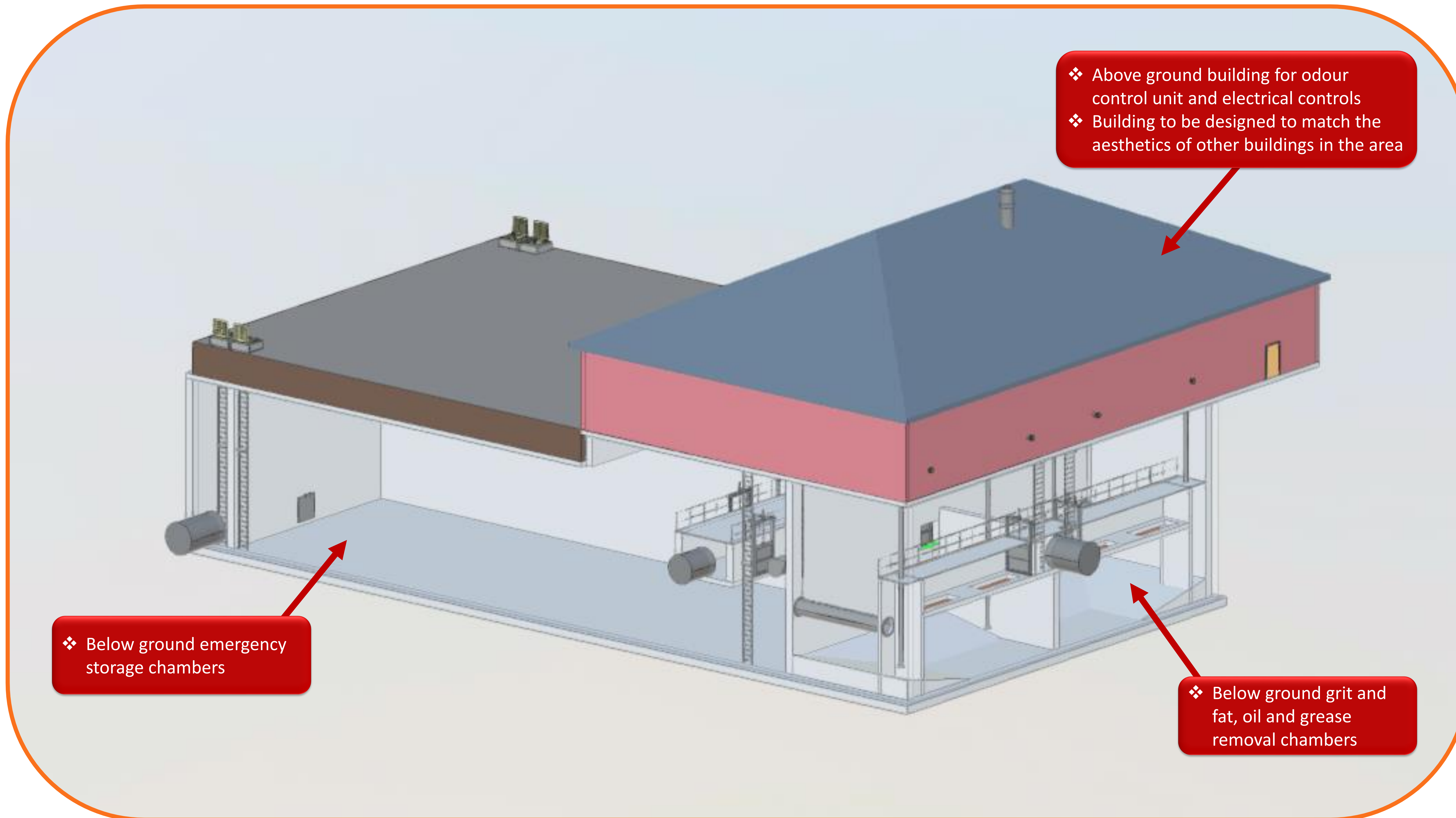
Pros and Cons

- Pros:**
 - Headworks Facility building is less visible from Ebenezer Rd.
- Cons:**
 - Higher capital cost

Legend

- Existing Maintenance Hole
- Existing Sanitary Sewer Flow Direction
- Proposed Maintenance Hole
- Proposed Sanitary Sewer Flow Direction
- Proposed Access Road
- Archaeologically Sensitive Area
- Buffer for Archaeologically Sensitive Area

Headworks Facility 3D Rendering



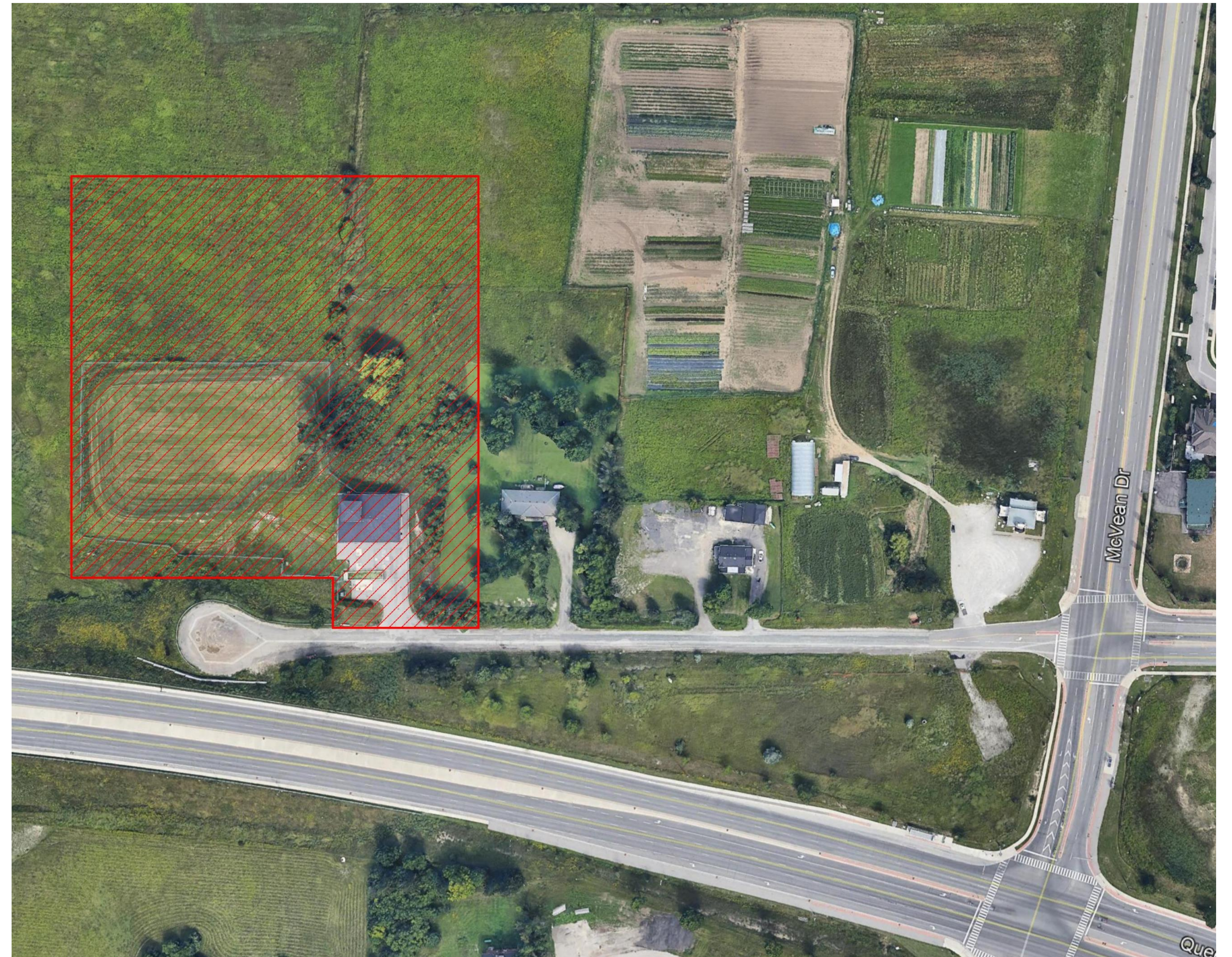
Mitigation Measures

How will you be impacted?

- Estimated construction duration: 18 - 24 months
- Noise and dust from heavy machinery
- Construction traffic through Ebenezer Road
- Once construction is complete, there will be no more dust, noise and traffic related construction impacts

How will we reduce the ways you are impacted?

- Construction work hours will comply with the City of Brampton noise by-law
- Construction work will be at the far west end of Ebenezer Road
- Truck movements will be scheduled to minimize impacts to residential streets



Legend

- ▨ Proposed Construction Compound

McVean Sewage Pumping Station Environmental Assessment

Next Steps

Stay Informed

If you would like to submit your comments directly to the Study Team, please contact:

Lyle LeDrew
Project Manager, Water & Wastewater
Region of Peel
Phone: 905-791-7800 ext. 7836
Email: Lyle.ledrew@peelregion.ca

Please provide your feedback before Saturday, August 29, 2021.

