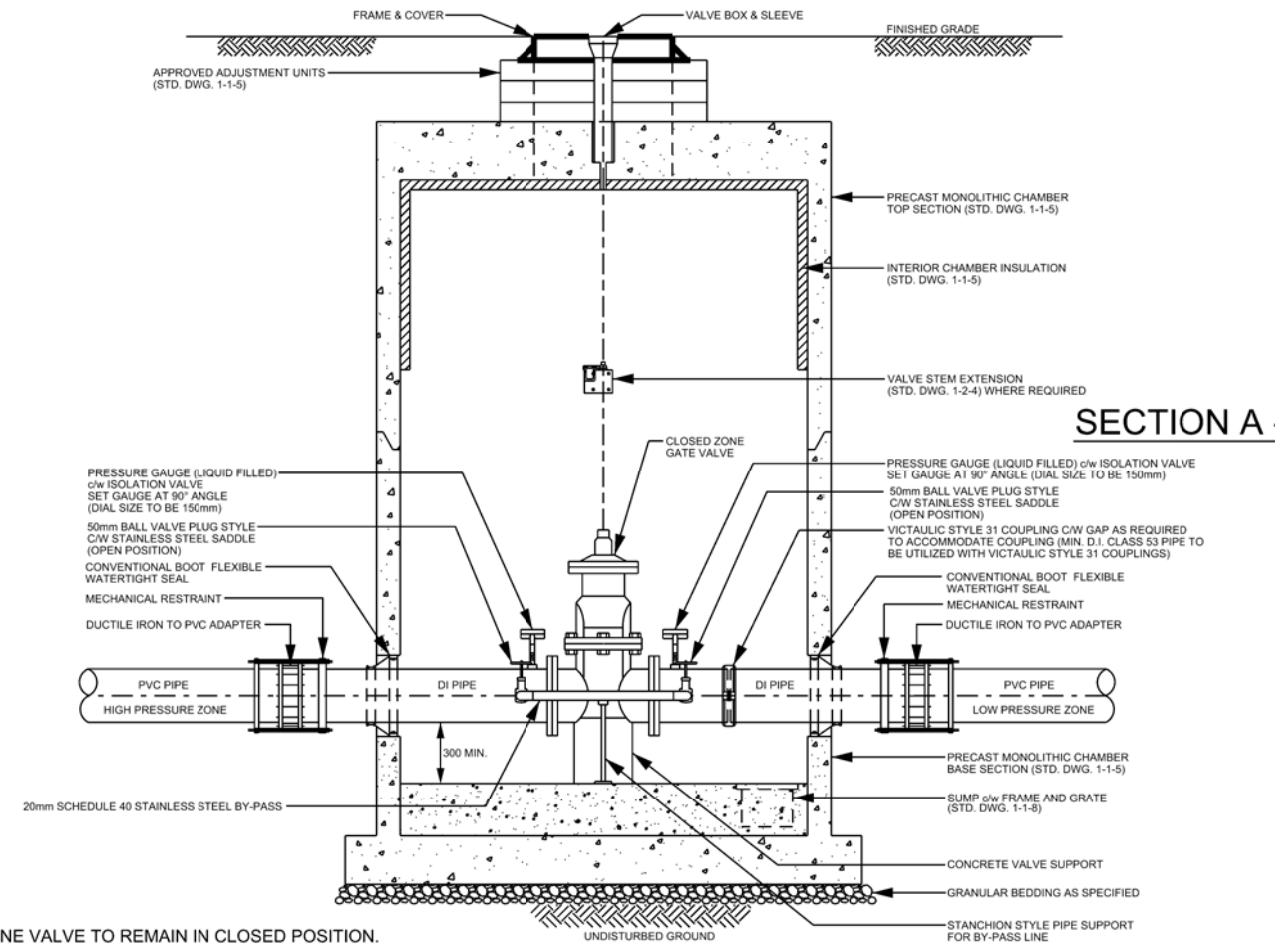


**PLAN**



**SECTION A - A**

- NOTE**
1. MAIN-LINE VALVE TO REMAIN IN CLOSED POSITION.
  2. BALL VALVES PLACED ON THE BY-PASS TO REMAIN IN THE OPEN POSITION.
  3. ALL VALVES TO BE RESILIENT SEAT TO AWWA C509, FUSION BONDED EPOXY (FBE) SHOP COAT FINISH ON INTERIOR AND EXTERIOR OF VALVE TO AWWA C550. INTERIOR COATING TO BE FBE ANSI/NSF 61 APPROVED.
  4. INTERIOR OF ALL STEEL (NOT STAINLESS STEEL) PIPE SHALL BE LIQUID EPOXY COATED TO AWWA C210 AND BE ANSI/NSF 61 APPROVED. ALL EXTERIOR SURFACES SHALL BE LIQUID EPOXY COATED TO AWWA C210.
  5. INTERIOR OF ALL DUCTILE IRON PIPE AND FITTINGS IN CONTACT WITH POTABLE WATER SHALL BE CEMENT MORTAR LINED TO AWWA C104.
  6. REFER TO STD. DWG. 1-2-6 FOR TYPICAL VALVE AND PIPE SUPPORT DETAILS. PROVIDE PIPE SUPPORTS WITHIN A MAXIMUM DISTANCE OF ONE PIPE DIAMETER FROM ALL VICTAULIC COUPLINGS.
  7. ALL PIPING, FITTINGS, VALVES, APPURTENANCES AND MECHANICAL RESTRAINTS TO BE c/w DENSO PASTE, DENSO MASTIC AND DENSO TAPE OR APPROVED EQUAL, APPLIED TO MANUFACTURER'S RECOMMENDATIONS.



**PUBLIC WORKS  
STANDARD DRAWING**

REV. DATE: JUNE 2018

APPROVED BY

DRAWN BY

E.O.

AINLEY GROUP, CL

STD. DWG. NUMBER

SCALE

**1-3-16**

N.T.S.

**PRESSURE ZONE BOUNDARY  
VALVE CHAMBER**