

Attention General Visitors

Residents may now have multiple visitors both indoors and outdoors, if space allows; speak to the Centre Leadership team for guidance on numbers if you plan on having multiple visitors.



Outdoor Visits

Outdoor visitors will need to undergo the screening process, if entry to the building is needed for screening, the person must wear a mask and perform hand hygiene upon entry.

All Children 14 and under *must be* accompanied by an adult.

Pets are not permitted, unless previously approved by the Centre.

Notes on COVID-19 Vaccination

Fully vaccinated means receiving the full series of a COVID-19 vaccine or combination of COVID-19 vaccines & the final dose was received at least 14 days ago.

Encourage your loved one to wear a mask if tolerated

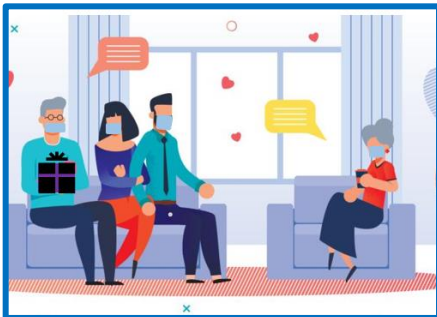
Both you and the Resident must be fully vaccinated to have close physical contact e.g., holding hands.

If you and/or the Resident are NOT fully vaccinated, you must maintain physical distance of 2 metres other than a brief hug for the duration of your visit.

Regardless of vaccination, you must wear a mask that covers your mouth, nose, and chin at all times during the visit.

Clean your hands often and before/after touching your mask.

Indoor Visits



Indoor visitors who provide valid proof they are fully vaccinated for COVID-19 do not need to be tested for COVID-19 to be able to enter.

Visitors who are not vaccinated, partially vaccinated, or do not wish to disclose vaccination status will be required to undergo a Rapid Antigen Test for indoor visits.

All visitors must be screened prior to entry and wear a medical mask, which will be provided.

Outdoor visits are strongly encouraged as a first option, wherever possible.

Cancellation/Discontinuation of visits:

For the health and safety of our Residents, visits will be discontinued if:

- The Resident is on self-isolation, their home area is on outbreak, or they have symptoms of COVID-19
- Visitor has symptoms of COVID-19 or fails the screening process or does not adhere to the Centre policy or the infection prevention and control (IPAC) measures of the Centre
- There is inclement weather such as extreme hot weather, heavy rain, thunderstorms/lightening, snow/ice.



Connecting through Virtual Visits

We encourage you to continue to connect with your loved ones in our Centre through virtual visits (e.g., Skype, video call, etc.), our staff are here to support you and provide assistance to the Residents as needed during the call.

Need More Information?

Find up-to-date information on our COVID-19 website. A link can be found at www.peelregion.ca/ltc or call us at the numbers below:

Tall Pines: 905-791-2449 ext.5415

Sheridan Villa: 905-791-8668 ext. 5418

Malton Village: 905-791-1179 ext. 5416

Davis Centre: 905-857-0977 ext. 5419

Peel Manor: 905-453-4140 ext. 5417