



Peel2041+

Regional Official Plan Review
and Municipal Comprehensive Review

Water Resources Policy Review and Update

Planning and Growth Management Committee, March 18, 2021

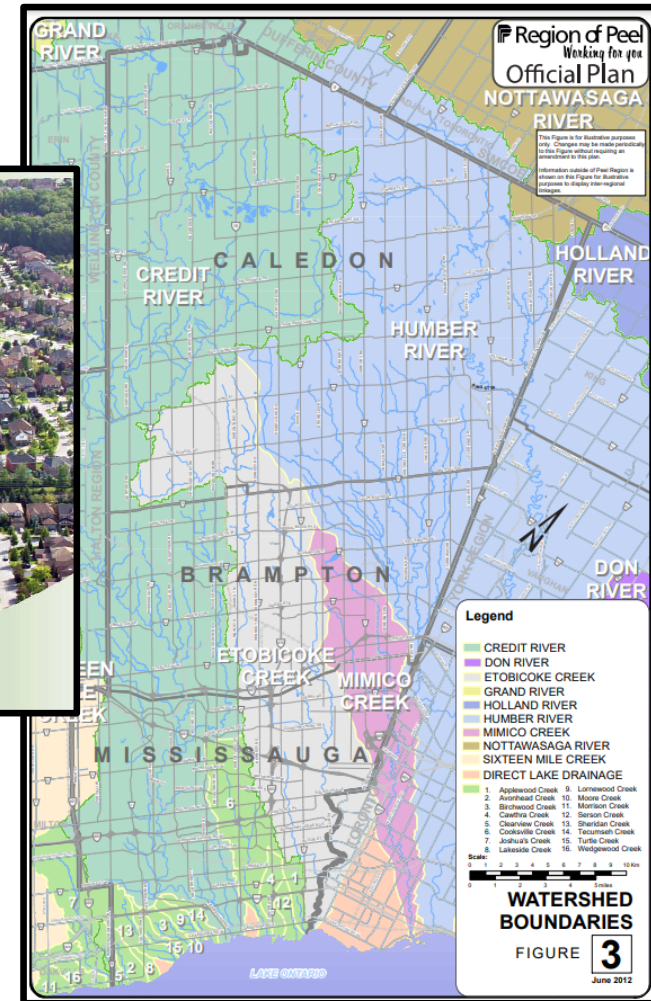
Gail Anderson, MCIP RPP

Principal Planner

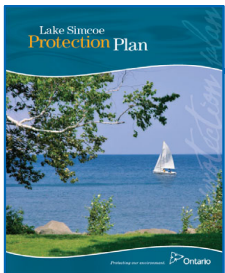




Water Resources

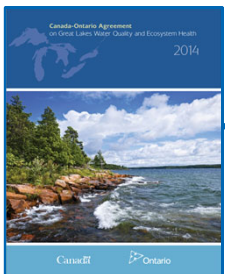


Provincial Policy Drivers



Lake Simcoe Protection Plan, 2012

- Improve water quality through infrastructure and land management best practices



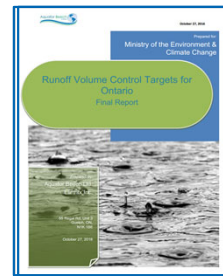
Great Lakes Protection Act and Strategy, 2015

- Lake Ontario protection



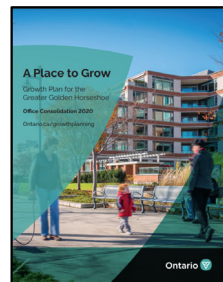
Source Water Protection Plans, 2015

- Protect sources of municipal drinking water



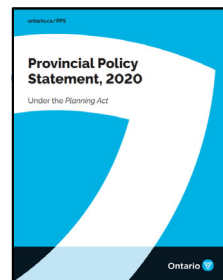
Stormwater Management, 2016

- Low impact development guidance and stormwater control



Growth Plan, 2019

- Identify a water resource system
- Undertake watershed scale planning

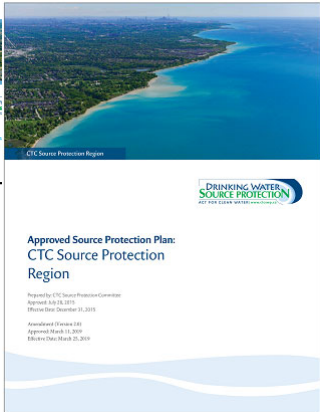
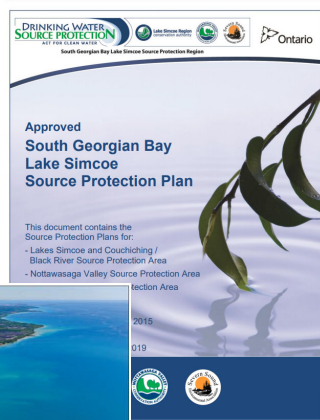
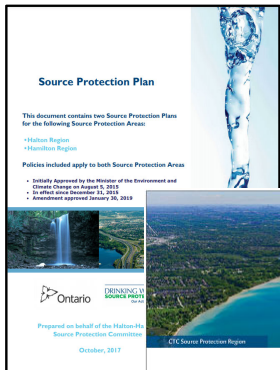


Provincial Policy Statement, 2020

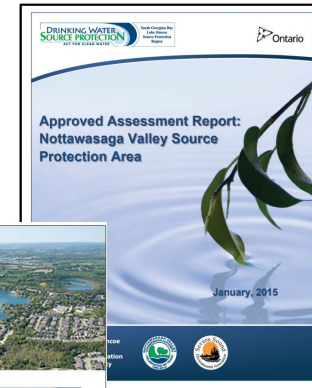
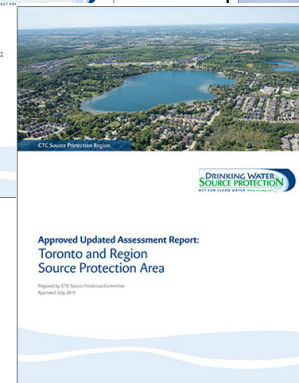
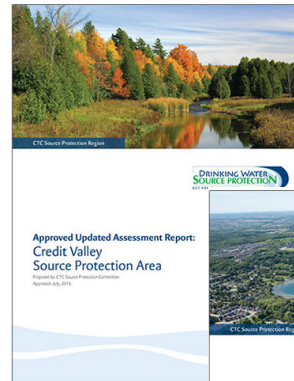
- Identify a water resource system
- Watershed Planning
- Promote green infrastructure
- Manage stormwater effectively



Provincial Policy Drivers: Source Water Protection



Source Protection Plans establish policy direction, including land use policies. Municipalities are required to address these policies in Official Plans.






Assessment Reports provide the technical background and direction for developing the policies and mapping.



Public and Stakeholder Engagement




Peel2041
Regional Official Plan Review

**Protecting Water Resources:
Roles and Responsibilities**
Peel 2041 Discussion Paper
November 2018





Peel2041
Regional Official Plan Review

**Protecting Water Resources:
Policy Options**
Peel 2041 Discussion Paper
November 2018



Peel2041
Regional Official Plan Review

**Protecting Water Resources:
Source Protection Plan
Implementation**
Peel 2041 Discussion Paper
November 2019

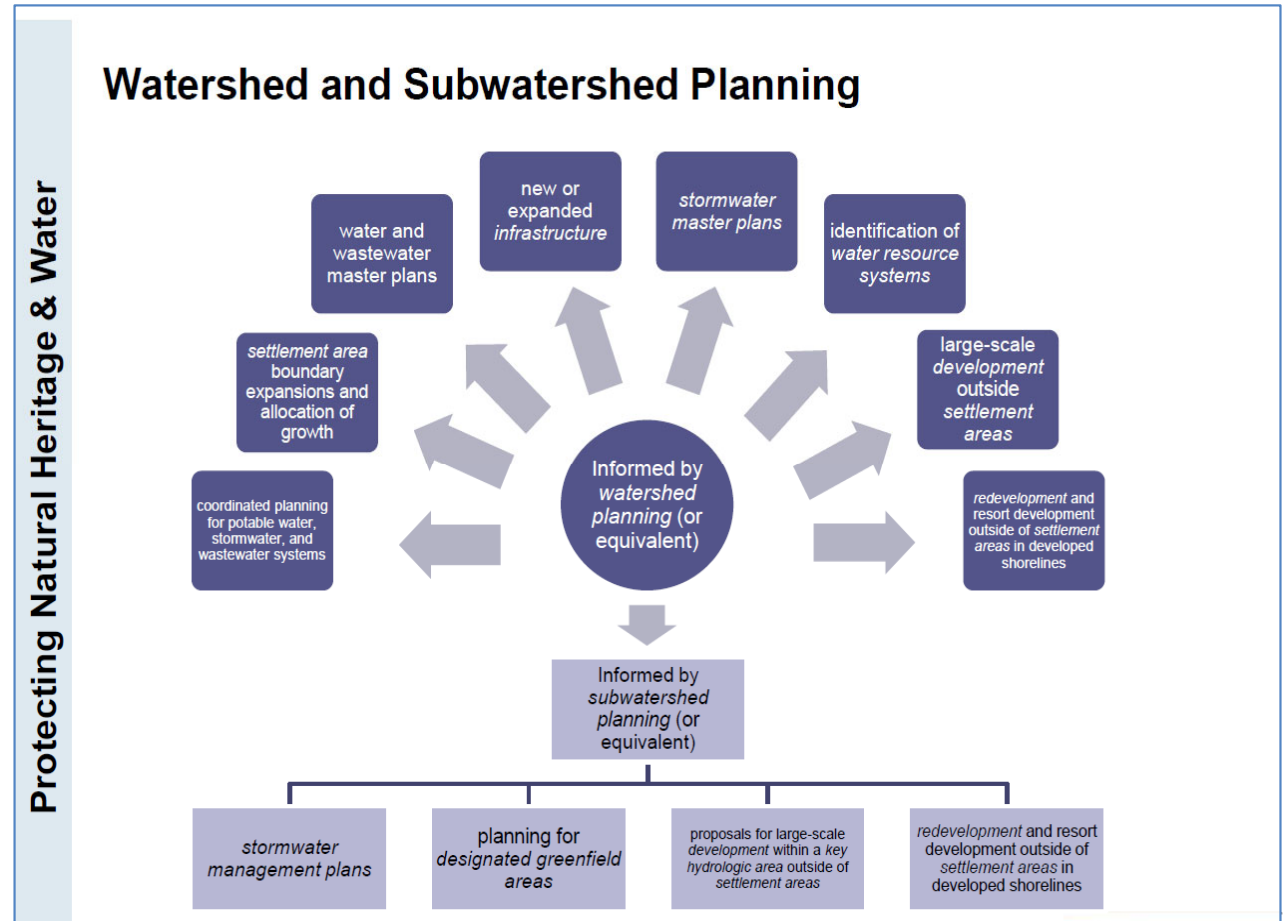




Watershed Planning and Management

Revised Official Plan s.2.2.5 Water Resources System and s.2.2.6 Watersheds

- Identify and protect a water resources system
- Support the preparation and implementation of watershed & subwatershed plans
- Protect water resources based on studies

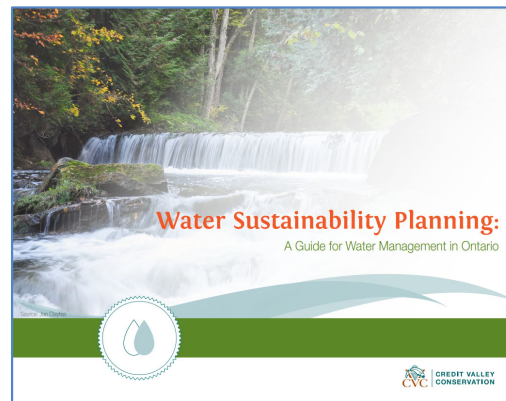
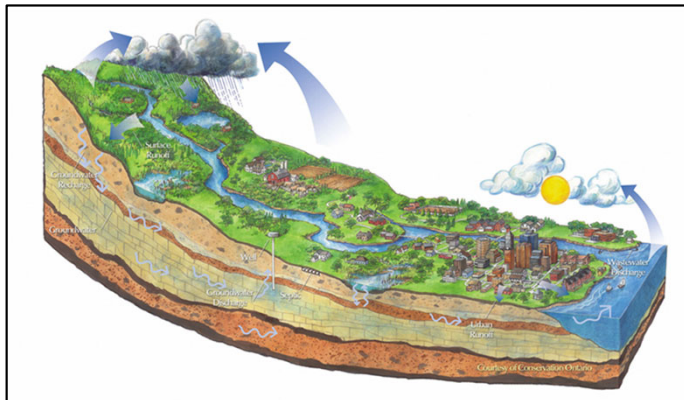




Stormwater Management and Green Infrastructure

New Official Plan s.2.2.7 Stormwater Management

- Watershed approach to manage stormwater
- Require stormwater master plans and management plans
- Provide guidance on the content of stormwater master plans
- Encourage the use of stormwater management best practices to maintain the natural hydrologic cycle, prevent increased flooding risk, replenish ground water resources and protect, improve or restore water quality





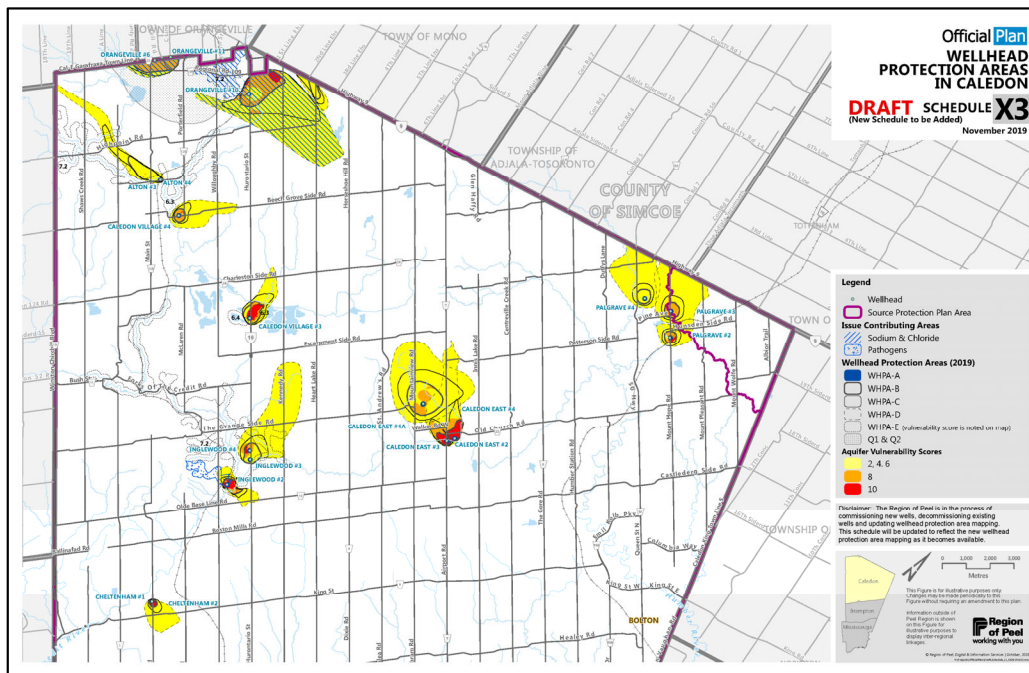
Source Water Protection

New Regional Official Plan s.2.2.8

- Identify vulnerable areas including
 - Wellhead protection areas
 - Highly vulnerable areas
 - Intake protection zones
 - Significant ground water recharge areas
 - Issue contributing areas
- Restrict incompatible land uses and significant drinking water threats.

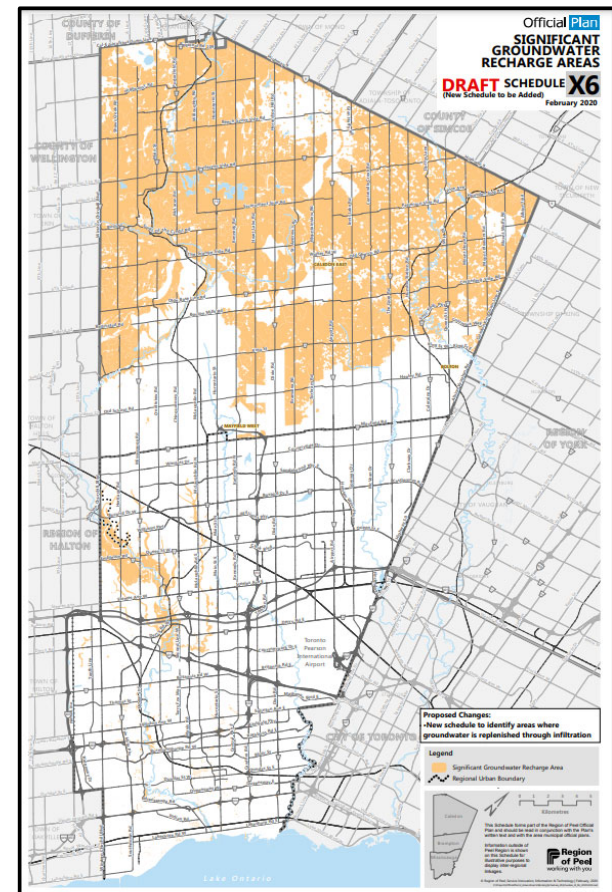
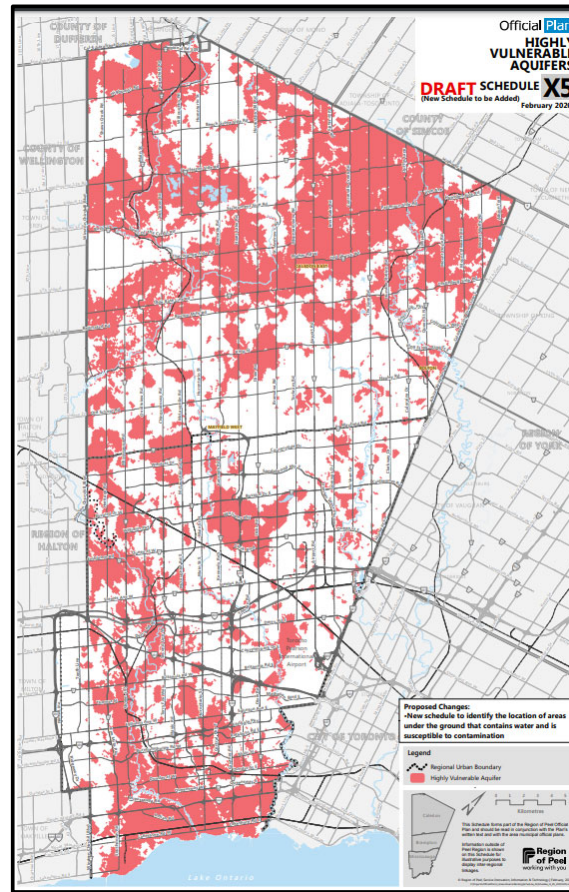
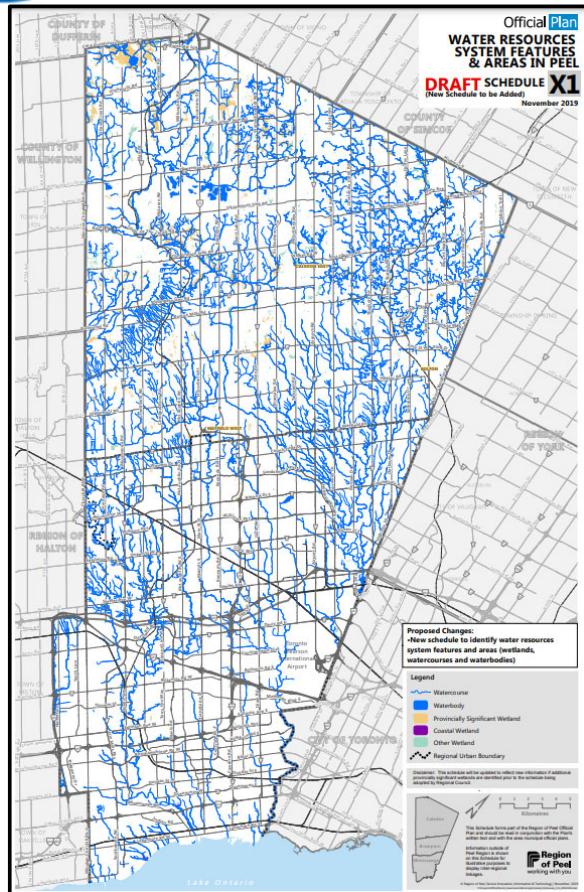


Proposed Mapping – Wellhead Protection Areas and Intake Protection Zones





Proposed Mapping – Water Resources System, Highly Vulnerable Aquifers and Significant Groundwater Recharge Areas





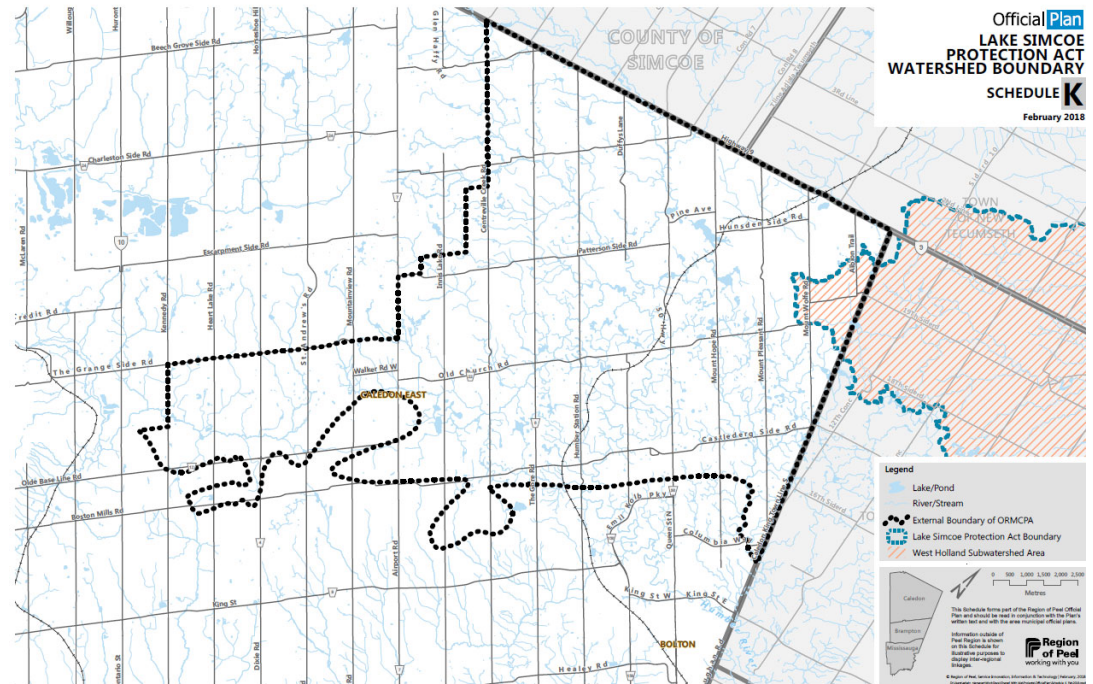
Other Amendments

Updated Lake Ontario Policies s.2.2.9

- Update the references to the strategies which protect the health of Lake Ontario

New Lake Simcoe Policies s.2.2.10

- Reference the relevant policies from the Lake Simcoe Protection Plan.



Next Steps/Questions?



- Minor revisions to the overall policies, with the objective of finalizing the draft policies by spring/summer 2021.
- Continued informal stakeholder engagement and consultation.
- Formal consultations, as required under the Planning Act, on the proposed policies.

Contact info:
Gail Anderson
Regional Planning and Growth Management Division
gail.anderson@peelregion.ca