

Transportation Planning



What is transportation planning?

Identifying policies, financing, and implementation of key transportation strategies and infrastructure (i.e. regional roads, active transportation facilities, etc.) and strategies in support of moving people and goods safely and efficiently.

What is the Region doing?

- Establishing a policy framework to manage growth expected in Peel by 2041 through a balanced approach that shifts 50 percent of travel to sustainable modes such as walking, cycling, public transit and carpooling
- Maximizing the use of existing transportation infrastructure to ensure financial feasibility whilst keeping people and goods moving safe and efficiently

Why are transportation policies important?

- Implement the Long Range Transportation Plan, which focuses on sustainable mobility, safe mobility and vehicular and goods movement mobility
- Implement provincial policy directions for infrastructure resiliency, climate change adaptation and sustainable communities.
- Take into account input provided by the public and stakeholders
- Enable and strengthen partnerships by collaborating, supporting and providing guidance to adjacent municipalities, government agencies and external stakeholders

Regional Official Plan policies will...

- Focus on balancing the needs of all road users, including pedestrians, cyclists, transit-users and motorists through a suite of interventions such as transportation demand management strategies, sustainable transportation infrastructure and transit-supportive development
- Increase the efficiency and safety of the goods movement network through programs such as Off-Peak Delivery and Long Combination Vehicles
- Plan for and implement improvements to transportation services, such as TransHelp, to meet the accessibility needs of all users
- Ensure practices and performance measures are in place to monitor and maintain a safe and efficient Regional transportation network
- Establish and support a coordinated network linking the major road network, the provincial freeway, areas of significant employment activity and major goods movement corridors



How can I stay involved?

Follow @regionofpeel twitter page or request notification at planpeel@peelregion.ca

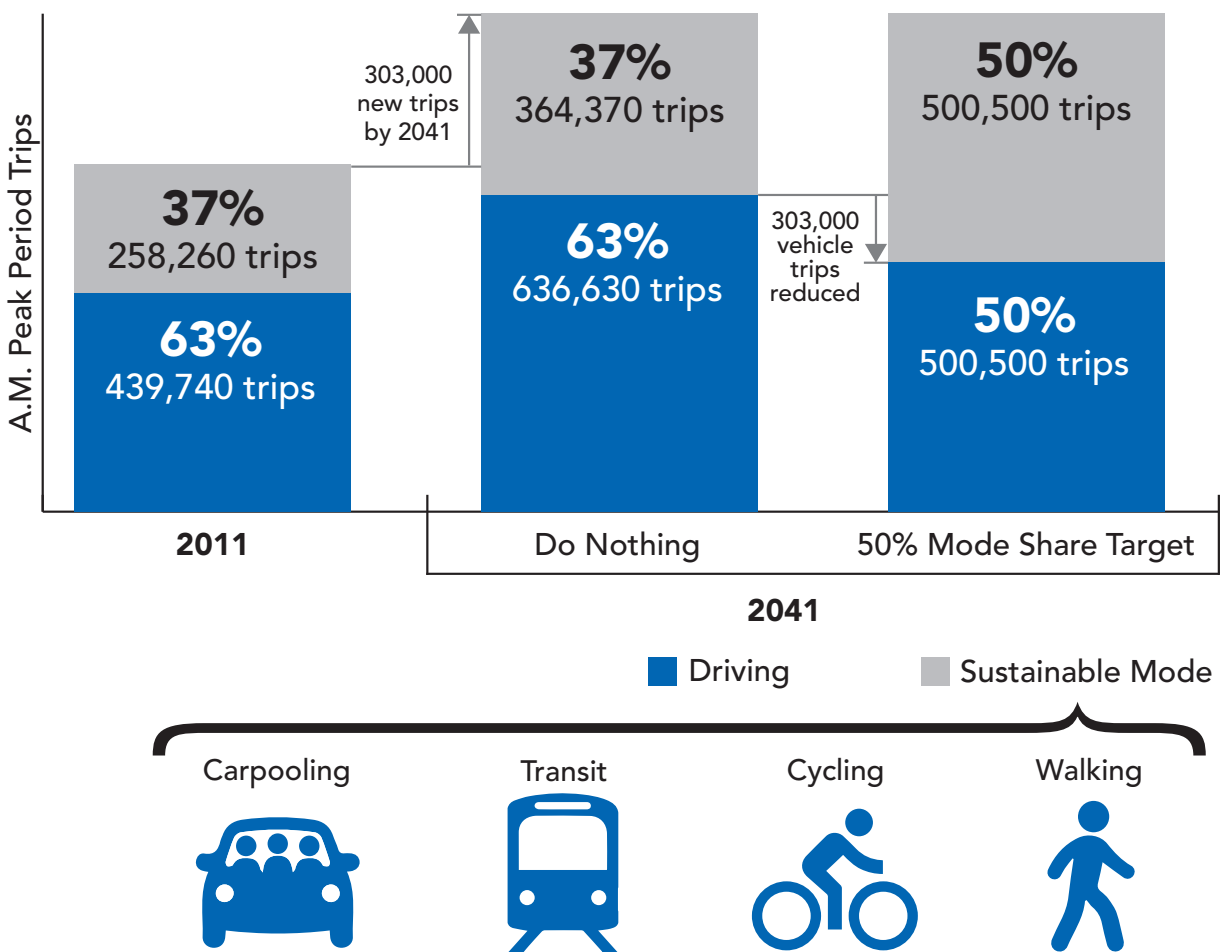
Transportation Planning



How are transportation planning policies formed?

Policies are driven by provincial requirements, current and future trends in transportation identified through the Long Range Transportation Plan, as well as extensive technical analysis and consultation.

A.M. Peak Travel Demand, 2041 Horizon



By 2041, the Region of Peel will have an approximate population of 2 million people and 970,000 jobs. Translating this growth onto the transportation network amounts to a 45% increase in vehicle trips in the morning peak period, or the equivalent of 303,000 additional trips across the Regional network. The balanced approach focuses on providing a transportation network that establishes sustainable modes as a practical element of the system to maintain capacity.



How can I stay involved?

Follow @regionofpeel twitter page or request notification at planpeel@peelregion.ca

peelregion.ca/officialplan/review/