

Other Policies



Other Policies:

- Waste Management

Following a review of the Provincial policy framework and Regional strategies, other policy focus areas have been identified in need of updates.

One of these policy focus areas is [waste management](#).

Image: Curbside Waste Collection

Waste Management



Waste Management

Overview



Why is Waste Management Important?



Other Policies

Waste Management



Waste Management

Overview

Why is Waste Management important?

The Region of Peel recognizes the importance of providing reliable, cost-effective and environmentally responsible waste management services to residents and businesses throughout the Region. Additionally, the Region has set the visionary goals of zero waste from residential sources and zero greenhouse gas emissions from residential waste management and move toward a circular economy, where we continually circulate resources, materials and nutrients in such a manner as to retain their productive value. The adoption of the circular economy approach is expected to lead to better environmental and economic outcomes in the Region.

Waste Management in Peel

- The Region of Peel is responsible for the collection, processing and disposal of waste generated by residents, eligible small businesses, municipal facilities and schools. The Region is also responsible for monitoring closed landfill sites and promoting and educating residents on waste diversion programs.
- The Region provides single-family and multi-residential waste collection and operates six Community Recycling Centres where residents can drop off several types of items including garbage, yard waste, household hazardous waste, electronics, recyclable and reusable items.

The policies and mapping proposed in the next slides as part of the Waste Management Focus Area policy review inform the design and delivery of waste management services and programs to achieve a circular economy with zero waste from residential sources and zero greenhouse gas emissions from residential waste management.

Image: Peel Integrated Waste Management Facility in Brampton

Waste Management

Challenges and Opportunities

Waste Generation and Diversion

Peel generates more than 500,000 tonnes of residential waste per year.

In 2018, Peel diverted 50% of its waste from landfills.

Approximately half of what Peel residents disposed of as garbage was material that could have been diverted from landfill.

Figure 1 to the right shows the proportion of waste disposed (in landfill) and materials diverted from landfill in 2018.

Figure 2 to the right shows the composition of garbage generated by Curbside (e.g. pick-up from houses) and Multi-Residential (e.g. apartment buildings) Sectors in 2018.

Waste Management

Challenges and Opportunities



Other Policies

re 1

Waste Management

Challenges and Opportunities

Waste Generation and Diversion

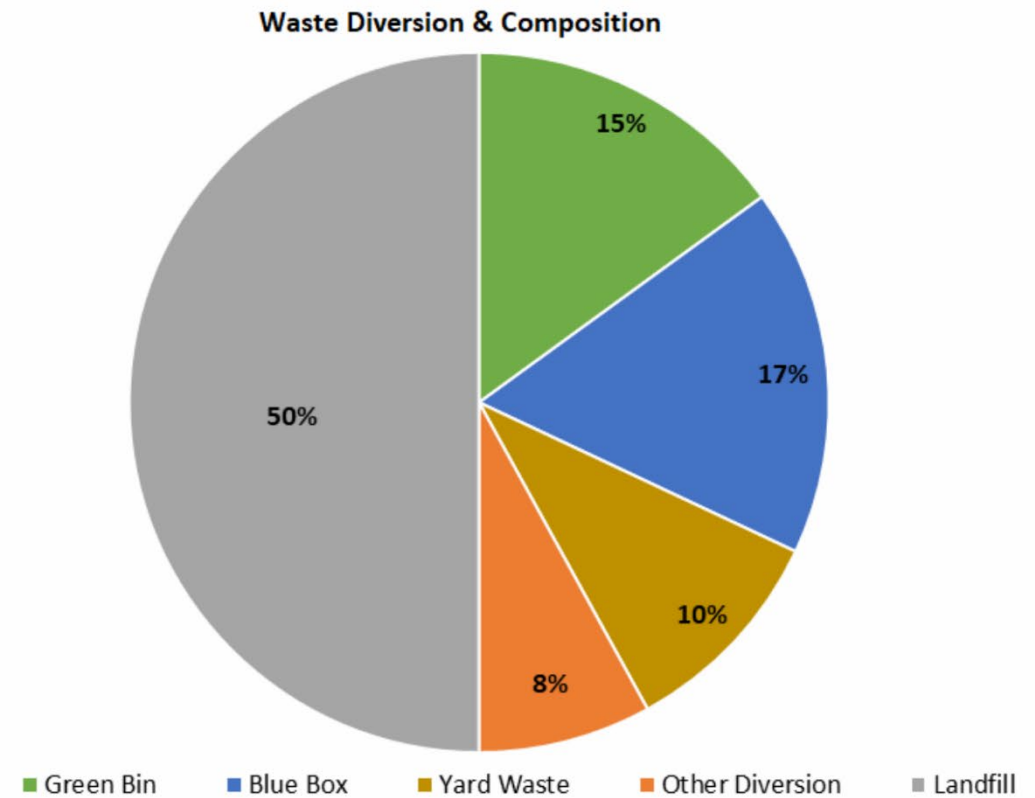
Peel generates more than 500,000 tonnes of residential waste per year.

In 2018, Peel diverted 50% of its waste from landfills.

Approximately half of what Peel residents disposed of as garbage was material that could have been diverted from landfill.

Figure 1 to the right shows the proportion of waste disposed (in landfill) and materials diverted from landfill in 2018.

Figure 2 to the right shows the composition of garbage generated by Curbside (e.g. pick-up from houses) and Multi-Residential (e.g. apartment buildings) Sectors in 2018.



Waste Management

Challenges and Opportunities

Roadmap to a Circular Economy

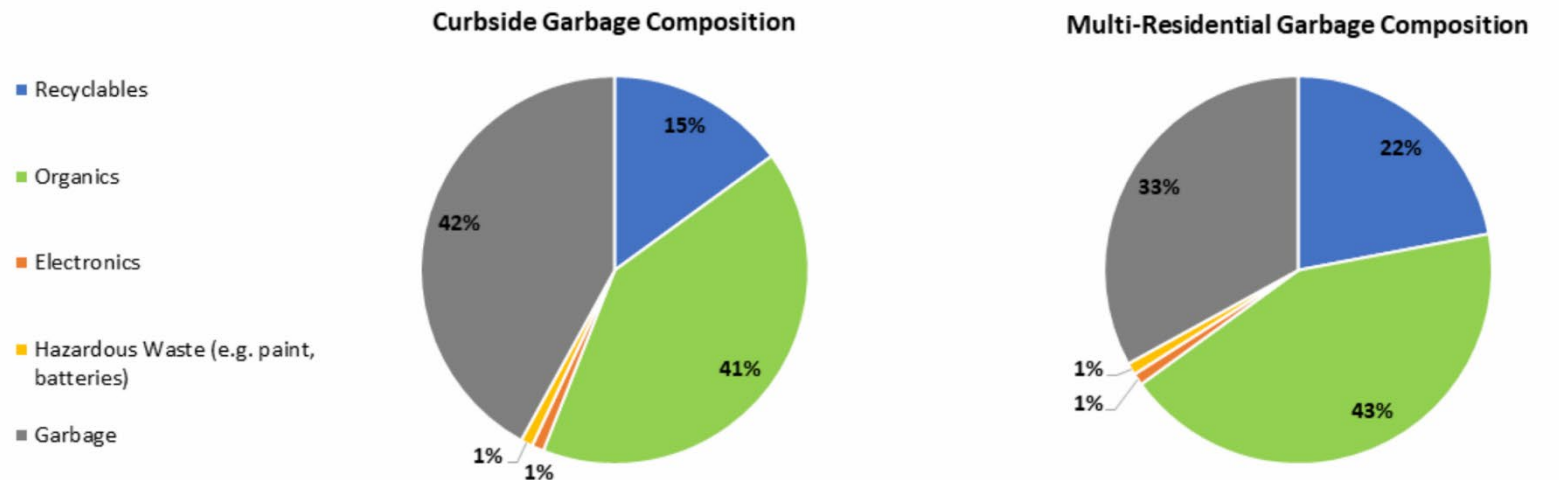
Regional Council adopted a goal of 75% 3Rs waste diversion from landfill by 2034.

To achieve this diversion rate, Peel must increase resources recovered from waste by increasing participation in waste reduction and resource recovery programs.

Peel's Roadmap to a Circular Economy sets out the following objectives to support the goal of 75% waste diversion:

1. Minimize waste generation
2. Maximize recovery of resources from waste
3. Design and deliver waste management services that meet the needs of the

re 2



Other Policies

Waste Management

Challenges and Opportunities

Roadmap to a Circular Economy

Regional Council adopted a goal of 75% 3Rs waste diversion from landfill by 2034.

To achieve this diversion rate, Peel must increase resources recovered from waste by increasing participation in waste reduction and resource recovery programs.

Peel's Roadmap to a Circular Economy sets out the following objectives to support the goal of 75% waste diversion:

1. Minimize waste generation
2. Maximize recovery of resources from waste
3. Design and deliver waste management services that meet the needs of the customer in a cost-effective manner

The diagram to the right shows how an ideal circular economy would function.

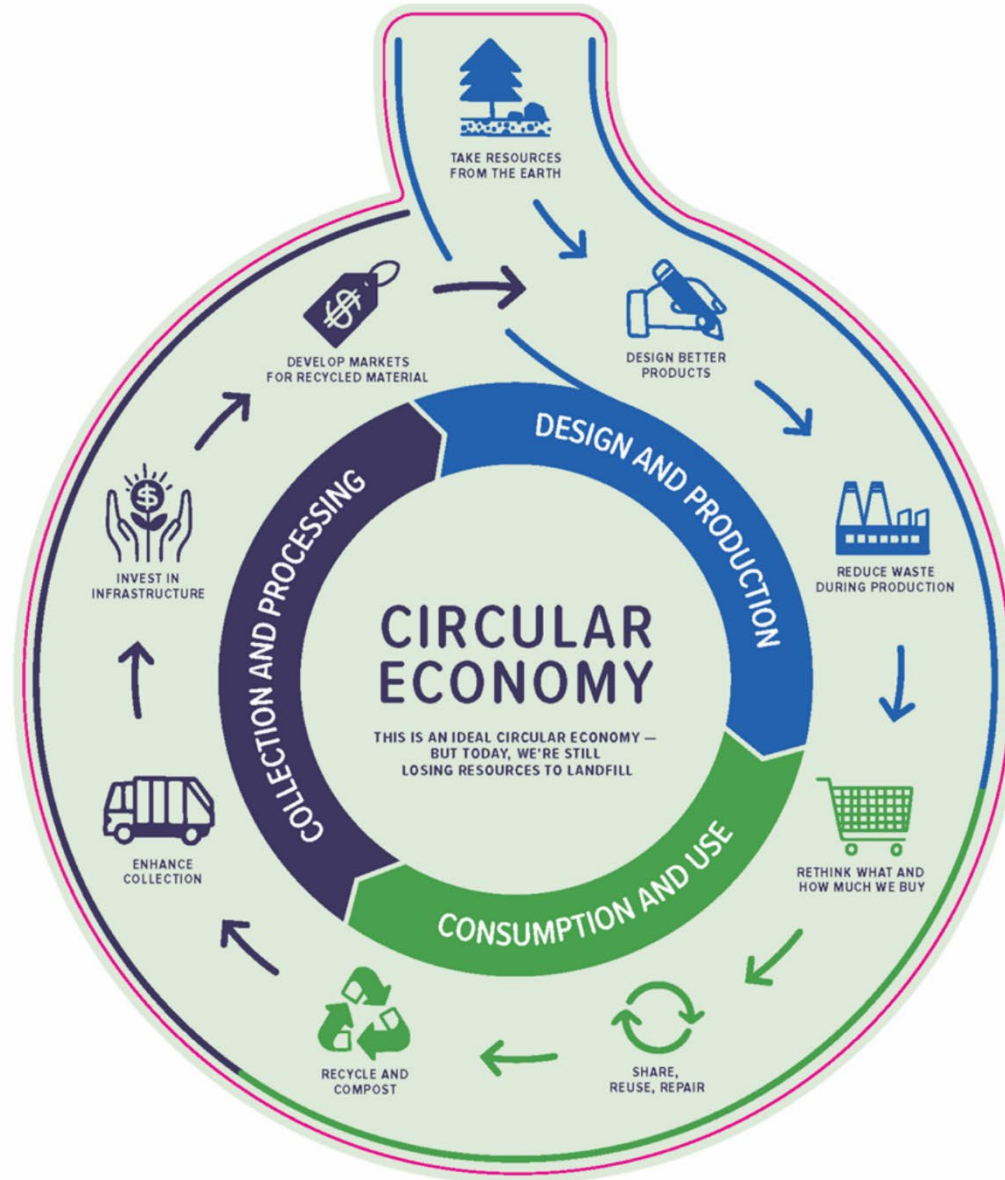
Image: Circular Economy Approach: a system that uses reuse, recycling and remanufacturing to circulate resources in such a manner so as to retain the productive value of materials and products in the economy for as long as possible.

Waste Management

Policy Framework

Waste management policies are in place to provide reliable, cost-effective and environmentally responsible waste management services to Peel's residents, eligible small businesses and municipal and institutional facilities.

Waste management policies in the Regional Official Plan will reflect the Provincial policy framework and Regional strategies. A [discussion paper](#) has been developed to respond to the necessary requirements which include:



Other Policies

Waste Management

Policy Framework

Waste management policies are in place to provide reliable, cost-effective and environmentally responsible waste management services to Peel's residents, eligible small businesses and municipal and institutional facilities.

Waste management policies in the Regional Official Plan will reflect the Provincial policy framework and Regional strategies. A [discussion paper](#) has been developed to respond to the necessary requirements which include:

[Environmental Protection Act](#)

- Requires municipalities to reduce waste sent to landfill through reduction, reuse and recycling programs.

[Provincial Policy Statement, 2020](#)

- Includes waste management as an element of municipal infrastructure planning.

[Waste-Free Ontario Act, 2016](#)

- Establishes full producer responsibility for end-of-life management of products and packaging.

[Strategy for a Waste-Free Ontario, 2017](#)

- Sets the goals of zero-waste and zero-GHG emissions from the waste sector.

[Food & Organic Waste Policy Statement](#)

- Provides direction to increase waste reduction and resource recovery of food and organic waste.

[Made-in-Ontario Environment Plan](#)

- Outlines actions to be taken by the Province that supports reducing litter and waste.

[Reducing Litter & Waste in our Communities](#)

- Expands on commitments of the Made-in-Ontario Environment Plan.

[A Place to Grow: Growth Plan for the Greater Golden Horseshoe](#)

- Province's initiative to plan for development that supports economic prosperity, protects the environment and helps communities achieve a high quality of life.

Waste Management

Proposed Policies

Objectives

- Minimize waste generation from residents.
- Promote and support climate change initiatives.
- Maximize reduction and recovery of resources and waste materials.
- Establish and maintain a reliable, cost-effective and environmentally responsible system for managing waste.
- Recognize the role the Region plays in reducing the environmental impact of waste management activities.

General Policies

- Locate and design waste facilities in accordance with policies, plans, legislation and standards.
- Require new developments to comply with Waste Collection Design Standards and provide infrastructure to facilitate participation in diversion programs.

Food & Organic Waste

- Promote resource recovery of food and organic waste
- Require new developments to include facilities for collection of food and organic waste that provides convenient and safe access for residents and waste collection vehicles

Thermal Treatment & Alternative Resource Recovery

- Recognize thermal treatment and other alternative technologies as options to recover resources from residual waste.

Peel2041

Regional Official Plan Review

Waste Management

Peel 2041 Discussion Paper

August 2020



**Region
of Peel**
working with you

Waste Management Discussion Paper

August 2020

This policy discussion paper (including any attachments) has been prepared using information current to the report date. It provides an assessment of provincial policy conformity requirements, recognizing that Provincial plans and policies were under review and are potentially subject to change. The proposed direction contained in this discussion paper will be reviewed to ensure that any implementing amendments to the Regional Official Plan will conform or be consistent with the most recent in-effect provincial policy statement, plans and legislation. Additional changes will not be made to the contents of this discussion paper.

Other Policies

Waste Management

Proposed Policies

Objectives

- Minimize waste generation from residents.
- Promote and support climate change initiatives.
- Maximize reduction and recovery of resources and waste materials.
- Establish and maintain a reliable, cost-effective and environmentally responsible system for managing waste.
- Recognize the role the Region plays in reducing the environmental impact of waste management activities.

General Policies

- Locate and design waste facilities in accordance with policies, plans, legislation and standards.
- Require new developments to comply with Waste Collection Design Standards and provide infrastructure to facilitate participation in diversion programs.

Food & Organic Waste

- Promote resource recovery of food and organic waste
- Require new developments to include facilities for collection of food and organic waste that provides convenient and safe access for residents and waste collection vehicles

Thermal Treatment & Alternative Resource Recovery

- Recognize thermal treatment and other alternative technologies as options to recover resources from residual waste.

Industrial, Commercial & Institutional and Construction & Demolition Waste

- Consider options to address industrial, commercial and institutional waste diversion.
- Encourage materials generated at construction and demolition sites to be diverted and reused.

Intensification

- Encourage local municipalities to consider economic and policy tools for all multi-residential buildings to encourage waste diversion.

Partnerships & Collaboration

- Considers potential partnerships with neighbouring municipalities and private industry when exploring development of new waste infrastructure.

Maintaining Closed Landfill Sites

- Recognize that Caledon landfill site is now closed.
- Maintain closed landfill sites to protect the environment, public health, and adjacent land uses.

Draft Policies in the Official Plan Office Consolidation – June 25, 2020

- The December 2018 Region of Peel Office Consolidation has been updated to now show tracked changes illustrating draft policies as of June 25, 2020. Policy Changes related to Waste Management are found primarily in [Section 6.5. Draft policies – June 25, 2020](#).
- [A Policy and Mapping Summary Table](#) has been developed to provide a quick high-level summary of the key policy and mapping changes proposed.
- *This information has been prepared as reference for consultation purposes only, and does not represent adopted, approved or in-effect policies (see [in-effect Official Plan](#) and adopting by-law itself for current policies).*

Image: Region of Peel Material Recovery Facility

Waste Management

Proposed Mapping

Figure Y7 (formerly Figure 10) – Waste Management Sites

In the updated Figure Y7 of Waste Management Sites in Peel, several additions are included:



Other Policies

Waste Management

Proposed Mapping

Figure Y7 (formerly Figure 10) – Waste Management Sites

In the updated Figure Y7 of Waste Management Sites in Peel, several additions are included:

- Heart Lake Community Recycling Centre in Brampton
- Future Peel Renewable Natural Gas Facility in Brampton

There is also the deletion of the now decommissioned Caledon Composting Facility in the Town of Caledon.

An additional change pertains to the Caledon Landfill, which is now considered closed.

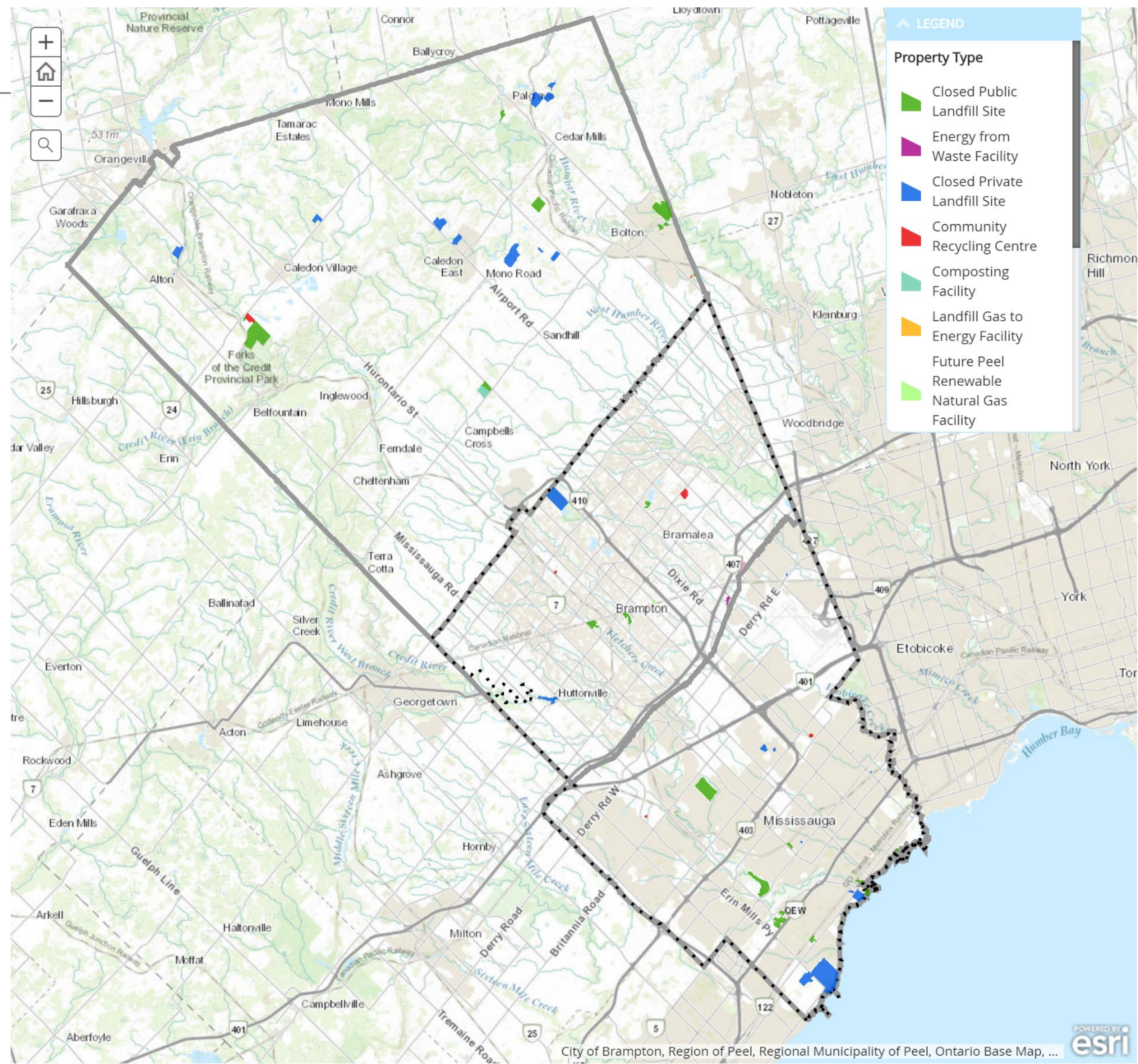
[Link to PDF](#)

Feedback

We want to hear from you!

Please fill in the survey to the right.

If you have any questions, please feel free to contact Dave below:



Other Policies

- *This information has been prepared as reference for consultation purposes only, and does not represent adopted, approved or in-effect policies (see [in-effect Official Plan](#) and adopting by-law itself for current policies).*

Image: Region of Peel Material Recovery Facility

Waste Management

Proposed Mapping

Figure Y7 (formerly Figure 10) – Waste Management Sites

In the updated Figure Y7 of Waste Management Sites in Peel, several additions are included:

- Heart Lake Community Recycling Centre in Brampton
- Future Peel Renewable Natural Gas Facility in Brampton

There is also the deletion of the now decommissioned Caledon Composting Facility in the Town of Caledon.

An additional change pertains to the Caledon Landfill, which was is now considered closed.

[Link to PDF](#)

Feedback

We want to hear from you!

Please fill in the survey to the right.

If you have any questions, please feel free to contact Dave below:



Dave Faris Yousif, MES
 Advisor, Policy Waste Reduction
 Waste Management Division
 Public Works
 Region of Peel
 10 Peel Centre Drive, Suite A, 4th Floor
 Brampton, Ontario L6T 4B9

Office: 905-791-7800 ext. 7085
 Mobile: 905-452-2968
 Email: dave.yousif@peelregion.ca

*Disclaimer: "The information presented on the maps within this application have been prepared as a reference for consultation purposes only. These maps provide visualization of proposed policy areas and do not represent adopted, approved or in-effect mapping. The in-effect Official Plan schedules and figures, adopting by-law itself and any amending by-laws or Local Planning Appeal Tribunal decisions must be consulted for the official data. Links to all in-effect Official Plan maps are located here: <http://www.peelregion.ca/planning/officialplan/download.htm>
 © Region of Peel"*

We Want to Hear from You!

Share your thoughts in the comment box below. We will publish all approved comments.

Privacy is important to us. You are not required to provide a name and email unless you would like to be notified of a response, and you will be added to our notification list.*

Personal information is being collected pursuant to the requirements of the Planning Act, R.S.O. 1990 to notify participants of future consultation, newsletters, and Regional Official Plan policies. With the exception of personal information, all comments may become part of the public record of the review process to assist in making a decision on this planning matter. Questions regarding this collection may be directed to Regional Planning and Growth Management Division, 10 Peel Centre Drive, Suite A, 6th Floor, Brampton, Ontario, L6T 4B9, or at planpeel@peelregion.ca.

*By agreeing to join our notification list you will receive periodic emails or letters related to the Regional Official Plan Review. You can be taken off this list at any time by emailing planpeel@peelregion.ca with the headline "unsubscribe."

Name

Optional

Email

Optional

Where do you live?*

-Please Select-

What Focus Area does your comment pertain to?*

General

Greenlands

Growth Management

Housing

Major Transit Station Areas

Other: Cultural Heritage & Indigenous Engagement

Other: Waste Management

Transportation

Please provide your comments*

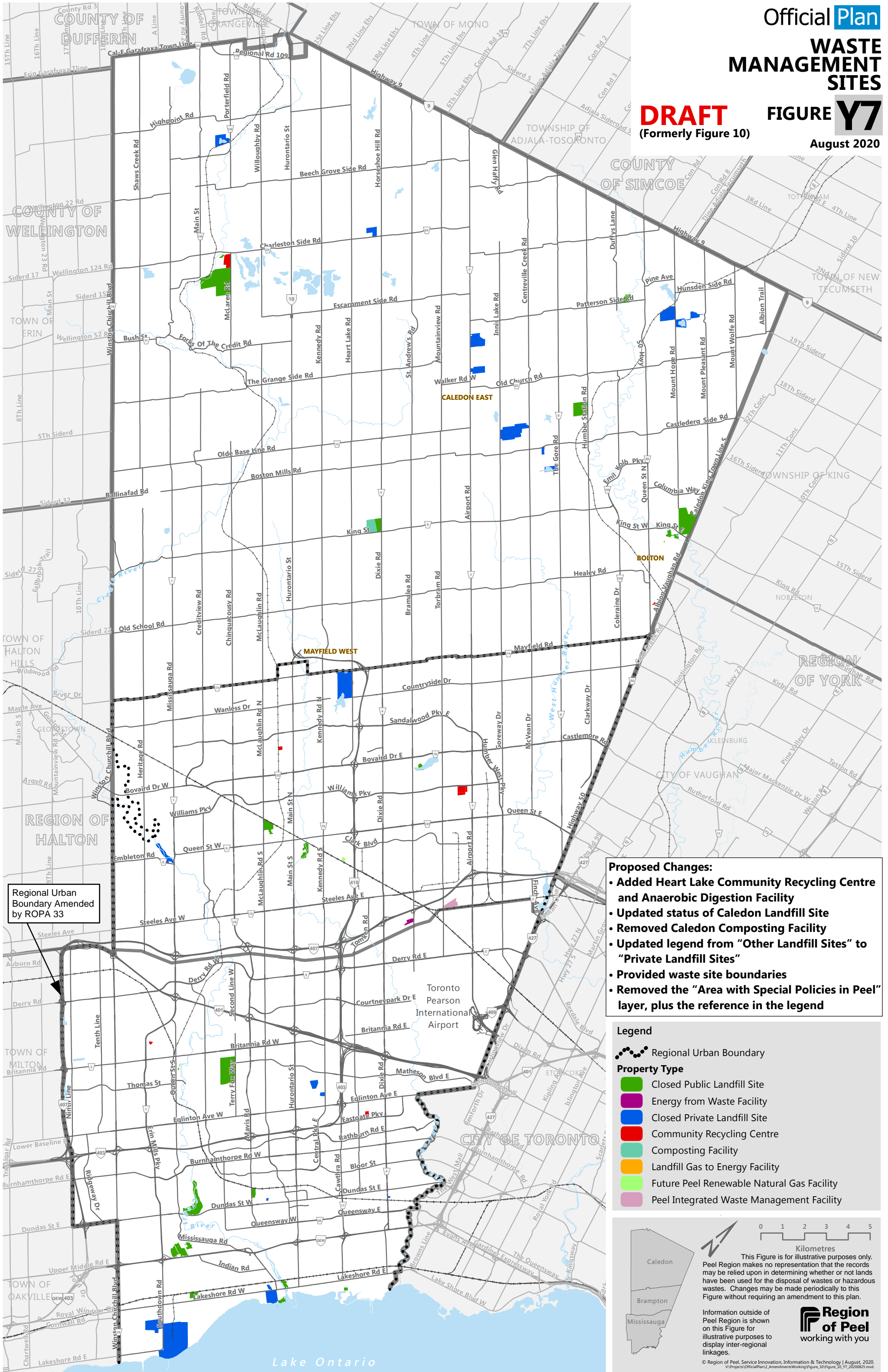
Please do not include any personal identifying information, like names, personal addresses or phone numbers within the comment itself.

PDF Versions of the Schedules/Figures included in this Focus Area

DRAFT (Formerly Figure 10)

FIGURE Y7

August 2020



Regional Urban Boundary Amended by ROPA 33

- Proposed Changes:**
- Added Heart Lake Community Recycling Centre and Anaerobic Digestion Facility
 - Updated status of Caledon Landfill Site
 - Removed Caledon Composting Facility
 - Updated legend from "Other Landfill Sites" to "Private Landfill Sites"
 - Provided waste site boundaries
 - Removed the "Area with Special Policies in Peel" layer, plus the reference in the legend

Legend

- Regional Urban Boundary
- Property Type**
 - Closed Public Landfill Site
 - Energy from Waste Facility
 - Closed Private Landfill Site
 - Community Recycling Centre
 - Composting Facility
 - Landfill Gas to Energy Facility
 - Future Peel Renewable Natural Gas Facility
 - Peel Integrated Waste Management Facility

0 1 2 3 4 5
Kilometres

This Figure is for illustrative purposes only. Peel Region makes no representation that the records may be relied upon in determining whether or not lands have been used for the disposal of wastes or hazardous wastes. Changes may be made periodically to this Figure without requiring an amendment to this plan.

Information outside of Peel Region is shown on this Figure for illustrative purposes to display inter-regional linkages.

Region of Peel
working with you

© Region of Peel, Service Innovation, Information & Technology | August, 2020.
V:\Projects\OfficialPlan2_Amendments\Working\Figure_10\Figure_10_Y7_20200825.mxd