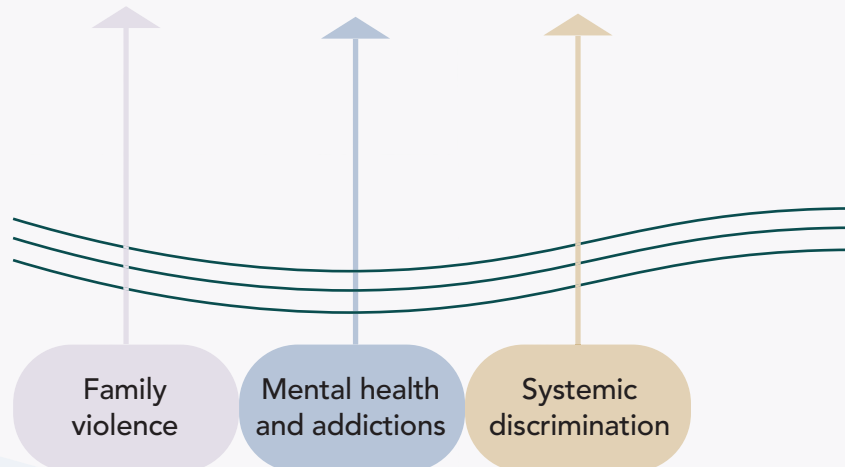
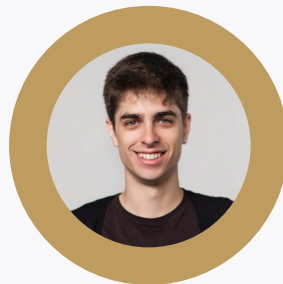


Peel's Community Safety and Well-being Plan

Community Planning and Partnership Agreement



Family violence

Mental health and addictions

Systemic discrimination

Peel's Community Safety and Well-being Plan

Community Planning and Partnership Agreement

"We are committed to working together for a safe, inclusive and connected community for all residents of Peel"

Statement of Promise

We commit to strong collaboration to prioritize, adopt and participate in the Community Safety and Well-being Plan with stakeholders; and to facilitate access to services and supports that advance safety, inclusivity and well-being for all residents of Peel.

Purpose

The purpose of this agreement is to demonstrate a commitment to the Community Safety and Well-being (CSWB) Plan, which harnesses partners' collective and collaborative action to ensure Peel is a safe, inclusive and connected community where all residents thrive.

Community safety and well-being is broad and multi-faceted; it encompasses many areas and intersects with many sectors. Partners of Peel's CSWB Plan are working to address complex social issues facing Peel. These strong collaborative efforts will result in healthy communities that foster well-being and success.

Goals

The Goals of CSWB Partnerships are to:

- I. Contribute to the well-being of Peel's residents through adoption of the CSWB Plan, legislated for municipalities in Ontario under the *Police Services Act, 1990* and to work in partnership with a multi-sectoral advisory committee comprised of representation from: police, municipalities, local service providers in health/mental health, education, community/social services and children/youth services
- II. Commit to aligning organizational goals and outcomes with the CSWB plan
- III. Develop and strengthen cross-sectoral partnerships to accomplish the shared goals, objectives and strategies of the CSWB Plan
- IV. Create and sustain strategic partnerships which involves integration and alignment with applicable/relevant organizational mandates and strategic priorities
- V. Establish joint planning, reporting, and partnership actions in individual multi-year organizational plans
- VI. Ensure strategic and efficient use of partners' resources and time

Approach

Peel's Community Safety and Well-being (CSWB) Plan provides a roadmap for how partners can work collaboratively across different sectors towards a shared commitment for making Peel a safer, and more inclusive and connected community where all residents thrive.

The CSWB Plan will be achieved through *strategic partnerships, applying an equity lens, social determinants of health, collective impact approach and a place-based approach*. Plans to address any issue will follow best practices, using multi-pronged strategies where appropriate, and will utilize the best available evidence to inform decision making.

Partners and Stakeholders agree to:

Signatories agree to collaboration, through the terms outlined below:

Organizational

- 1) Adopt the CSWB plan and work to align organizational goals, resources and outcomes
- 2) Commit to ongoing joint strategic planning, implementation and delivery of action items and reporting to move the partnership agenda forward using the Collective Impact approach
- 3) Accept this stakeholder agreement as part of our ongoing accountability to support and sustain the CSWB Plan's outcomes
- 4) Align with and build on existing collaborative initiatives and system plans that promote safety and well-being in our Peel community
- 5) Support residents' well-being through commitment to excellence

Operational

- 6) Ongoing participation on the CSWB planning tables to support the development and implementation of the Plans strategies/ tactics
- 7) Support collaborative planning and action through a collective impact approach, evaluating mechanisms (e.g., data collection, monitoring, knowledge exchange and sharing) to track progress towards intended goals and outcomes related to CSWB plan, as appropriate
- 8) Identify and respond to emerging trends, priorities and objectives to advance the CSWB Plan as it evolves
- 9) Ensure reasonable timelines and create safe spaces for engagement

Community Collaboration

- 10) Be prepared for the conversations on challenging issues that may be facing our communities
- 11) Take time to build trust, understanding and collective good
- 12) Understand the value of lived experiences
- 13) Co-create community initiatives with residents and community members

Signature

Date