

SERVICE DATA					
SERVICE	DATE	INIT.	SERVICE	DATE	INIT.
REVISIONS					
DATE	DETAILS				INIT.
APRIL 2019	FOR ENVIRONMENTAL ASSESSMENT				J.A.

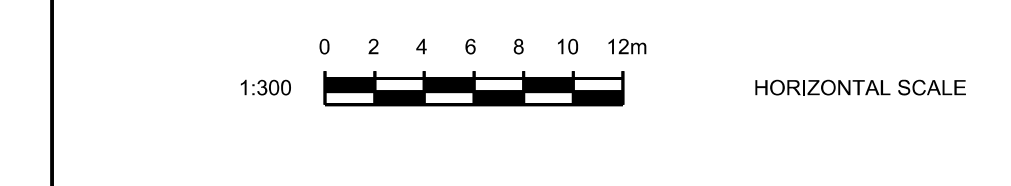
KEY PLAN (N.T.S.)

General Notes
 All Driveways Are ASPHALT Unless Otherwise Noted
 All Water And Sanitary Service Locations Are Approximate And Must Be Located Accurately In The Field
 All Horizontal And Vertical Bends Are In Degrees
 All Pipes Size In mm
 20C Existing Water Service, Size In mm
 WS20 Proposed Water Service, Size In mm
 B.M. No. Elev.
 Description Location
 The Contractor Is Responsible For Locating And Protecting All Existing Utilities Prior To And During Construction. Location Of Existing Utilities Approximate Only. To Be Verified In Field By Contractor.

Designed by _____
 Checked _____
 Approved by _____

NOTICE TO CONTRACTOR
 48 HOURS PRIOR TO COMMENCING WORK NOTIFY THE FOLLOWING

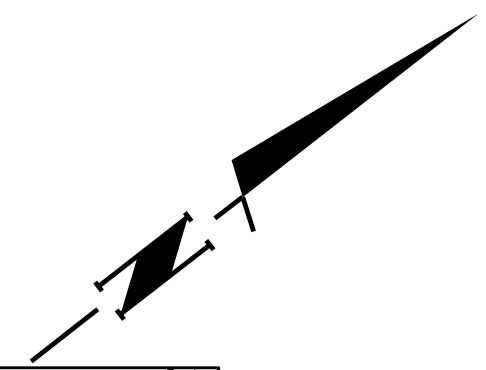
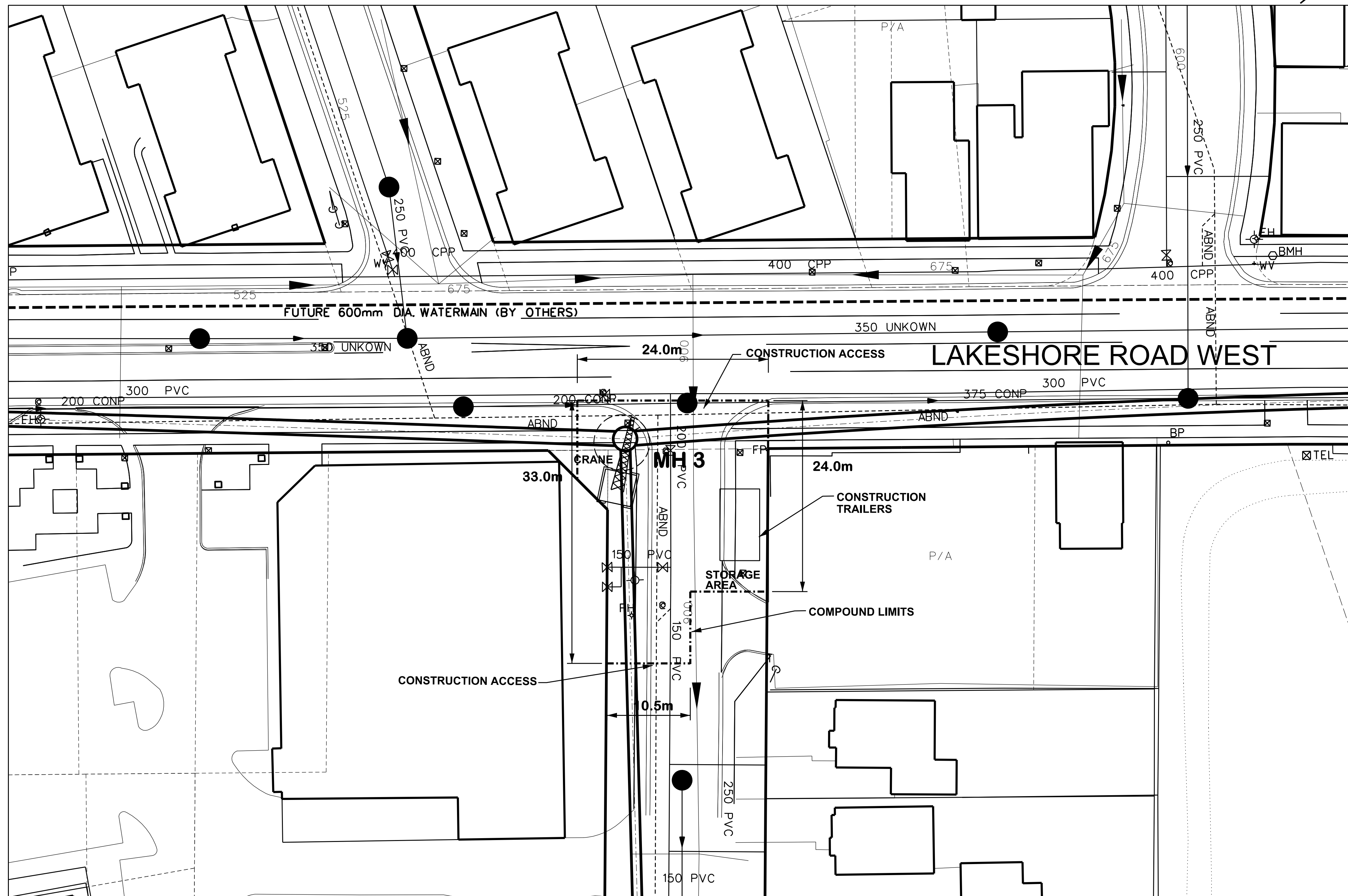
THE REGIONAL MUNICIPALITY OF PEEL	CABLE TELEVISION/FIBROPTIC PROVIDERS:
CITY OF MISSISSAUGA WORKS DEPT.	BELL CANADA
CITY OF BRAMPTON WORKS DEPT.	ENERSOURCE TELECOM
TOWN OF CALEDON WORKS DEPT.	HYDRO ONE TELECOM
BELL CANADA	RODGERS CABLE
ENBRIDGE INCORPORATED-GAS DISTRIBUTION	ALLSTREAM
ONTARIO MINISTRY OF TRANSPORTATION	PSN (PUBLIC SECTOR NETWORK)
ONTARIO CLEAN WATER AGENCY	FUTUREWAY (FCI BROADBAND)
HYDRO ONE NETWORKS	
ENERSOURCE, HYDRO MISSISSAUGA	
HYDRO ONE BRAMPTON	



Region of Peel
 Working for you

LAKESHORE ROAD WEST
 FROM FRONT STREET TO JACK DARLING PARK
PROP. 1800 mm SANITARY TRUNK SEWER
COMPOUND FOR MH1 AND MH2

CAD Area	X-XX	Area	X-XX	Project No.	XX-XXXX
Checked by	J.A.	Drawn by	B.P.	Date	NOVEMBER 2018
Date	NOVEMBER 2018	Sheet	1 of 7	Plan No.	C - 01



SERVICE DATA					
SERVICE	DATE	INIT.	SERVICE	DATE	INIT.
REVISIONS					
DATE	DETAILS				INIT.
APRIL 2019	FOR ENVIRONMENTAL ASSESSMENT				J.A.
KEY PLAN (N.T.S.)					

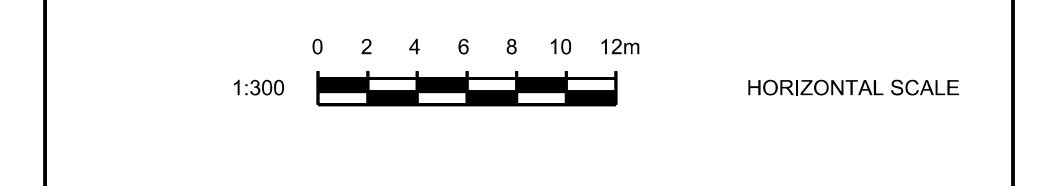
General Notes

All Driveways Are ASPHALT Unless Otherwise Noted
 All Water And Sanitary Service Locations Are Approximate And Must Be Located Accurately In The Field
 All Horizontal And Vertical Bends Are In Degrees
 All Pipes Size In mm
20C Existing Water Service, Size In mm
WS20 Proposed Water Service, Size In mm
 B.M. No. Description Location
 Elev.
 The Contractor Is Responsible For Locating And Protecting All Existing Utilities Prior To And During Construction. Location Of Existing Utilities Approximate Only. To Be Verified In Field By Contractor.

Designed by _____
 Checked by _____
 Approved by _____

NOTICE TO CONTRACTOR
 48 HOURS PRIOR TO COMMENCING WORK NOTIFY THE FOLLOWING

THE REGIONAL MUNICIPALITY OF PEEL	CABLE TELEVISION/FIBROPTIC PROVIDERS:
CITY OF MISSISSAUGA WORKS DEPT.	BELL CANADA
CITY OF BRAMPTON WORKS DEPT.	ENERSOURCE TELECOM
TOWN OF CALEDON WORKS DEPT.	HYDRO ONE TELECOM
BELL CANADA	RODGERS CABLE
ENBRIDGE INCORPORATED-GAS DISTRIBUTION	ALLSTREAM
ONTARIO MINISTRY OF TRANSPORTATION	PSN (PUBLIC SECTOR NETWORK)
ONTARIO CLEAN WATER AGENCY	FUTUREWAY (FCI BROADBAND)
HYDRO ONE NETWORKS	
ENERSOURCE, HYDRO MISSISSAUGA	
HYDRO ONE BRAMPTON	

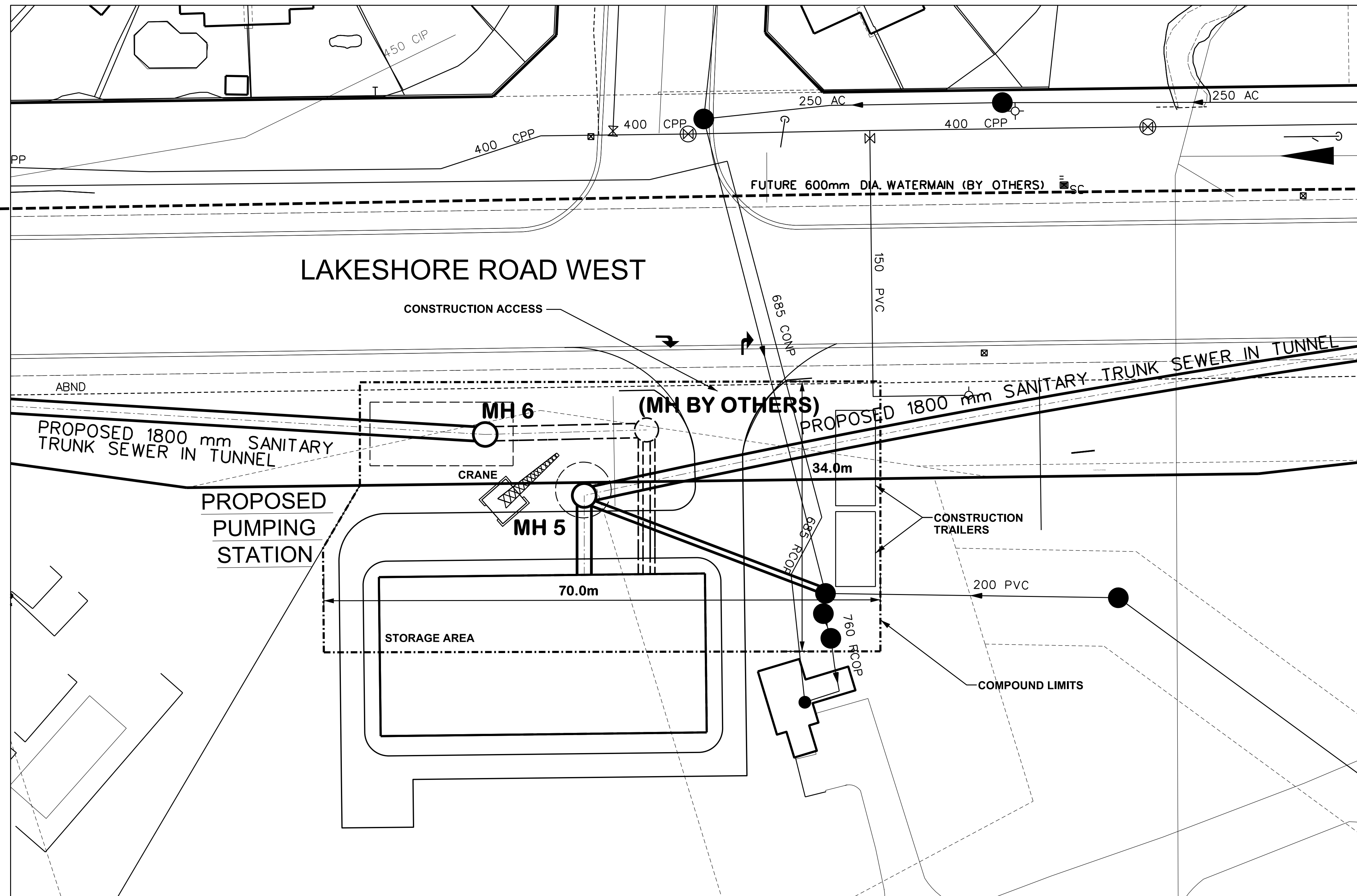


wsp

Region of Peel
 Working for you

LAKESHORE ROAD WEST
 FROM FRONT STREET TO JACK DARLING PARK
PROP. 1800 mm SANITARY TRUNK SEWER
COMPOUND FOR MH3

CAD Area	X-XX	Area	X-XX	Project No.	XX-XXXX
Checked by	J.A.	Drawn by	B.P.		
Date	NOVEMBER 2018	Sheet	2 of 7	Plan No.	C - 02



SERVICE DATA					
SERVICE	DATE	INIT.	SERVICE	DATE	INIT.

REVISIONS		
DATE	DETAILS	INIT.
APRIL 2019	FOR ENVIRONMENTAL ASSESSMENT	J.A.
JUNE 2019	REVISED ALIGNMENT FOR MH 5	J.A.

KEY PLAN (N.T.S.)

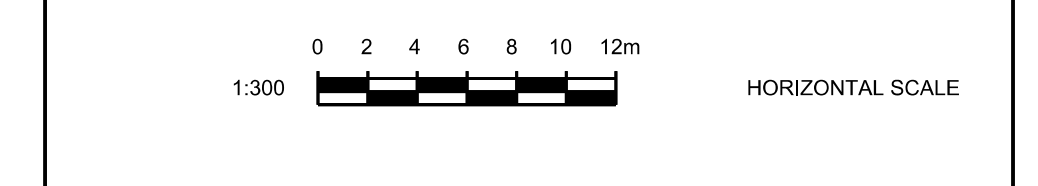
General Notes

All Driveways Are ASPHALT Unless Otherwise Noted
 All Water And Sanitary Service Locations Are Approximate And Must Be Located Accurately In The Field
 All Horizontal And Vertical Bends Are In Degrees
 All Pipes Size In mm
 20C Existing Water Service, Size In mm
 WS20 Proposed Water Service, Size In mm
 B.M. No. Description Location
 Elev.
 The Contractor Is Responsible For Locating And Protecting All Existing Utilities Prior To And During Construction. Location Of Existing Utilities Approximate Only. To Be Verified In Field By Contractor.

Designed by _____
 Checked by _____
 Approved by _____

NOTICE TO CONTRACTOR
 48 HOURS PRIOR TO COMMENCING WORK NOTIFY THE FOLLOWING

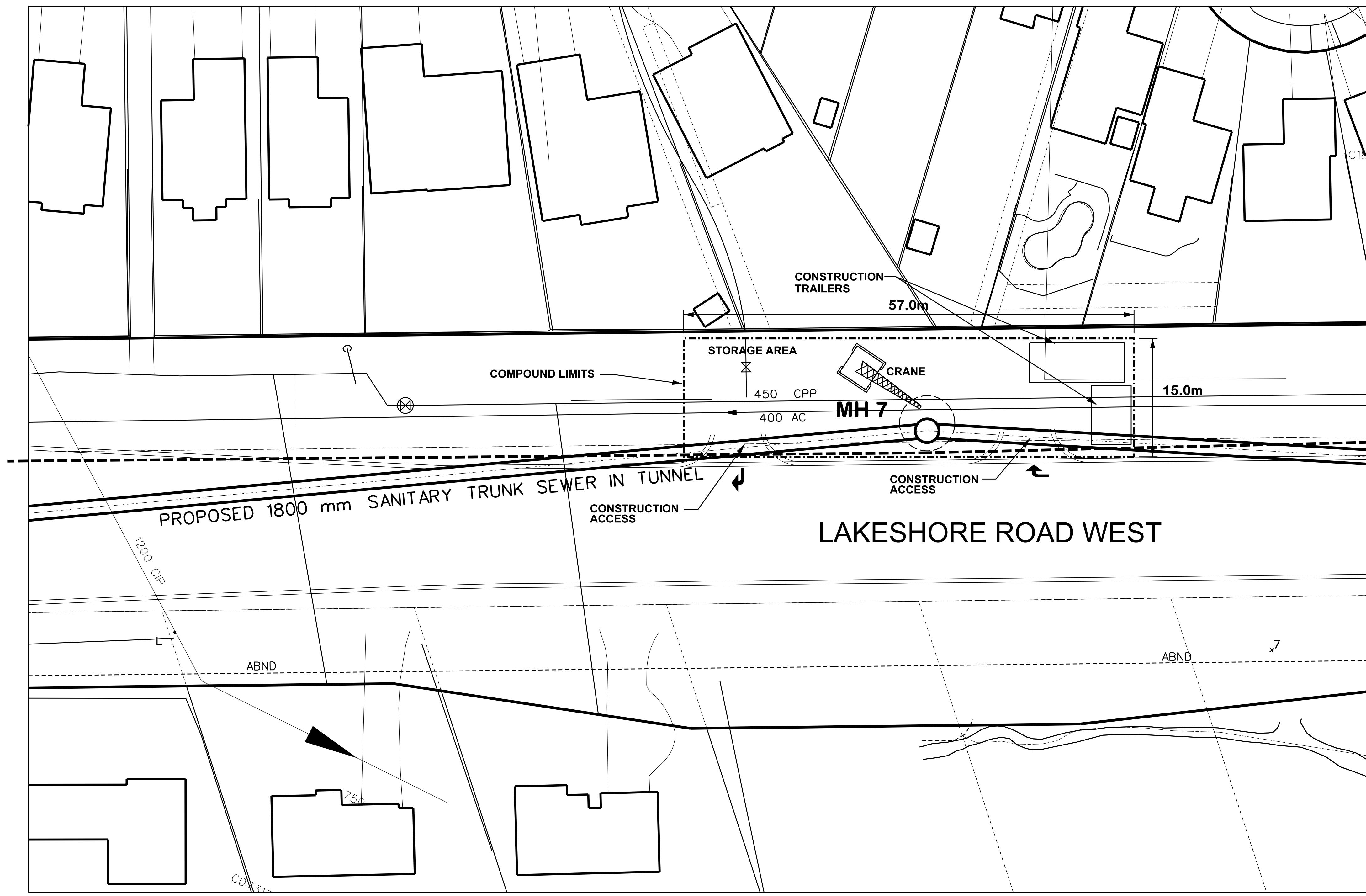
THE REGIONAL MUNICIPALITY OF PEEL	CABLE TELEVISION/FIBROPTIC PROVIDERS:
CITY OF MISSISSAUGA WORKS DEPT.	BELL CANADA
CITY OF BRAMPTON WORKS DEPT.	ENERSOURCE TELECOM
TOWN OF CALEDON WORKS DEPT.	HYDRO ONE TELECOM
BELL CANADA	RODGERS CABLE
ENBRIDGE INCORPORATED-GAS DISTRIBUTION	ALLSTREAM
ONTARIO MINISTRY OF TRANSPORTATION	PSN (PUBLIC SECTOR NETWORK)
ONTARIO CLEAN WATER AGENCY	FUTUREWAY (FCI BROADBAND)
HYDRO ONE NETWORKS	
ENERSOURCE, HYDRO MISSISSAUGA	
HYDRO ONE BRAMPTON	



Region of Peel
 Working for you

LAKESHORE ROAD WEST
 FROM FRONT STREET TO JACK DARLING PARK
PROP. 1800 mm SANITARY TRUNK SEWER
COMPOUND MH 5 AND MH 6

CAD Area	X-XX	Area	X-XX	Project No.	XX-XXXX
Checked by	J.A.	Drawn by	B.P.	Sheet	3 of 7
Date	NOVEMBER 2018	Plan No.	C - 03		

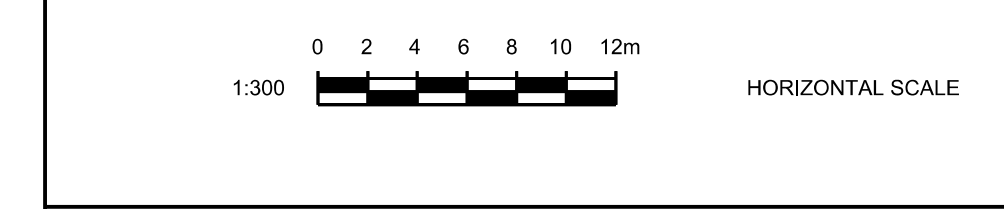


SERVICE DATA					
SERVICE	DATE	INIT.	SERVICE	DATE	INIT.
REVISIONS					
DATE	DETAILS				INIT.
APRIL 2019	FOR ENVIRONMENTAL ASSESSMENT				J.A.
KEY PLAN (N.T.S.)					

General Notes
 All Driveways Are ASPHALT Unless Otherwise Noted
 All Water And Sanitary Service Locations Are Approximate And Must Be Located Accurately In The Field
 All Horizontal And Vertical Bends Are In Degrees
 All Pipes Size In mm
20C Existing Water Service, Size In mm
WS20 Proposed Water Service, Size In mm
 B.M. No. Description Location
 Elev.
 The Contractor Is Responsible For Locating And Protecting All Existing Utilities Prior To And During Construction. Location Of Existing Utilities Approximate Only. To Be Verified In Field By Contractor.

Designed by _____ Chkd _____
 Approved by _____

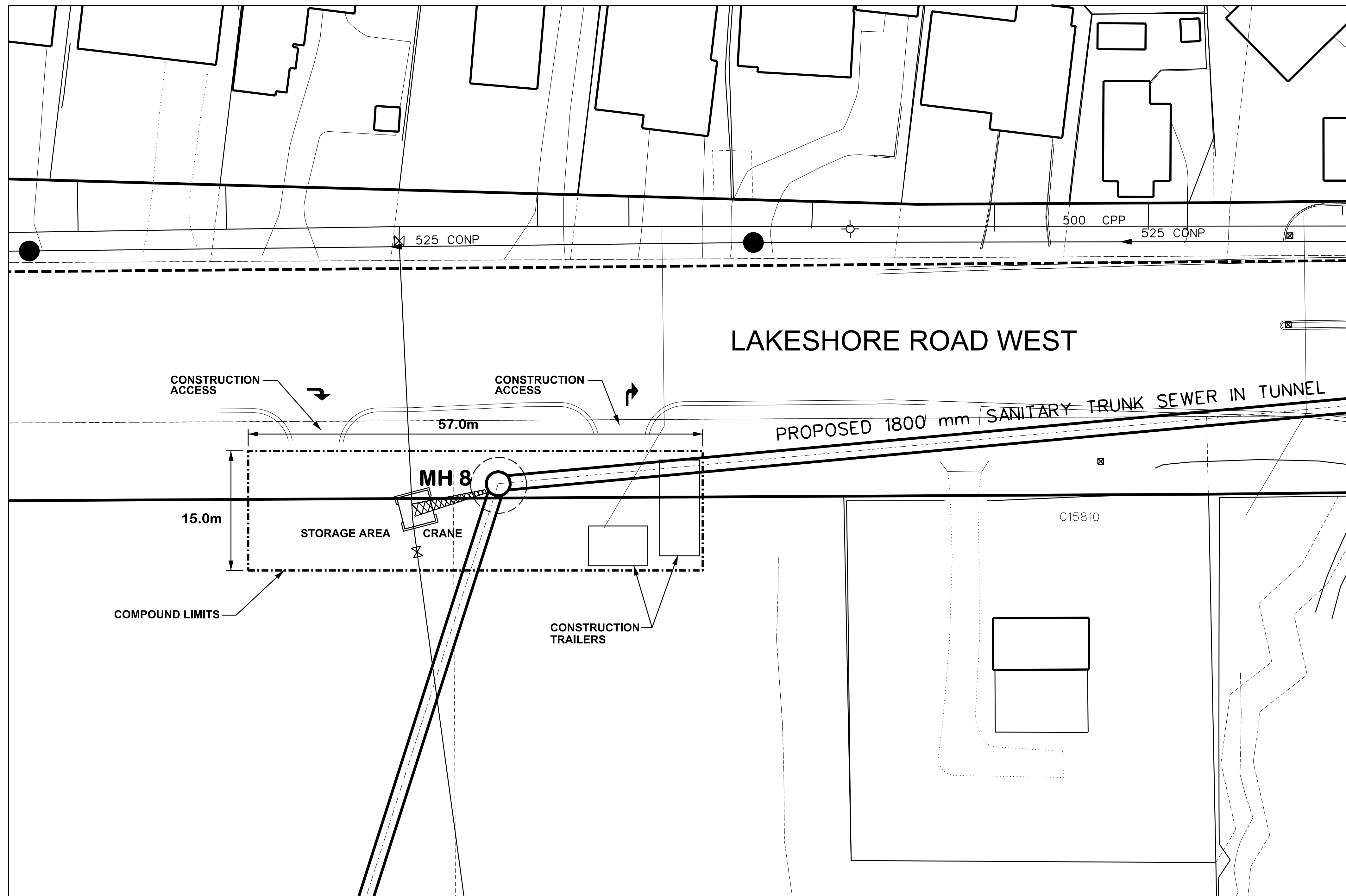
NOTICE TO CONTRACTOR
 48 HOURS PRIOR TO COMMENCING WORK NOTIFY THE FOLLOWING
 THE REGIONAL MUNICIPALITY OF PEEI
 CITY OF MISSISSAUGA WORKS DEPT.
 CITY OF BRAMPTON WORKS DEPT.
 TOWN OF CALEDON WORKS DEPT.
 BELL CANADA
 ENBRIDGE INCORPORATED-GAS DISTRIBUTION
 ONTARIO MINISTRY OF TRANSPORTATION
 ONTARIO CLEAN WATER AGENCY
 HYDRO ONE NETWORKS
 ENERSOURCE, HYDRO MISSISSAUGA
 HYDRO ONE BRAMPTON
 CABLE TELEVISION/FIBROPTIC PROVIDERS:
 BELL CANADA
 ENERSOURCE TELECOM
 HYDRO ONE TELECOM
 ROGERS CABLE
 ALLSTREAM
 PSN (PUBLIC SECTOR NETWORK)
 FUTUREWAY (FCI BROADBAND)



Region of Peel
 Working for you

LAKESHORE ROAD WEST
 FROM FRONT STREET TO JACK DARLING PARK
PROP. 1800 mm SANITARY TRUNK SEWER
COMPOUND MH 7

CAD Area	X-XX	Area	X-XX	Project No.	XX-XXXX
Checked by	J.A.	Drawn by	B.P.	Date	NOVEMBER 2018
Date	NOVEMBER 2018	Sheet	4 of 7	Plan No.	C - 04



SERVICE DATA					
SERVICE	DATE	INIT.	SERVICE	DATE	INIT.
REVISIONS					
DATE	DETAILS				INIT.
APRIL 2019	FOR ENVIRONMENTAL ASSESSMENT				J.A.
KEY PLAN (N.T.S.)					

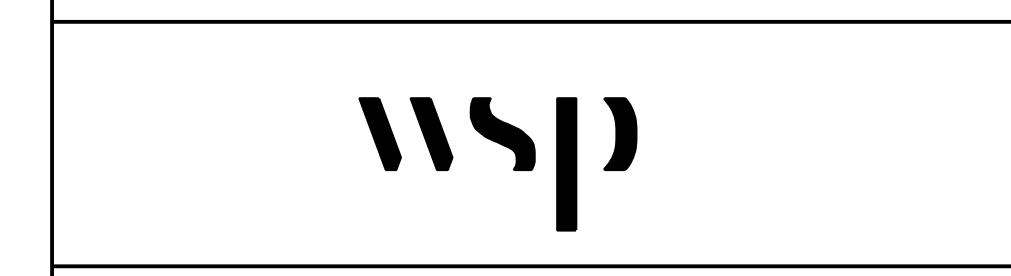
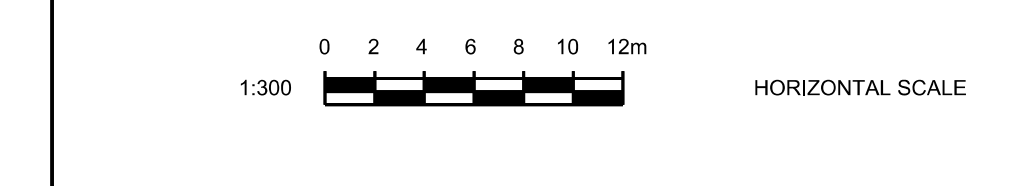
General Notes

All Driveways Are ASPHALT Unless Otherwise Noted
 All Water And Sanitary Service Locations Are Approximate And Must Be Located Accurately In The Field
 All Horizontal And Vertical Bends Are In Degrees
 All Pipes Size In mm
 20C Existing Water Service, Size In mm
 WS20 Proposed Water Service, Size In mm
 B.M. No. Description Location
 Elev.
 The Contractor Is Responsible For Locating And Protecting All Existing Utilities Prior To And During Construction. Location Of Existing Utilities Approximate Only. To Be Verified In Field By Contractor.

Designed by _____
 Checked by _____
 Approved by _____

NOTICE TO CONTRACTOR
 48 HOURS PRIOR TO COMMENCING WORK NOTIFY THE FOLLOWING

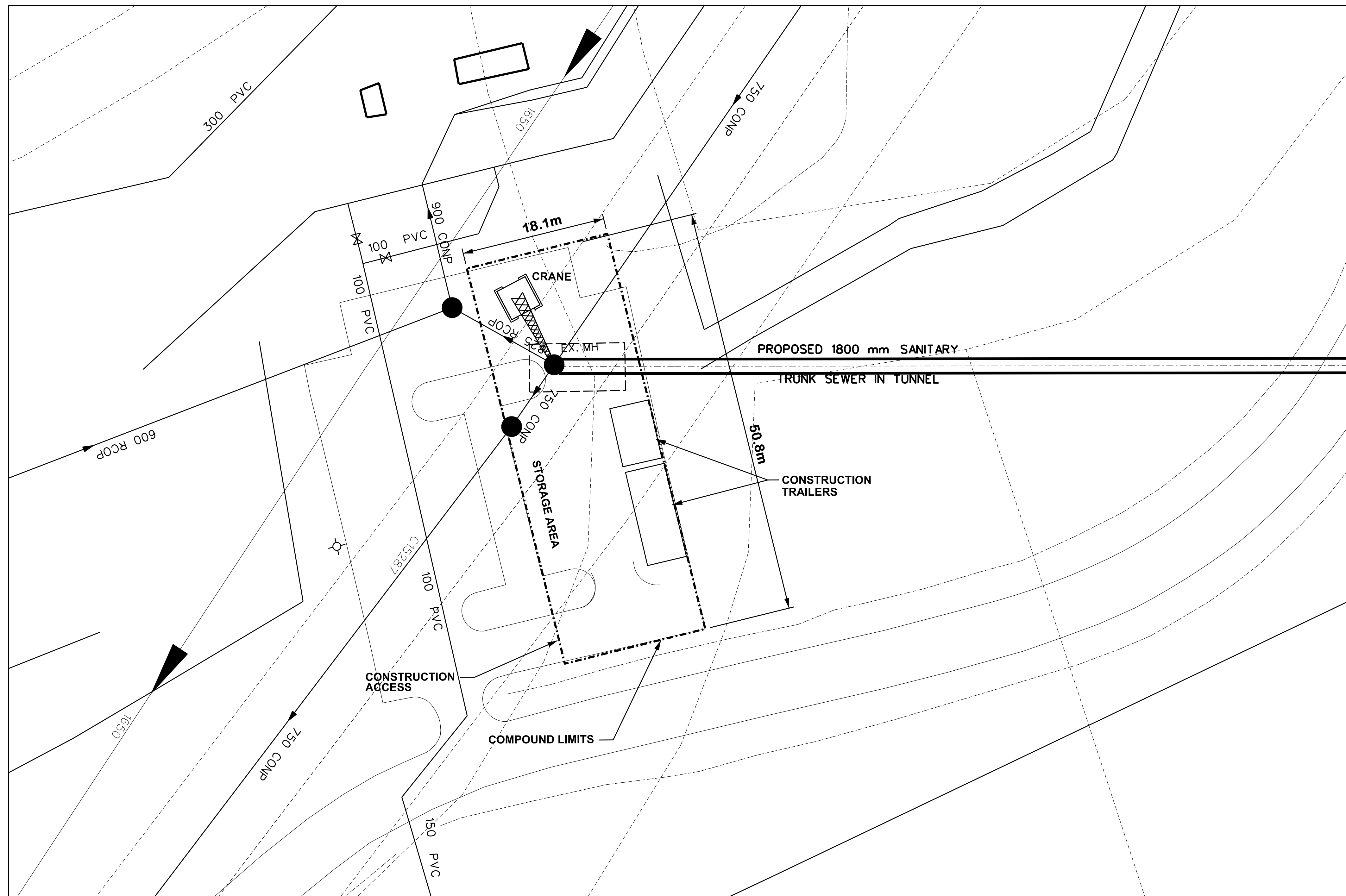
THE REGIONAL MUNICIPALITY OF PEEL	CABLE TELEVISION/FIBROPTIC PROVIDERS:
CITY OF MISSISSAUGA WORKS DEPT.	BELL CANADA
CITY OF BRAMPTON WORKS DEPT.	ENERSOURCE TELECOM
TOWN OF CALEDON WORKS DEPT.	HYDRO ONE TELECOM
BELL CANADA	RODGERS CABLE
ENBRIDGE INCORPORATED-GAS DISTRIBUTION	ALLSTREAM
ONTARIO MINISTRY OF TRANSPORTATION	PSN (PUBLIC SECTOR NETWORK)
ONTARIO CLEAN WATER AGENCY	FUTUREWAY (FCI BROADBAND)
HYDRO ONE NETWORKS	
ENERSOURCE, HYDRO MISSISSAUGA	
HYDRO ONE BRAMPTON	



Region of Peel
 Working for you

LAKESHORE ROAD WEST
 FROM FRONT STREET TO JACK DARLING PARK
PROP. 1800 mm SANITARY TRUNK SEWER
COMPOUND MH 8

CAD Area	X-XX	Area	X-XX	Project No.	XX-XXXX
Checked by	J.A.	Drawn by	B.P.		
Date	NOVEMBER 2018	Sheet	5 of 7	Plan No.	C - 05



SERVICE DATA					
SERVICE	DATE	INIT.	SERVICE	DATE	INIT.
REVISIONS					
DATE	DETAILS				INIT.
APRIL 2019	FOR ENVIRONMENTAL ASSESSMENT				J.A.

KEY PLAN (N.T.S.)

General Notes
 All Driveways Are ASPHALT Unless Otherwise Noted
 All Water And Sanitary Service Locations Are Approximate And Must Be Located Accurately In The Field
 All Horizontal And Vertical Bends Are In Degrees
 All Pipes Size In mm
 20C Existing Water Service, Size In mm
 WS20 Proposed Water Service, Size In mm
 B.M. No. Description Location
 The Contractor Is Responsible For Locating And Protecting All Existing Utilities Prior To And During Construction. Location Of Existing Utilities Approximate Only. To Be Verified In Field By Contractor.

Designed by _____
 Checked by _____
 Approved by _____

NOTICE TO CONTRACTOR
 48 HOURS PRIOR TO COMMENCING WORK NOTIFY THE FOLLOWING

THE REGIONAL MUNICIPALITY OF PEEL	CABLE TELEVISION/FIBROPTIC PROVIDERS:
CITY OF MISSISSAUGA WORKS DEPT.	BELL CANADA
CITY OF BRAMPTON WORKS DEPT.	ENERSOURCE TELECOM
TOWN OF CALEDON WORKS DEPT.	HYDRO ONE TELECOM
BELL CANADA	RODGERS CABLE
ENBRIDGE INCORPORATED-GAS DISTRIBUTION	ALLSTREAM
ONTARIO MINISTRY OF TRANSPORTATION	PSN (PUBLIC SECTOR NETWORK)
ONTARIO CLEAN WATER AGENCY	FUTUREWAY (FCI BROADBAND)
HYDRO ONE NETWORKS	
ENERSOURCE, HYDRO MISSISSAUGA	
HYDRO ONE BRAMPTON	

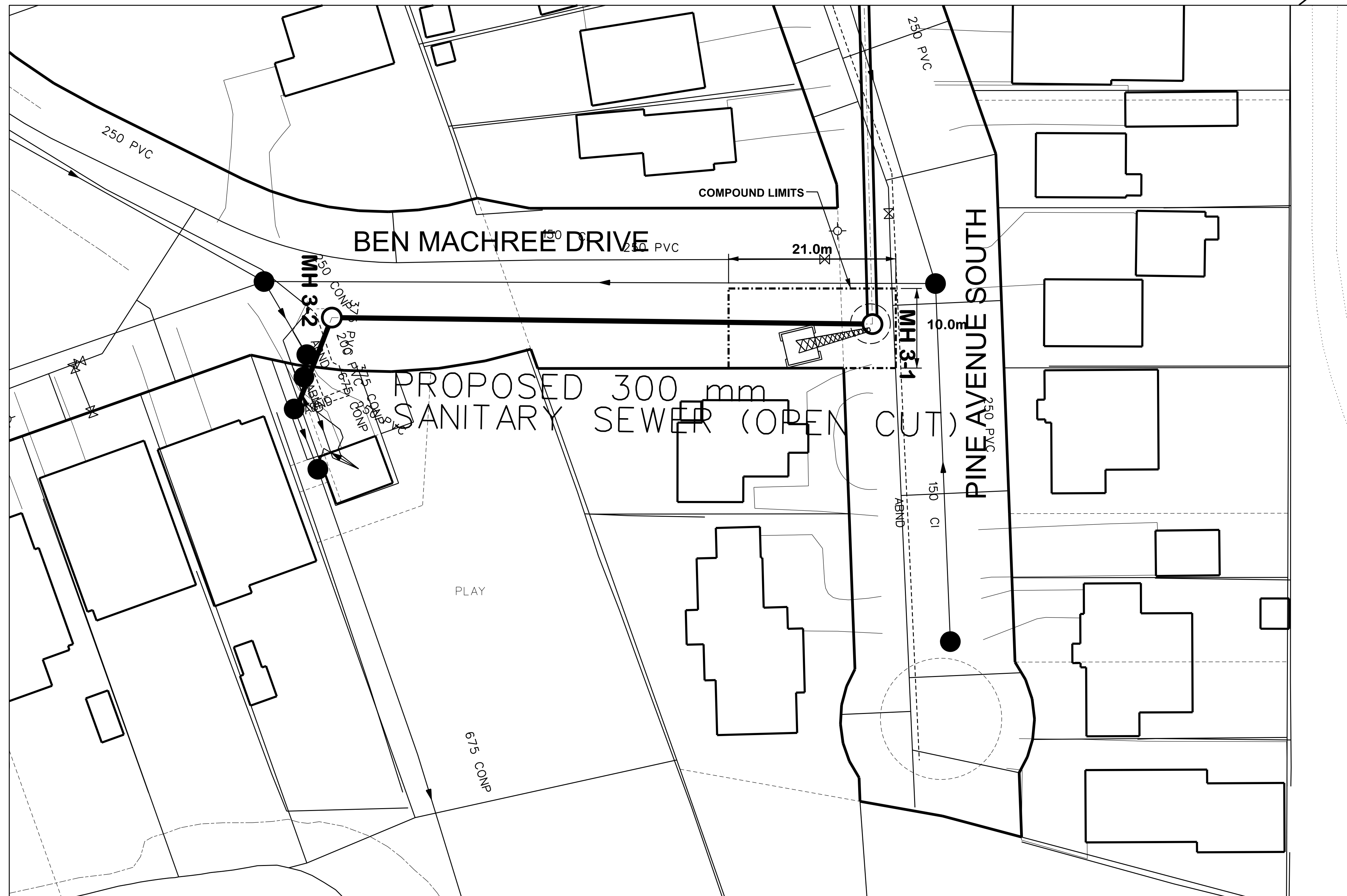
0 2 4 6 8 10 12m
 1:300 HORIZONTAL SCALE

wsp

Region of Peel
Working for you

LAKESHORE ROAD WEST
 FROM FRONT STREET TO JACK DARLING PARK
PROP. 1800 mm SANITARY TRUNK SEWER
COMPOUND Ex. MH

CAD Area	X-XX	Area	X-XX	Project No.	XX-XXXX
Checked by	J.A.	Drawn by	B.P.	Date	NOVEMBER 2018
Date	NOVEMBER 2018	Sheet	6 of 7	Plan No.	C - 06



SERVICE DATA					
SERVICE	DATE	INIT.	SERVICE	DATE	INIT.
REVISIONS					
DATE	DETAILS				INIT.
APRIL 2019	FOR ENVIRONMENTAL ASSESSMENT				J.A.

KEY PLAN (N.T.S.)

General Notes

All Driveways Are ASPHALT Unless Otherwise Noted
 All Water And Sanitary Service Locations Are Approximate
 And Must Be Located Accurately In The Field
 All Horizontal And Vertical Bends Are In Degrees
 All Pipes Size In mm
 20C Existing Water Service, Size In mm
 WS20 Proposed Water Service, Size In mm
 Elev.
 B.M. No.
 Description
 Location
 The Contractor Is Responsible For Locating And Protecting All
 Existing Utilities Prior To And During Construction. Location Of
 Existing Utilities Approximate Only. To Be Verified In Field By Contractor.

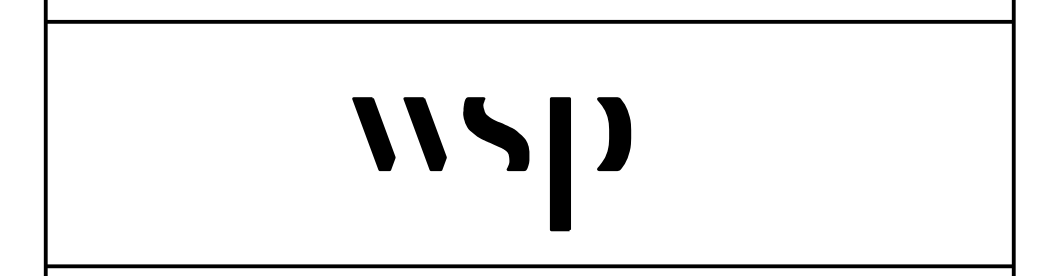
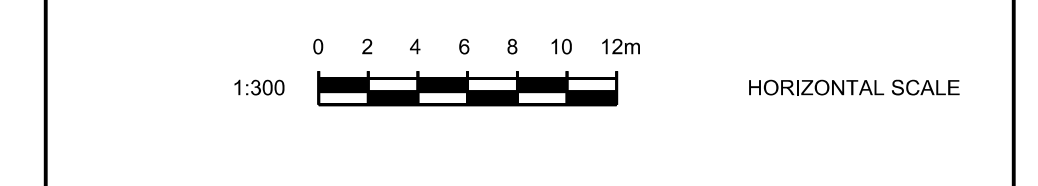
Designed by _____
 Chkd. _____

Approved by _____

NOTICE TO CONTRACTOR
 48 HOURS PRIOR TO COMMENCING WORK NOTIFY THE FOLLOWING

THE REGIONAL MUNICIPALITY OF PEEL
 CITY OF MISSISSAUGA WORKS DEPT.
 CITY OF BRAMPTON WORKS DEPT.
 TOWN OF CALEDON WORKS DEPT.
 BELL CANADA
 ENBRIDGE INCORPORATED-GAS DISTRIBUTION
 ONTARIO MINISTRY OF TRANSPORTATION
 ONTARIO CLEAN WATER AGENCY
 HYDRO ONE NETWORKS
 ENERSOURCE, HYDRO MISSISSAUGA
 HYDRO ONE BRAMPTON

CABLE TELEVISION/FIBROPTIC PROVIDERS:
 BELL CANADA
 ENERSOURCE TELECOM
 HYDRO ONE TELECOM
 ROGERS CABLE
 ALLSTREAM
 PSN (PUBLIC SECTOR NETWORK)
 FUTUREWAY (FCI BROADBAND)



Region of Peel
 Working for you

LAKESHORE ROAD WEST
 FROM FRONT STREET TO JACK DARLING PARK
PROP. 1800 mm SANITARY TRUNK SEWER
 COMPOUND FOR MH 3-1

CAD Area	X-XX	Area	X-XX	Project No.	XX-XXXX
Checked by	J.A.	Drawn by	B.P.	Date	NOVEMBER 2018
Date	NOVEMBER 2018	Sheet	7 of 7	Plan No.	C - 07